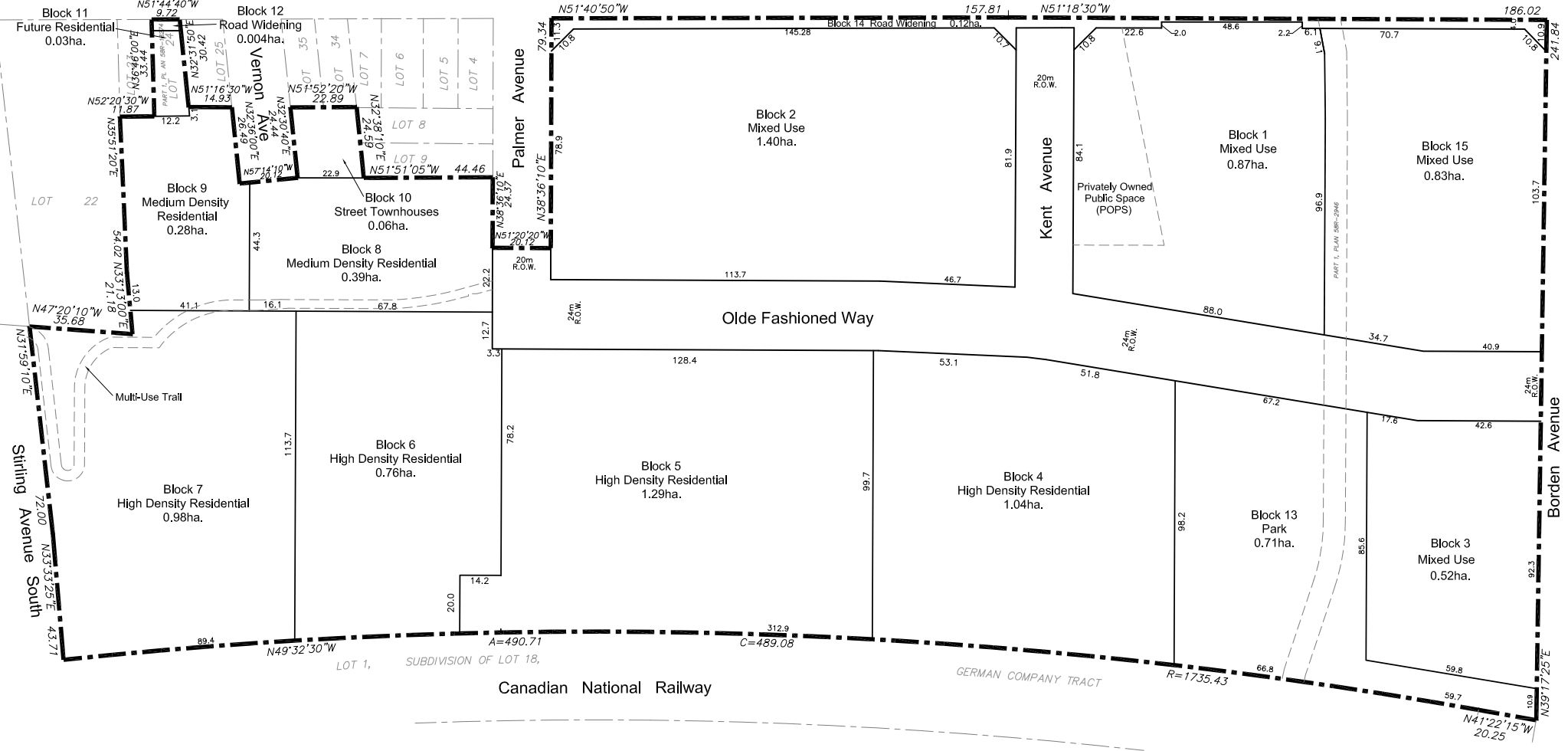


**Land Use Schedule**

BLOCKS	LAND USE	UNITS	AREA (ha.)
Block 1	Mixed Use	0	0.87
Block 2	Mixed Use	528	1.40
Block 3	Mixed Use	159	0.52
Block 4	High Density Residential	553	1.04
Block 5	High Density Residential	981	1.29
Block 6	High Density Residential	332	0.76
Block 7	High Density Residential	574	0.98
Block 8	Medium Density Residential	107	0.39
Block 9	Medium Density Residential	108	0.28
Block 10	Street Townhouses	3	0.06
Block 11	Future Residential		0.03
Block 13	Park		0.71
Block 12, 14	Road Widening		0.12
Block 15	Mixed Use		0.83
	Roads		1.08
<b>TOTAL</b>		<b>3,345</b>	<b>10.36</b>



# PLAN OF SUBDIVISION

321 COURTLAND AVE. DEVELOPMENTS INC.

Part of Prince Arthur Avenue (closed by By-Law 94-47, inst. 1214209), and All of Lots 1-3, 10-21, and 22-35, RP263 and Part of Lot 5, RP366 and Part of Lots 22 and 26 and All of Lots 24 and 27-33, Compiled Plan of Subdivision of Lot 18 GCT and Lot 193, Streets and Lanes and Part of Lots 8,9,10,19 and 20 and All of Lots 14-17, RP404 and Lot 4, Streets and Lanes and Part of Lots 393-400, RP262 and Part of Lot 7, Streets and Lanes

REVISD:

SCALE 1: 2,000

DATE: MAY 12, 2023

SUBDIVISION APPLICATION 30T-19201

ZONE CHANGE APPLICATION ZC19/005/C/GS

OFFICIAL PLAN AMENDMENT OP19/002/C/GS

**City of Kitchener**

DEVELOPMENT SERVICES DEPARTMENT, PLANNING

CAD FILE:  
30T-19201-DA.dwg