

# MEADOW CREEK

Where Your Dreams Are Our Responsibilities



**Meadow Creek**  
YOUR DREAMS ARE OUR RESPONSIBILITY



# Meet the Team



Diya



Shaalini



Amanat



Ava



Fatiha



Adam



Mehakpreet



Zara

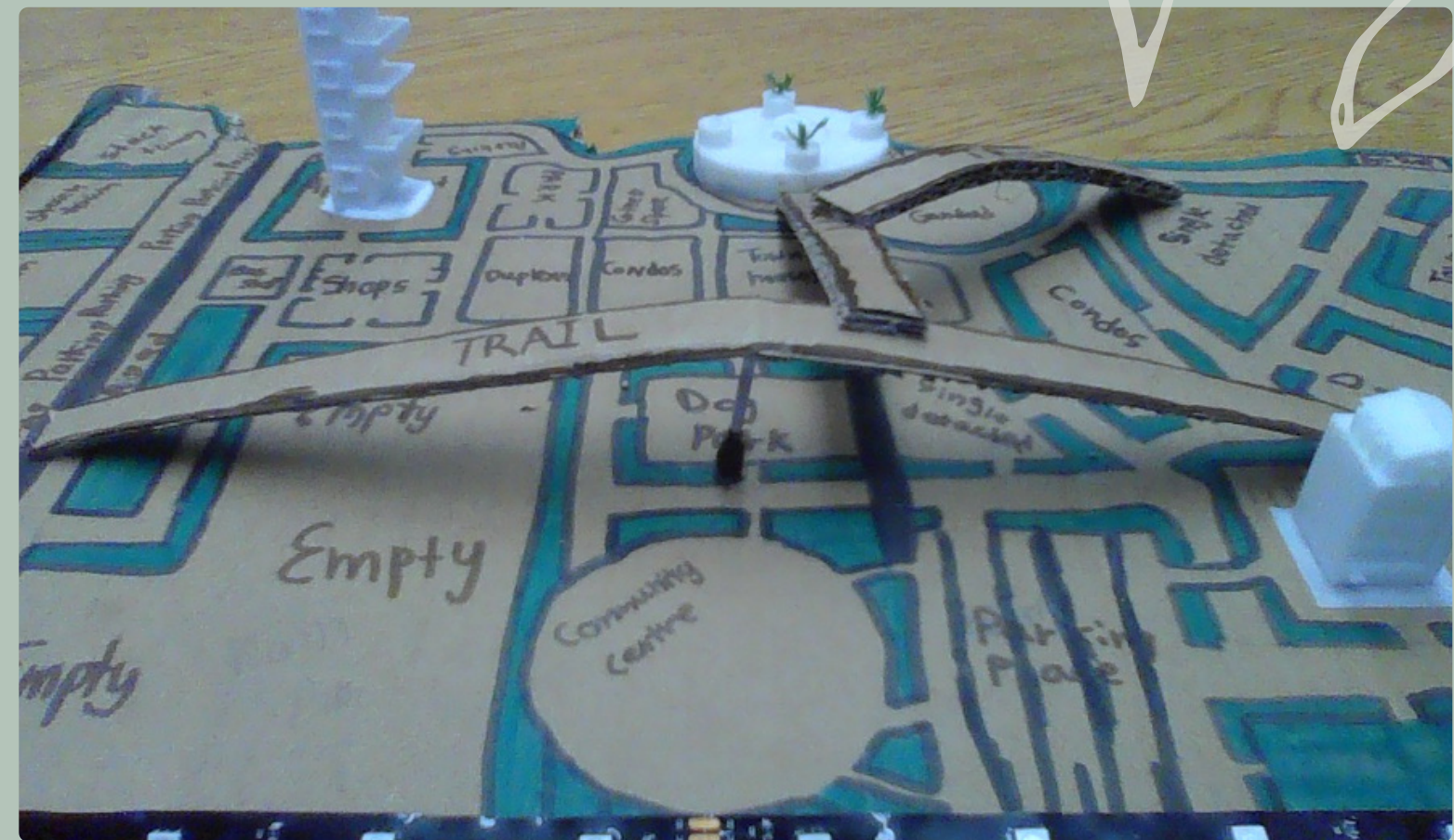


Mate



# WALKABILITY

Walkability is an important feature that many communities don't have. Our community addresses this issue and uses airborne bridges to encourage walkability.

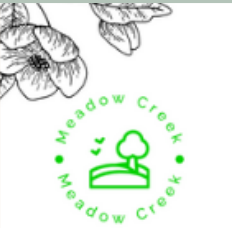


## MAP



# WHY DO WE INCLUDE WALKABILITY FEATURES?

- Increase In Physical Activity
- Reduces Greenhouse Gas Emissions
- Improves Mental Health
- Stronger Economies/Increases Property Values



Meadow Creek  
YOUR DREAMS ARE OUR RESPONSIBILITY

Different and creative designs that come in your dreams will come true soon. Innovative and eco-friendly buildings that give you joy in your beautiful hearts. Come in Meadow Creek and fill your dreams with happiness and pleasant moments.

You will have enough amount of air because we have 40% of Green Space. Green Space is the most important thing in the community. Usually in other community there are many buildings but not too many plants but here you will find the buildings have green space on them so we have buildings and green space balanced.

YOUR DREAMS ARE OUR RESPONSIBILITY

Meadow Creek is the community of comfort and happiness. Here no need to get annoyed of driving because the walkability is excellent. Walkability is essential for life and making you tired, joyful and refreshing is the walk we all need in our life.



# What's Special About Our Housing?

Houses in our community include innovative features like rooftop gardens, patios, and many more unique features. Take a close look at our unique town houses, apartments, and condos. Filled with eco-friendly activities and designs for everyone to enjoy.

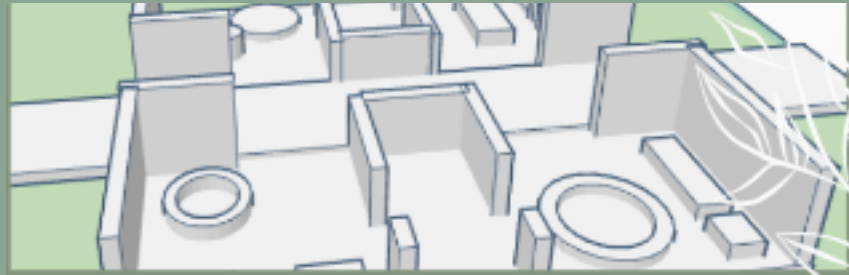


Stacked Town House



# Designs In Our Community

## Park



### Meadow Creek Parks

Parks are spread throughout Meadow Creek. A beautiful place to spend your time. Made with Eco-friendly materials and provides beautiful greenery and amazing sitting places. A place to enjoy your time when you are free.

#### FACTS ABOUT THE PARK:

The reason why we use Eco-friendly materials, including trash cans, and more, is because it reduces the amount of waste that ends up on landfills. It also reduces the amount of carbon footprints which usually causes a lot of environmental damage.

#### FEATURES:

- ✔ Seating Areas
- ✔ Pools and Splash pads
- ✔ Beautiful Greenery

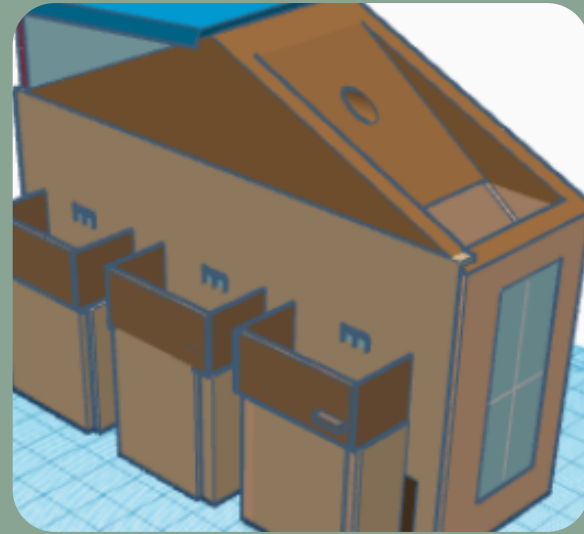
Wood and Other Eco-Friendly Materials!

Going outside boosts your strength and even helps you become social. You receive vitamins just by going outside. Can you believe it? Well I can.

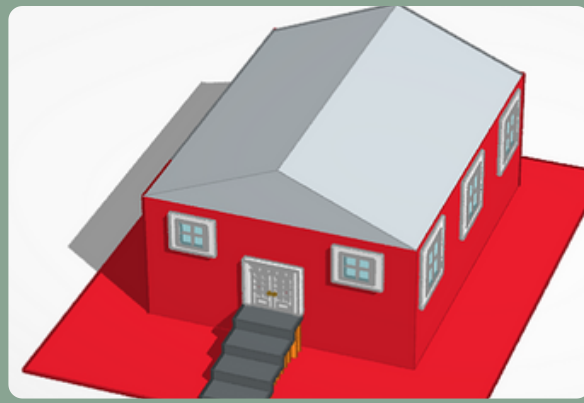
Did you know, spending time outside can help increase your focus, your immunity levels, and also exercise your body? This is why going outdoors is important.

Let's More Features You Don't Want to Miss!

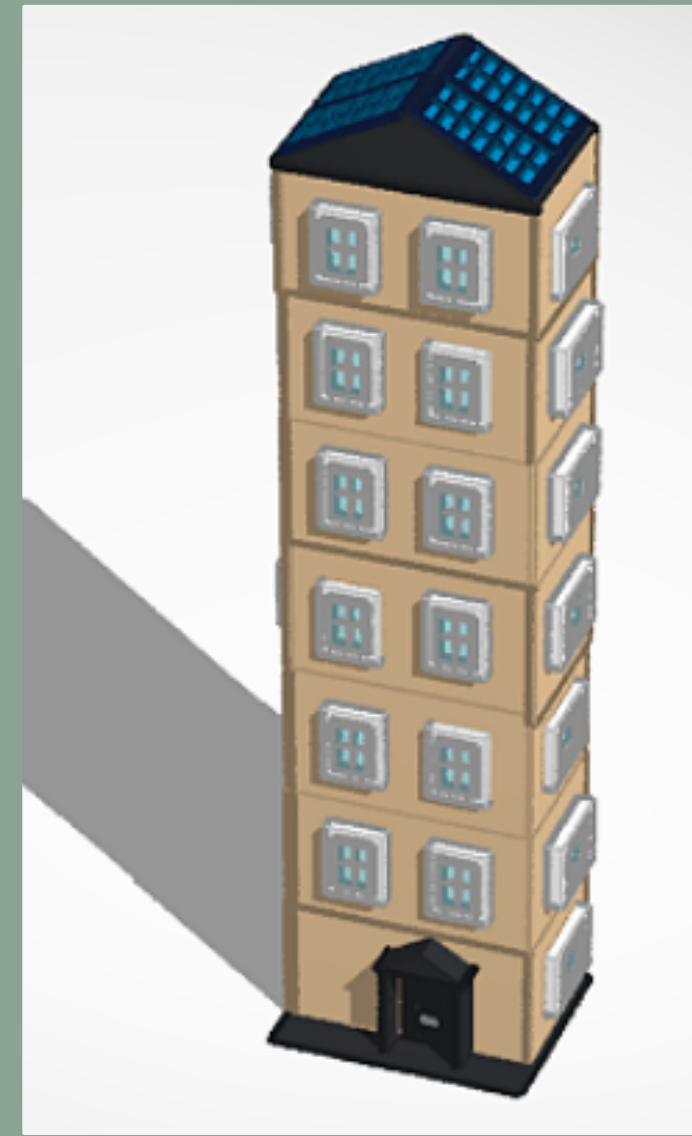
## Town House



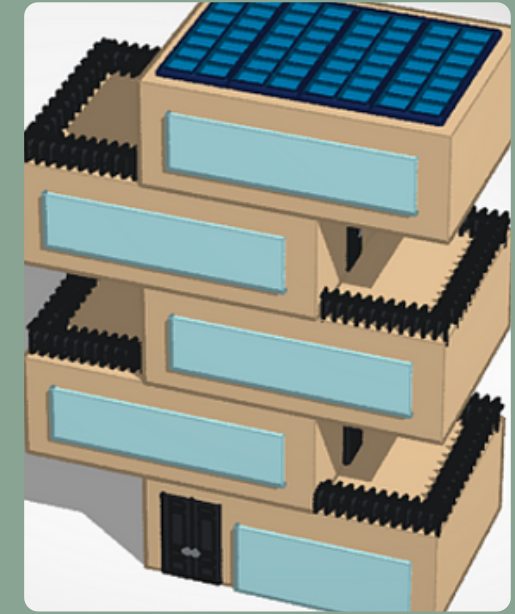
## Single Detached



## Apartment



## Condos



# Community Center

Our community center can help you express your culture and creativity. It is one of the many unique features that we have. Here are some of the benefits of our community center.

- Socializing with your peers
- Get fitness
- Strengthen bonds with friends and family



**Thank You For Your  
Time!**







# New Jefferson

The best Of Both Worlds

**Made by: George, Krish, Ameen, Noah, Jack, Hayden, Charlotte, and Simreet**

# New Jefferson

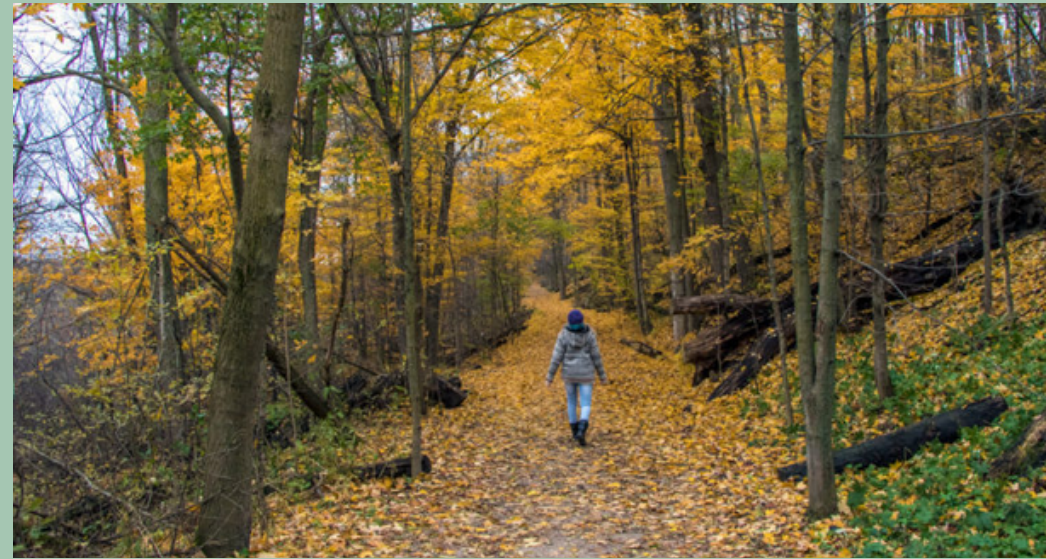
Welcome to New Jefferson a place full of community, diversity, and nature. A place where you can come to shop, play, work and live in modern homes that you can afford. Take a walk on one of New Jefferson's trails with a beautiful view of the rich trees to your left and blair creek to your right. Imagine, going to Jefferson Plaza to get a new outfit, or stopping by the park with your kids. New Jefferson has everything you need in just one block. We can't wait to see you taking a look at your next home in New Jefferson.



# Highlights



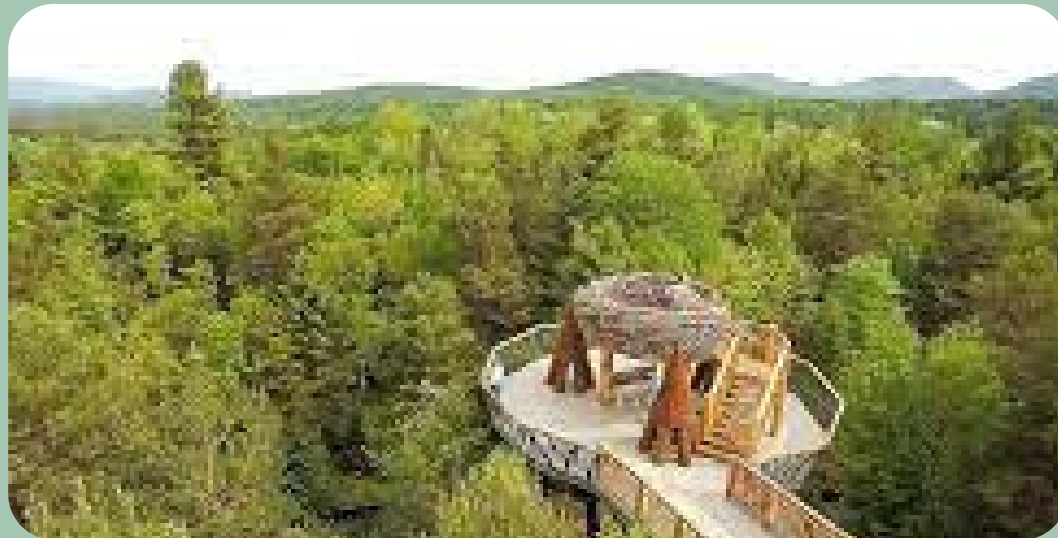
Greenhouse



Trails



Fountain



Sky Park



Jefferson Plaza



Koi Pond



# Garden Pond

What is a garden pond / aquatic garden?

- The pond is an principal element within the garden.
- Primary focus is on plants, but will also hold things like fish and other wildlife.
- it is roughly 150 square feet ( the deepest part being 2 feet).

# GREENHOUSE



"TO BRING COMMUNITY TOGETHER"

## Property Features

main floor kept at 75-80 f during the day and 60-70 during the night

loft extra heated for tropical plants

## Materials used

**For Frame: 6061 aluminum**  
6061 aluminum does not rust or corrode and is well known for how easy it is to work with/weld

**For Panels: Polycarbonat panels**

Polycarbonate panels are not only light-weight but also fire-resistant



these greenhouses will provide fresh and inexpensive produce for residence

Designed by George Monaghan

monag1453@wrdsb.ca

# The Greenhouse

## Includes:

- A frame of 6061 aluminum
- Polycarbonate panels
- Main floor at 60-70 Fahrenheit during night
- Main floor at 75-80 Fahrenheit during day
- Loft is 85-90 Fahrenheit for tropical plants

## Facts:

- Spending time in a area with lots of plants can be therapeutic making you feel calm and reduce stress.
- In 2023 750 grams of frozen vegetables was around four dollars when in a greenhouse you can just grow them for free.

# The Fountain



The center  
of a  
community

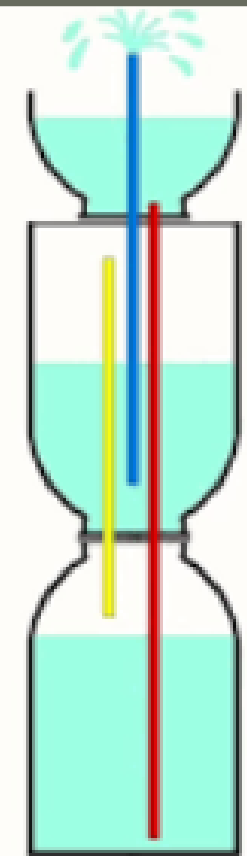
The fountain is affordability feature and a place making feature since it doesn't use water over and over, it reuses it. This important since many people in the world don't have access to water

Includes

- Air Pressure
- Air Displacement
- Water pipes
- Stone Pases

Material used

- Stone
- Vinyl
- Water Seal  
Foam



# Clock Tower



**This is not just a clock tower, this is a sign to show you, are in New Jefferson. Our clock tower lights up at 5 am and 5 pm.**

**Our group set a goal to make something everyone would enjoy and our clock tower is our way of saying, that you would always look forward to something in our community.**

# NEW JEFFERSON MALL

When a new shopping experience meets entertainment and business in one place.



## Possible stores

- Gamestop
- Walmart
- Zara
- Zehrs
- H&M
- Indigo
- sportchek
- columbia
- west 49
- winners
- mark's
- sephora
- bath & bedworks





# The Coffee Lab

## The Coffee Lab

What more could you want?

### Hours :

Mon : 7am - 8pm

Tue : 7am - 8pm

Wed : 7am - 8pm

Thurs : 7am - 8pm

Fri : 7am - 9pm

Sat : 7am - 9pm

Sun : 7am - 9pm

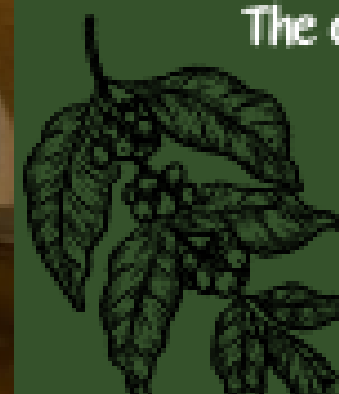
Welcome to New Jefferson's very own coffee shop!

But, you may ask, how does this benefit you? What are you gaining from this?

Coffee shops are shown to be social places in most communities, offering a place to work, relax and of course, socialize! This sense of community helps fosters relationships and build social connections!

Sumato Coffee Co. states on their blog "With the rise of the gig economy and remote work, many people are looking for a place to work outside of their homes. Coffee shops offer a comfortable and affordable workspace, with free Wi-Fi and access to coffee and snacks. This allows individuals to be productive while also enjoying the social atmosphere of the coffee shop."

The coffee lab will be sure to captivate you with it's living walls, roof patio, and use of artwork on the inside and outside of the building.





## Hours:

Mon: 6 am - 11:00 pm

Tue: 6 am - 11:00 pm

Wed: 6 am - 11:00 pm

Thur: 6 am - 11:00 pm

Fri: 8 am - 10:00 pm

Sat: 9 am - 10:00 pm

Sun: 11 am - 9:00 pm

# True Lift Gym



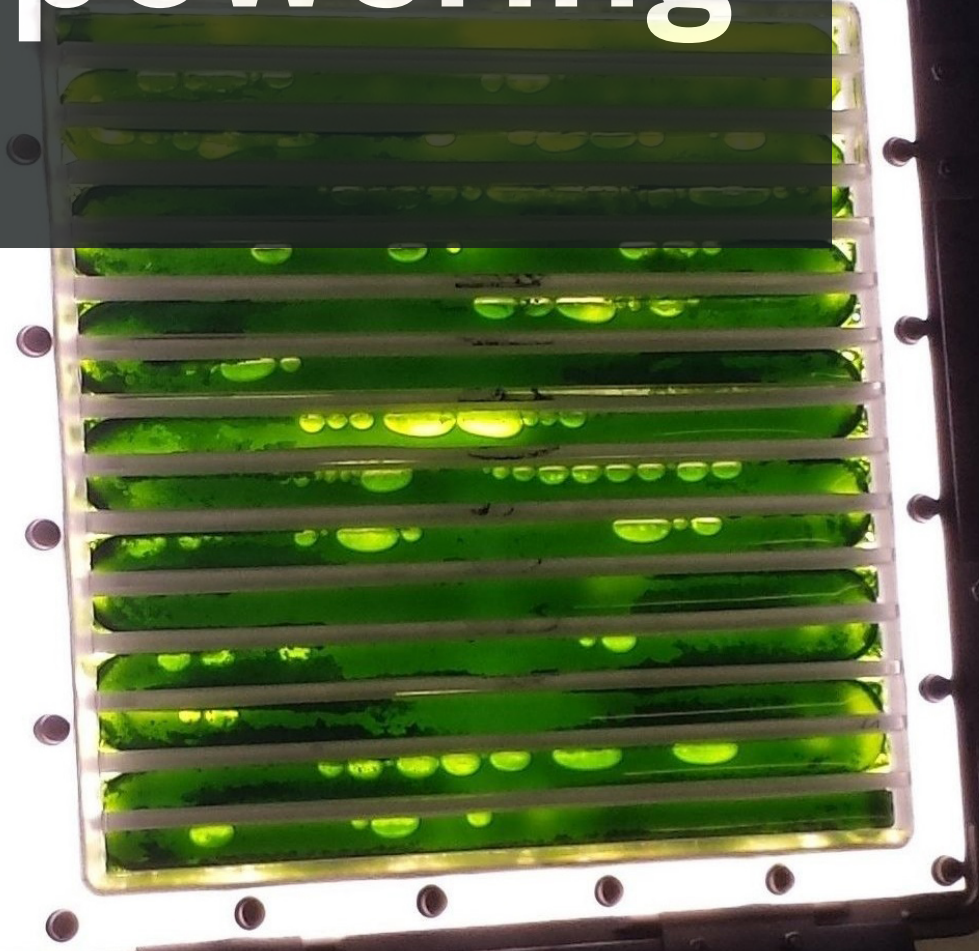
The True Lift Gym is solar-powered. In the gym, you can do all sorts of workouts to get your dream physique. Our gym also has diet plans to help with whatever journey. Enjoy our basketball court with a built-in volleyball post that raises from the ground when your ready to play. Did I mention that the Gym is 2 story's which leaves some extra room for the roof on the court.

# Solar Powering

- It takes 15 to 20 hours to power a home
- 17.5 is usually the size of a solar panel
- It has to face east-to-west so it can hit the sun
- A single solar panel produces 250 to 400
- You would have to pay upwards of \$100 for electricity
- You have to own a house, a house has to have 100 square foot roof
- Solar panels are cheaper than fossil fuels
- Solar panels aren't as good in winter
- Solar panels require more maintenance



# Algae powering



PBR@ACLS  
(Breadboard)

## what is Eutripication

Eutrophication is a process in which nutrients accumulate in a body of water, resulting in an increased growth of microorganisms that may deplete the water of oxygen.

Algae Blooms develop when excess phosphorus from detergents and sewage waste enters the water system. We can harness the algae from the bloom and use it for creating energy.

ALgae will be used to power all buildings in town so that we can save energy and be affordable kinda like solar powering. This will save lots of money so you can save for the more useful purposes in life



# Detached home



Your  
affordable  
housing  
adventure  
starts here.

The main point of our houses are that they contain cork so that if construction or if it is really cold our homes and buildings will be insulated well

- Includes :
- Cork for insulation
  - Vinyl doors and windows
  - Corragulated roof panels
  - Fiber reinforced polimer
  - Aluminum columns



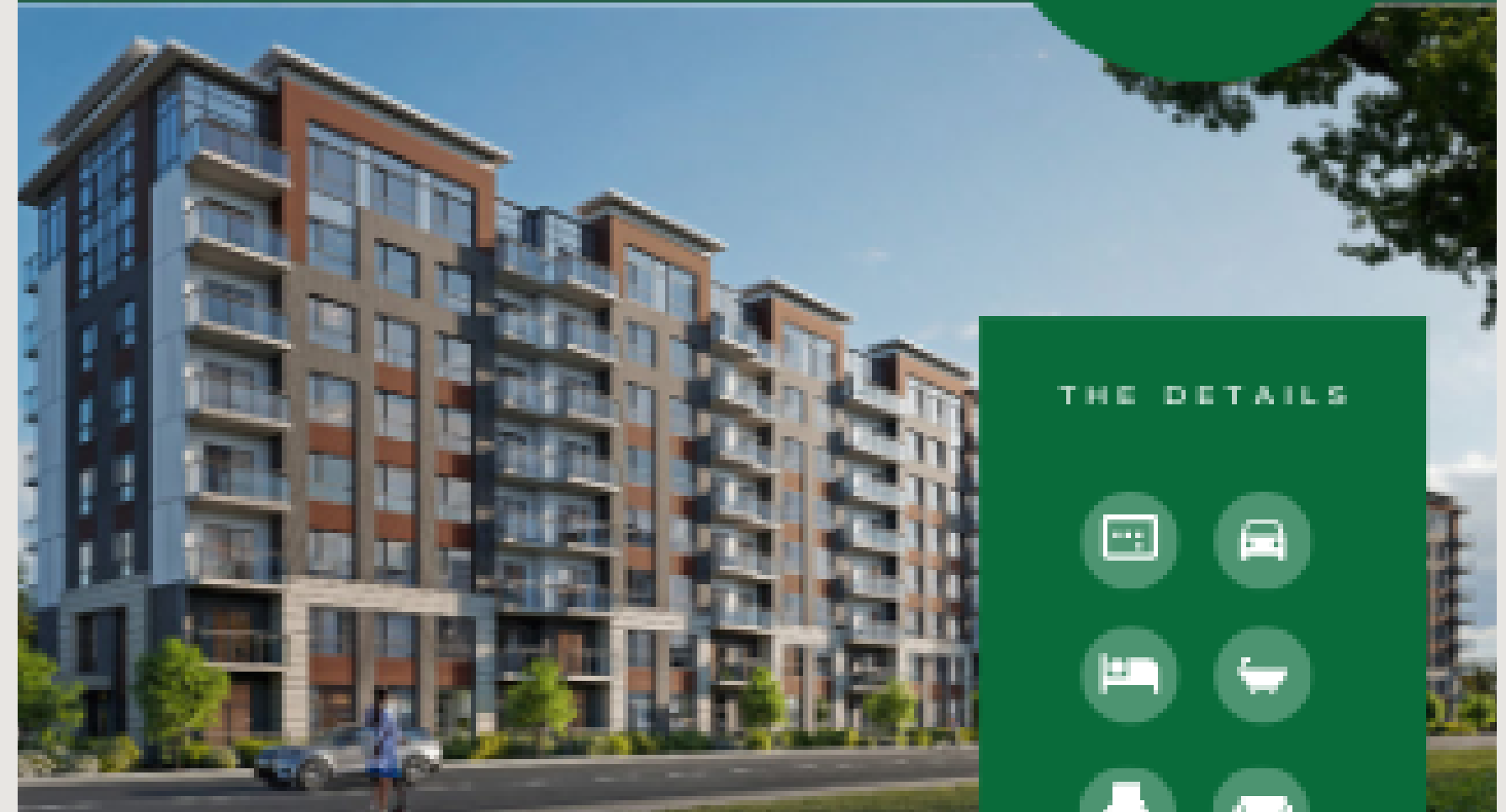
# Our Condo

## Features

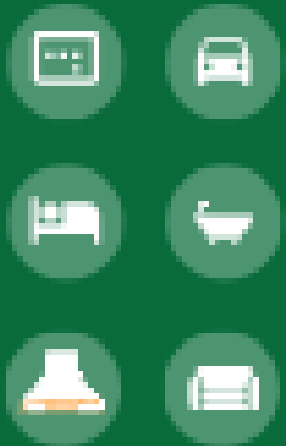
This condo is five stories tall and is two units per floor. each unit has 2 bedroom 1 bathroom, it also has a kitchen and a living room. It is easily able to have many beside each other to have a whole street of beautiful modern condos. it also has a great patio on the roof with a restaurant/coffee shop/breakfast place for the residents to have fun

## Facts

- In 2021 the average price of a single detached home was around \$750,000 where a condo unit was around \$500,000 which is \$250,000 cheaper



### THE DETAILS



## BEAUTIFUL MODERN CONDO

### SPECIAL FEATURES

this condo is five story's tall and is two units per floor. each unit has 2 bedroom 1 bathroom, it also has a kitchen and a living room. It is easily able to have many beside each other to have a whole street of beautiful modern condos. it also has a great patio on the roof with a restaurant/coffee shop/breakfast place for the residents to have fun

5 story 2

coffee/breakfast shop on roof

1 elevator in middle

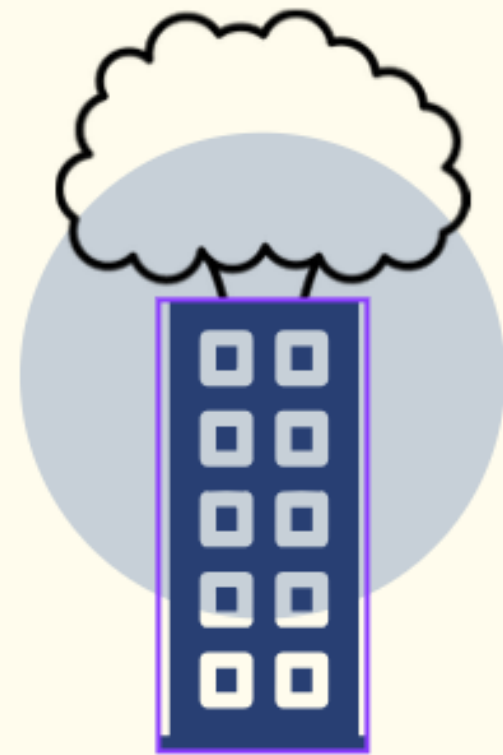
garden/park on roof

rooftop patio

# Thank You For Listening



Maria, Meena, Allyson, Seerat, Alice, Kaya, Arham, Ashaz, Nahz



**Life is within reach**

# **Lotesse**

**By Kamaras**



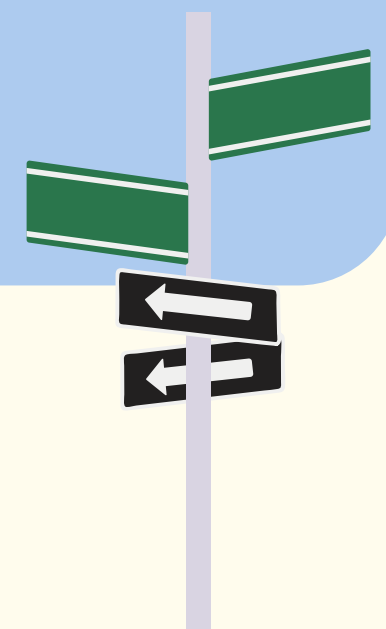
# walkability

## Physical Benefits

- Walkable communities promote a healthier lifestyle.
- Walkable communities make it so that people can walk to their workplaces without a car, this decreases CO2 emissions which makes a healthier environment.
- People who live in places where necessities are far can have their life span decreased to 4 and possibly more years.

## Social Benefits

- Being able to walk around fosters social interactions.
- It saves lives, about 1.19 million people die due to car crashes every year, walking slows down traffic and prevents accidents.
- walking can help you feel part of your community and reduce loneliness and isolation





How do we tackle the issue of  
walkability?



COME VISIT OUR TOWN SQUARE

# STAR STREET

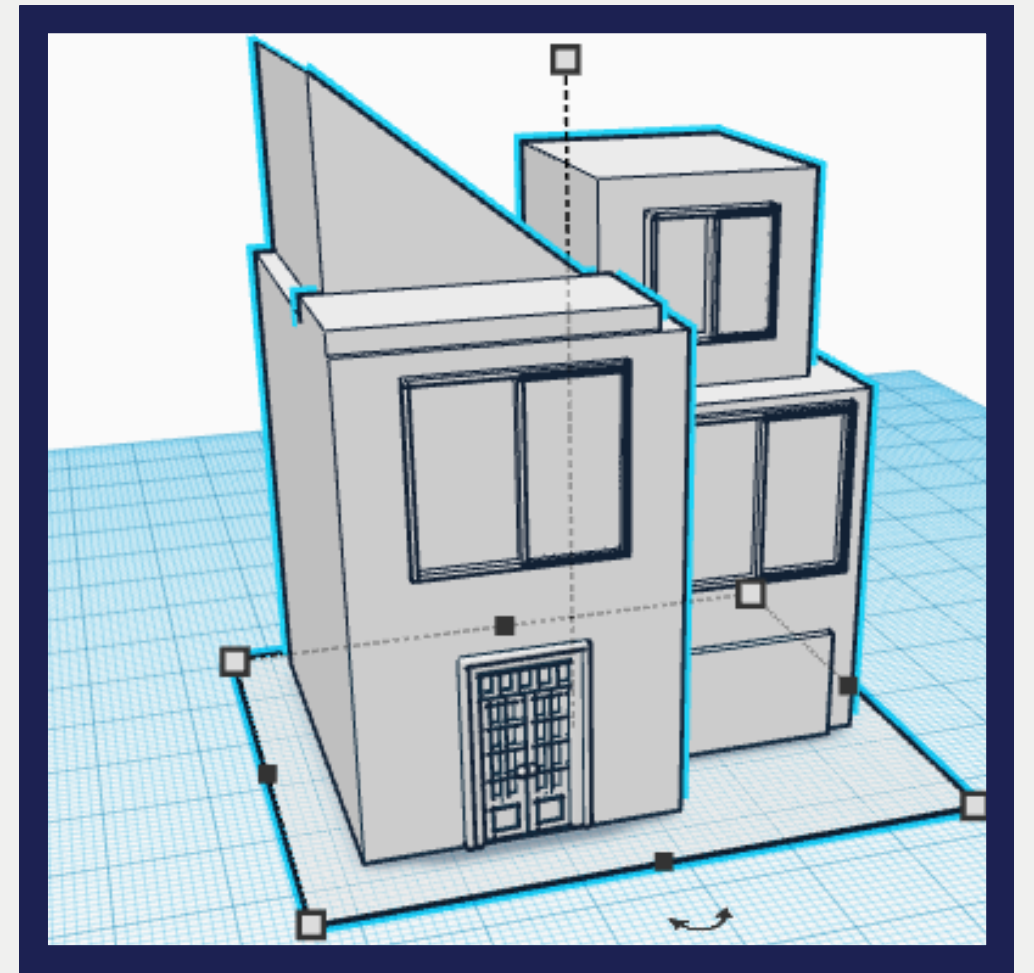
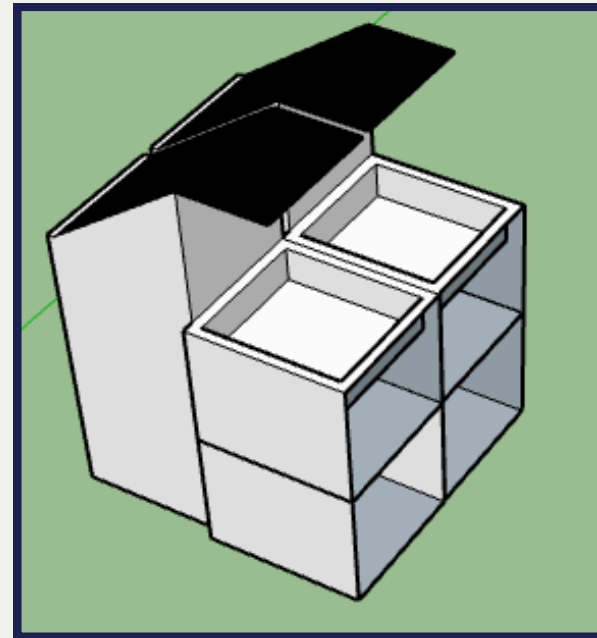
EVERYTHING YOU NEED IN ONE PLACE



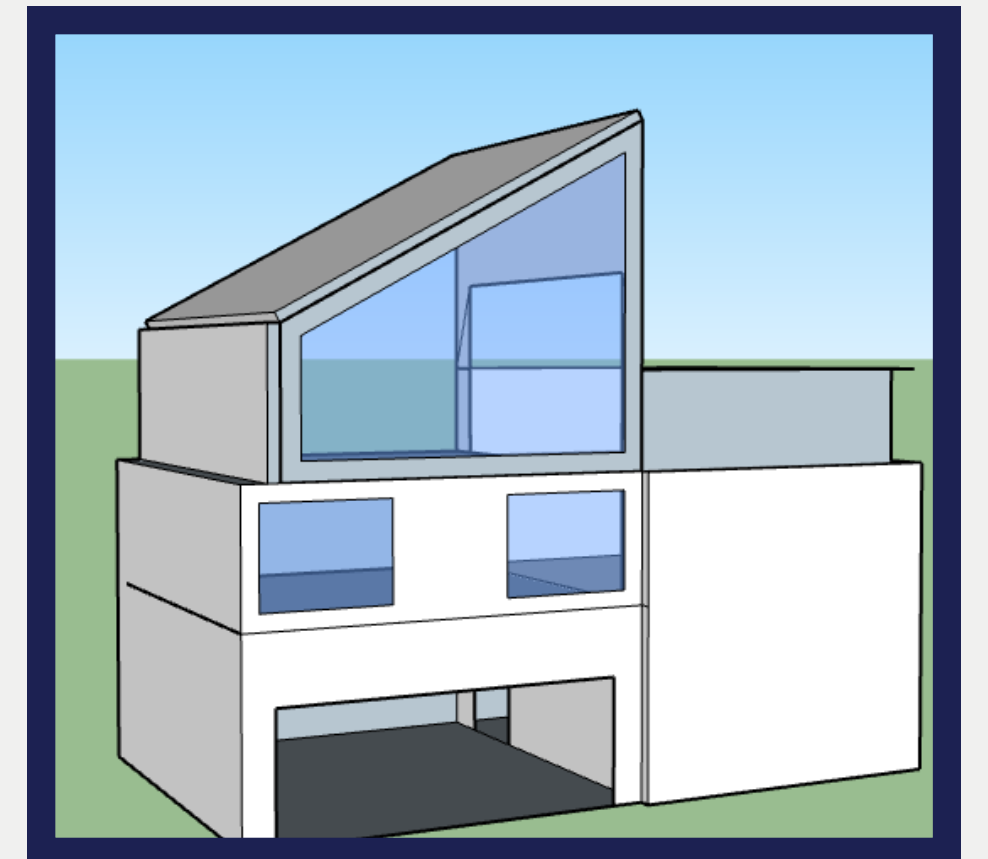
**In the center of our town square, you will see a fountain surrounded by a symbol of unit representing connections and peace.**



Having a place to meet up can benefit connections with people. reducing the feeling of loneliness, as well as having fun.

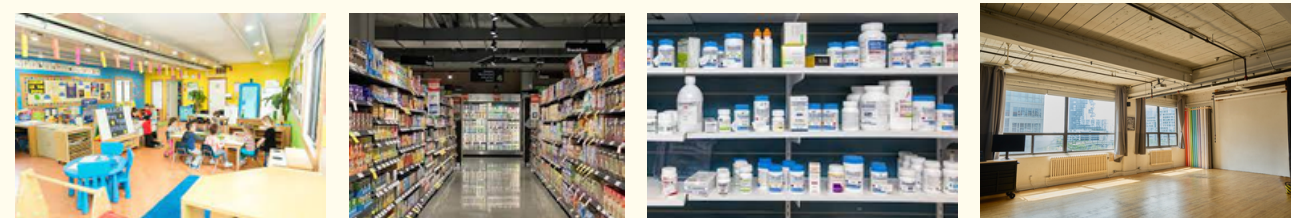


**Here are  
some  
designs  
(some AI  
generated)**



# Market Place

Did you know that there are 437,891 small businesses in Ontario alone?



- Daycare
- Grocery Store
- Pharmacy
- Rentable/Buyable Studios
- Convenience store

The inspiration was from a territory in India called Pondicherry. There's a Sunday Market that locals can sell and buy from.





- It saves way more space than normal farming, you stack up inside instead of going wider.
- You can produce even more food by vertical farming
- Often in warehouses, greenhouses, and shipping containers
- It could go along with our market (fresh produce)
- It doesn't take as much water as normal farming
- Vertical farming supports high-density areas
- It's environmentally sustainable, you can control the temperature, humidity, CO2, etc. This reduces the impact it has.



# Vertical Farming

Tickle Toe Farming Co :3



What about housing?



What about affordability?



Well, let's touch on that!

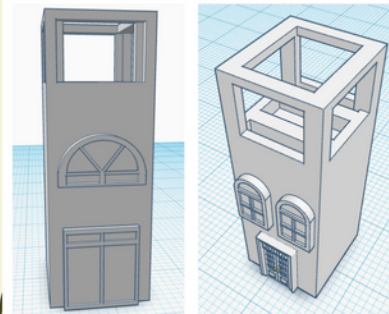


# Lotesse tiny homes

## Everything in the matter of seconds



### a quiet space



There's spacing on the top that allows for more planting. We're supposed to plant more because it's a natural air filter. Maybe as a student, you'll need a bit of a simple hobby chore to not keep you crippled because of your exams!

This tiny home also has a drying rack because electricity bills can get high when the world becomes digital. Air drying your clothes also comes with a few benefits!

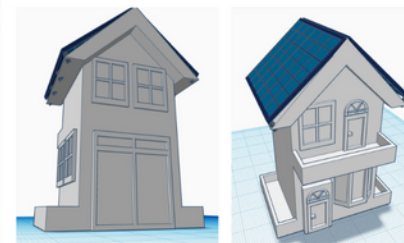
Cork may be a great insulator but in this case, we're using the amazing and versatile material to sound proof our walls. Just 3mm of cork can soundproof around 10db which is a bit loud than the sound of your breathe. Using 3cm now is 100db and that's how loud a hair dryer is. This house would contain 4 centimetres of cork which soundproofs 120db.

- Air drying can provide as a natural fabric softener
- Reduces wear and tear on clothes because they are not exposed to the harsh temperatures of indoor dryers
- Air-drying your clothes can lower the average household's carbon footprint by 2,400 pounds a year.

This house also provides low-flow faucets that reduce your water use by 30-50%. HGTV says 35% of water use goes to bathing itself. Some are using 20 gallons of water, simply on a 5 minute shower.

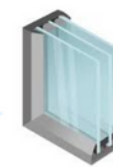


LOTESSE ; life is within reach



A house that's like the ones on Pinterest? Sign me up! It comes with innovative features and a cute design. What more could a person want? More space is just what's left to come!

Solar panels produce renewable energy. The sun isn't going to just become dark for a while so using solar panels, we can use the energy as electricity instead of coal.



Enjoy peace and quiet with our provided triple-pane windows. The energy-efficient and temperature-stabilising windows are also sturdy.

Walk through your housing knowing your bamboo flooring is durable and is also eco-friendly. The material lasts up to 25 years and is easy to maintain.

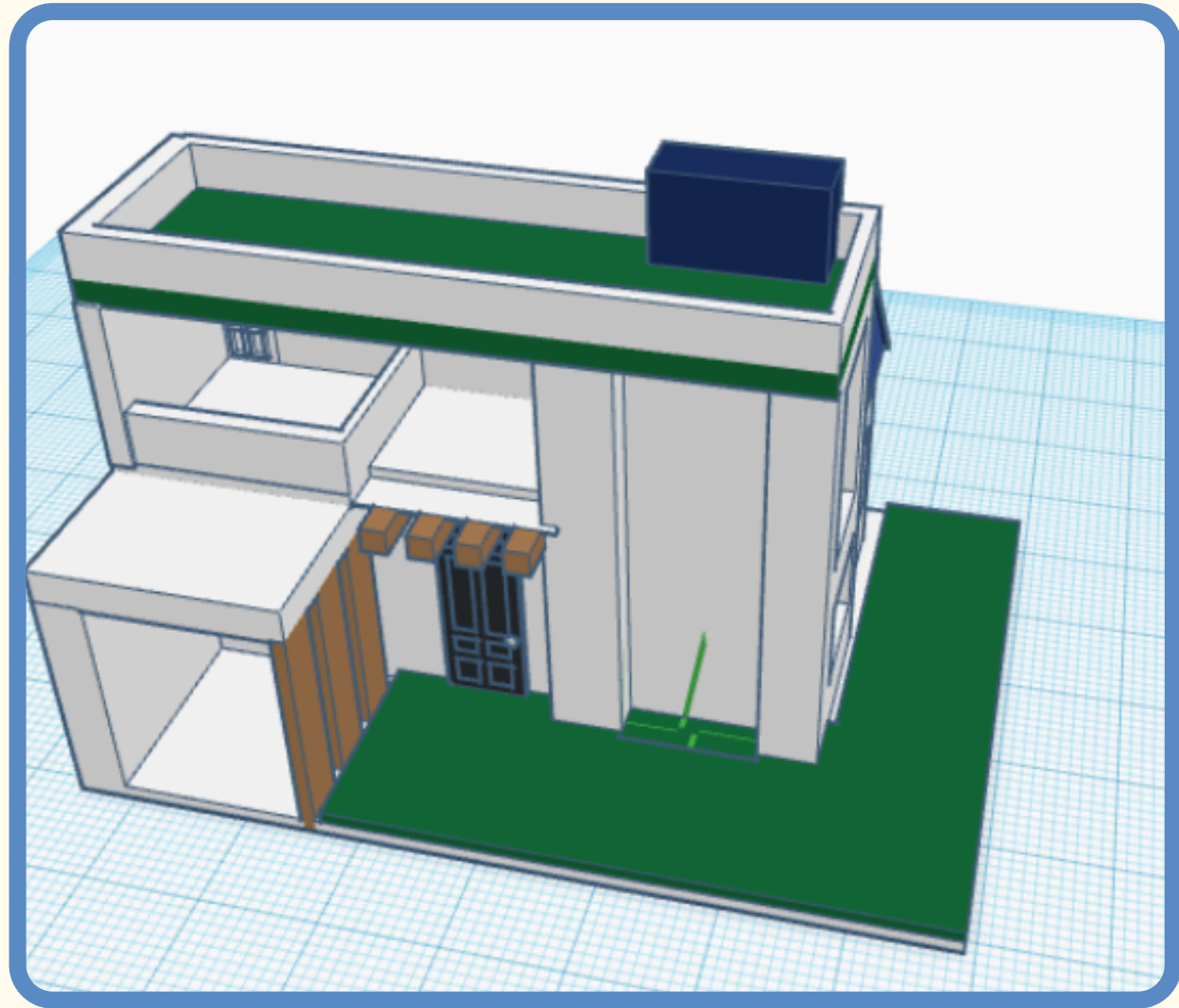


## modern euro

LOTESSE ; life is within reach

Having homes that are sustainable, and made of cheap materials can cut costs on the overall on the home. That was the approach to these homes. these 2 houses share characteristics but also have unique features to set them apart from each other.

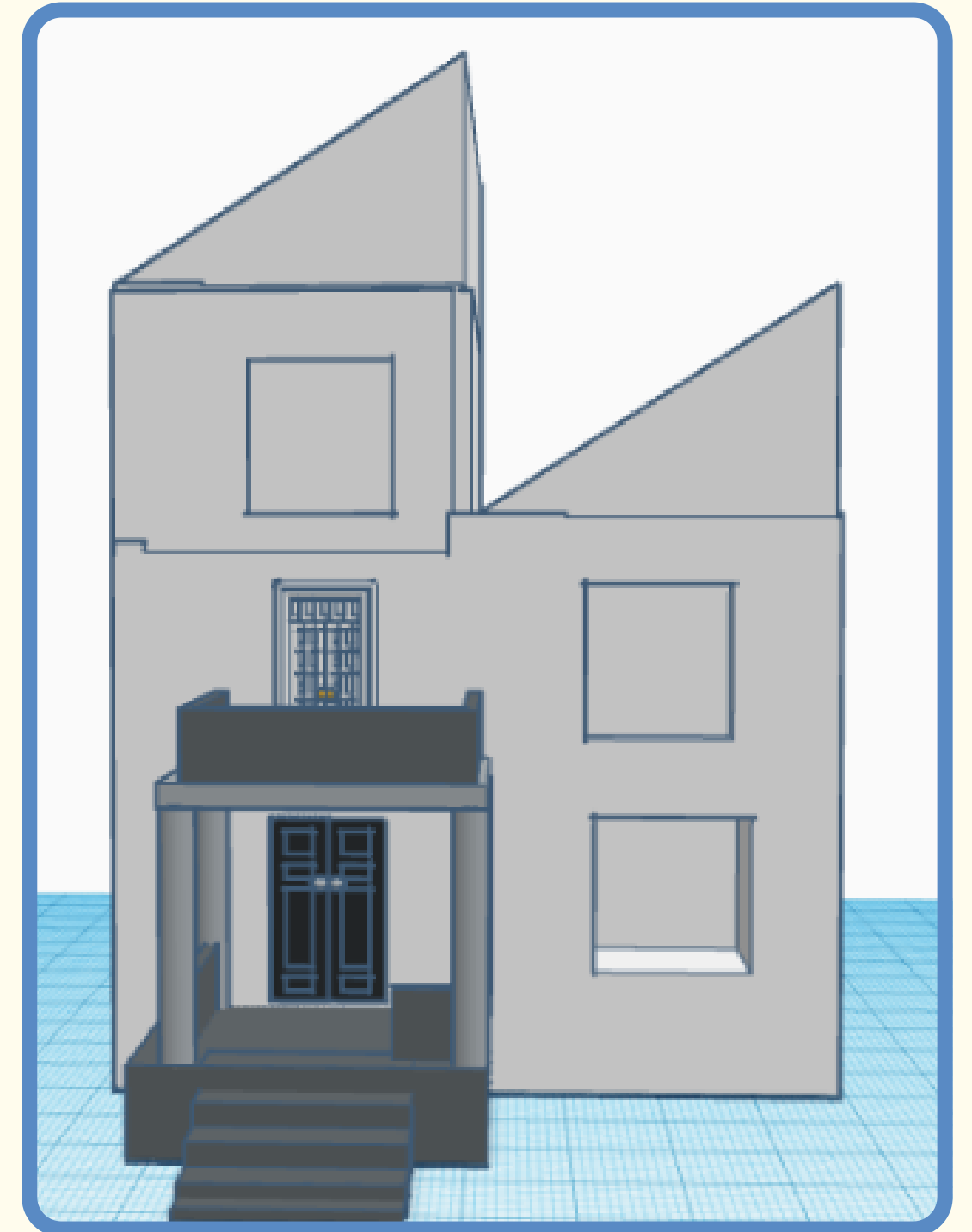
Tying to walkability, these tiny homes are placed in our market space. The idea of a place that has affordable rent and convenience nearby fuelled this part of our community. Everything in the matter of seconds



This house includes a bigger porch area so that there's more green space. The top includes solar panels as well as having a green roof.

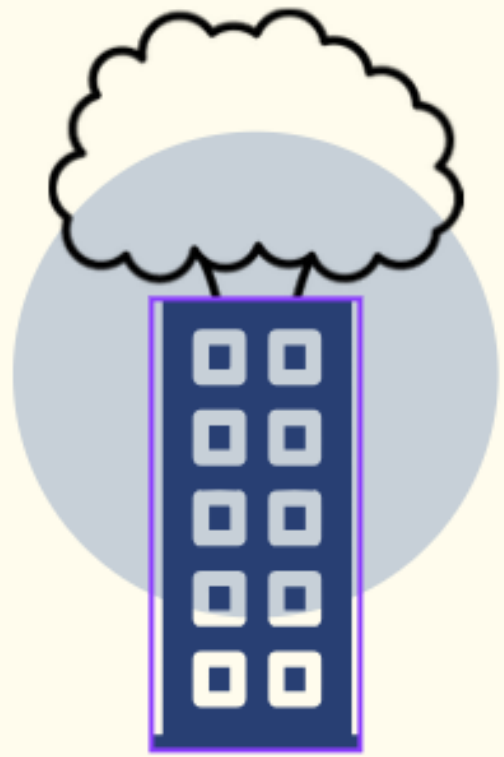


The shape of this house may look interesting, but with the heightened roof so there's less danger of pooling water. As well as hempcrete insulation for soundproofing.

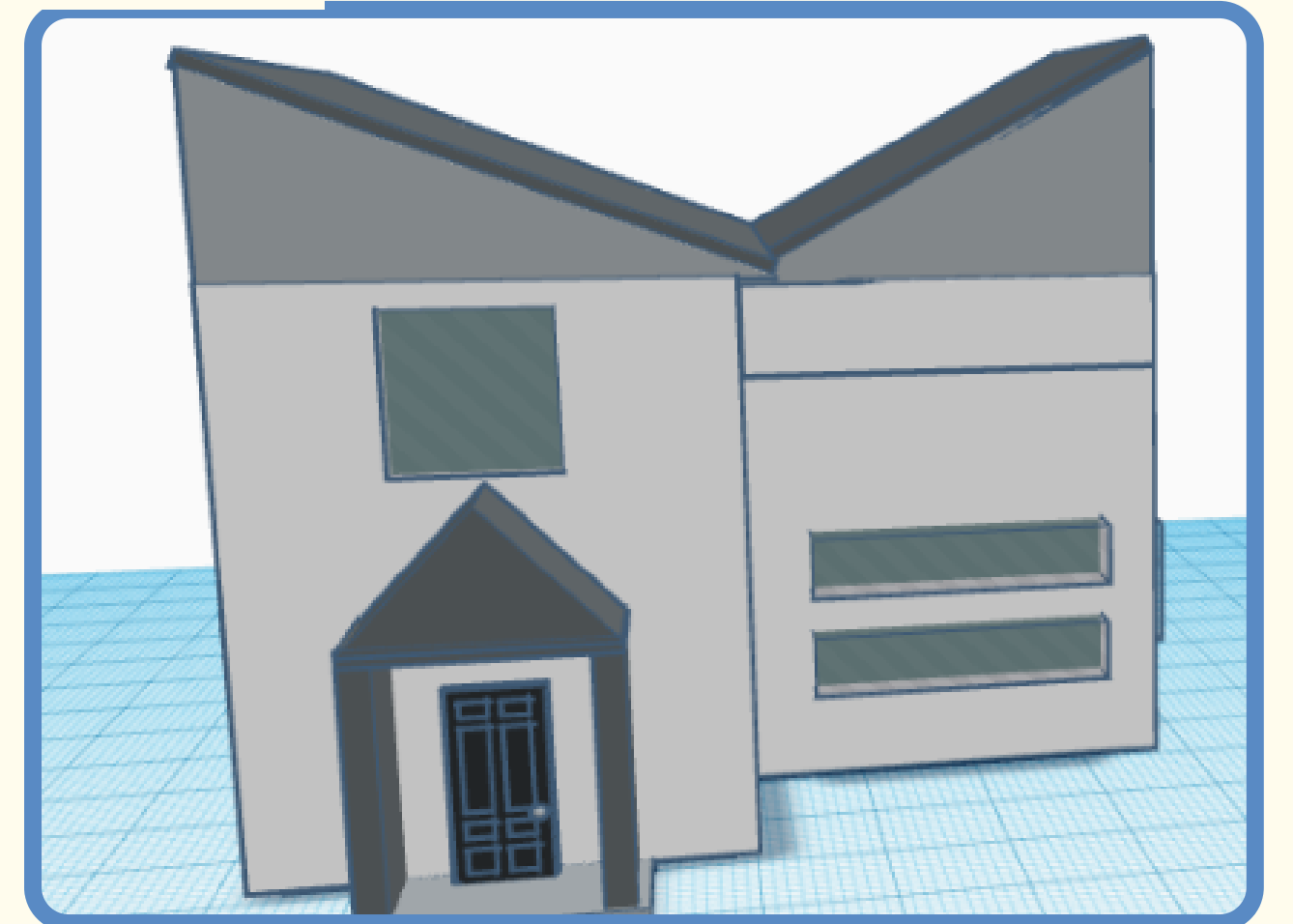
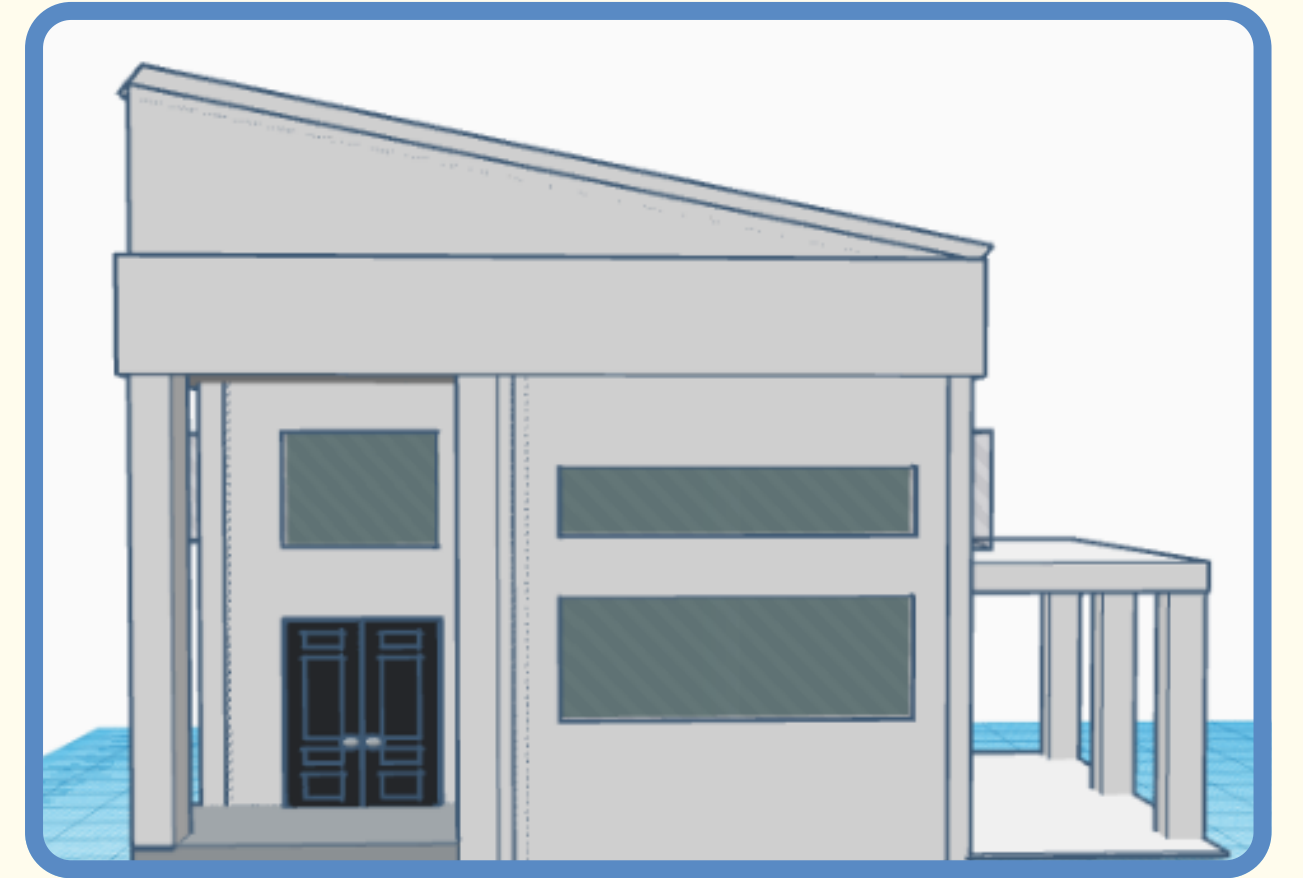
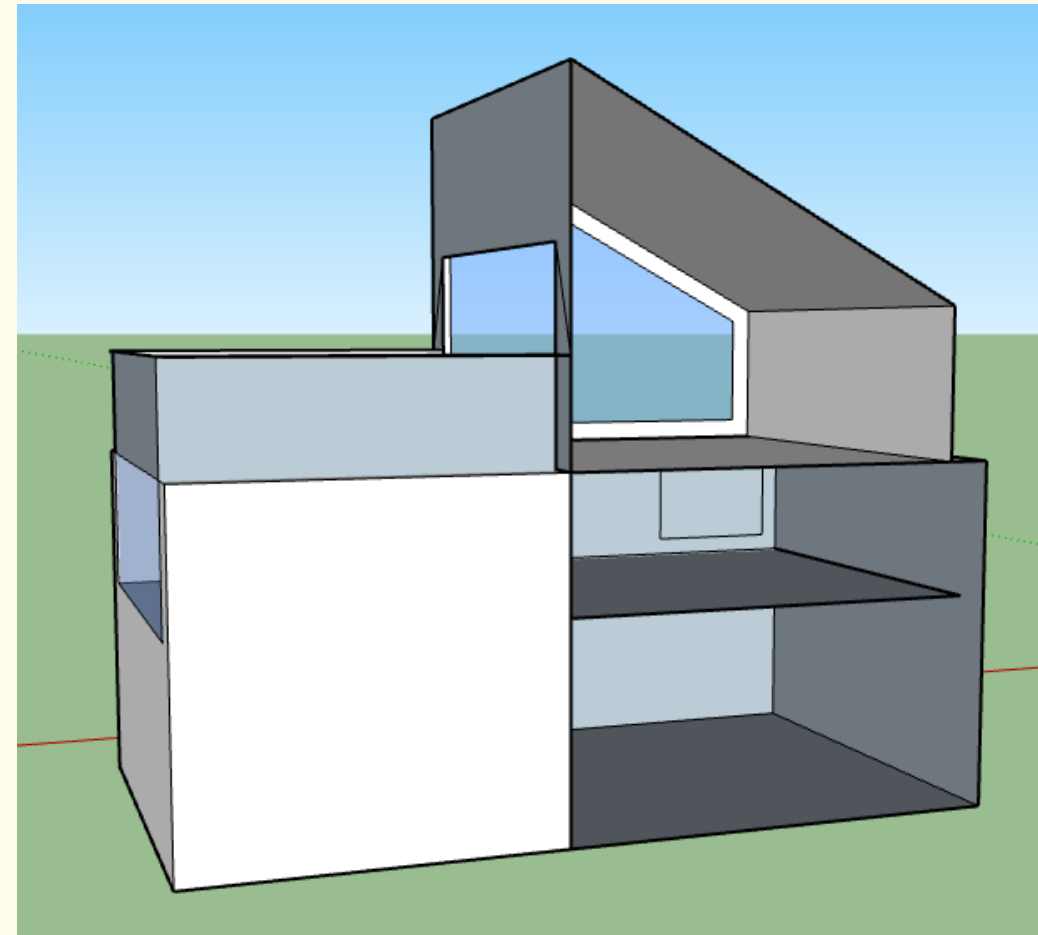


# Designs (pt. 1)

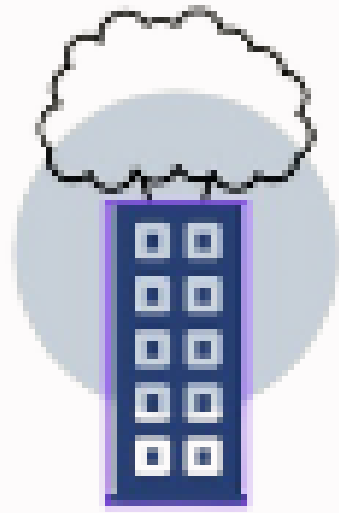
# Lotesse



Life Is Within Reach



Designs (pt. 2)



Our Pitch!

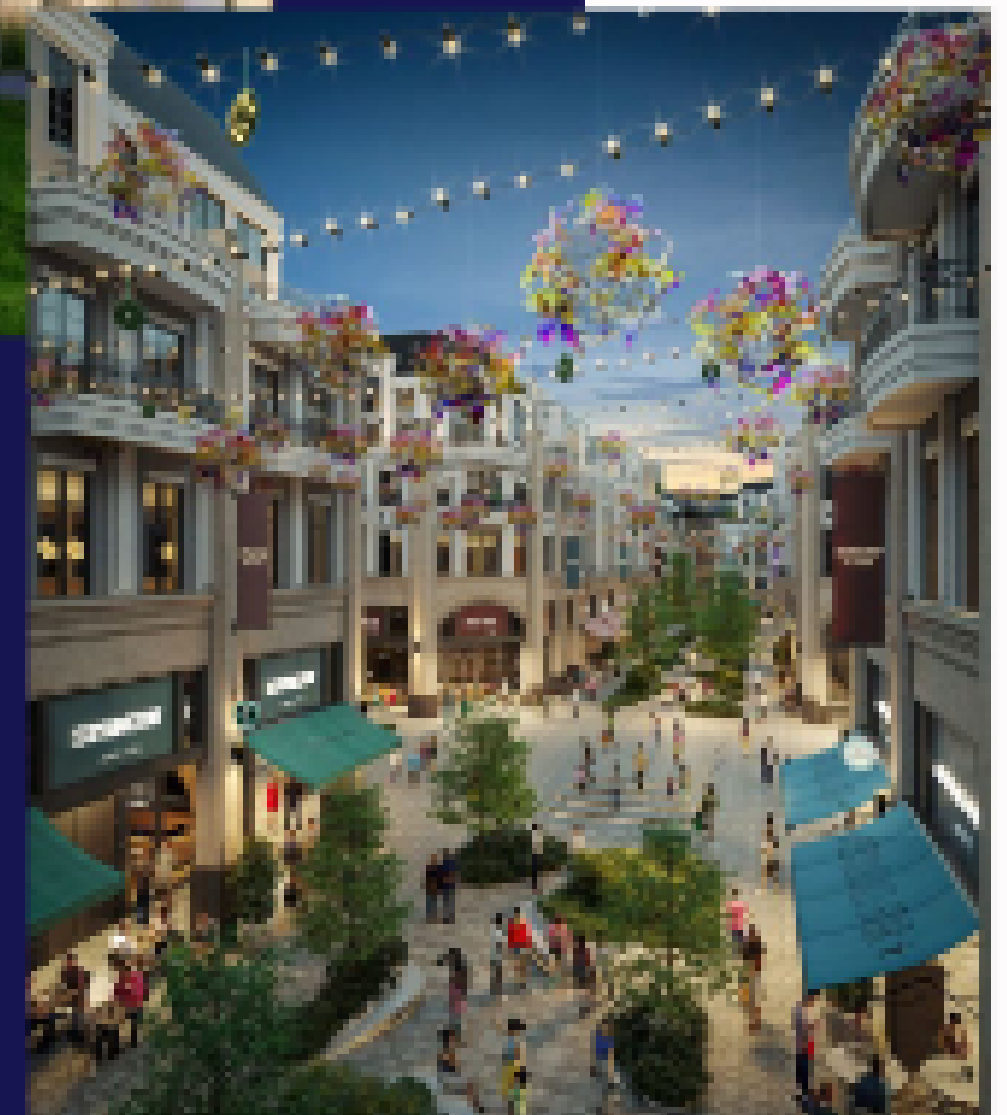
# LOTTESSE

WHERE LIFE IS WITHIN REACH

Collaboration with -



**ACTIVA**  
Bringing life to renewed places





**“Unlocking dreams one key at a time.”**

# Meet the team



Hannah



Jana



Zakaria



Audrina



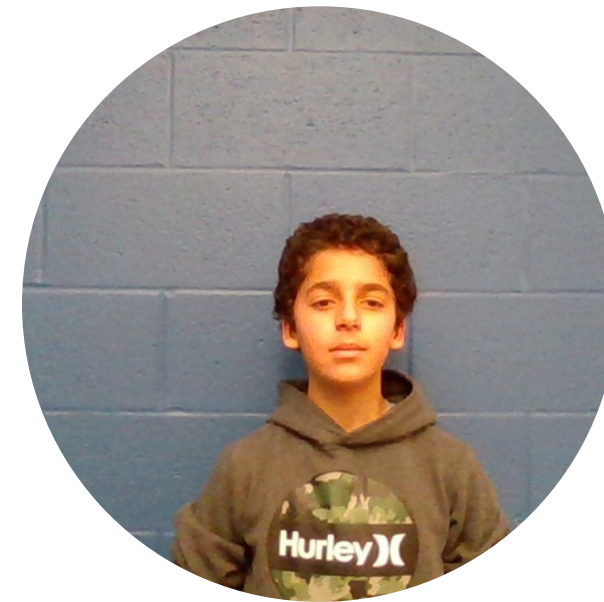
Armaan



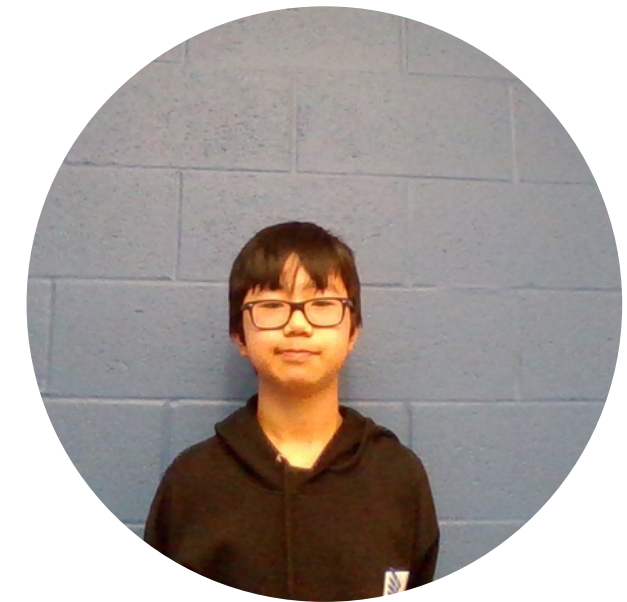
Tatiana



Isa



Burak



Lucas

Affordability

Placemaking

Innovation



MAPLE CREEK  
*Community*





# Main features



Interactive park

Walkability

Liquid tree

Co-op

Underground store  
condo

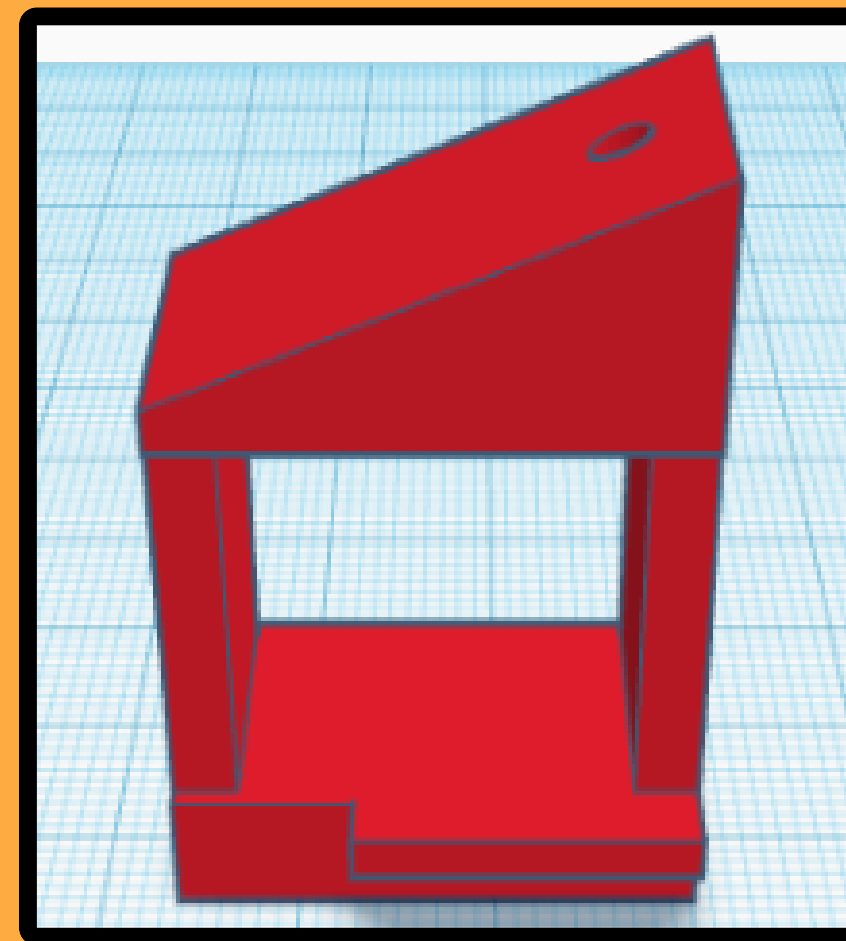
Frog apartment



# liquid tree

## video

HERE I INTRODUCE YOU TO THE LIQUID TREE! THE LIQUID TREE IS NOT ACTUALLY A TREE ITS ACTUALLY ALGAE PUT IN A TANK IT CAN PRODUCE THE SAME AMOUNT OF OXYGEN EQUIVALENT TO A 20 YEAR OLD TREE WITHOUT HARDLY TAKING UP ANY SPACE! ITS PERFECT FOR A TINY COMMUNITY WHICH NEEDS ALL THE SPACE IT CAN GET!



# MAPLE CREEK CO-OP

Get one of our best units immediately with the latest and affordable prices.

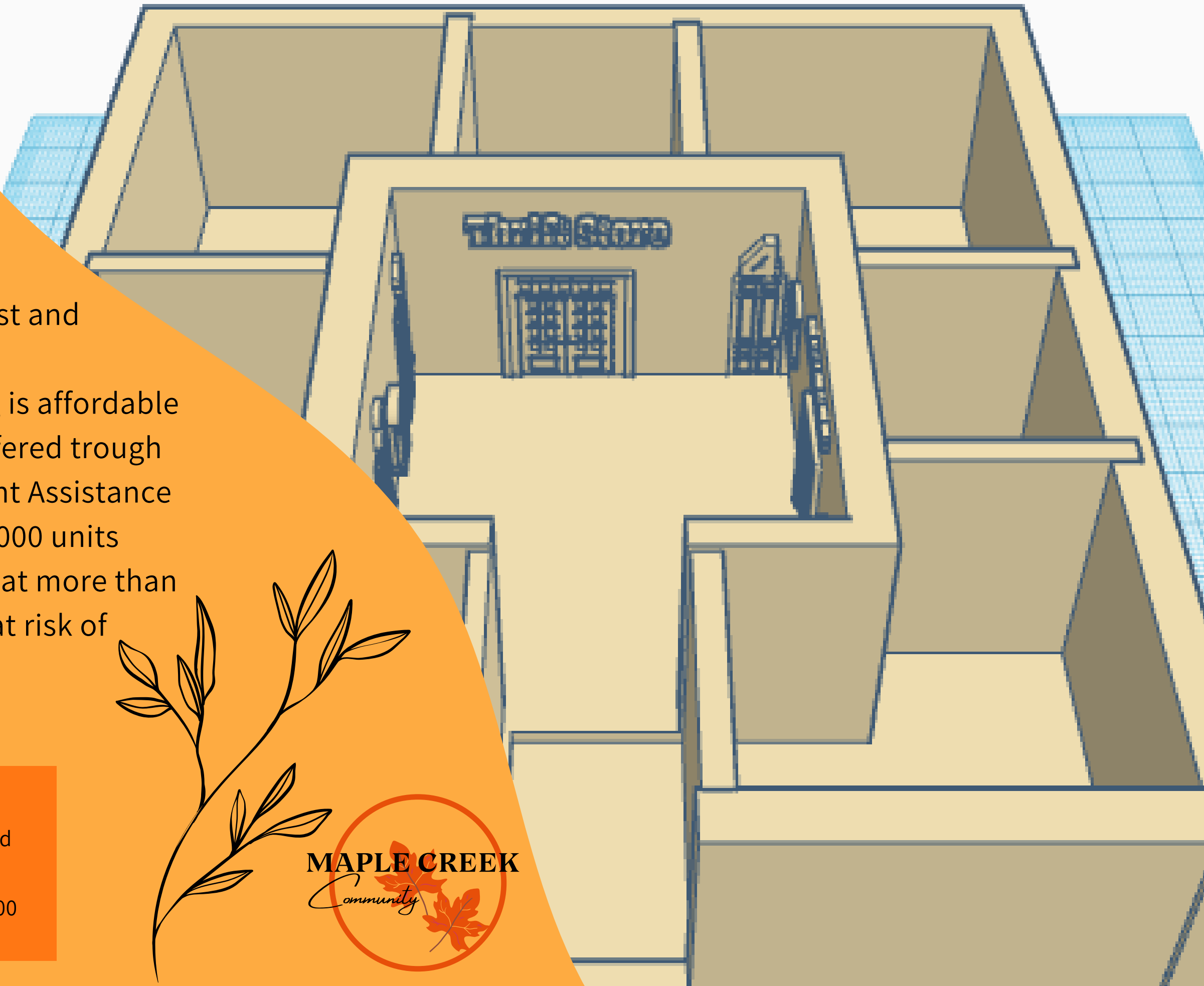
**What is community housing?** Community housing is affordable housing for people who have a low income . It is offered through three programs including Rent-Geared-Income, Rent Assistance and Below Average Market Rent. There are over 10,000 units provided through these programs. Did you know that more than 3,500 families experienced homelessness or were at risk of housing loss in 2012 - 4 percent of Waterloo region.

## Features:

- ✓ thrift store
- ✓ 5 rooms
- ✓ free daycare
- ✓ park
- ✓ close to stores and restaurants
- ✓ rent is \$250 to \$500 dollars



**MAPLE CREEK**  
*Community*

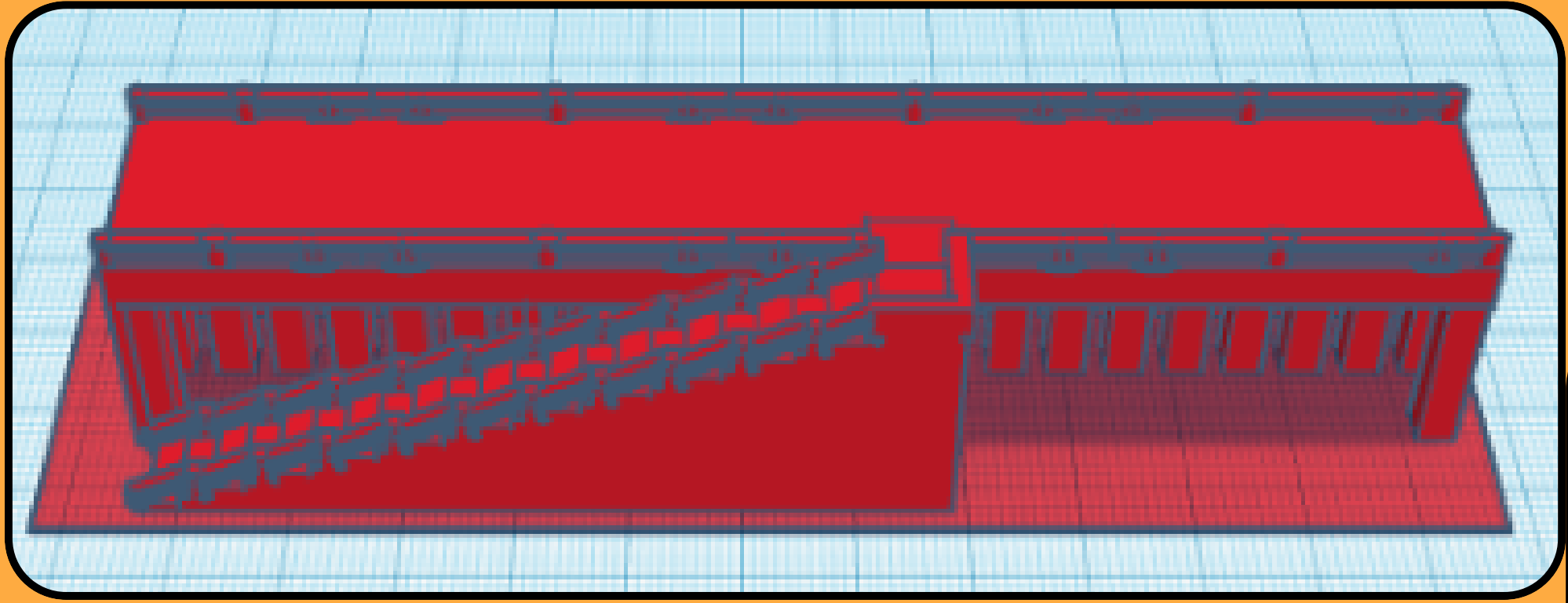


# Underground store condos

- underground parking
- ground level stores
- green roof
- gym
- daycare
- rooftop patio
- Everything you need  
in ONE place



# MAPLE CREEK SKY TRAIL



## WHY PEOPLE SHOULD WALK

When kids are younger they are involved in activities and as you get older and are working you stop moving as much. These trails will encourage more walking. The trail goes from one side of the community to the other side.



## FACTS

- The skyline is recycable
- There in QR codes on the trail for more information
- Safety features

WALKING AT LEAST 30 MINUTES TRUSTED SOURCE A DAY, FIVE DAYS A WEEK CAN REDUCE YOUR RISK FOR CORONARY HEART DISEASE BY ABOUT 19 PERCENT TRUSTED SOURCE.

It has a small road for Bikes, Rollerblades and scooters. At winter people will ice skate under the sky trail

MAPLE CREEK  
*Community*



1. Gardens along the sky trail so people can enjoy the greenery
2. Art will be displayed along the trail, interact with the Where are you From Map
3. Sky trail connects to the bridge entrance to the community and the plaza



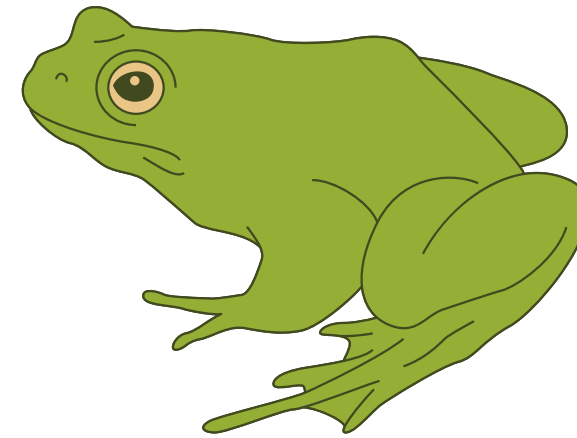


# MAPLE CREEK Community


# YOUR PERFECT

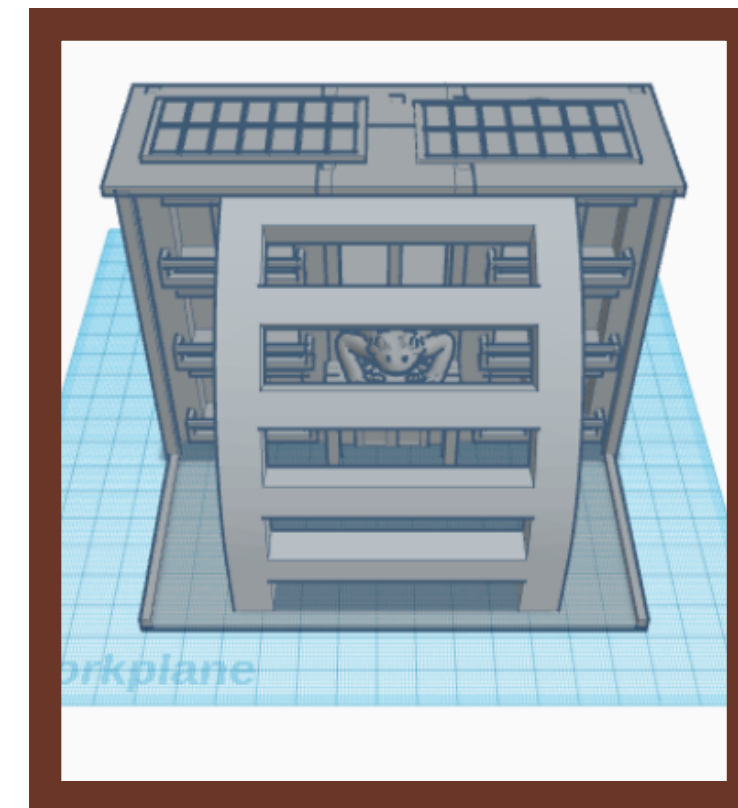
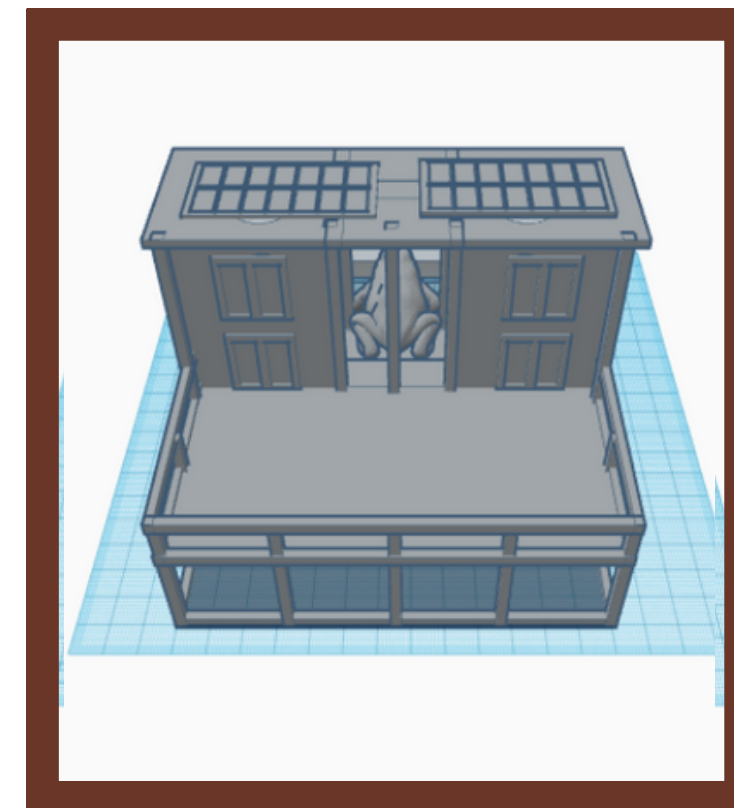
**Apartment**

2K per month

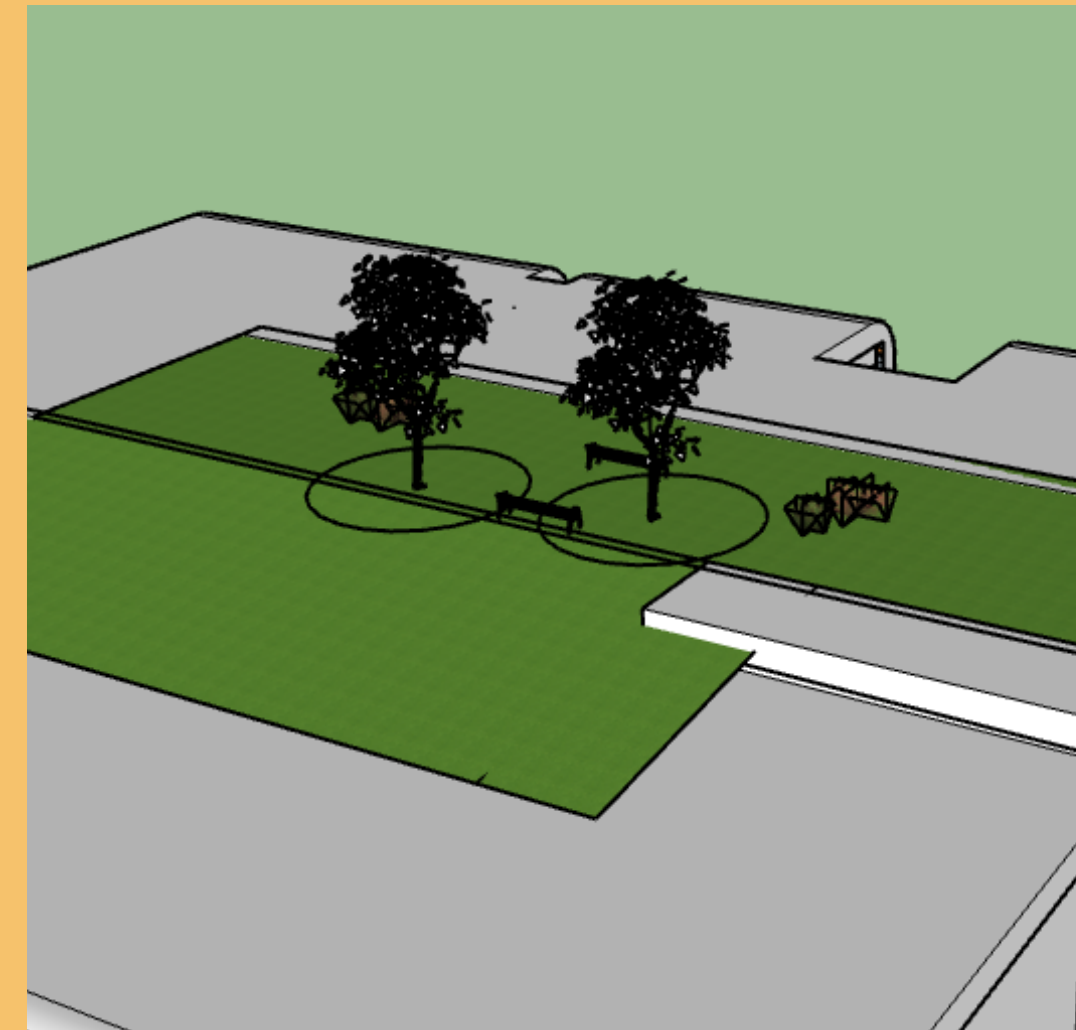
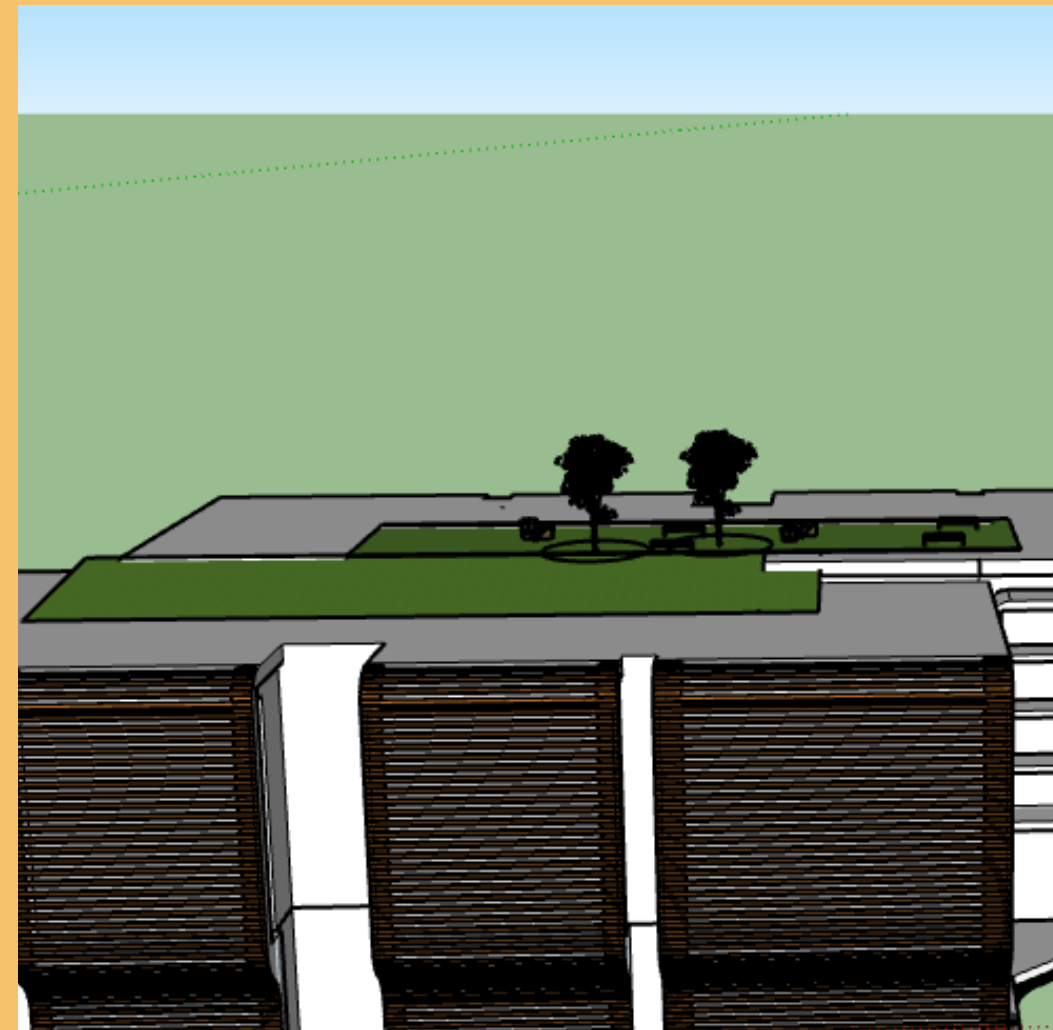


## APARTMENT FEATURES

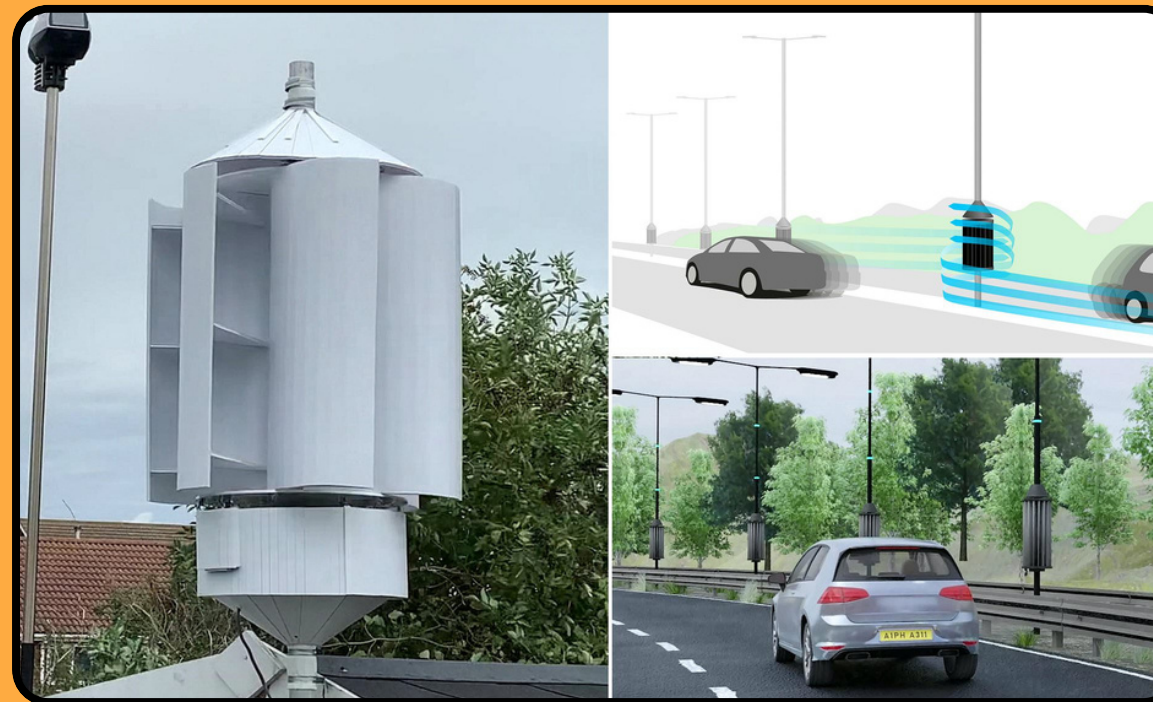
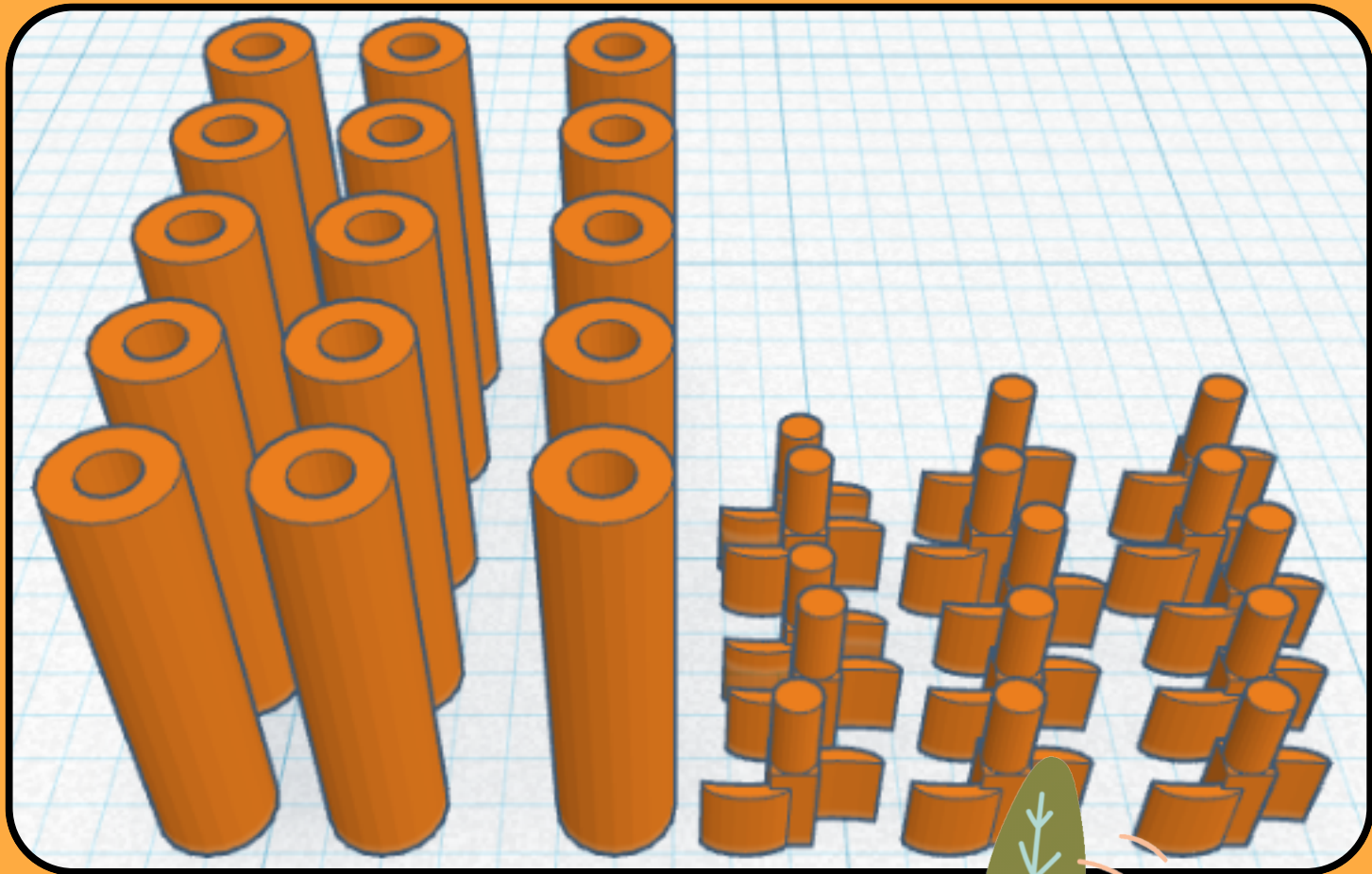
- 
- 1.) **Energy Use, Solar Panels**
  - 2.) **Green Walls**
  - 3.) **Eco-Friendly**
  - 4.) **Lounging Area (Blocks Sunlight.) With A Blocking Sunlight Design**
  - 5.) **Each Room Includes A Balcony**
  - 6.) **2 More Lounging Areas At The Back**



# ENVIRONMENTALLY FRIENDLY SCHOOL



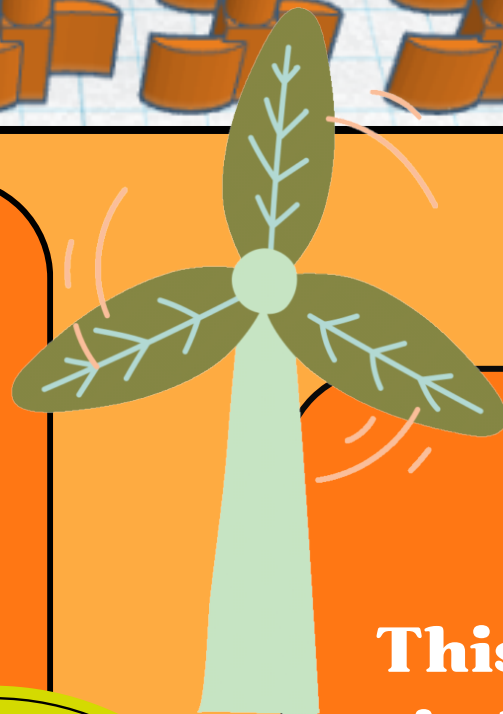
- Its partly powered by solar panels
- It has field maintenance
- It has living walls
- It has a green roof hangout to improve the breathing around the school



# Traffic Powered Wind Turbines

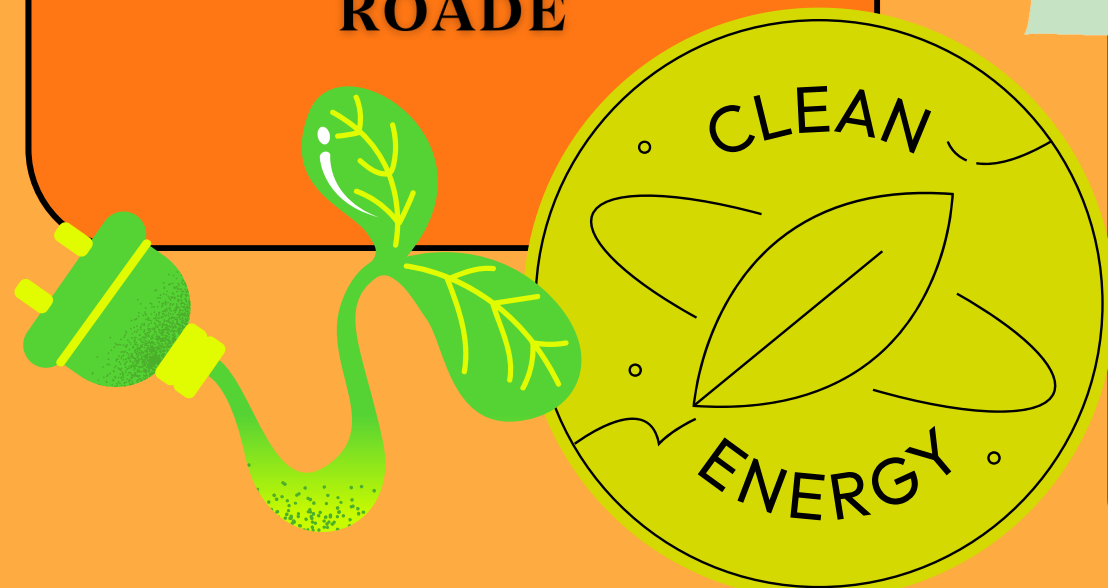
## FACTS

- IT COULD MAKE ABOUT 200 WATTS PER DAY
- IT CAN BE ANYWHERE IN THE ROAD

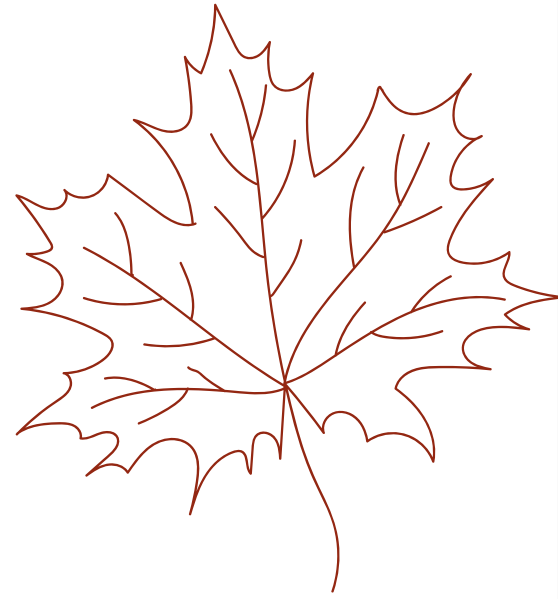


## HOW IT WORKS

This energy can be generated by using an array of vertical axis wind turbines (VAWT) located in the middle of the highways and that can deliver an essential significant amount of wind to rotate a wind turbine due to high-speed vehicles moving in both directions and the natural localized wind.

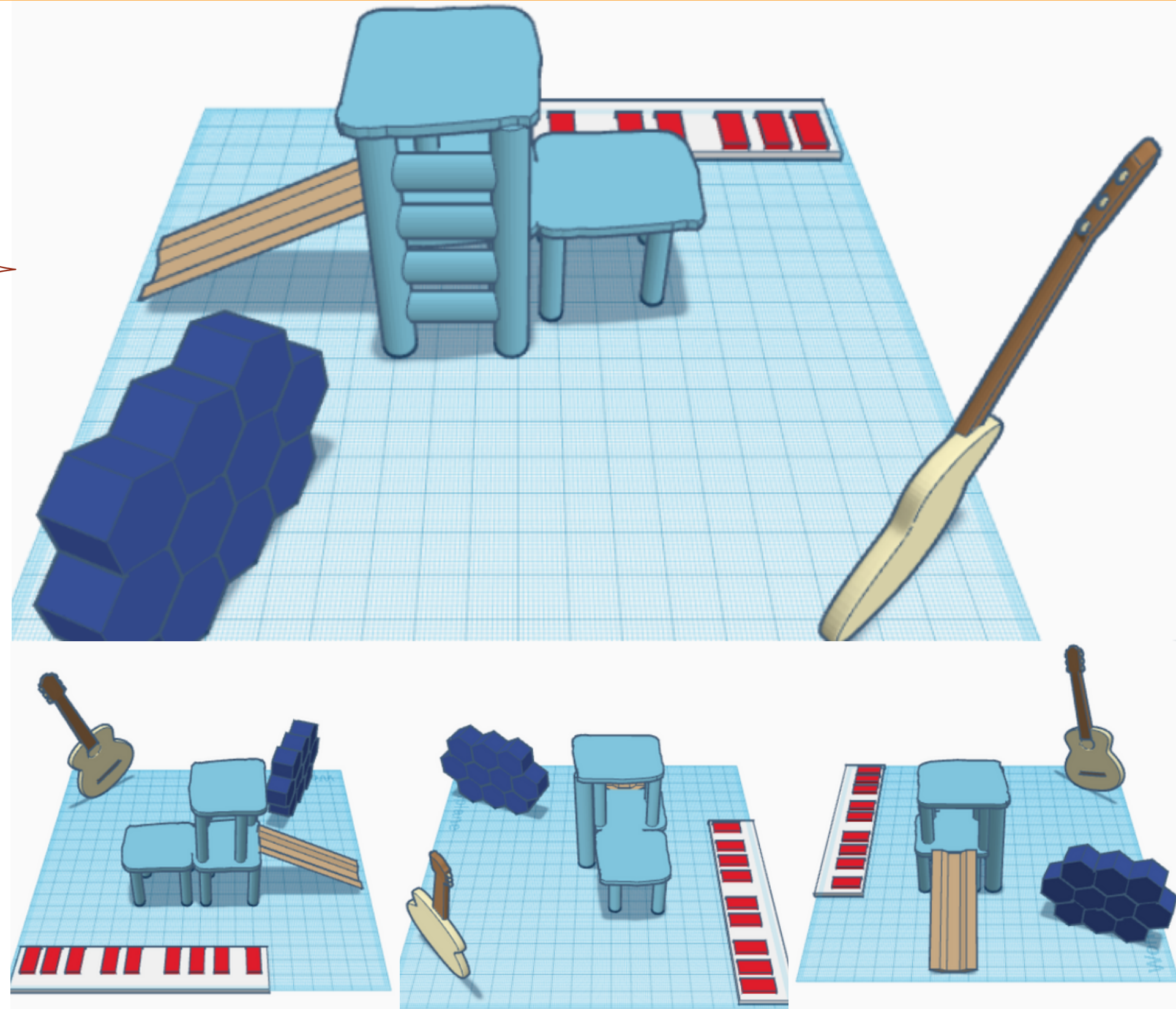


# INTERACTIVE PLAYGROUND



## ABOUT THIS PARK:

This isn't your ordinary park, it's a park designed for you to find your inner musician. Come and play at our modern and innovative design guaranteed to bring out your inner child.



**LOCATION: THE HEART OF THE COMMUNITY**





**THANK YOU**

for your time



@AGRITECH



PROJECT

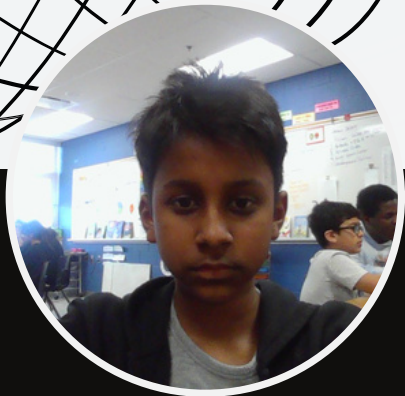
AGRITECH

Born To Make Your Dreams Come To Life



@AGRITECH

# OUR TEAM



Nicholas  
Hiralall



Yaseen  
Mirza



Mehtaab  
Randhawa



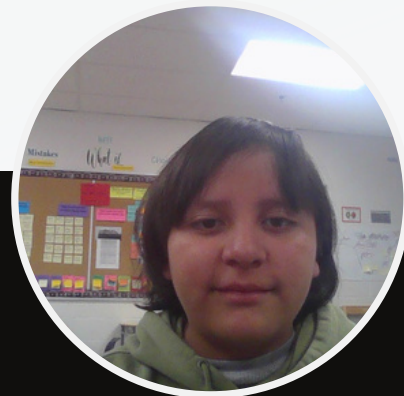
Anhad  
Wadhwa



Derek Wu



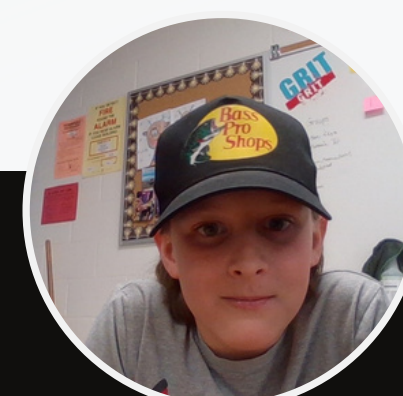
Abdul  
Mohiuddin



Emi  
Gonzalez



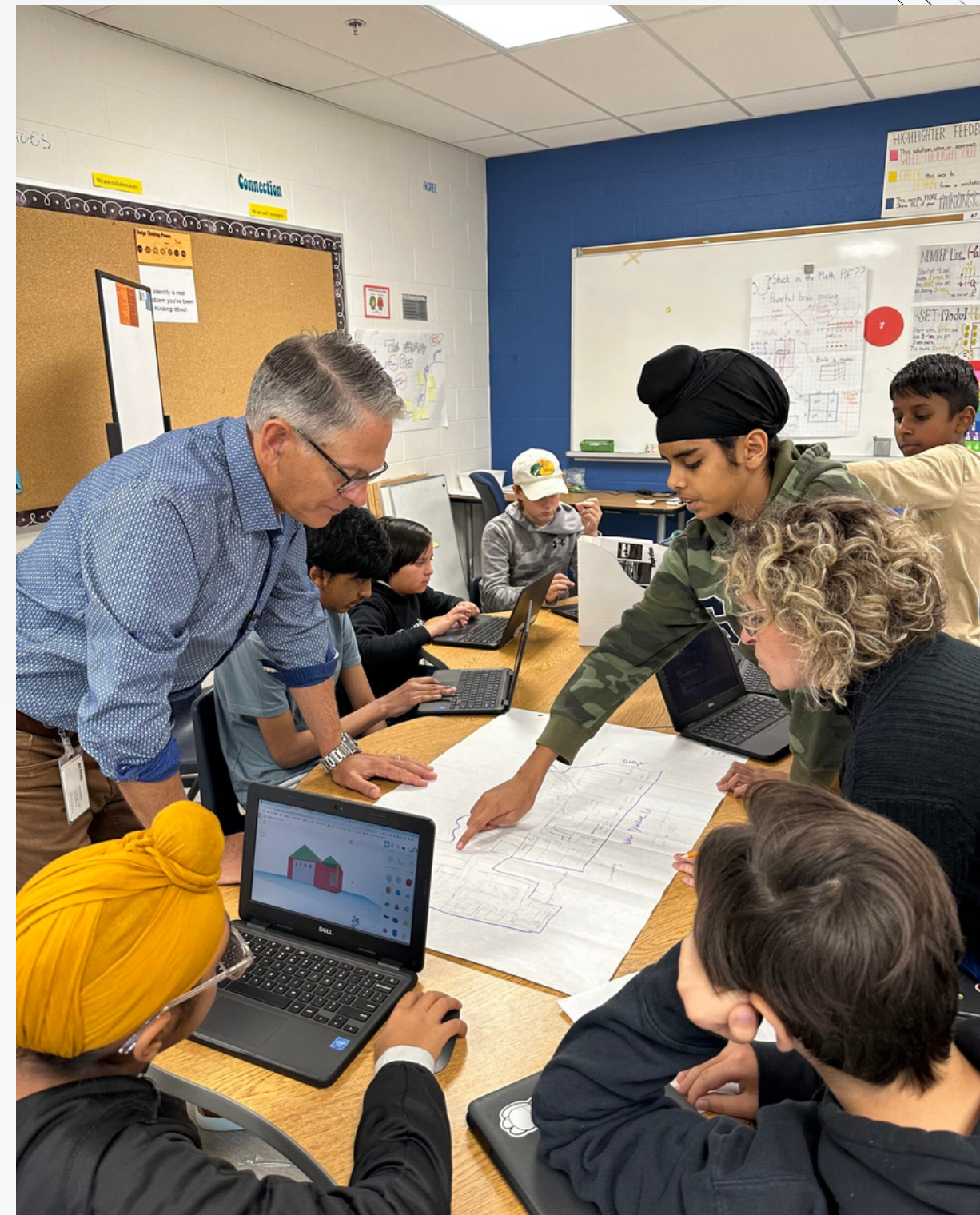
Farid  
Alvarez



Nicky  
Elsdon

How might we design a community that meets the growing population demands and still leaves something behind for future generations?

@AGRITECH





@AGRITECH

# WHY AGRITECH?

AGRICULTURE,  
TECHNOLOGY,  
ARCHITECTURE



# OUR GOALS

We wanted our community to address many problems

- Sustainable Living
- Affordability
- Innovation



# SUSTAINABLE FEATURES

## **RENEWABLE ENERGY**

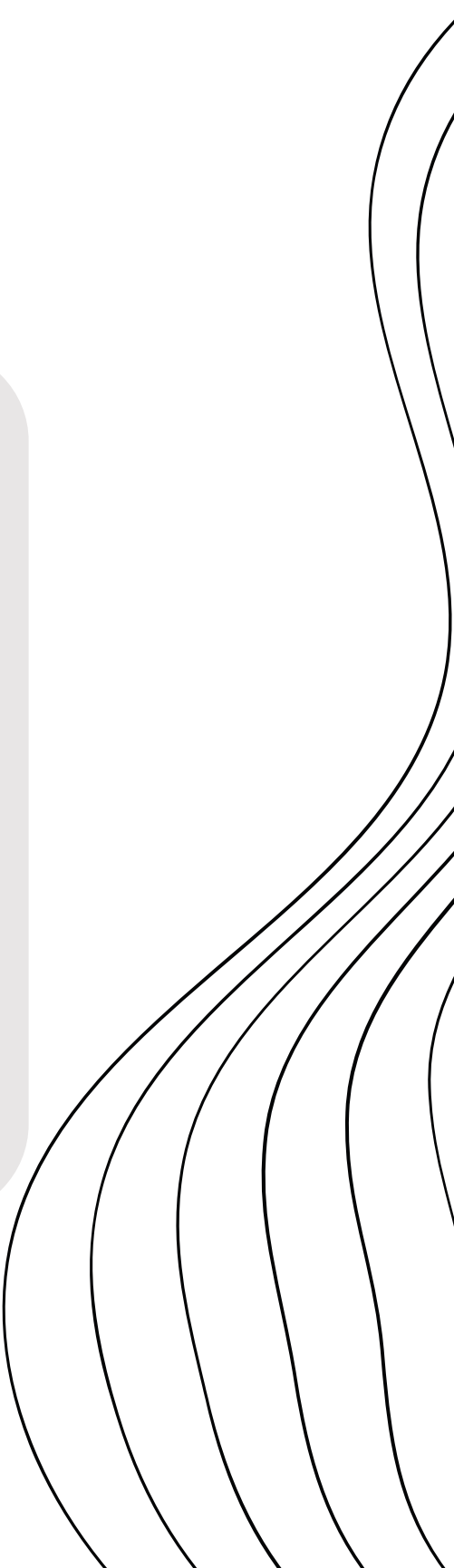
Solar Panels  
Heat Pump  
Rainwater  
Catcher

## **SUSTAINABLE MATERIALS**

Cork  
Lumber  
Raw Material  
Bioplastic  
sidewalks

## **SUSTAINABLE BUILDINGS**

Condo Corner  
Net zero homes  
Community club  
Religious places





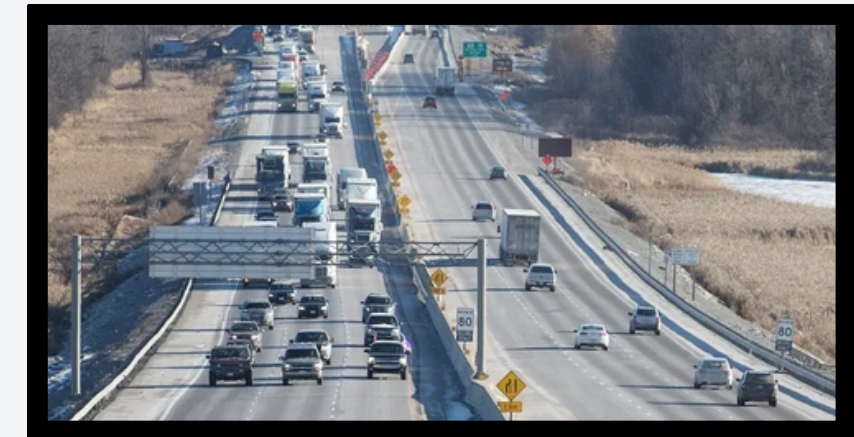
# PERVIOUS AND IMPERVIOUS SURFACES

## PERVIOUS

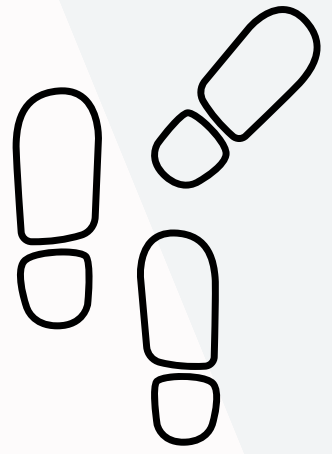
- Pervious surfaces are natural and green.
- Good for mental health
- Less roads
- Clean water
- Less carbon emissions
- Cools the earth
- Free!

## IMPERVIOUS

- Unnatural/ man made
- More roads = More cars
- Dirty water/ flood
- Heats the earth
- Boring
- Takes up space and money







## Town Trails

- Accessibilities are within walking distance
- Trail integrated between towns for less road and more walking

# WALK-ABILITY

- 15-minute cities or (superblocks)
- Work, Play and Live



## Pedestrian Bridges

- Over-head walkable bridges
- Fewer roads
- Safety of everyone
- Promotes Walking
- Fast and Efficient
- Japanese Concept

# AFFORDABILITY

Affordable housing is super important for making awesome communities. It's like the foundation that helps everyone in society. When people can easily find a good place to live, it keeps them healthy and happy

- Take up less space and fits more people
- Low Maintenance
- More Amenities
- Affordability

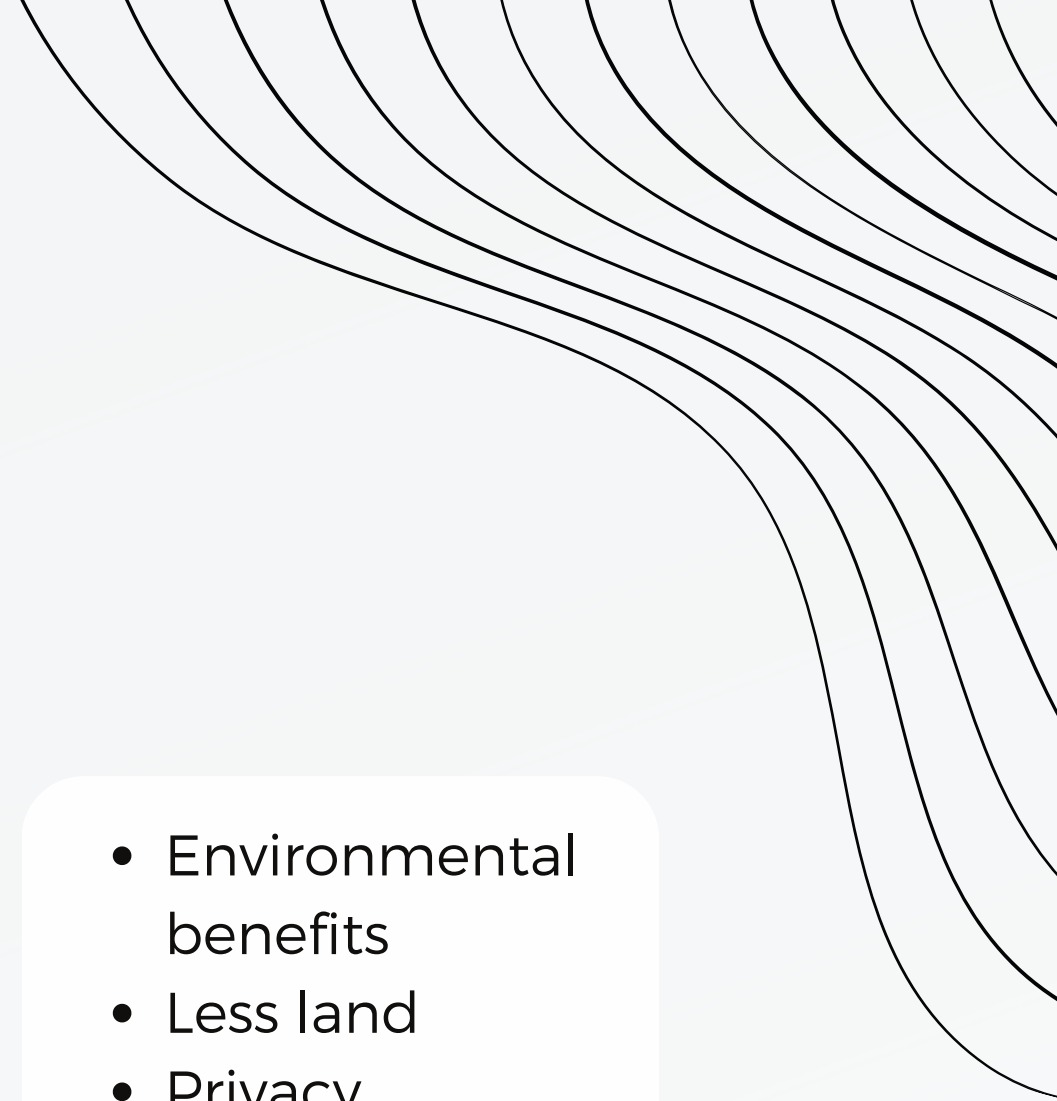
**CONDOS**

- Cost Effective and Value for Money
- Low Maintenance
- Affordability

**TOWNHOMES**

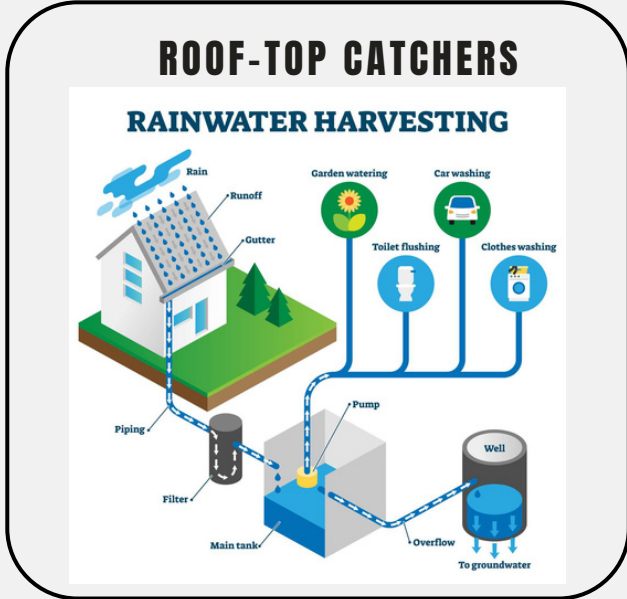
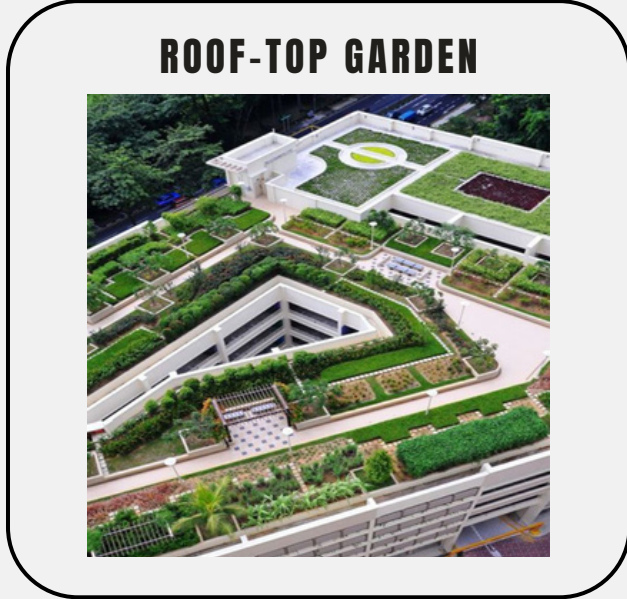
- Environmental benefits
- Less land
- Privacy
- More Units
- Affordable

**HIGH-RISE**



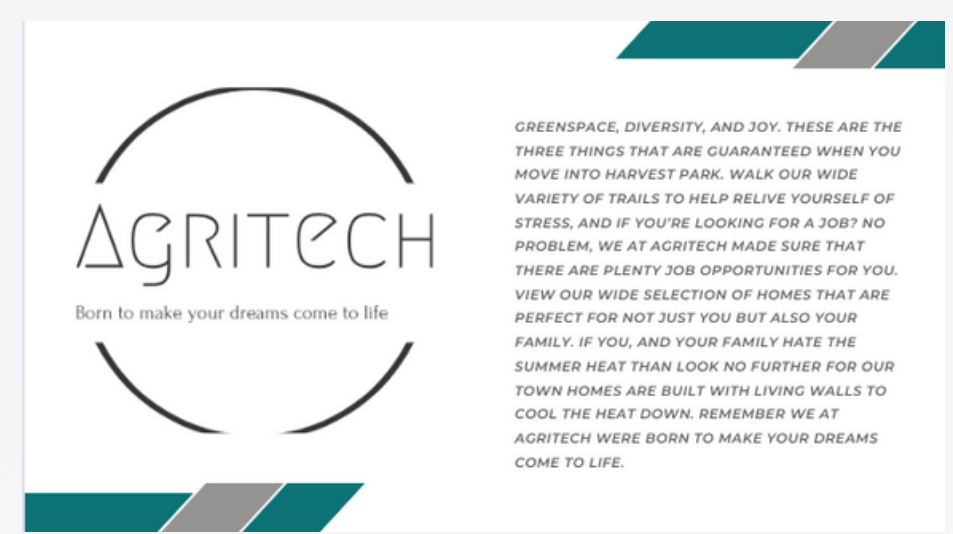
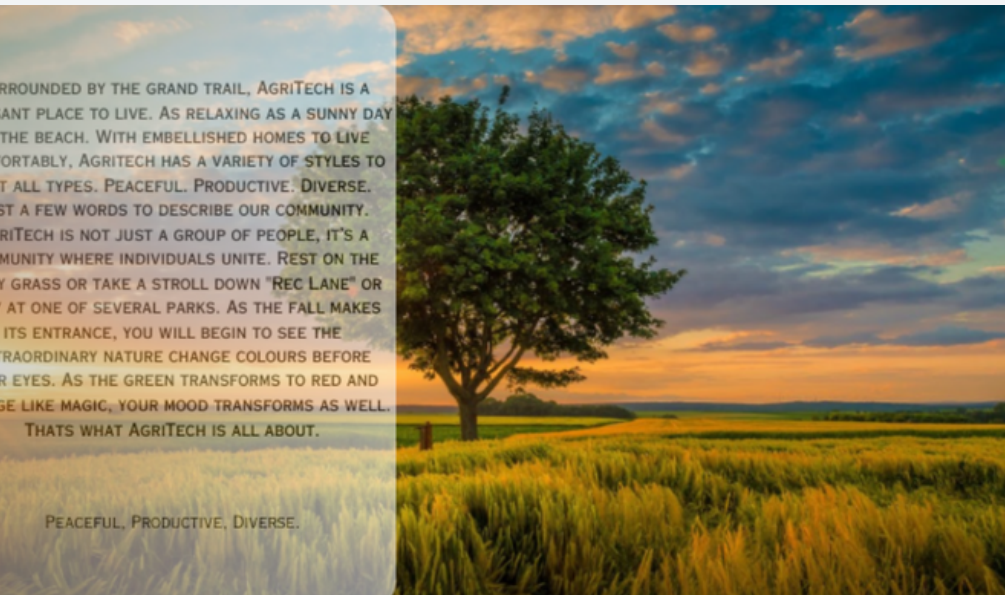
# INNOVATION

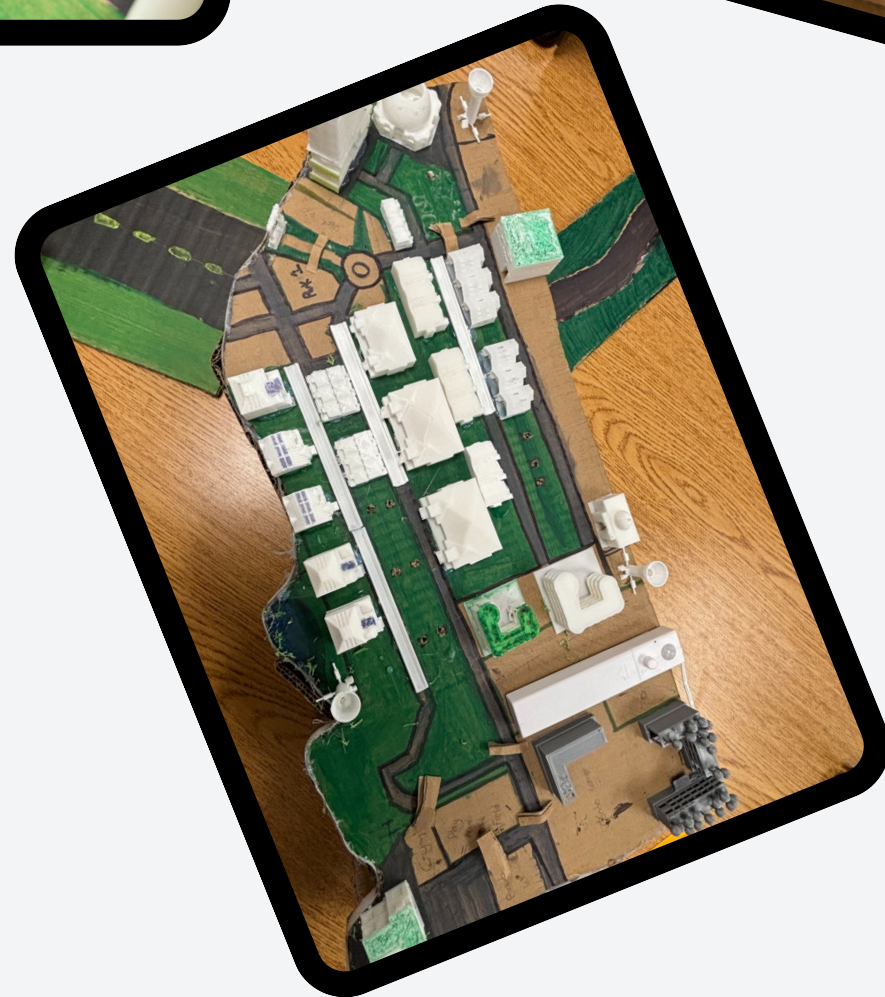
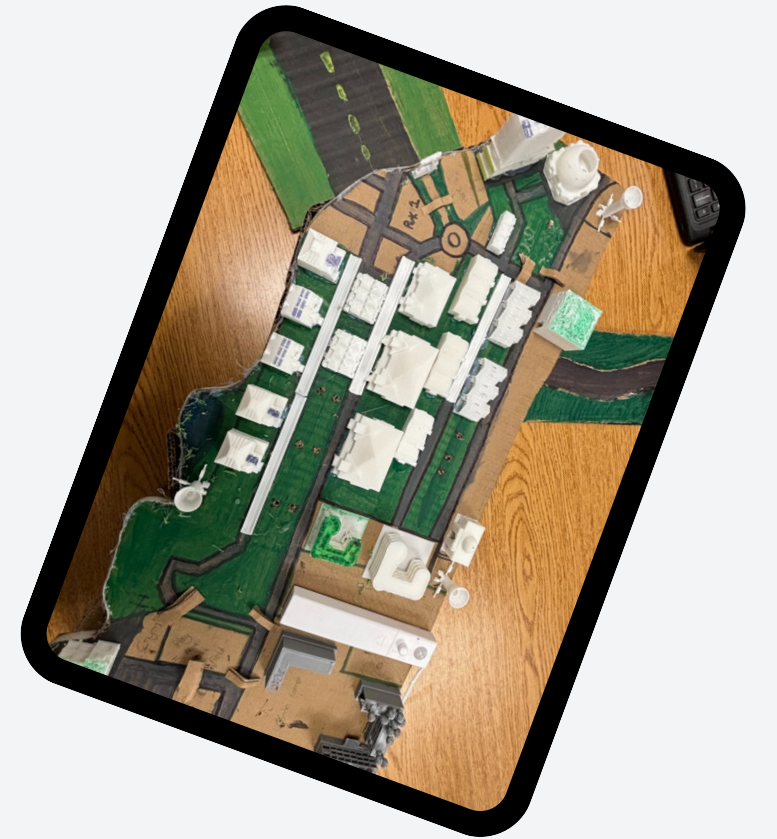
Agritech is full of innovative ideas such as...



@AGRITECH

# MARKETING & BRANDING

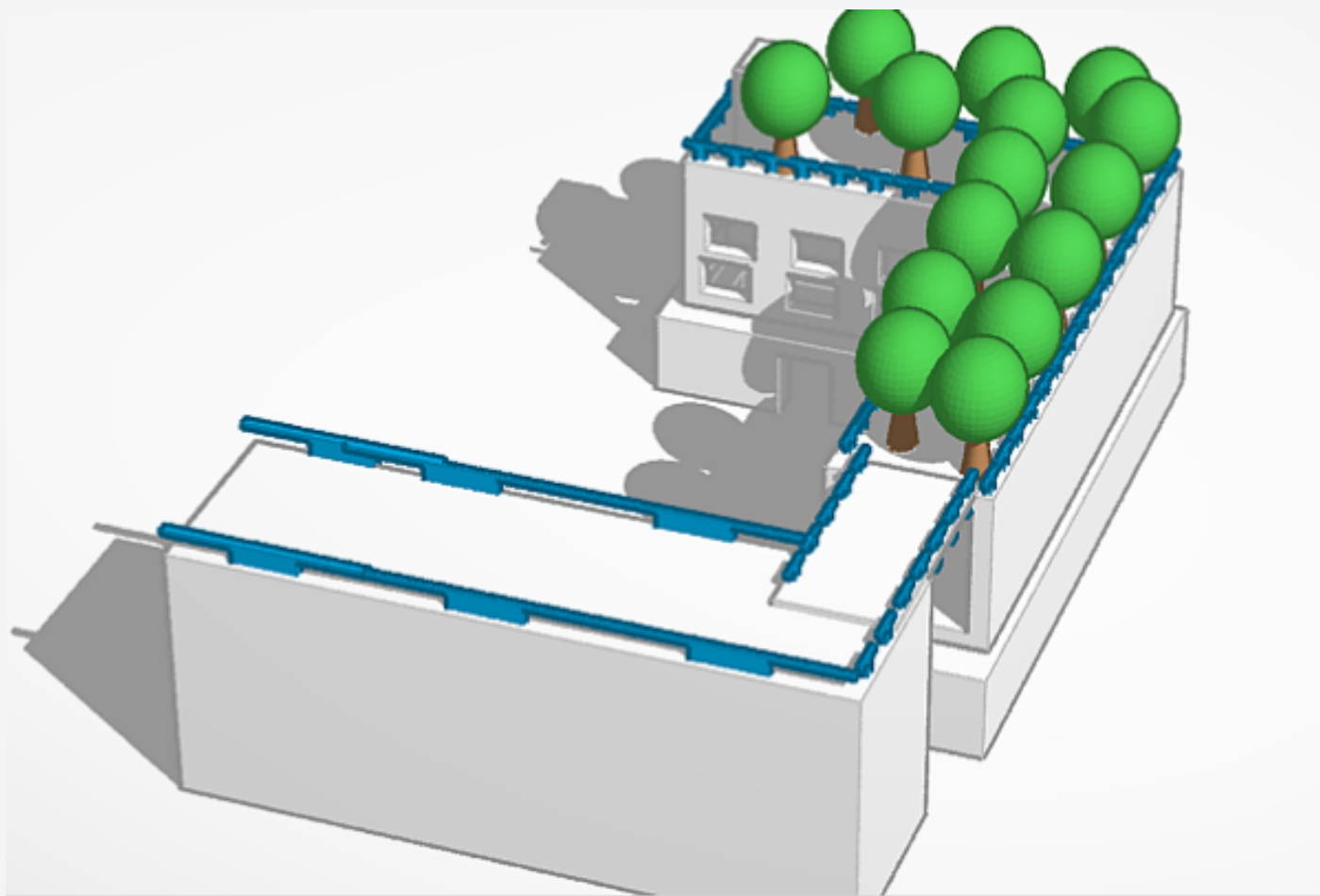




@AGRITECH

# DESIGNS

# CONDO CORNER



## WHAT IS CONDO CORNER?

- Series of condo building that have a green roof
- They are all connected by a glass bridge

### WHY IS IT IMPORTANT?

- Good for the environment (more purvious)
- Good for mental health
- Innovative
- Looks nice

### OTHER FEATURES

- About 200 condo apartments together
- About 600 residents.
- Trails at the bottom of buildings leading to a park

@AGRITECH



## AGRITECH & CO. COMPANY



### PREMIUM MATERIALS

Our House - Philip, is built with very reliable, secure, and premium material. Ensured to keep you and your loved ones happy and safe. All of our homes including Philip promote sustainability. So all of these materials are made of other recycled materials to make concrete, stone, and brick.



### ENERGY EFFICIENT

Our house Philip has a lot of sustainable features. Such as; Solar Panels, Water Catchers, Eco - Materials, and many more. Philip consists of 4 solar panels located on the top of the house. It also has many water catchers built into the roof to absorb all sorts of water and provide it to the house.



### THE LOCATION

We believe our community can give you all of our necessities and more. Agritech is near one of the best schools in the WRDSB, and has one their own. We are near the 401 and many recreational sites. Agritech also has many restaurants and stores for you to enjoy



+123 - 456 - 7890

## ABOUT US

Welcome to Agritech, where extraordinary living meets unparalleled community! Nestled in the heart of Kitchener, our carefully crafted community promises an exceptional lifestyle designed to elevate your everyday experiences.

### BORN TO MAKE YOUR DREAM COME TO LIFE

Explore a collection of architecturally stunning homes, meticulously designed to seamlessly blend contemporary aesthetics with functional living spaces. From cozy apartments to spacious family homes, Agritech offers a range of housing options to suit your unique preferences.



### Service Hub

Our customer service area makes it easy to connect with customers and help them succeed.



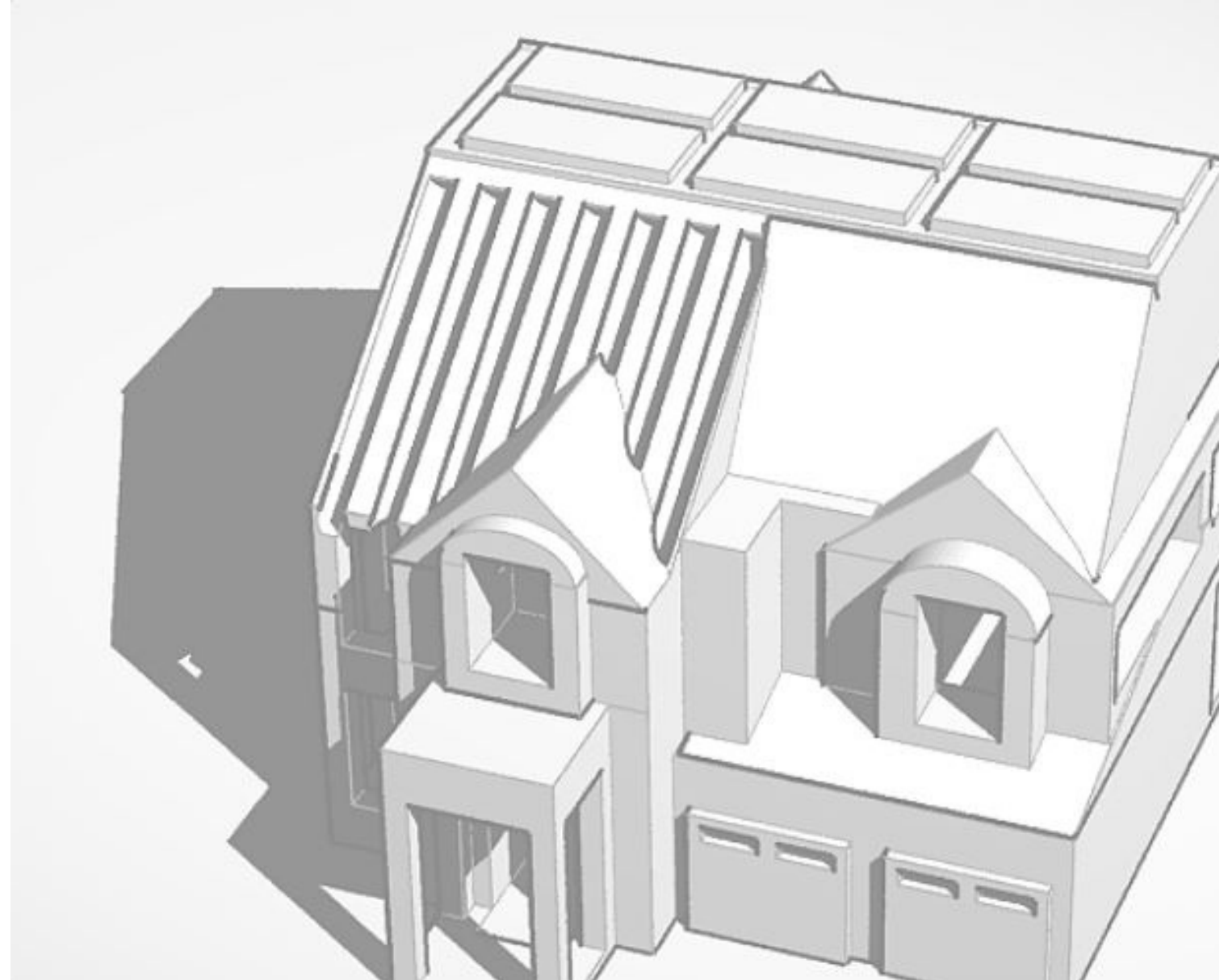
### Sales Hub

Our sales software includes a full suite of tools to boost sales productivity.



### Operation Hub

Our operations hub lets you sync and curate customer data.



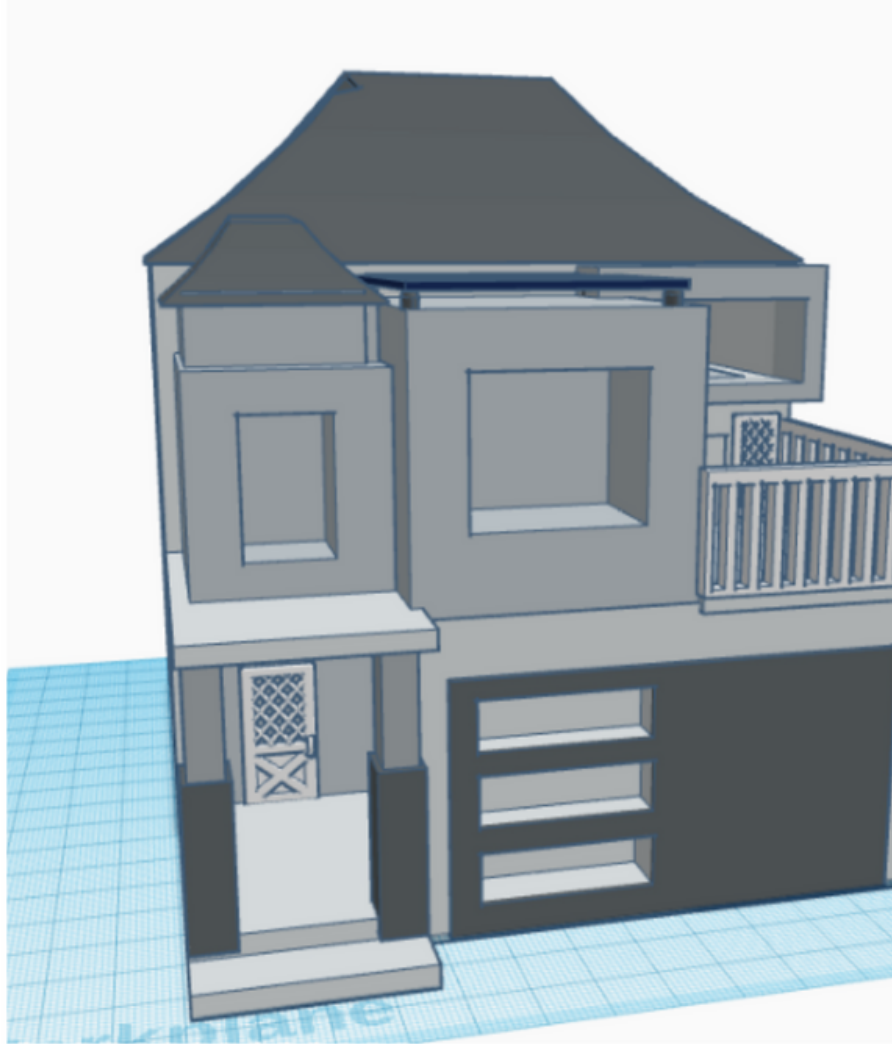
# Single Detached

This house isn't just a sight for sore eyes—it's loaded with some fantastic features. To begin with, it's constructed using top-notch materials. Sure, it might seem a bit pricey, but we've managed to find a way to produce these materials at a lower cost. We're talking about using recycled materials to make bricks, concrete, and even stone. So, it's not just a fancy house; it's also environmentally friendly. Now, let me tell you about the roof—it's not your average roof. It comes with a built-in rain-catching and drainage system. When it rains or snows, the roof absorbs all that water. It then travels through some pipes, hits a filtration system, and ends up in a main tank. From there, it gets pumped throughout the house, ready for use. It's like having a high-tech water distribution system on your roof. But wait, there's more! The windows in this place are massive, strategically designed to let in as much natural light as possible. This not only reduces the need for electricity but also provides ample space for putting some cool plants. No more moving plants around every hour—these windows got you covered. And of course, we've got solar panels. It's a common eco-friendly feature, but here's the twist—we've placed them in spots where they're not so obvious. People often find solar panels unsightly, so we decided to tuck them away in places where they won't be a sore spot. It's all about sustainability without sacrificing the aesthetics.



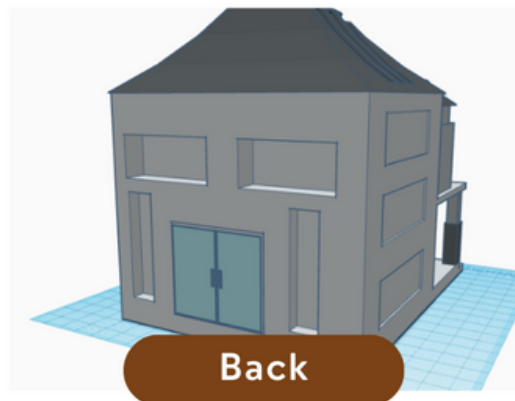
@AGRITECH

# MODERN SINGLE DETACHED



## FEATURES

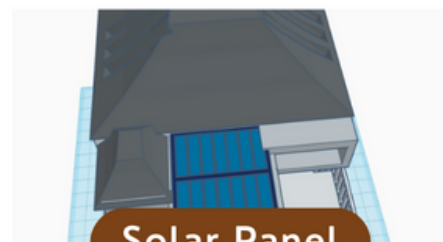
- ✓ 4 Bedrooms
- ✓ 3.5 Bathrooms
- ✓ Phone controlled
- ✓ Net Zero
- ✓ Plenty Windows
- ✓ Balcony
- ✓ Solar Panel
- ✓ Double Garage



Back



Side



Solar Panel

*"Born to make  
your dreams  
come true"*

### About The Property

A big, but sustainable home to live in. With plenty of windows, you never need the light, and when it's night, the solar panel on the roof will provide you with all the electricity you need. It has 4 bedrooms and 3.5 bathrooms.

# SINGLE DETACHED

# TOWN HOUSES



Price: 500,000

## TOWN HOUSE FOR SALE.



### Living Walls

I added living walls to my town home because they can provide fresh air, reduce stress, and improve biodiversity. Living walls can also add thermal mass to the building, and can also remove air pollutants.



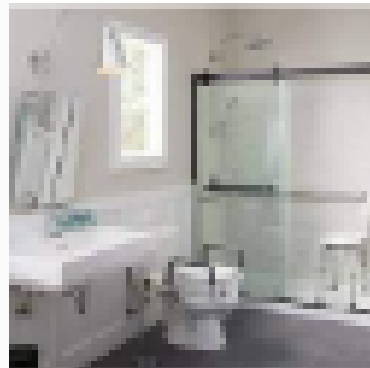
### Energy Efficient windows

Energy Efficient Windows can help lower HVAC cost. These Windows can also provide increased lighting in your home. These windows can also provide transmission of natural light while limiting heat.



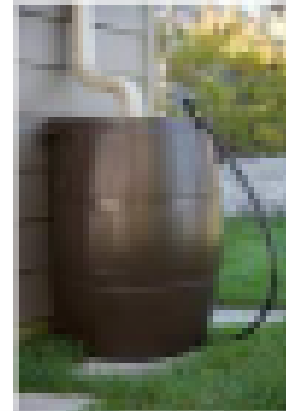
### Solar Panels

Like all of the homes I am designing this town home is a net zero home in order to make this town home sustainable, and since this home is not very fancy, I think this should be more affordable now that I removed a lot of fancy features.



### Wheelchair accessible bathrooms

I made sure that every house I make has one bathroom that can be used by someone in a wheelchair either because of an injury or because of a disability because they need to go as well.



### Rain Catcher

Another feature I added is a rain water catcher to provide free water if for some reason the water stops, and to also lower water bills.

# SCHOOLS

@AGRITECH

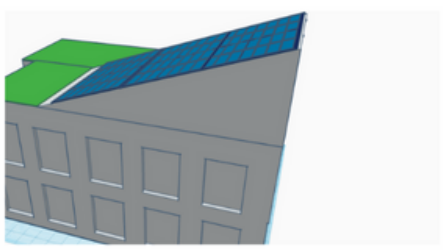
## school

### PRINTING TICKET



### FEATURES

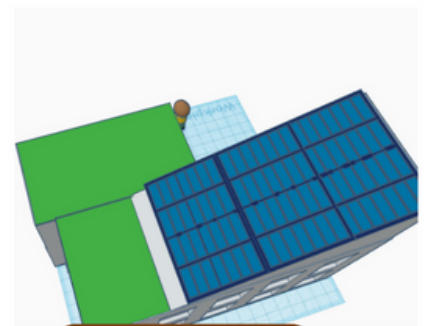
- ✓ Green Roof
- ✓ Net Zero
- ✓ Parking
- ✓ Open Field
- ✓ Big Windows
- ✓ Solar Panels
- ✓ Eco-Friendly



Back



Roof



Solar Panel

### About The Scool

Eco-Friendly school with solar panels which means, no electricity needed.

*"Born to make  
your dreams  
come to life"*

@AGRITECH

**THANKS FOR  
LISTENING!**

**ANY QUESTIONS?**



**AGRITECH,  
CO.**