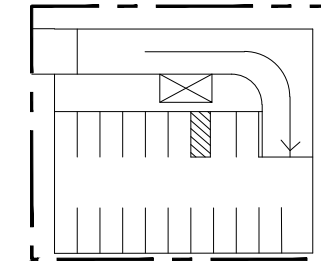
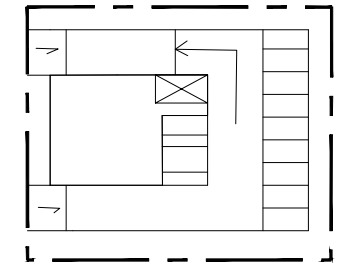


SITE AREA: 1,343m<sup>2</sup>      PARKING: 58 spaces  
 UNITS: 140 units      (0.41 spaces/unit)  
 DENSITY: 1,042 upha  
 GFA: 16,940m<sup>2</sup>  
 FSR: 12.61  
 HEIGHT: 25 storeys  
 MIN. TOWER SEPARATION: N/A

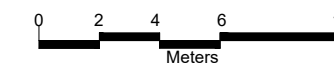
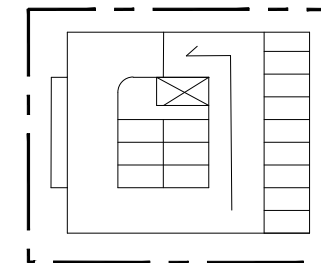
UNDERGROUND PARKING:  
 18 spaces



L1 PODIUM:  
 10 spaces



L2 - L4 PODIUM:  
 30 spaces



NOTE: This concept should be considered as a preliminary demonstration model that illustrates an 'order of magnitude' development scenario for the site. The number of units, floor area and parking supply are approximate and subject to more detailed design as well as municipal planning approvals.

Scale 1:250 | December 20, 2023 | Project No. 23256 | Drawn By: MN



# DEVELOPMENT CONCEPT

49 - 55 Pine Street, Kitchener