

680

FREDERICK STREET

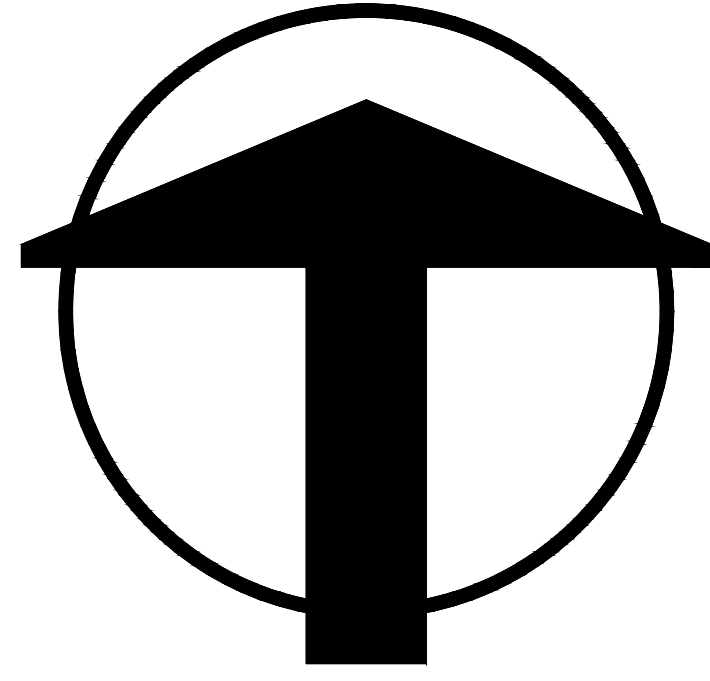


REVISED DESIGN SET: 02/21/2024

SEMI-DUPLEX DESIGN PROPOSAL

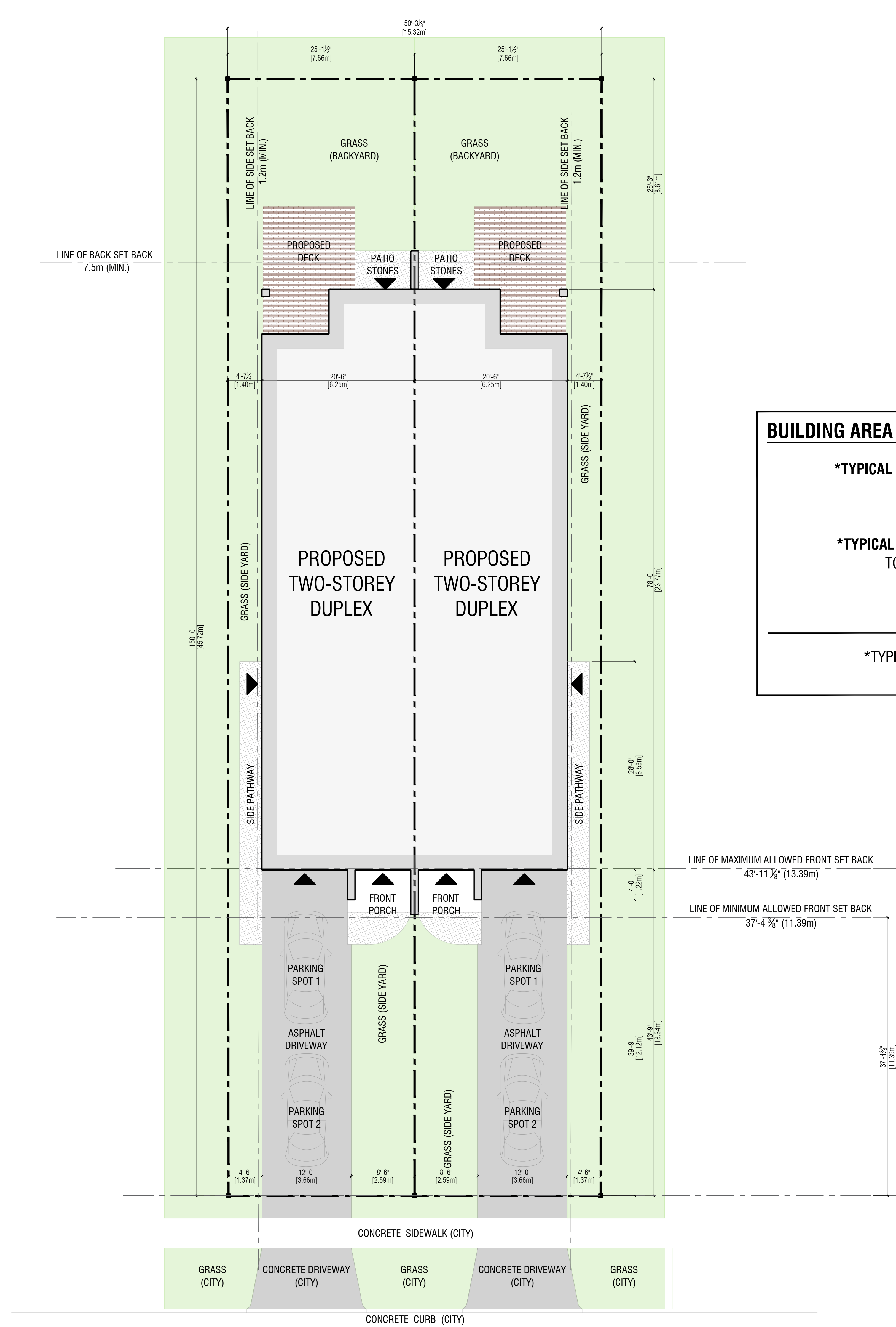
HOME OWNER: CALIN PELE

PROJECT NORTH:



680

FREDERICK STREET



BUILDING AREA SUMMARY:

*TYPICAL UNIT A - GROUND FLOOR	=	1,116 SQ.FT.	(103.7 SQ.M.)
BASEMENT	=	1,173 SQ.FT.	(109.0 SQ.M.)
TOTAL MAIN UNIT AREA	=	2,289 SQ.FT.	(212.7 SQ.M.)
*TYPICAL UNIT B - SECOND FLOOR	=	1,545 SQ.FT.	(143.5 SQ.M.)
TOTAL SECOND UNIT AREA	=	1,545 SQ.FT.	(143.5 SQ.M.)
COMMON AREA - FOYER	=	94 SQ.FT.	(8.7 SQ.M.)

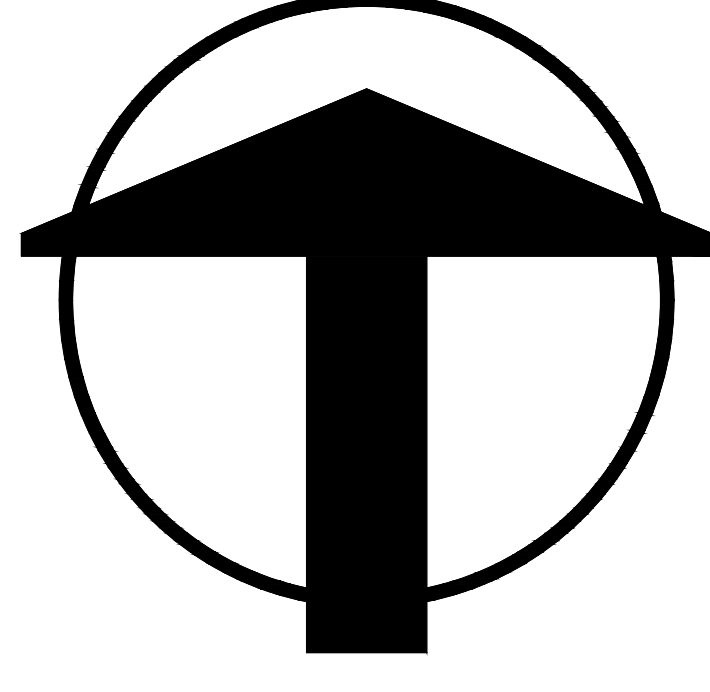
*TYPICAL TOTAL GROSS AREA = **3,928 SQ.FT.** (364.9 SQ.M.)
(WITH BASEMENT)

*TYPICAL AREAS, MEANING SAME AREA PER SEMI.

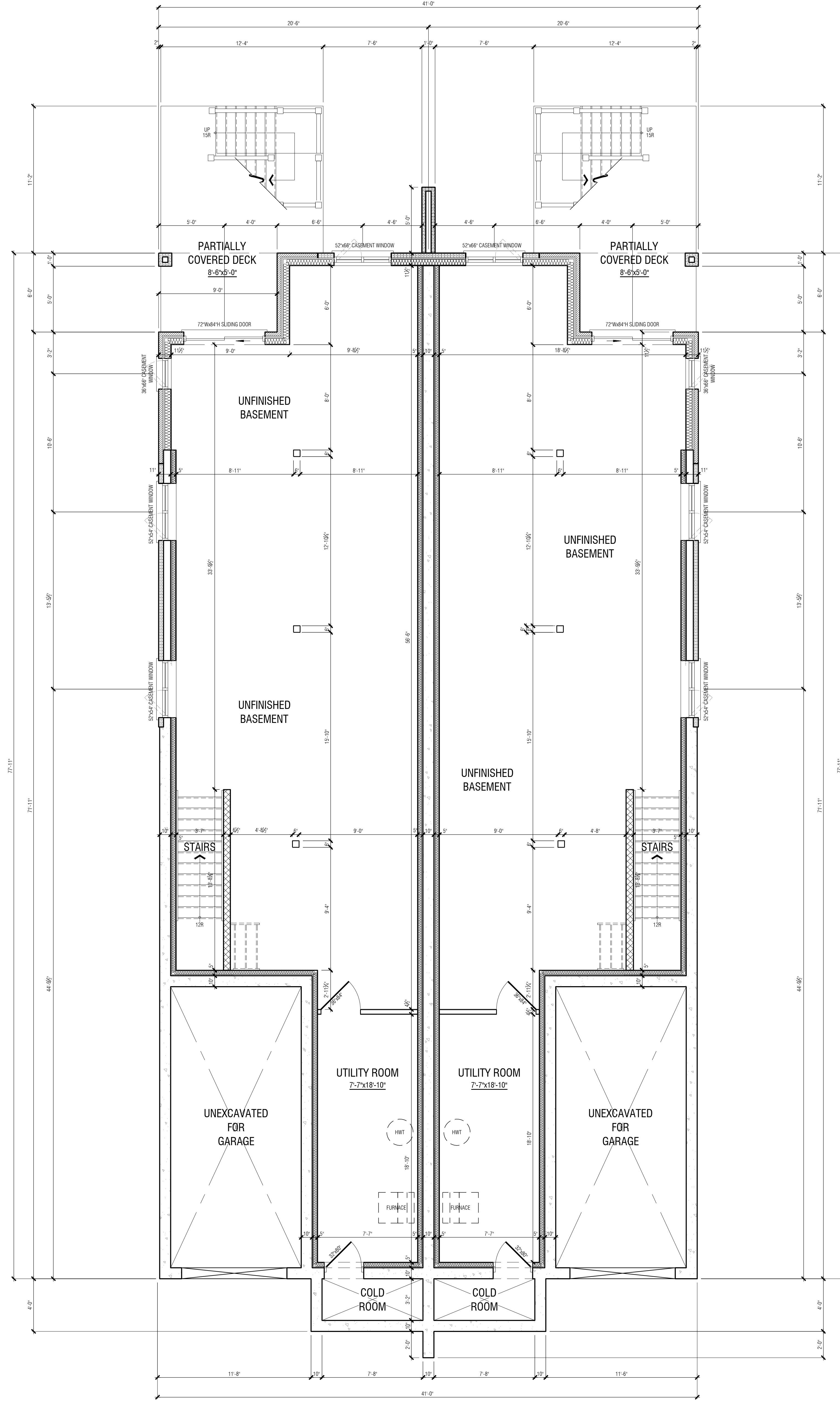
FREDERICK STREET

SITE PLAN

PROJECT NORTH:



SCALE: 1/4" = 1'-0"

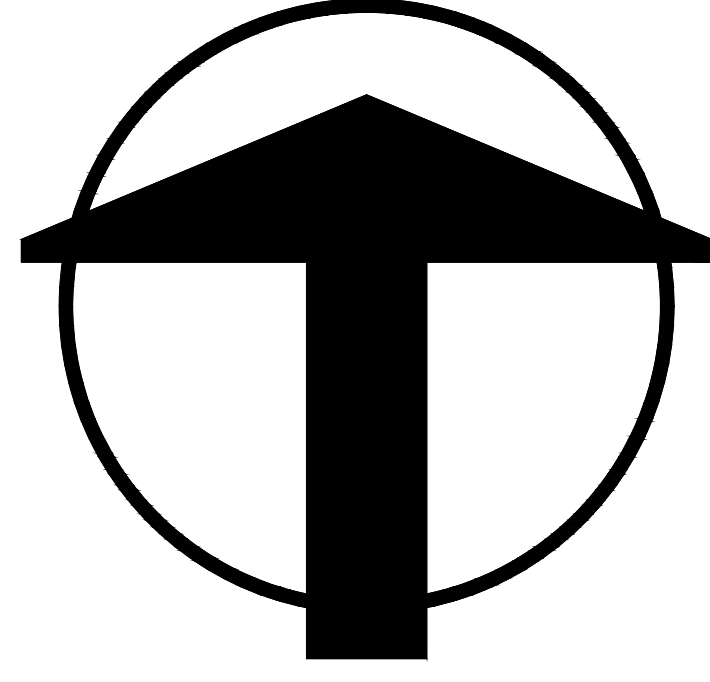


680

FREDERICK STREET

BASEMENT FLOOR PLAN - UNIT 'B'

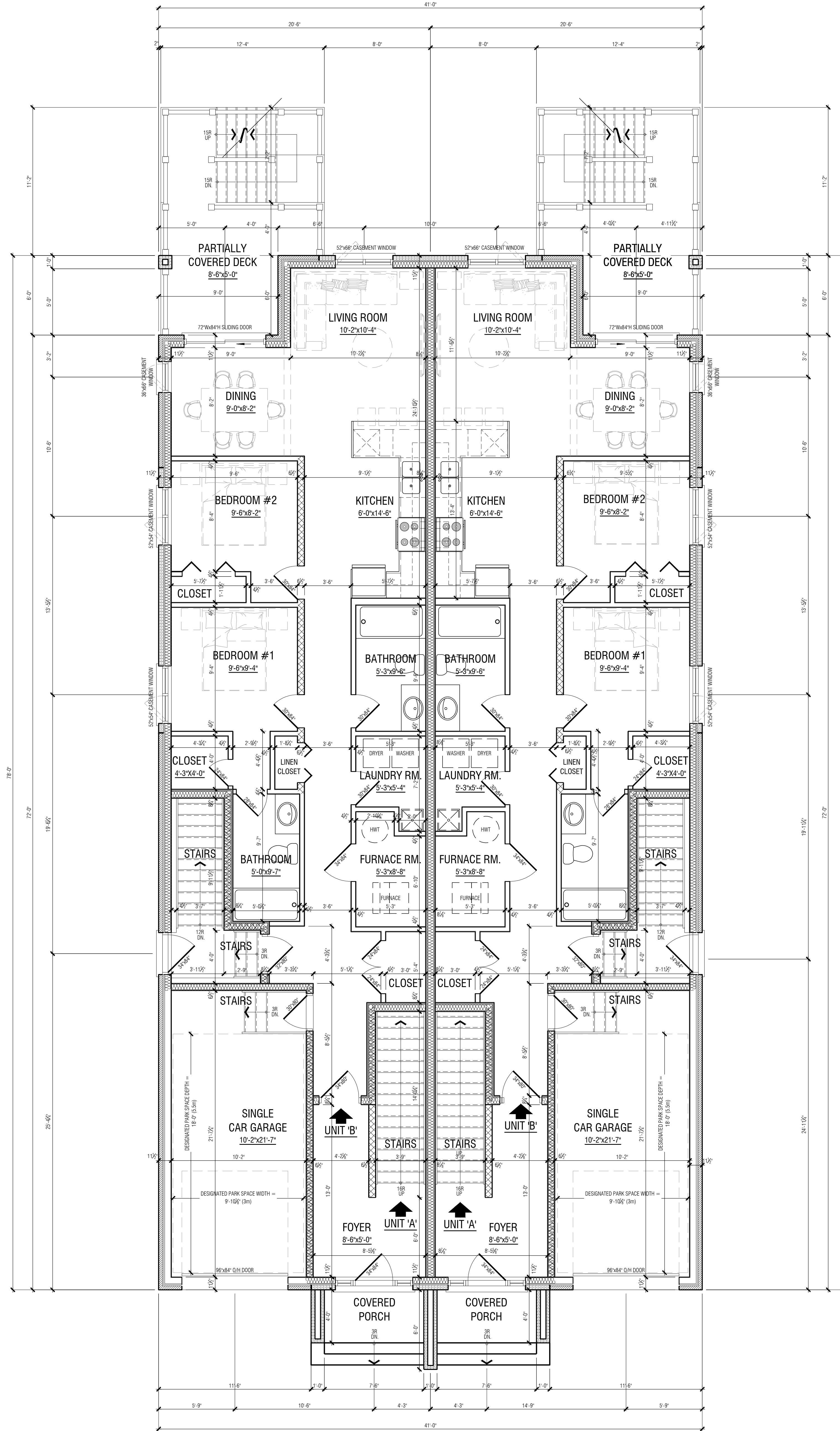
PROJECT NORTH:



680

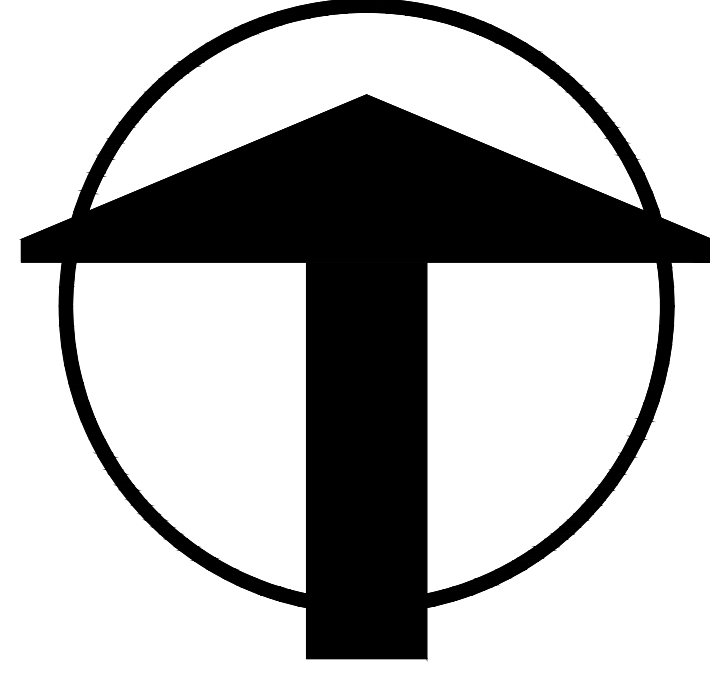
FREDERICK STREET

SCALE: 1/4" = 1'-0"



GROUND FLOOR PLAN - UNIT 'B'

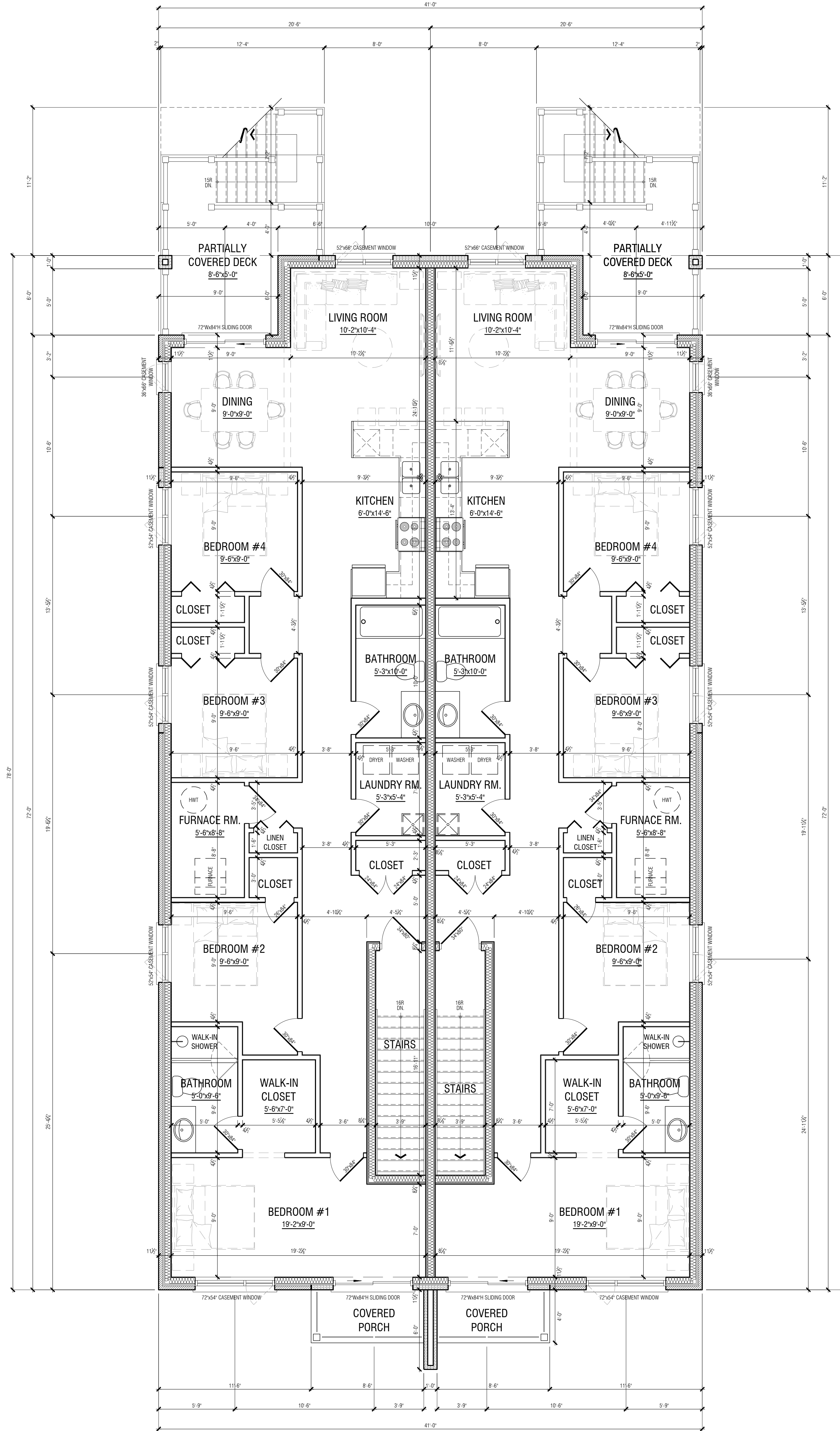
PROJECT NORTH:



680

FREDERICK STREET

SCALE: 1/4" = 1'-0"



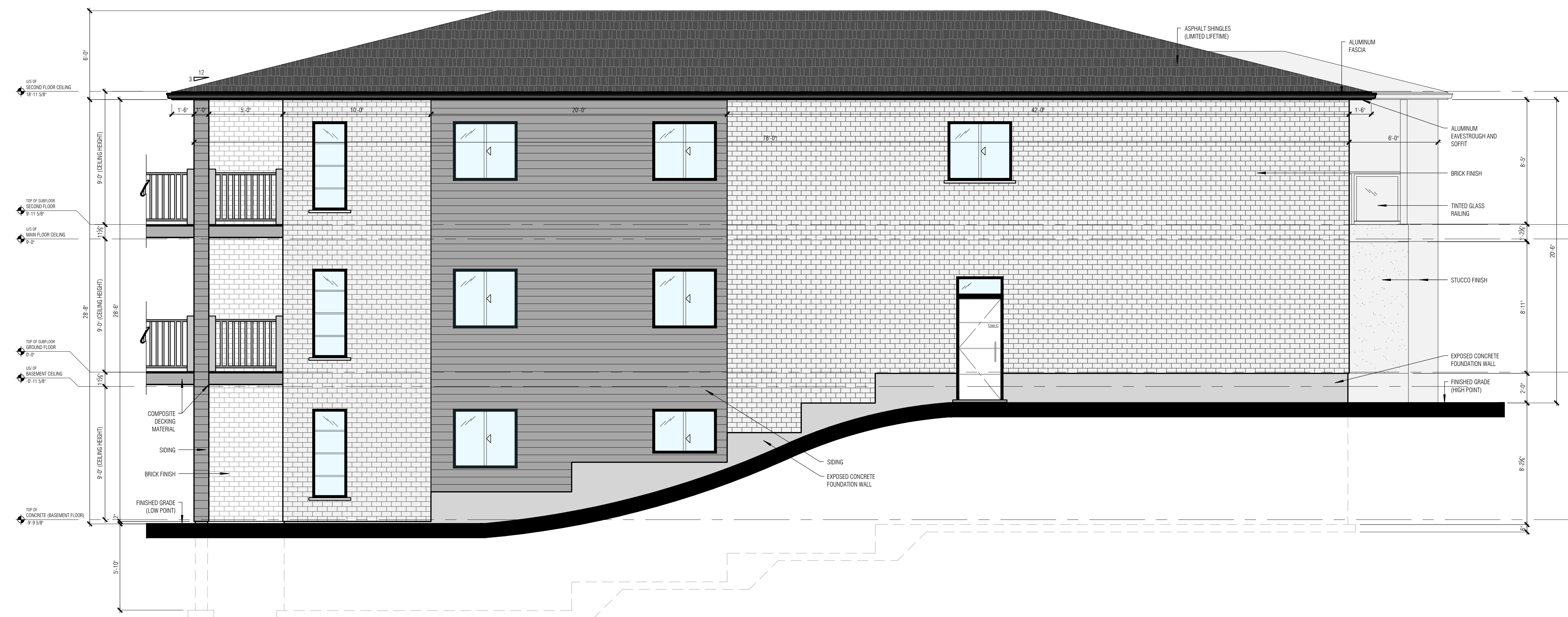
SECOND FLOOR PLAN - UNIT 'A'

680

FREDERICK STREET



NORTH ELEVATION



EAST ELEVATION

SCALE: 1/4" = 1'-0"

EXTERIOR ELEVATIONS

680

FREDERICK STREET



SOUTH ELEVATION



WEST ELEVATION

SCALE: 1/4" = 1'-0"

EXTERIOR ELEVATIONS