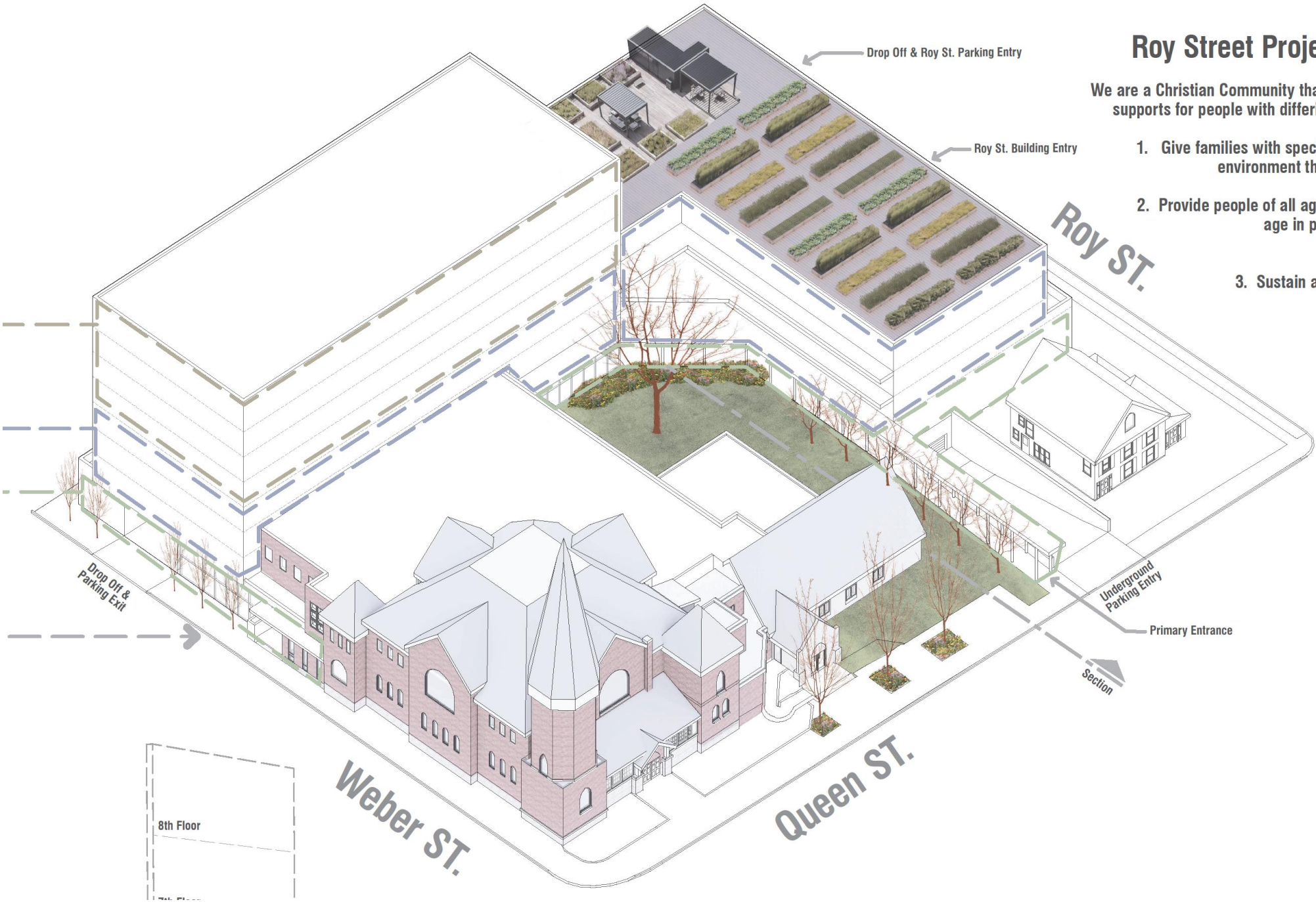
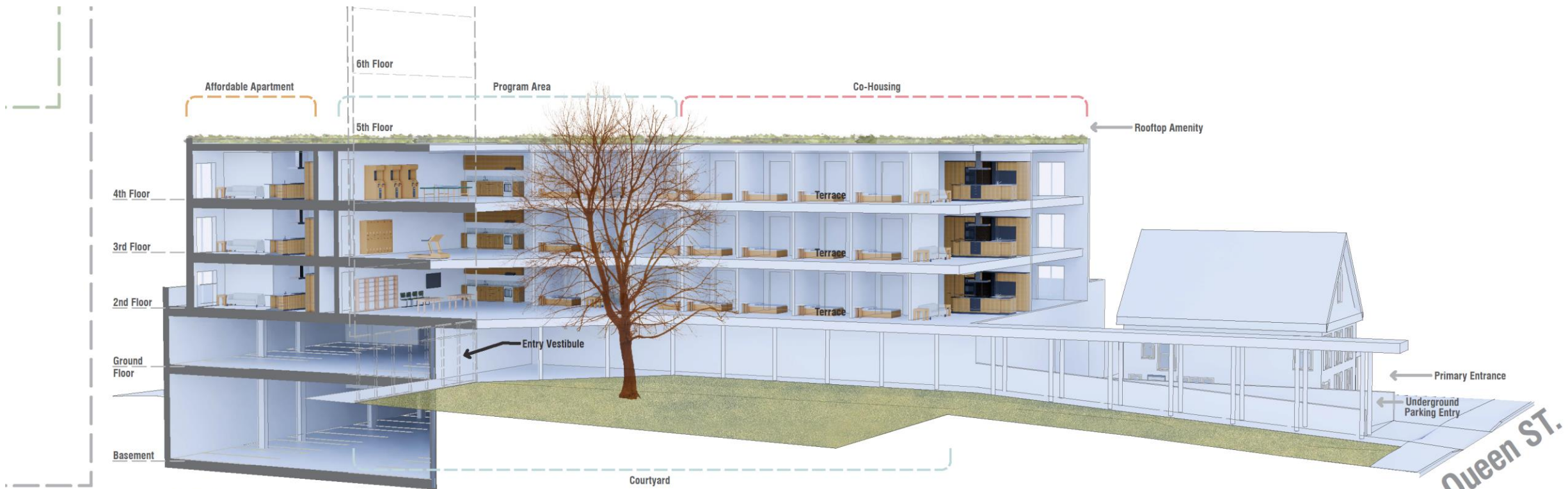


Roy Street Project Mission Statement

We are a Christian Community that is creating housing with a variety of supports for people with differing abilities. In this place we hope to:

- 1. Give families with special challenges greater autonomy in an environment that fosters positive human connection.
- 2. Provide people of all ages a setting to develop as individuals, age in place, and grow in a community where everyone feels a sense of belonging.
- 3. Sustain an affordable, safe, and uplifting living experience for residents and visitors.





SECTION

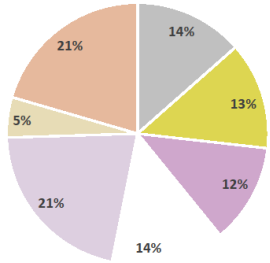


St. Andrew's Presbyterian Church

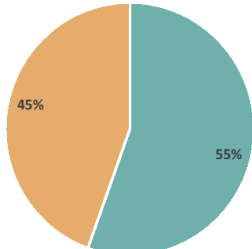
Intentional Community of Roy Street



GROUND FLOOR PLAN



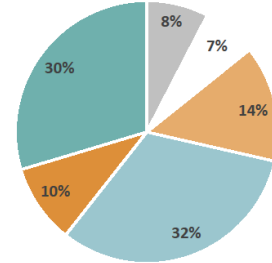
Room Area Distribution



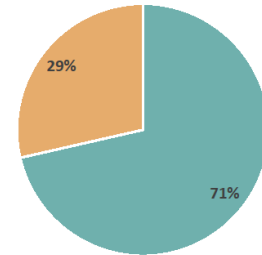
Room Area Distribution - Whole Building



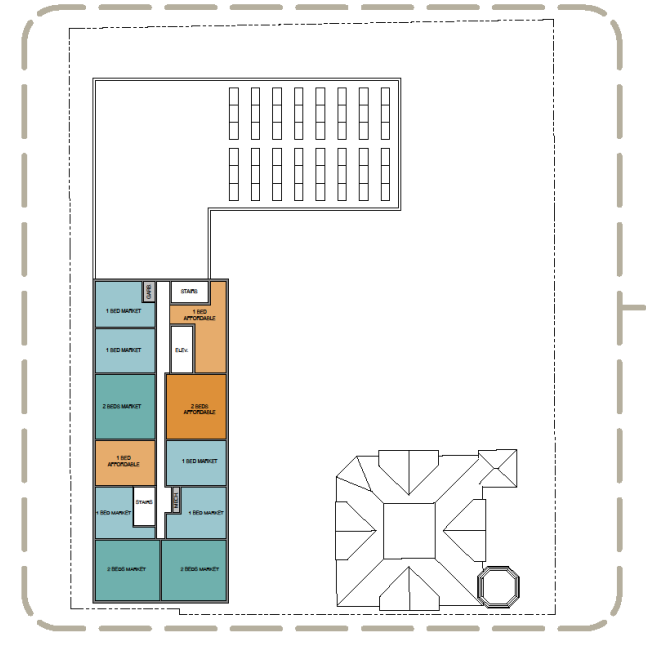
5th to 8th FLOOR PLAN



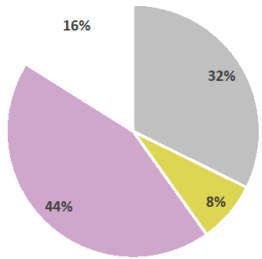
Room Area Distribution



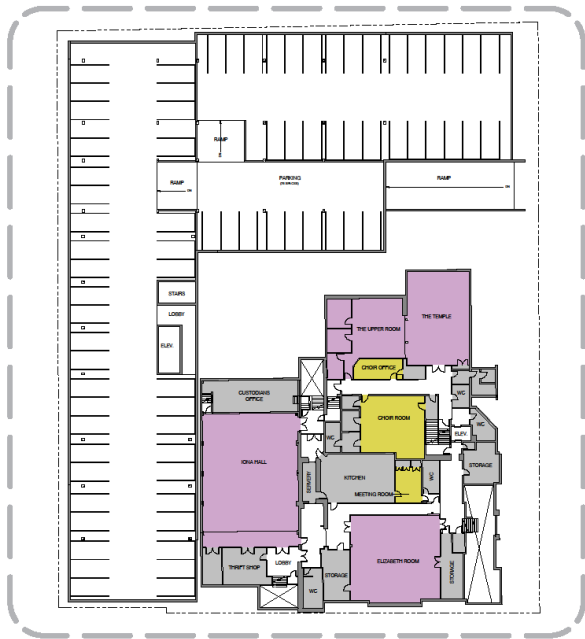
Room Area Distribution



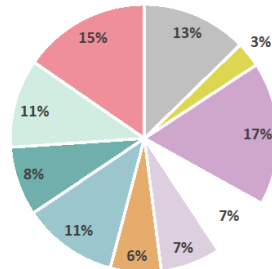
BASEMENT FLOOR PLAN



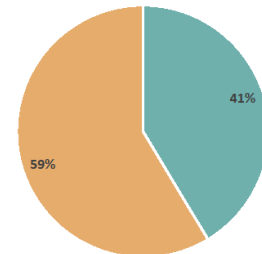
Room Area Distribution



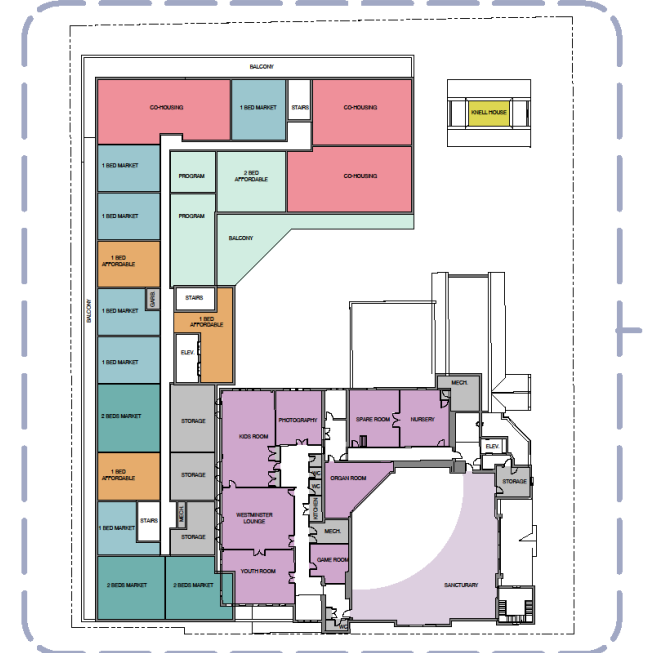
2nd to 4th FLOOR PLAN



Room Area Distribution



Room Area Distribution



Legend

- Service
- Administration
- Amenity
- Corridor
- Lobby
- Parking
- Worship
- Commercial
- Townhouse
- 1 Bed Affordable
- 2 Bed Affordable
- 1 Bed Market
- 2 Bed Market
- Program
- Co-housing