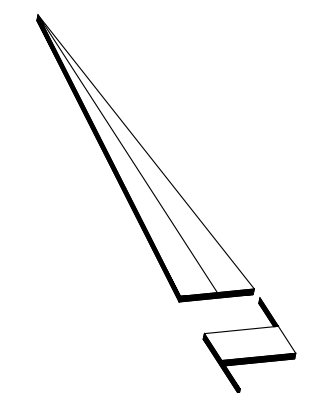


PLAN SHOWING
PARTS AT
ELEVATION 326.0



LOCATION OF PARTS								SCHEDULE					
SECTIONS	SHEET	PART						PART	LOT	PLAN	PIN		
AT ELEV. 326.0	1	1	2	3	4	5	6	7	8	PART OF LOTS 16 OR 15 (HUEGLIN), 17 (B. MOOGK) & 18 SOUTH SIDE OF KING STREET	364		
AT ELEV. 326.0 (DETAIL)	2	•	•	•	•	•	•	•	•		PART OF LOT 19 SOUTH SIDE OF KING STREET	365	
AT ELEV. 328.3	3	•	•	•	•	•	•	•	•			PART OF LOTS 17 (B. MOOGK) & 18 SOUTH SIDE OF KING STREET	364
AT ELEV. 330.00 (DETAIL)	4	•	•	•	•	•	•	•	•				PART OF LOTS 17 (B. MOOGK) & 18 SOUTH SIDE OF KING STREET
AT ELEV. 330.00	5	•	•	•	•	•	•	•	•		PART OF LOT 19 SOUTH SIDE OF KING STREET		
AT ELEV. 333.00 (DETAIL)	6	•	•	•	•	•	•	•	•			PART OF LOT 19 SOUTH SIDE OF KING STREET	
AT ELEV. 333.00	7	•	•	•	•	•	•	•	•				PART OF LOT 19 SOUTH SIDE OF KING STREET
AT ELEV. 335.00 (DETAIL)	8	•	•	•	•	•	•	•	•		PART OF LOT 19 SOUTH SIDE OF KING STREET		
AT ELEV. 335.00	9	•	•	•	•	•	•	•	•			PART OF LOT 19 SOUTH SIDE OF KING STREET	
AT ELEV. 335.00 (DETAIL)	10	•	•	•	•	•	•	•	•				PART OF LOT 19 SOUTH SIDE OF KING STREET
A-A	11	•	•	•	•	•	•	•	•	PART OF LOT 19 SOUTH SIDE OF KING STREET	365		
B-B		•	•	•	•	•	•	•	•				
C-C		•	•	•	•	•	•	•	•				
1-1		•	•	•	•	•	•	•	•				
2-2		•	•	•	•	•	•	•	•				
3-3		•	•	•	•	•	•	•	•				
4-4	12	•	•	•	•	•	•	•	•	PART OF LOTS 16 OR 15 (HUEGLIN), 17 (B. MOOGK) & 18 SOUTH SIDE OF KING STREET	364		
5-5		•	•	•	•	•	•	•	•				
6-6		•	•	•	•	•	•	•	•				
SECTIONS TO SHOW VERTICAL EXTENT OF PARTS		•	•	•	•	•	•	•	•				

PLAN 58R-22006
Received and deposited
April 2nd, 2024
Vanessa Dias
Representative for the
Land Registrar for the
Land Titles Division of
Waterloo (No.58)

STRATA PLAN OF SURVEY OF
PART OF LOTS 16 OR 15 (HUEGLIN) &
PART OF LOTS 17 (B. MOOGK) & 18
SOUTH SIDE OF KING STREET
REGISTERED PLAN 364
AND
PART OF LOT 19
SOUTH SIDE OF KING STREET
REGISTERED PLAN 365
CITY OF KITCHENER
REGIONAL MUNICIPALITY OF WATERLOO

SCALE 1 : 200
VAN HARTEN SURVEYING INC.

THE INTENDED PLOT SIZE OF THIS PLAN IS 914 mm IN WIDTH BY 610 mm IN HEIGHT WHEN PLOTTED AT A SCALE OF 1:200

- BEARING AND COORDINATE NOTE:**
- BEARINGS ARE GRID BEARINGS AND ARE DERIVED FROM GPS OBSERVATIONS AND ARE REFERRED TO THE UTM PROJECTION, ZONE 17, NAD 83 (CSRS-2010) ADJUSTMENT.
 - DISTANCES SHOWN ON THIS PLAN ARE ADJUSTED GROUND DISTANCES AND CAN BE CONVERTED TO GRID DISTANCES BY MULTIPLYING BY AN AVERAGED COMBINED SCALE FACTOR OF 0.999975.
 - COORDINATES ON THIS PLAN ARE UTM, ZONE 17, NAD83 (CSRS-2010) ADJUSTMENT AND ARE BASED ON GPS OBSERVATIONS FROM A NETWORK OF PERMANENT GPS REFERENCE STATIONS.

UTM COORDINATES (METRES)

POINT ID	NORTHING	EASTING
A	4810601.29	541804.51
B	4810546.57	541889.32
C	4810530.53	541789.86

THESE COORDINATE VALUES COMPLY WITH SECTION 14(2) O.R.G. REG 216/10. THESE COORDINATES CANNOT, IN THEMSELVES, BE USED TO RE-ESTABLISH THE CORNERS OR BOUNDARIES SHOWN ON THIS PLAN.

BENCHMARK REFERENCE:
ELEVATIONS ARE BASED ON GPS OBSERVATIONS FROM PERMANENT REFERENCE STATIONS IN THE NAD83 (CSRS-2010) COORDINATE SYSTEM, WITH HEIGHT CONVERTED TO ORTHOMETRIC ELEVATIONS ON THE CGVD28 DATUM (1978 ADJUSTMENT) WITH GEOID MODEL HTV2.0, AS SUPPLIED BY NATURAL RESOURCES CANADA.
TEMPORARY SITE BENCHMARK:
TBM #1: CUT CROSS ON CURB AT THE CORNER OF CEDAR STREET AND MADISON AVENUE, NORTH OF THE SUBJECT PROPERTY, HAVING AN ELEVATION OF 330.08 METRES.
TBM #2: CUT CROSS ON CURB ALONG THE EAST SIDE OF MADISON AVENUE, EAST OF THE SUBJECT PROPERTY, HAVING AN ELEVATION OF 326.76 METRES.

METRIC:
DISTANCES AND COORDINATES SHOWN ON THIS PLAN ARE IN METRES AND CAN BE CONVERTED TO FEET BY DIVIDING BY 0.3048.

SURVEYOR'S CERTIFICATE
I CERTIFY THAT:
1. THE STRUCTURES SHOWN ON THIS PLAN COMPRISING OF SHEETS 1 TO 12 ARE IN EXISTENCE.
2. THE DIMENSIONS SHOWN ON THIS PLAN HAVE BEEN VERIFIED BY ACTUAL MEASUREMENTS.
DATE: MARCH 25, 2024 **JEFFREY EDWARD BUISMAN**
ONTARIO LAND SURVEYOR

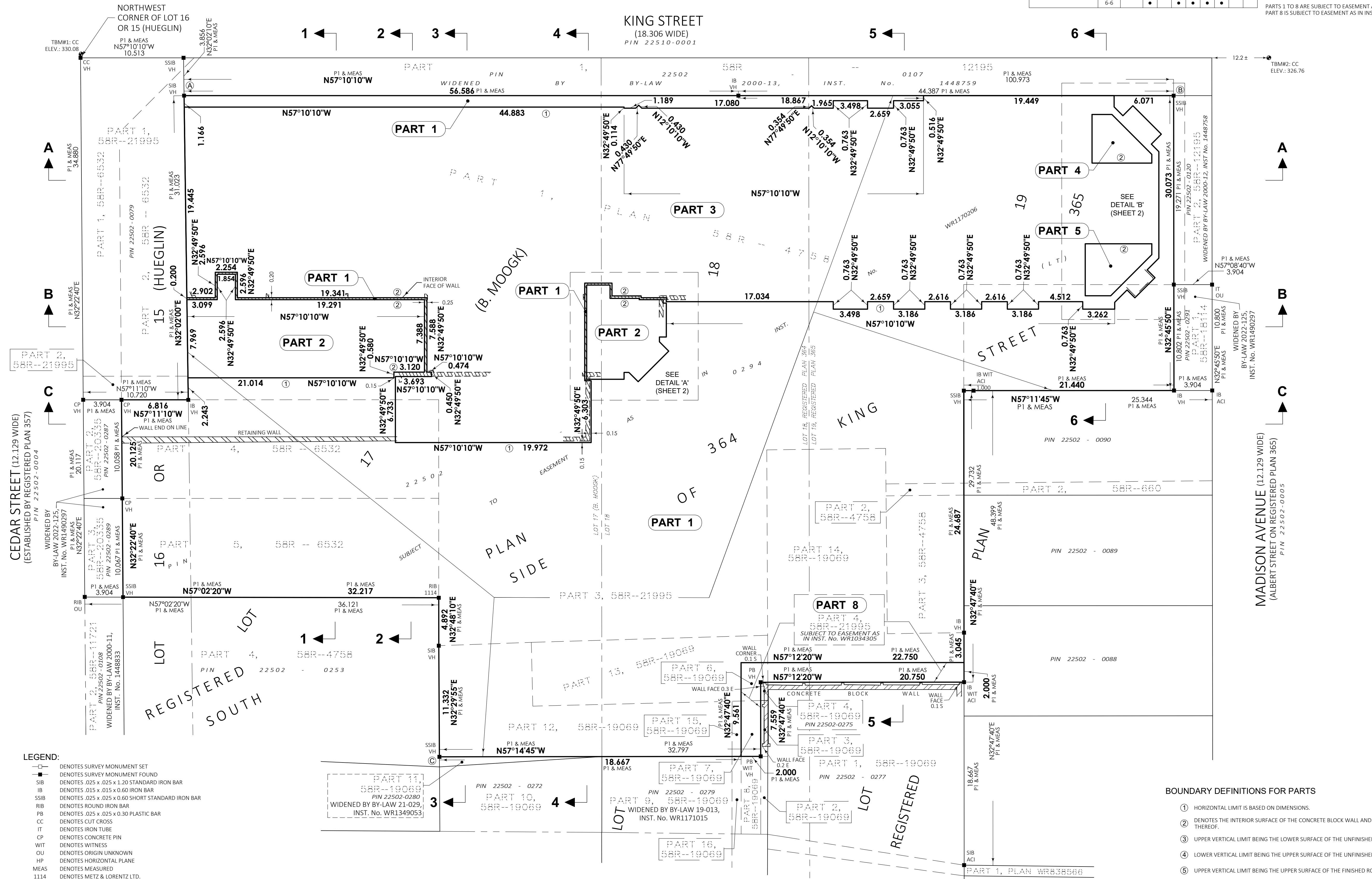
SURVEYOR'S CERTIFICATE
I CERTIFY THAT:
1. THIS SURVEY AND PLAN COMPRISING OF SHEETS 1 TO 12 ARE CORRECT AND IN ACCORDANCE WITH THE SURVEYS ACT, THE SURVEYORS ACT, THE LAND TITLES ACT AND THE REGULATIONS MADE UNDER THEM.
2. THIS SURVEY WAS COMPLETED ON THE 27th DAY OF NOVEMBER, 2023.
DATE: MARCH 25, 2024 **JEFFREY EDWARD BUISMAN**
ONTARIO LAND SURVEYOR

THIS PLAN OF SURVEY RELATES TO AOLS PLAN SUBMISSION FORM NUMBER 2213679.



Kitchener/Waterloo Ph: 519-742-8371 Guelph Ph: 519-821-2763 Orangeville Ph: 519-940-4110
www.vanharten.com info@vanharten.com

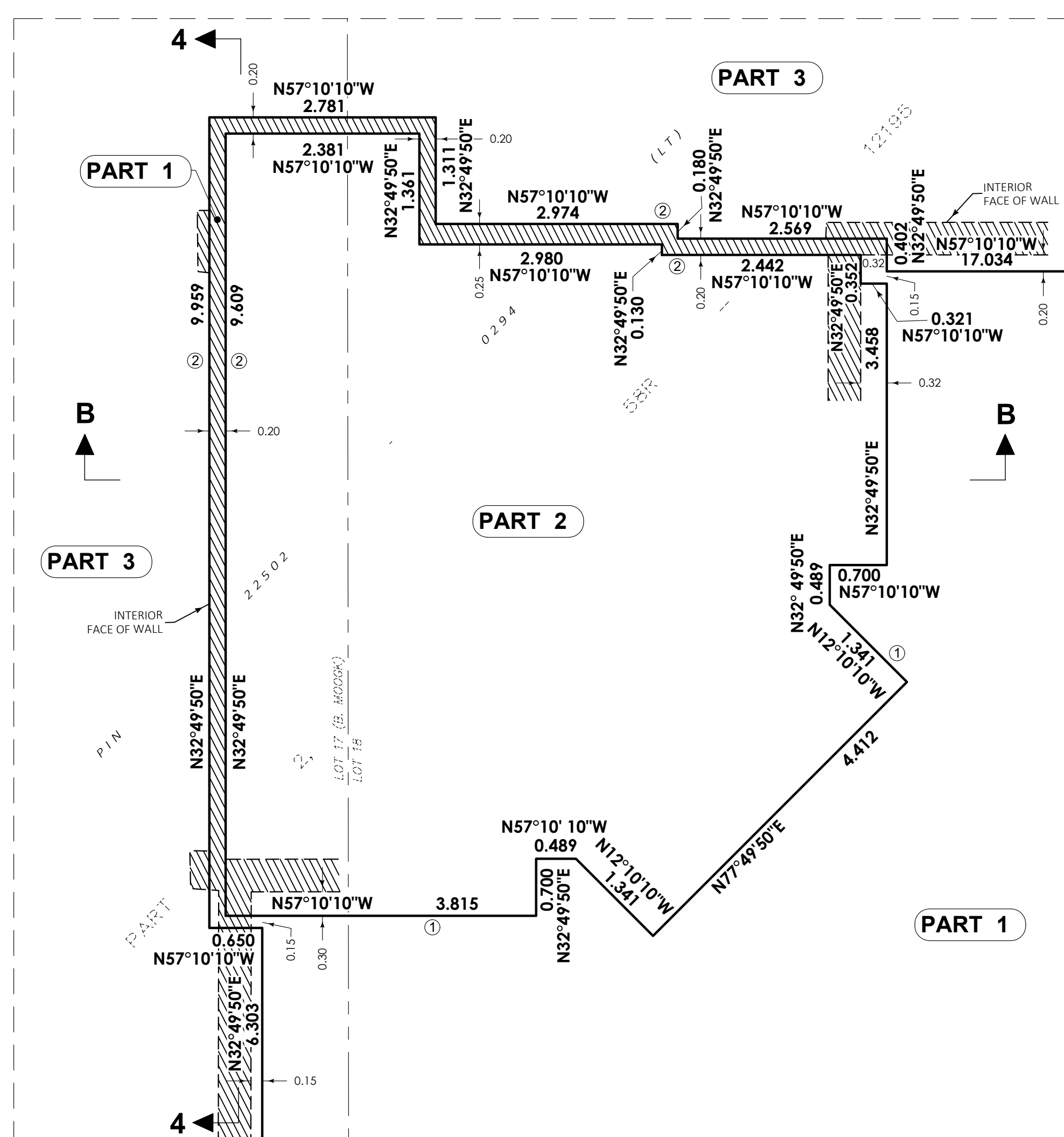
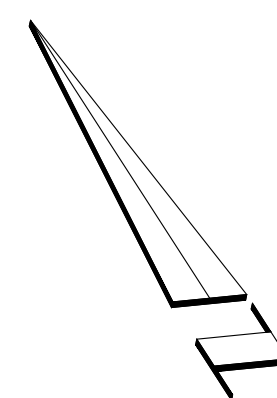
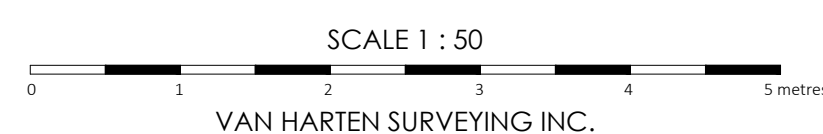
DRAWN BY: AK CHECKED BY: MS PROJECT NO: 21393-13
Mar 28, 2024 11:00:07 AM
M:\Geographic\KW\Kitchener\364\ACAD\R PLAN CONDO LT17-19 PL364 (21393-13) (UTM 2010).dwg



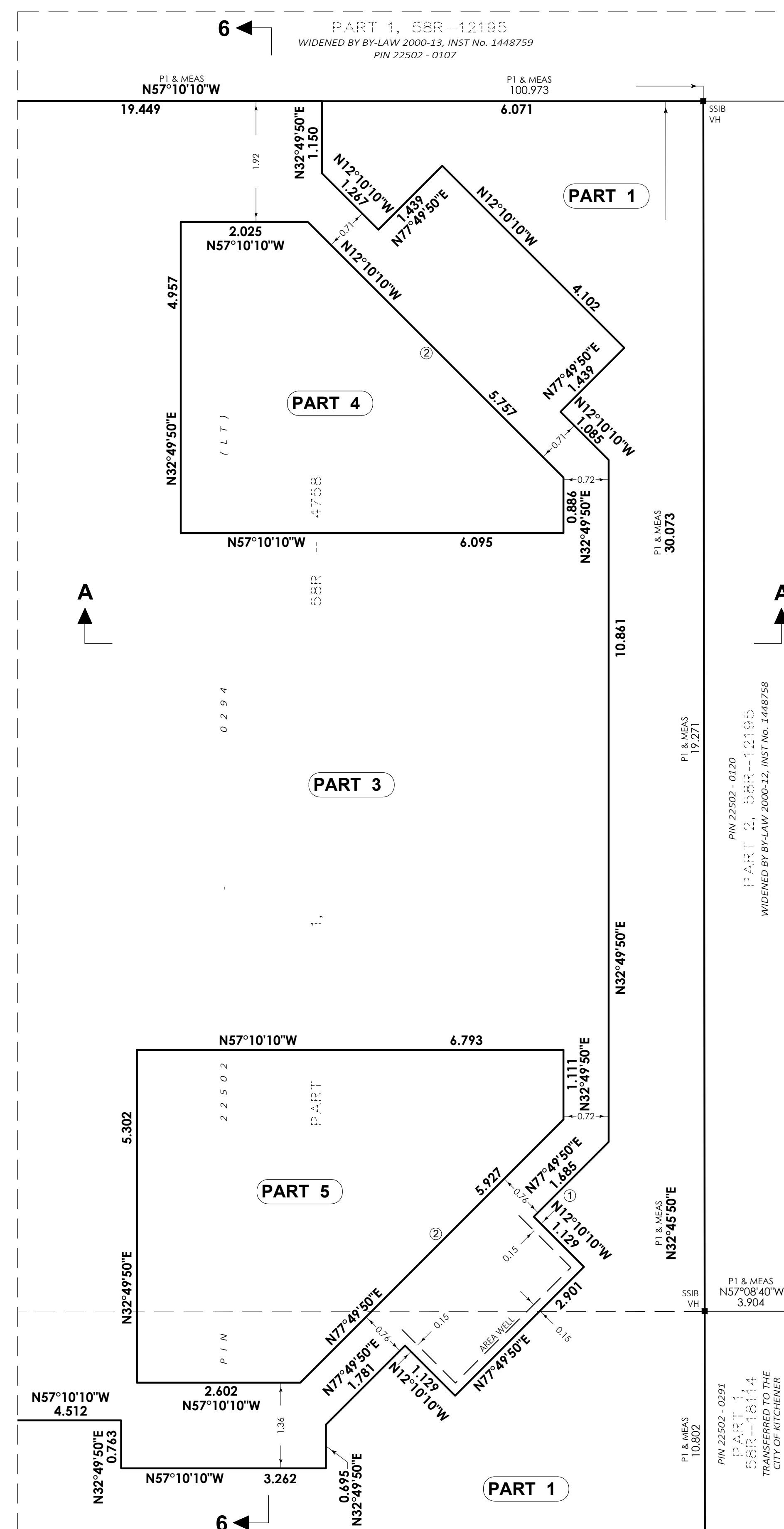
- BOUNDARY DEFINITIONS FOR PARTS**
- HORIZONTAL LIMIT IS BASED ON DIMENSIONS.
 - THE INTERIOR SURFACE OF THE CONCRETE BLOCK WALL AND THE PROJECTIONS THEREOF.
 - UPPER VERTICAL LIMIT BEING THE LOWER SURFACE OF THE UNFINISHED CONCRETE SLAB.
 - LOWER VERTICAL LIMIT BEING THE UPPER SURFACE OF THE UNFINISHED CONCRETE SLAB.
 - UPPER VERTICAL LIMIT BEING THE UPPER SURFACE OF THE FINISHED ROOF.

- LEGEND:**
- DENOTES SURVEY MONUMENT SET
 - DENOTES SURVEY MONUMENT FOUND
 - SB DENOTES 0.25 x 0.25 x 1.20 STANDARD IRON BAR
 - IB DENOTES 0.15 x 0.15 x 0.60 IRON BAR
 - SSIB DENOTES 0.25 x 0.25 x 0.60 SHORT STANDARD IRON BAR
 - RIB DENOTES ROUND IRON BAR
 - PB DENOTES 0.25 x 0.25 x 0.30 PLASTIC BAR
 - CC DENOTES CUT CROSS
 - IT DENOTES IRON TUBE
 - CP DENOTES CONCRETE PIN
 - WIT DENOTES WITNESS
 - OU DENOTES ORIGIN UNKNOWN
 - HP DENOTES HORIZONTAL PLANE
 - MEAS DENOTES MEASURED
 - 1114 DENOTES METZ & LORENZ LTD.
 - ACI DENOTES ACI SURVEY CONSULTANTS
 - VH DENOTES VAN HARTEN SURVEYING INC.
 - P1 DENOTES DEPOSITED PLAN 58R-21995

DETAIL 'A' & 'B' SHOWING
PARTS AT
ELEVATION 326.0



DETAIL 'A'
SCALE 1:50

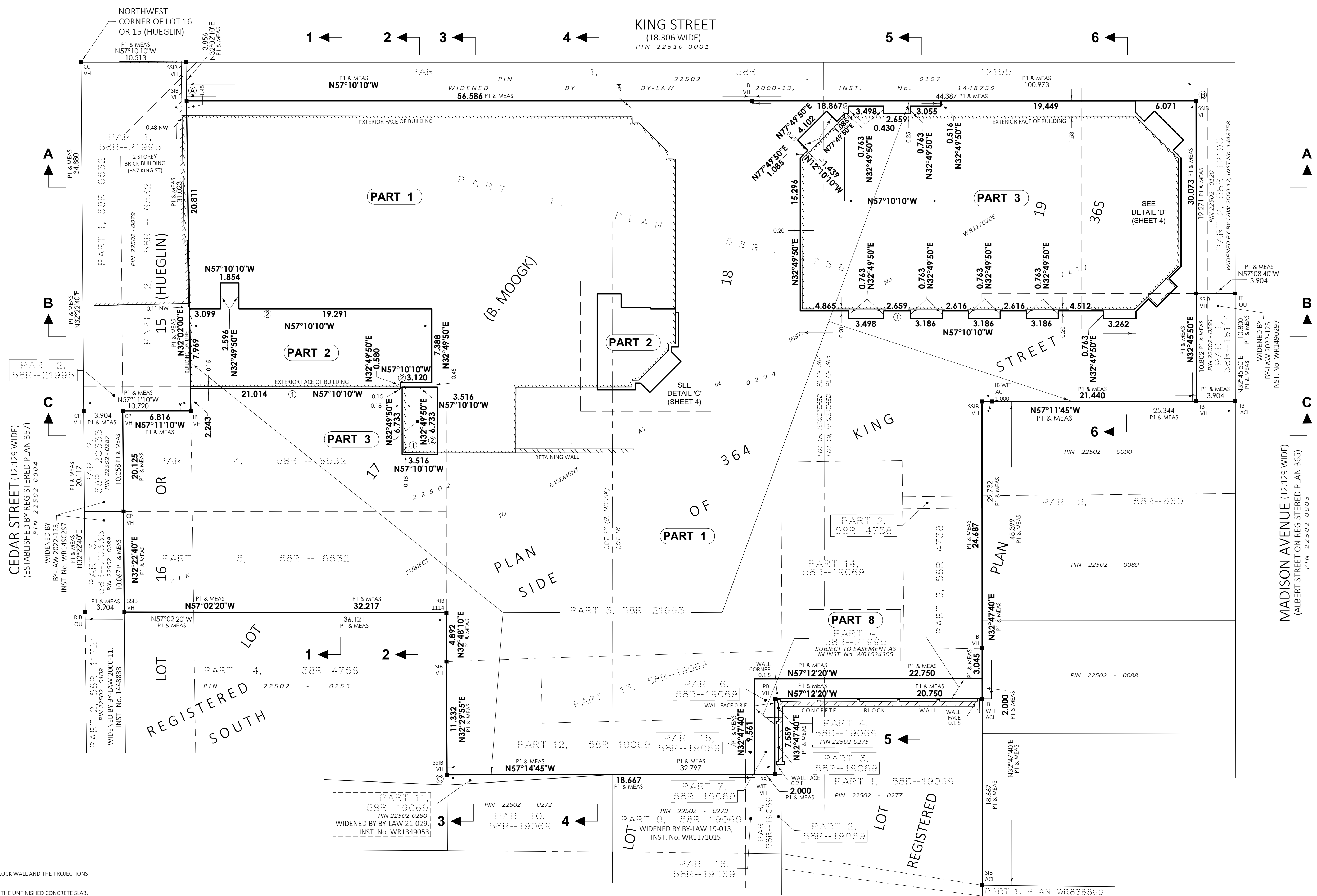
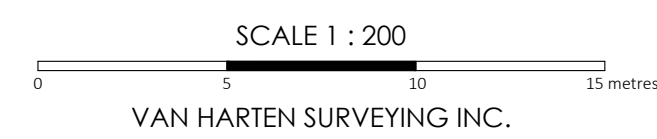


DETAIL 'B'
SCALE 1:50

BOUNDARY DEFINITIONS FOR PARTS

- ① HORIZONTAL LIMIT IS BASED ON DIMENSIONS.
- ② DENOTES THE INTERIOR SURFACE OF THE CONCRETE BLOCK WALL AND THE PROJECTIONS THEREOF.
- ③ UPPER VERTICAL LIMIT BEING THE LOWER SURFACE OF THE UNFINISHED CONCRETE SLAB.
- ④ LOWER VERTICAL LIMIT BEING THE UPPER SURFACE OF THE UNFINISHED CONCRETE SLAB.
- ⑤ UPPER VERTICAL LIMIT BEING THE UPPER SURFACE OF THE FINISHED ROOF.

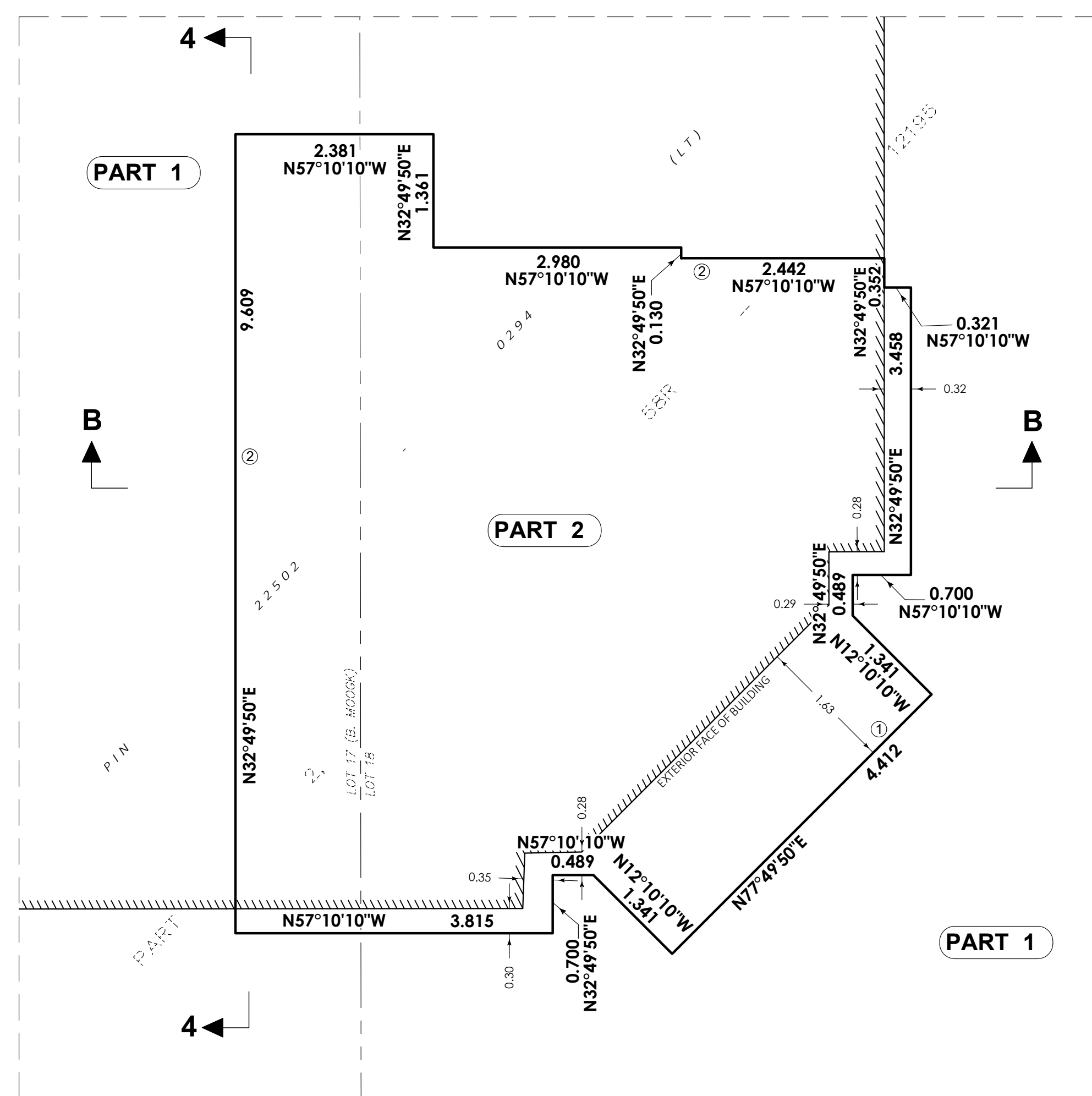
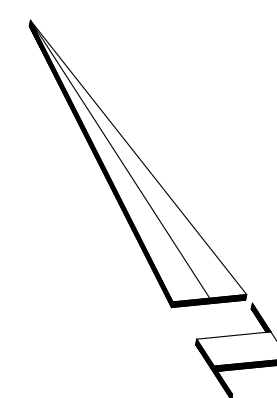
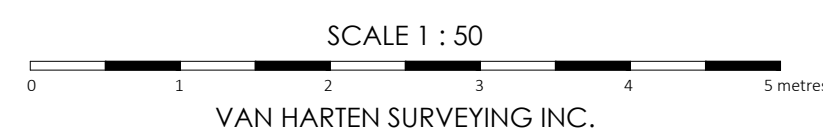
PLAN SHOWING
PARTS AT
ELEVATION 328.3



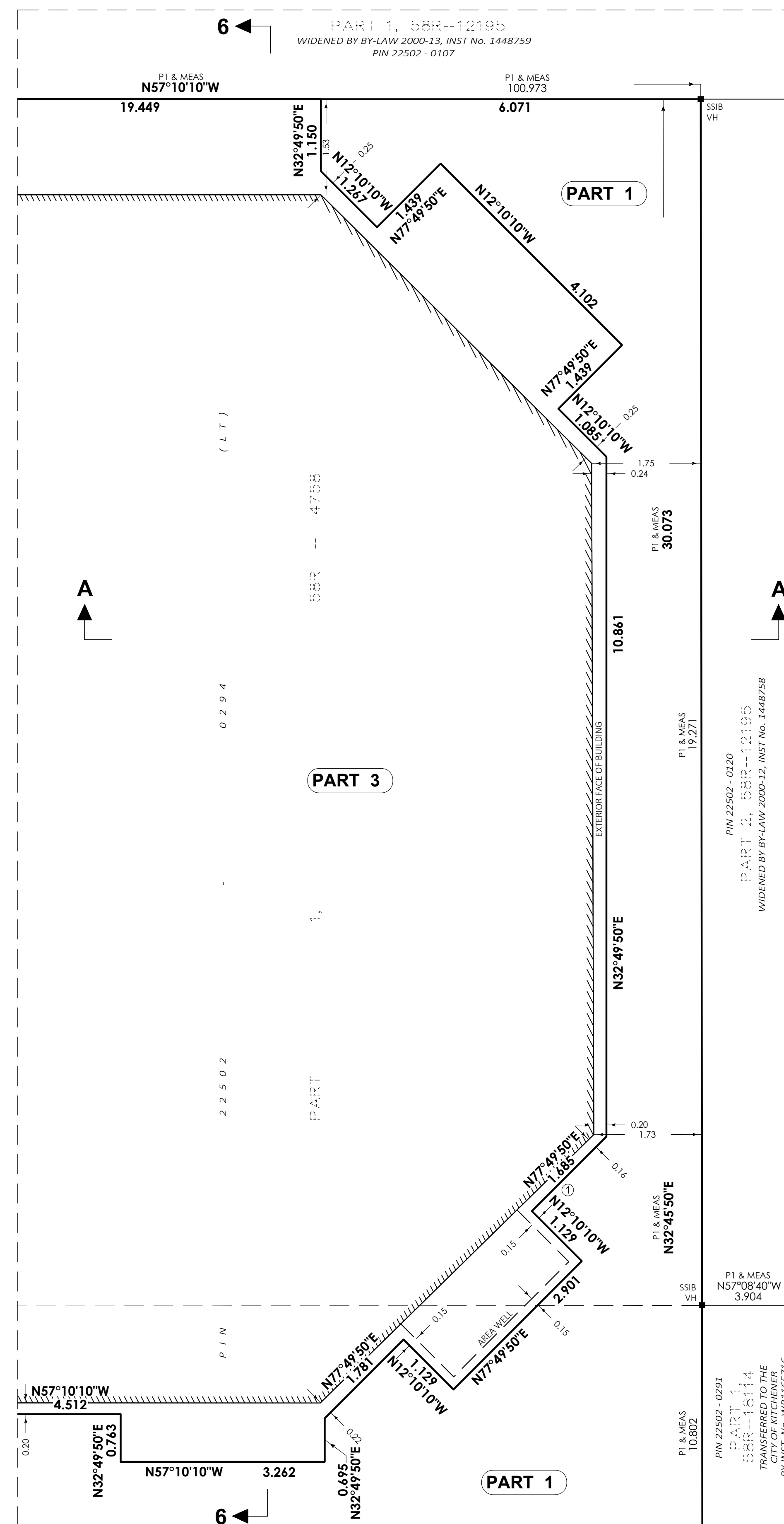
BOUNDARY DEFINITIONS FOR PARTS

- ① HORIZONTAL LIMIT IS BASED ON DIMENSIONS.
- ② DENOTES THE INTERIOR SURFACE OF THE CONCRETE BLOCK WALL AND THE PROJECTIONS THEREOF.
- ③ UPPER VERTICAL LIMIT BEING THE LOWER SURFACE OF THE UNFINISHED CONCRETE SLAB.
- ④ LOWER VERTICAL LIMIT BEING THE UPPER SURFACE OF THE UNFINISHED CONCRETE SLAB.
- ⑤ UPPER VERTICAL LIMIT BEING THE UPPER SURFACE OF THE FINISHED ROOF.

DETAIL 'C' & 'D' SHOWING
PARTS AT
ELEVATION 328.3



DETAIL 'C'
SCALE 1:50

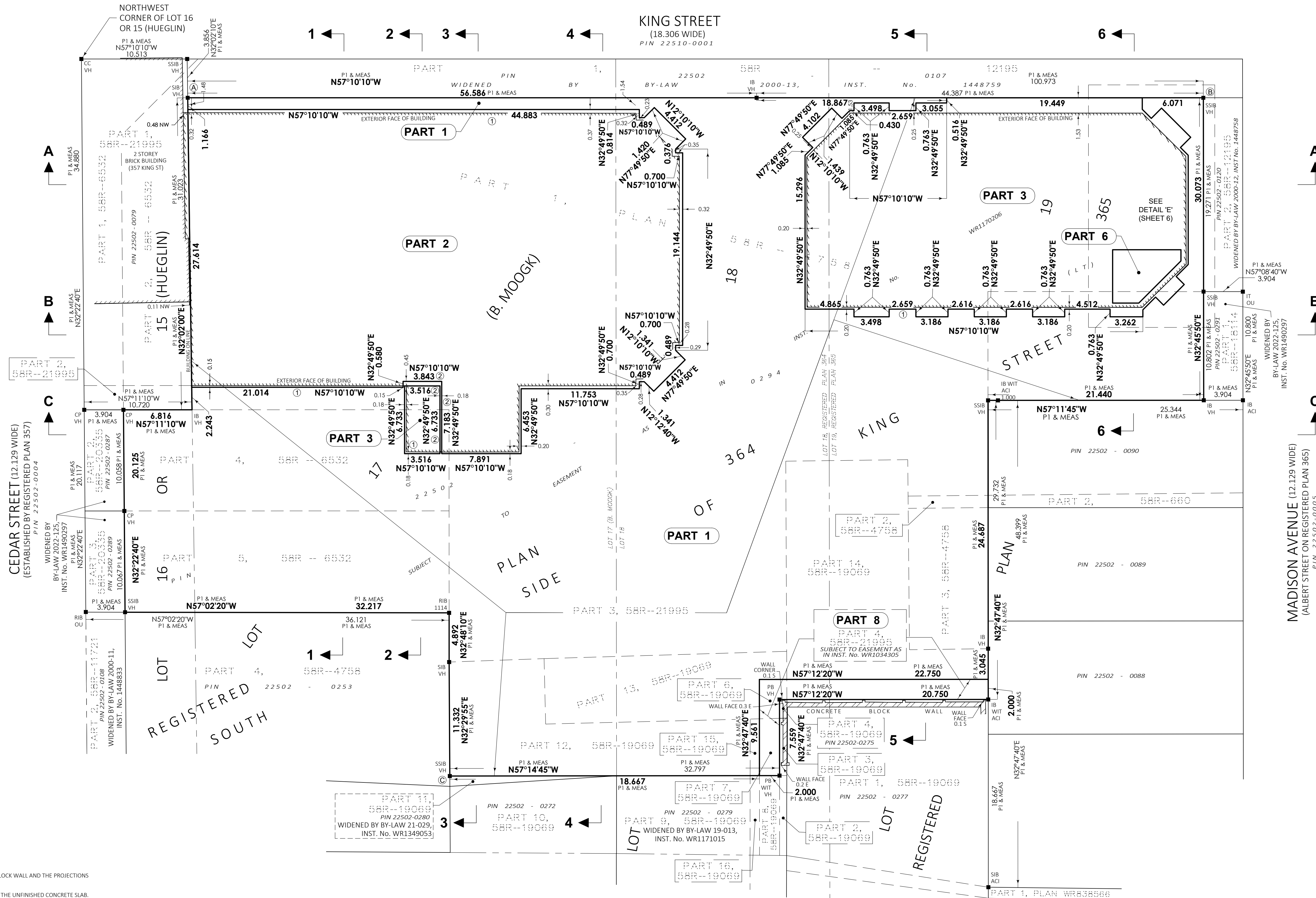
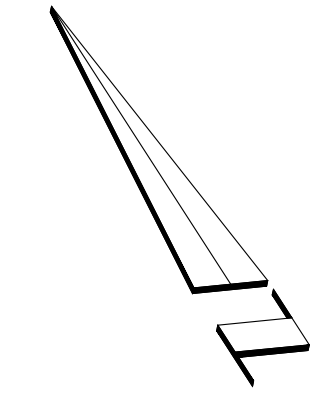
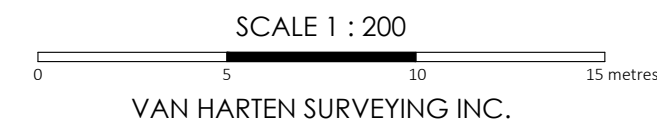


DETAIL 'D'
SCALE 1:50

BOUNDARY DEFINITIONS FOR PARTS

- ① HORIZONTAL LIMIT IS BASED ON DIMENSIONS.
- ② DENOTES THE INTERIOR SURFACE OF THE CONCRETE BLOCK WALL AND THE PROJECTIONS THEREOF.
- ③ UPPER VERTICAL LIMIT BEING THE LOWER SURFACE OF THE UNFINISHED CONCRETE SLAB.
- ④ LOWER VERTICAL LIMIT BEING THE UPPER SURFACE OF THE UNFINISHED CONCRETE SLAB.
- ⑤ UPPER VERTICAL LIMIT BEING THE UPPER SURFACE OF THE FINISHED ROOF.

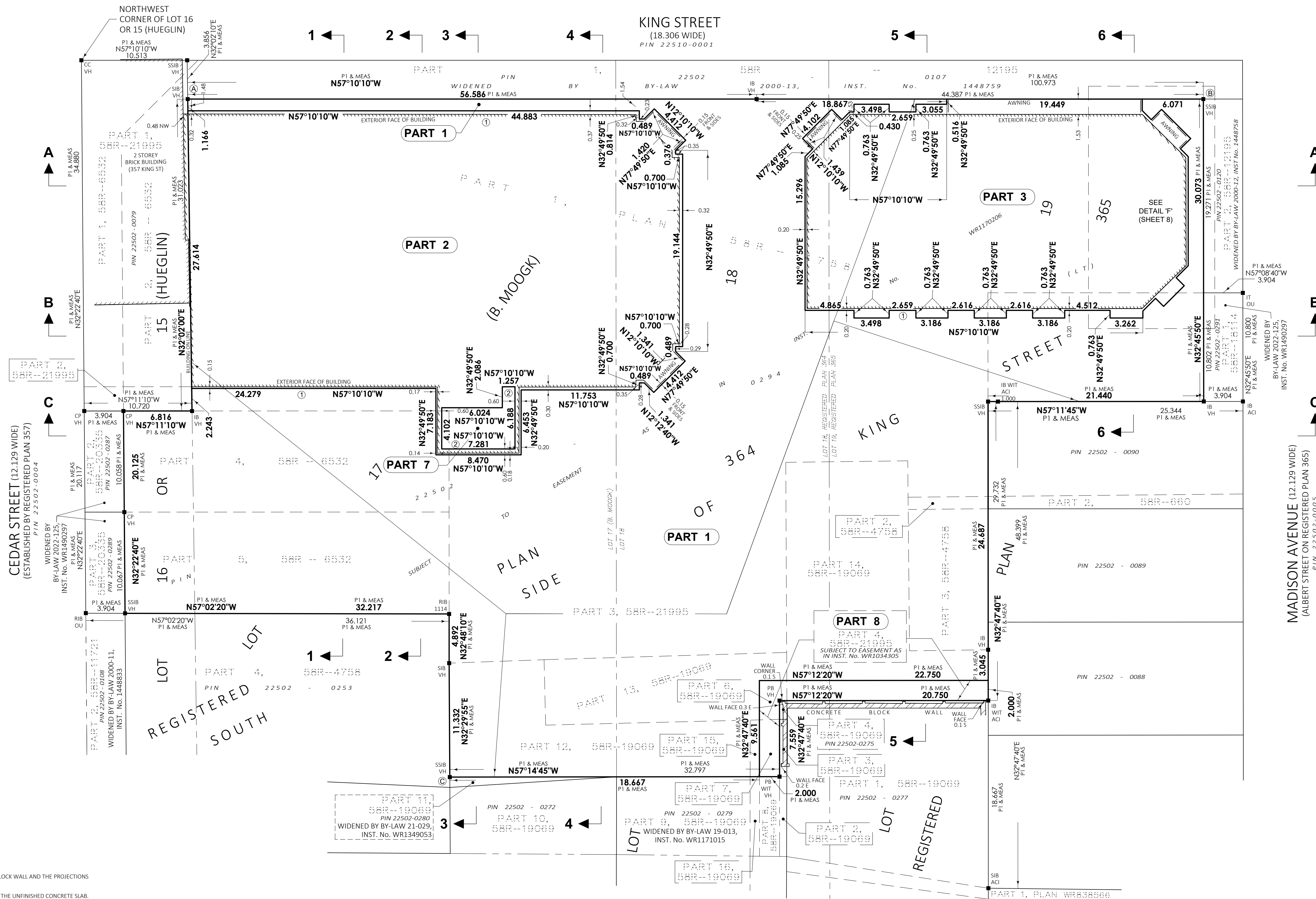
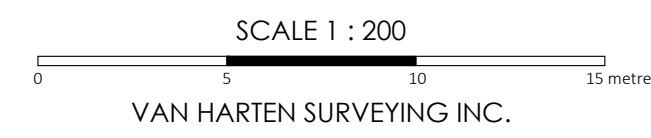
PLAN SHOWING
PARTS AT
ELEVATION 330.0



BOUNDARY DEFINITIONS FOR PARTS

- ① HORIZONTAL LIMIT IS BASED ON DIMENSIONS.
- ② DENOTES THE INTERIOR SURFACE OF THE CONCRETE BLOCK WALL AND THE PROJECTIONS THEREOF.
- ③ UPPER VERTICAL LIMIT BEING THE LOWER SURFACE OF THE UNFINISHED CONCRETE SLAB.
- ④ LOWER VERTICAL LIMIT BEING THE UPPER SURFACE OF THE UNFINISHED CONCRETE SLAB.
- ⑤ UPPER VERTICAL LIMIT BEING THE UPPER SURFACE OF THE FINISHED ROOF.

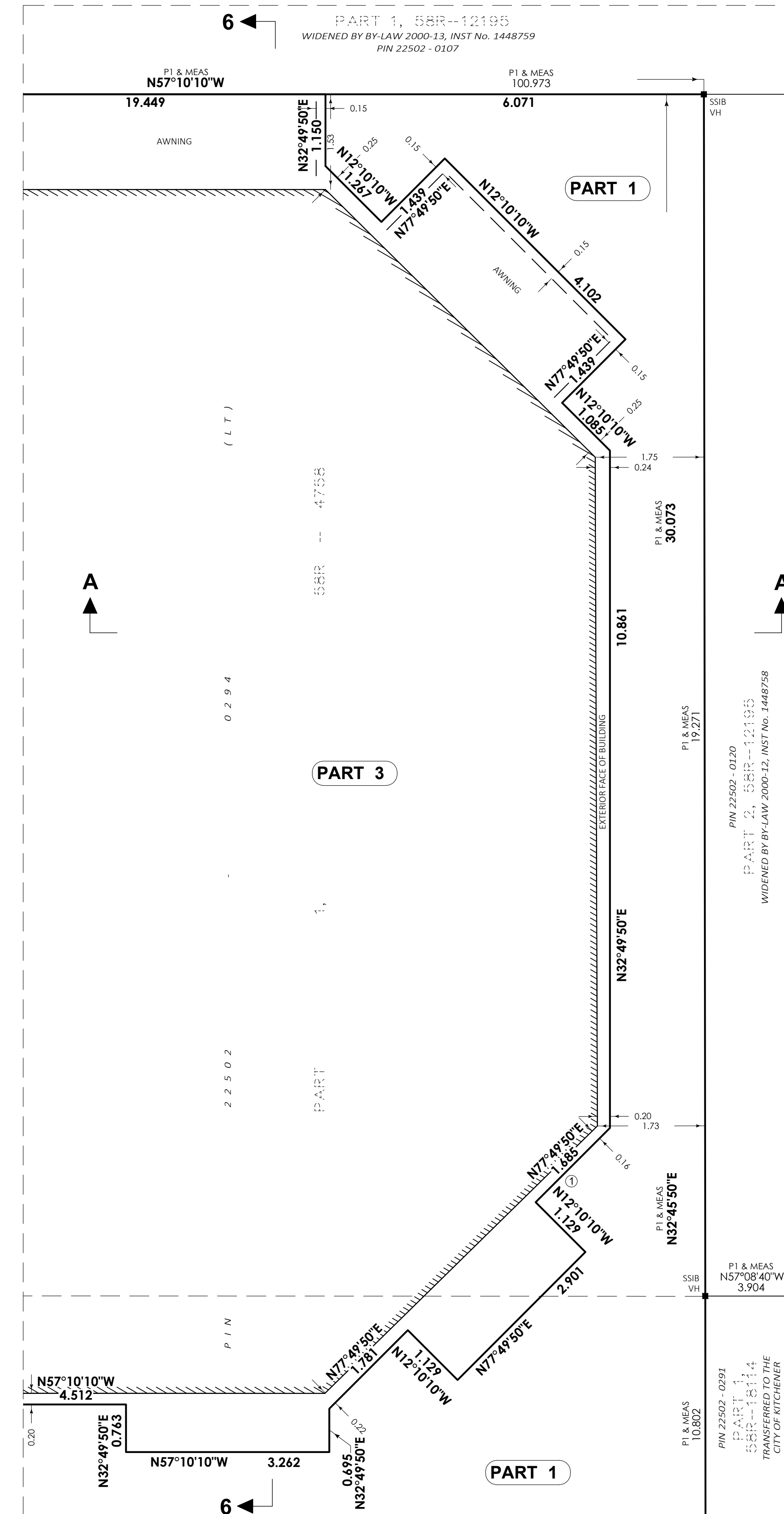
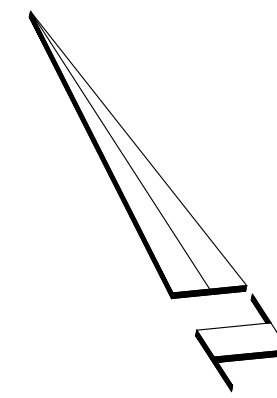
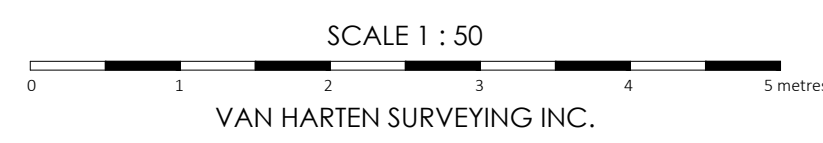
PLAN SHOWING
PARTS AT
ELEVATION 333.0



BOUNDARY DEFINITIONS FOR PARTS

- ① HORIZONTAL LIMIT IS BASED ON DIMENSIONS.
- ② DENOTES THE INTERIOR SURFACE OF THE CONCRETE BLOCK WALL AND THE PROJECTIONS THEREOF.
- ③ UPPER VERTICAL LIMIT BEING THE LOWER SURFACE OF THE UNFINISHED CONCRETE SLAB.
- ④ LOWER VERTICAL LIMIT BEING THE UPPER SURFACE OF THE UNFINISHED CONCRETE SLAB.
- ⑤ UPPER VERTICAL LIMIT BEING THE UPPER SURFACE OF THE FINISHED ROOF.

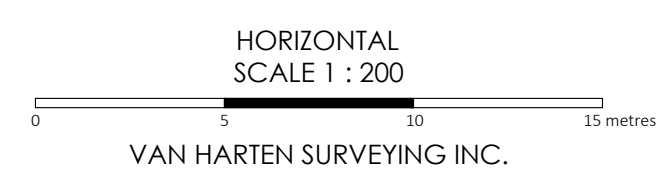
DETAIL 'F' SHOWING
PARTS AT
ELEVATION 333.0



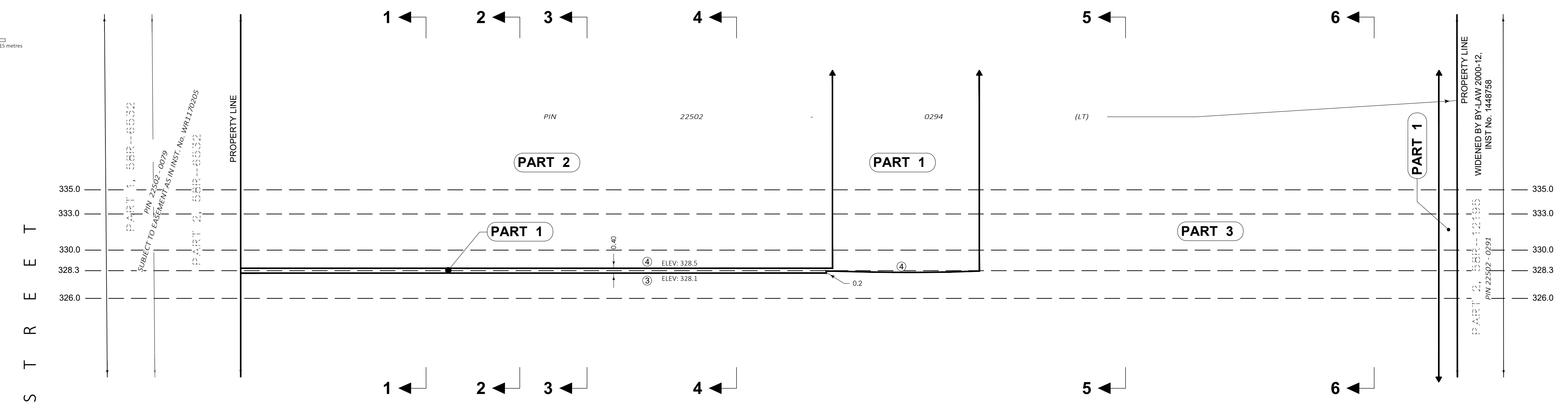
DETAIL 'F'
SCALE 1:50

BOUNDARY DEFINITIONS FOR PARTS

- ① HORIZONTAL LIMIT IS BASED ON DIMENSIONS.
- ② DENOTES THE INTERIOR SURFACE OF THE CONCRETE BLOCK WALL AND THE PROJECTIONS THEREOF.
- ③ UPPER VERTICAL LIMIT BEING THE LOWER SURFACE OF THE UNFINISHED CONCRETE SLAB.
- ④ LOWER VERTICAL LIMIT BEING THE UPPER SURFACE OF THE UNFINISHED CONCRETE SLAB.
- ⑤ UPPER VERTICAL LIMIT BEING THE UPPER SURFACE OF THE FINISHED ROOF.

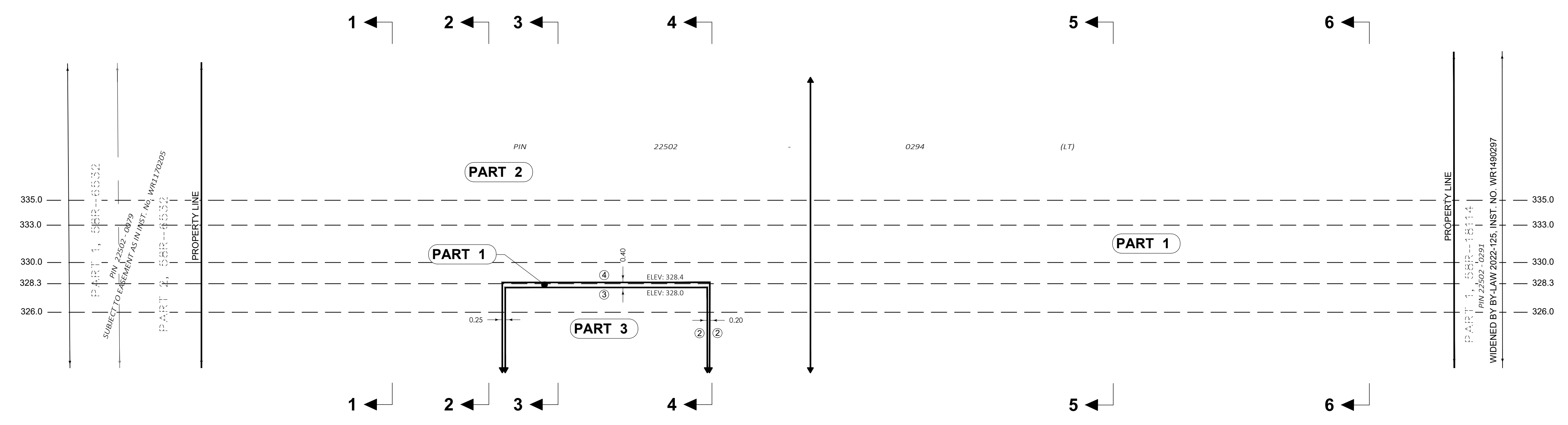


SECTION A-A



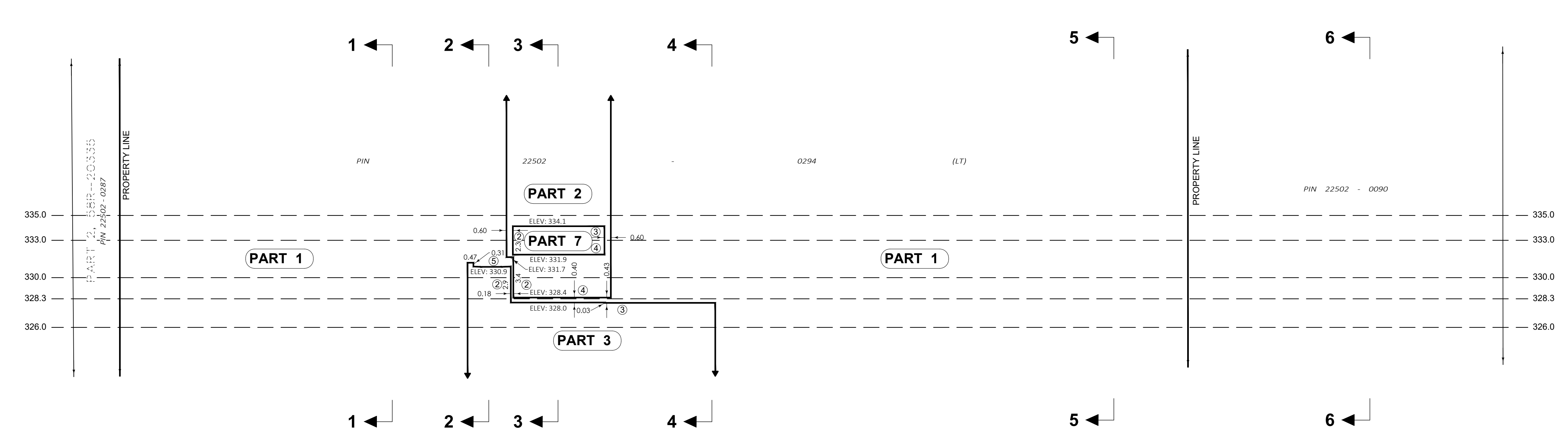
A V E N U E

SECTION B-B



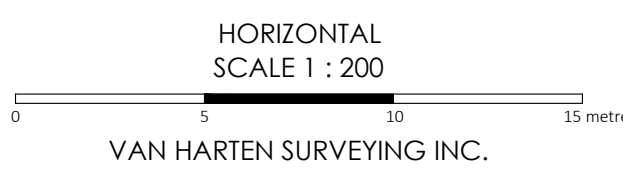
C E D A R

SECTION C-C



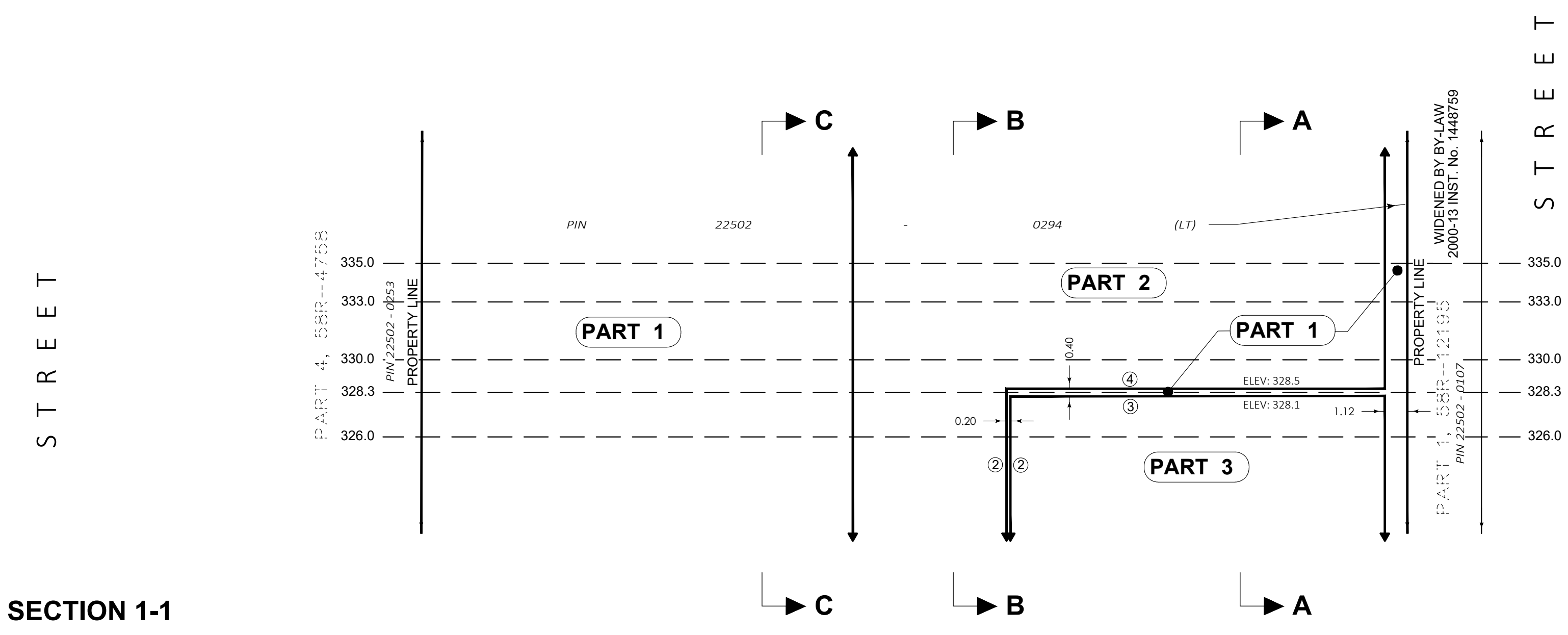
M A D I S O N

- BOUNDARY DEFINITIONS FOR PARTS**
- ① HORIZONTAL LIMIT IS BASED ON DIMENSIONS.
 - ② DENOTES THE INTERIOR SURFACE OF THE CONCRETE BLOCK WALL AND THE PROJECTIONS THEREOF.
 - ③ UPPER VERTICAL LIMIT BEING THE LOWER SURFACE OF THE UNFINISHED CONCRETE SLAB.
 - ④ LOWER VERTICAL LIMIT BEING THE UPPER SURFACE OF THE UNFINISHED CONCRETE SLAB.
 - ⑤ UPPER VERTICAL LIMIT BEING THE UPPER SURFACE OF THE FINISHED ROOF.

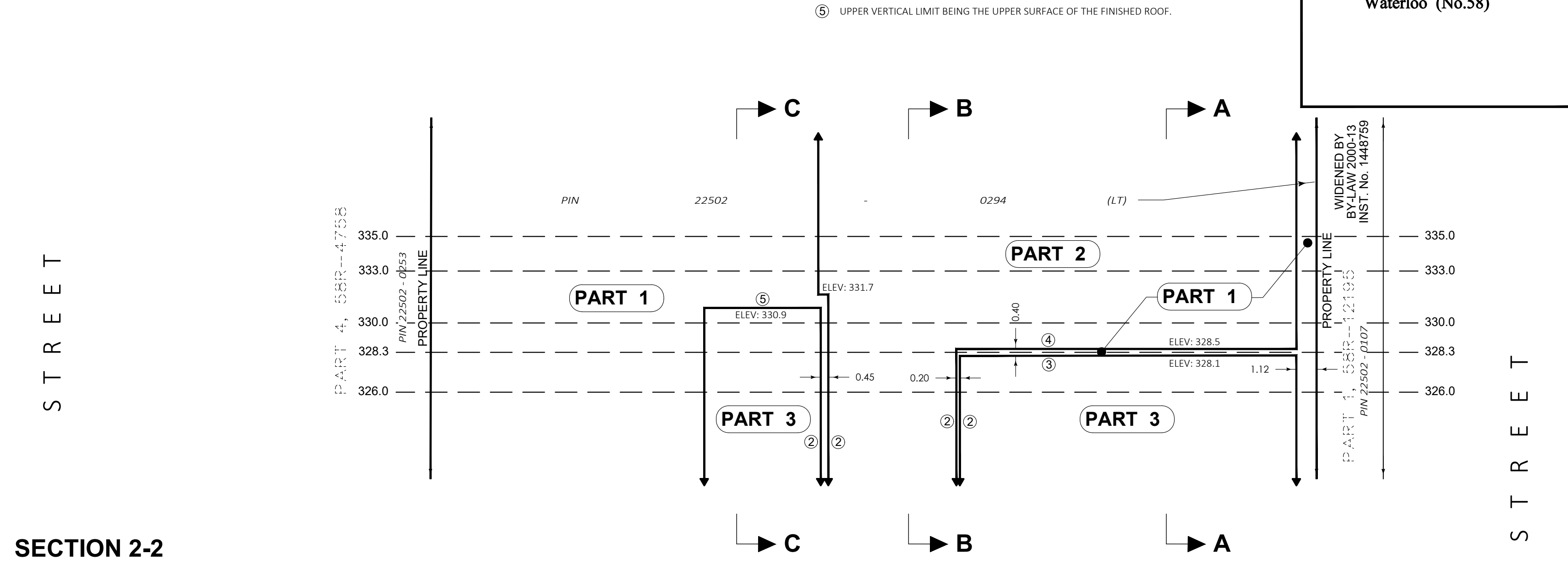


BOUNDARY DEFINITIONS FOR PARTS

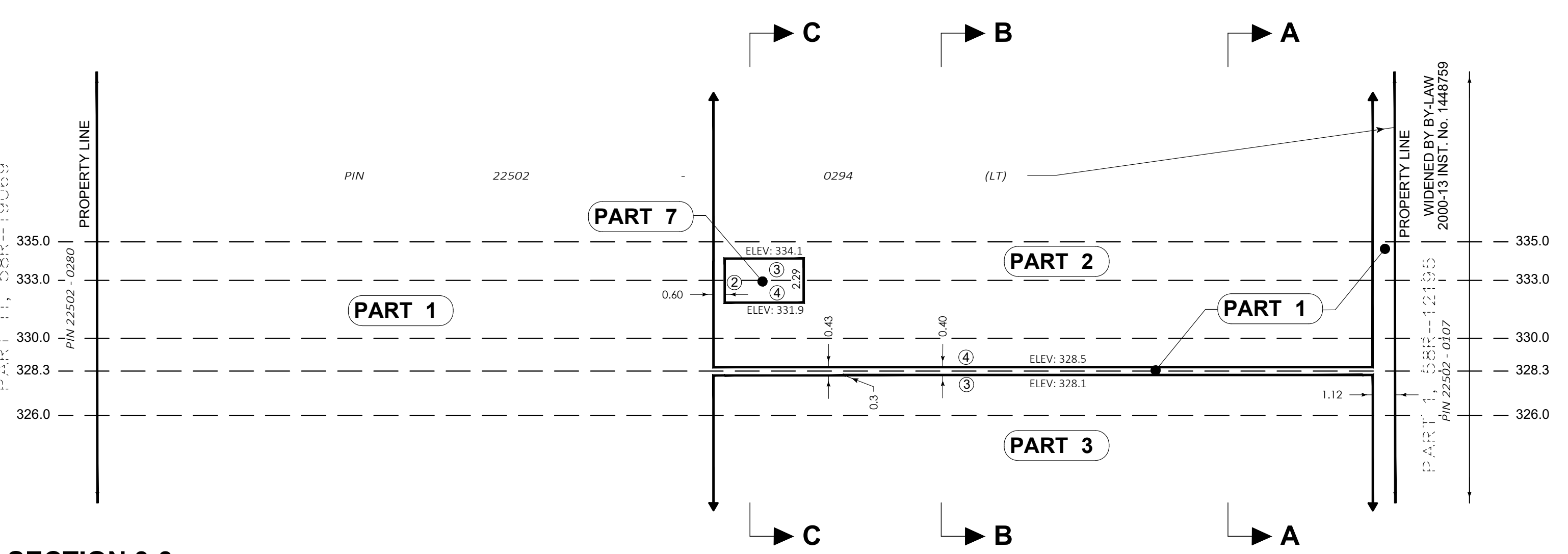
- ① HORIZONTAL LIMIT IS BASED ON DIMENSIONS.
- ② DENOTES THE INTERIOR SURFACE OF THE CONCRETE BLOCK WALL AND THE PROJECTIONS THEREOF.
- ③ UPPER VERTICAL LIMIT BEING THE LOWER SURFACE OF THE UNFINISHED CONCRETE SLAB.
- ④ LOWER VERTICAL LIMIT BEING THE UPPER SURFACE OF THE UNFINISHED CONCRETE SLAB.
- ⑤ UPPER VERTICAL LIMIT BEING THE UPPER SURFACE OF THE FINISHED ROOF.



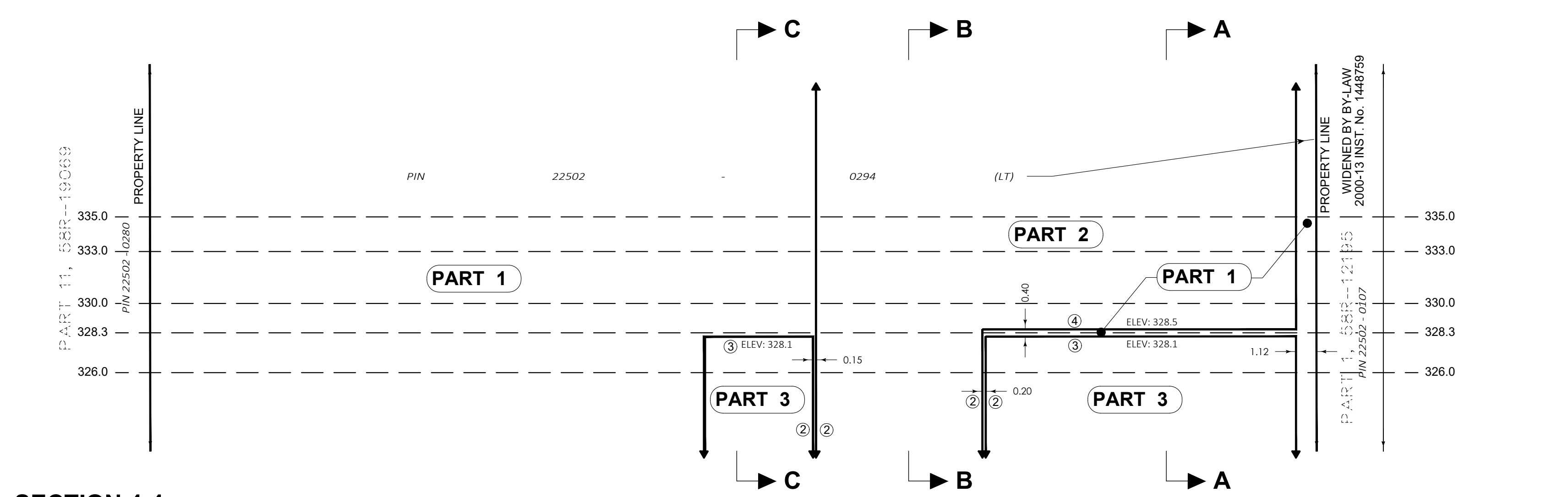
SECTION 1-1



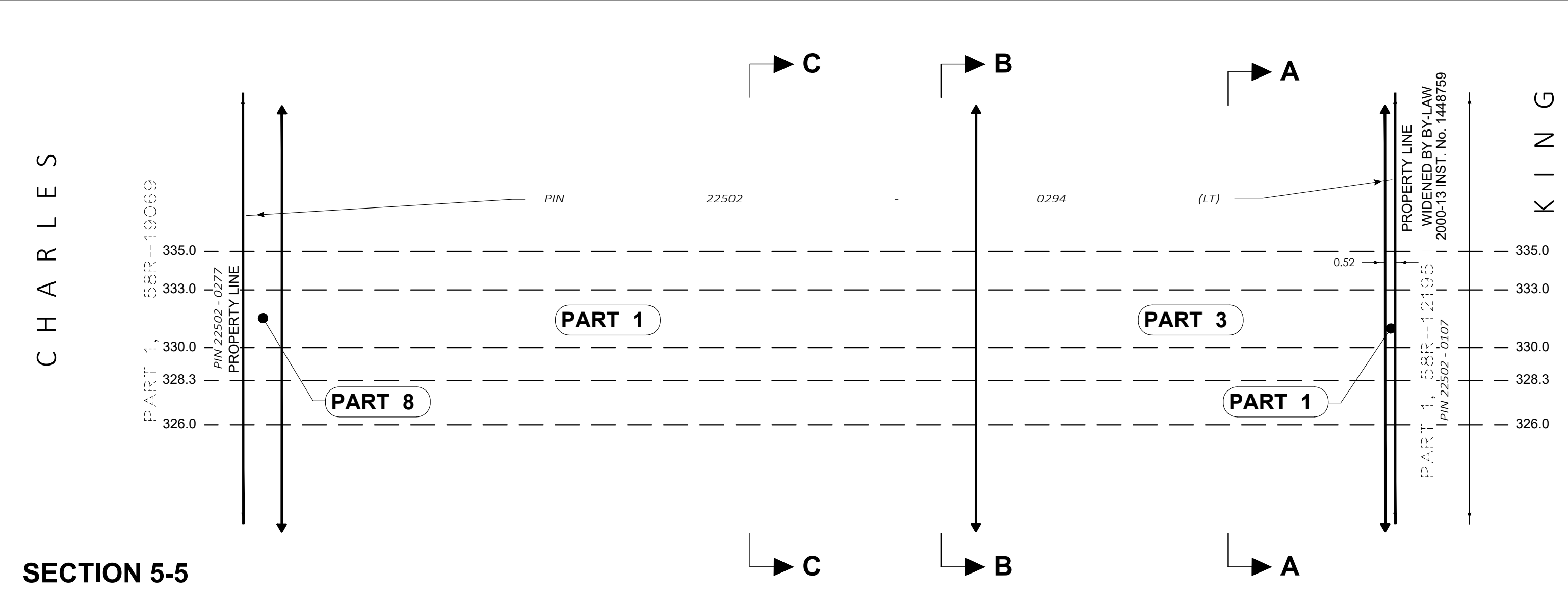
SECTION 2-2



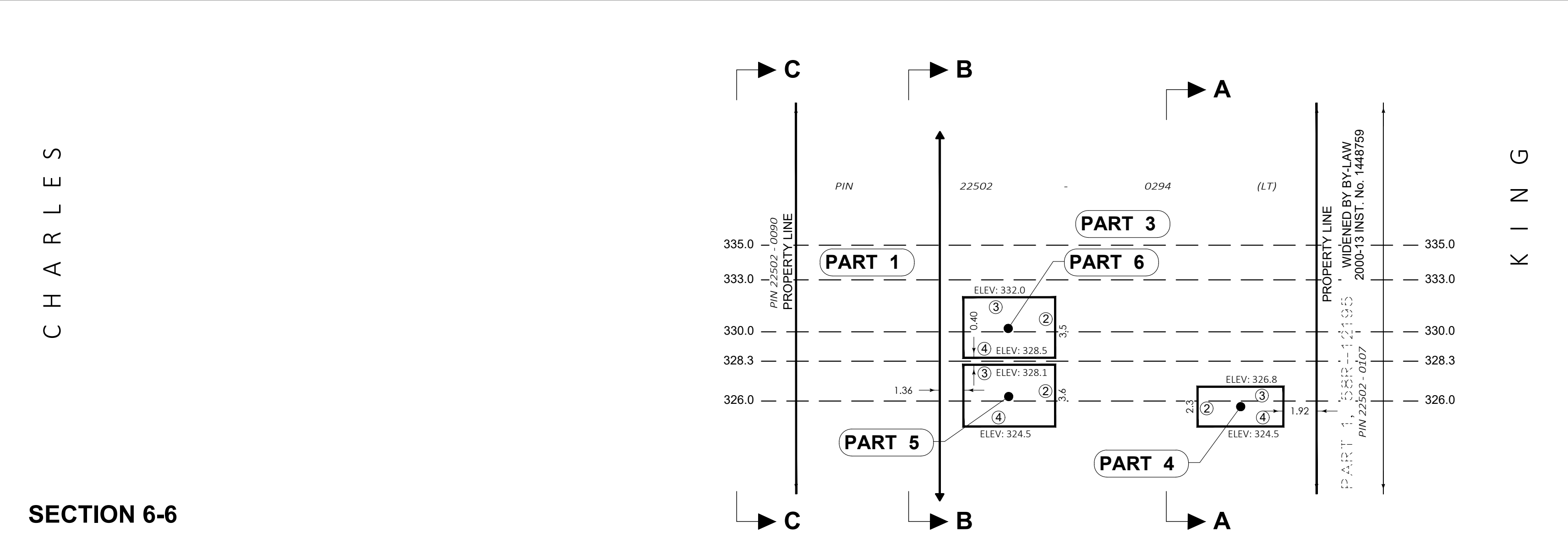
SECTION 3-3



SECTION 4-4



SECTION 5-5



SECTION 6-6

STREET

STREET

STREET

STREET

CHARLES

KING

CHARLES

KING