

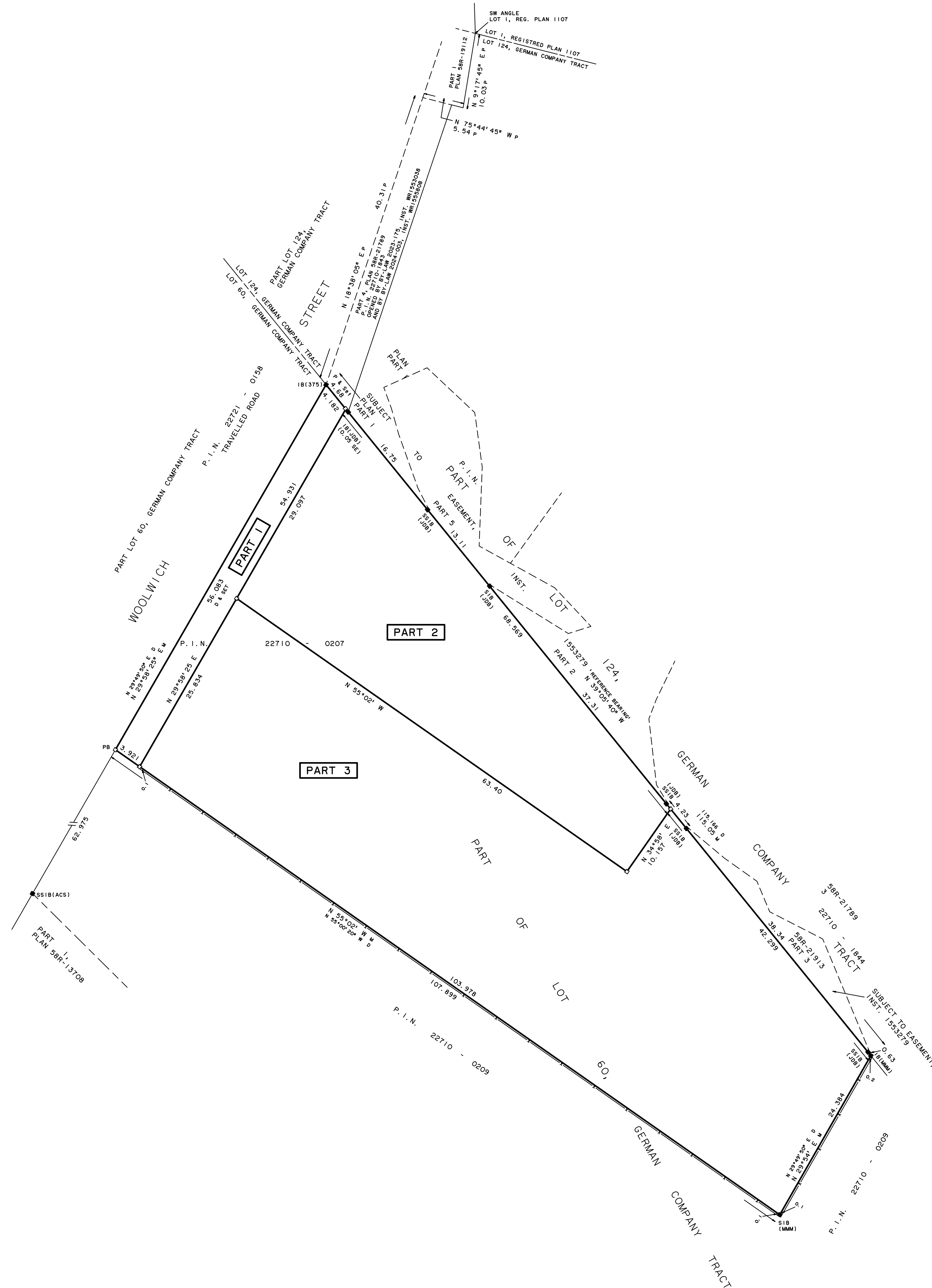
PLAN OF SURVEY
OF PART OF LOT 60, GERMAN COMPANY TRACT
CITY OF KITCHENER
REGIONAL MUNICIPALITY OF WATERLOO
GEOGRAPHIC TOWNSHIP OF WATERLOO

SCALE = 1 : 300

METRIC: DISTANCES AND COORDINATES SHOWN ON THIS PLAN ARE IN METRES AND CAN BE CONVERTED TO FEET BY DIVIDING BY 0.3048

GUENTHER RUEB SURVEYING LIMITED

NOTE: BEARINGS ARE UTM GRID AND ARE REFERRED TO THE SW 1/4 LIMIT OF PARTS 1, 2, 3 AND 5, AS SHOWN ON PLAN 58R-21913, HAVING A BEARING OF N 39°05'40" W.



PLAN 58R-
RECEIVED AND DEPOSITED

REPRESENTATIVE FOR
THE LAND REGISTRAR FOR
THE LAND TITLES DIVISION
OF WATERLOO (No. 58)

I REQUIRE THIS PLAN TO BE
DEPOSITED UNDER THE LAND TITLES
ACT.
2024

ERICH R. RUEB

SCHEDULE OF PARTS

PART	LOT	CONCESSION	P. I. N.
1	PART OF LOT 60	GERMAN COMPANY TRACT	22710-0207
2			
3			

NOTE: PARTS 1, 2 AND 3 COMPRISE ALL OF P. I. N. 22710-0207.

- LEGEND
- CC = CUT CROSS
 - CM = CONCRETE MONUMENT
 - SIB = STANDARD IRON BAR
 - SSIB = SHORT STANDARD IRON BAR
 - IB = IRON BAR
 - IT = IRON TUBE
 - PB = PLASTIC BAR
 - RIB = ROUND IRON BAR
 - x- = CHAIN LINK FENCE
 - = FOUND
 - = PLANTED
 - M = MEASURED
 - WIT = WITNESS
 - U = UNIDENTIFIED
 - INST. = INSTRUMENT
 - REG. = REGISTERED
 - P = PLAN 58R-21789
 - D = INST. 1007437
 - MMM = MARSHALL MACKLIN MONOGHAN LIMITED
 - 375 = BLACK SHOEMAKER ROBINSON AND DONALDSON LTD.

SURVEYOR'S CERTIFICATE

I CERTIFY THAT:
1. THIS SURVEY AND PLAN ARE CORRECT AND IN ACCORDANCE WITH THE SURVEYS ACT, THE SURVEYORS ACT, THE LAND TITLES ACT AND THE REGULATIONS MADE UNDER THEM.
2. THE SURVEY WAS COMPLETED ON THE DAY OF , 2024.

DATED AT KITCHENER
2024
ERICH R. RUEB
ONTARIO LAND SURVEYOR

GUENTHER RUEB SURVEYING LIMITED
KITCHENER, ONTARIO

NOTE: FOR PURPOSES OF COMPARISON, BEARINGS SHOWN ON INST. 1007437 HAVE BEEN ROTATED 0°35'40" COUNTER-CLOCKWISE