

Kitchener's Sanitary and Stormwater Utilities

Recognized with an International Water Association
2024 Climate Smart Utilities Award





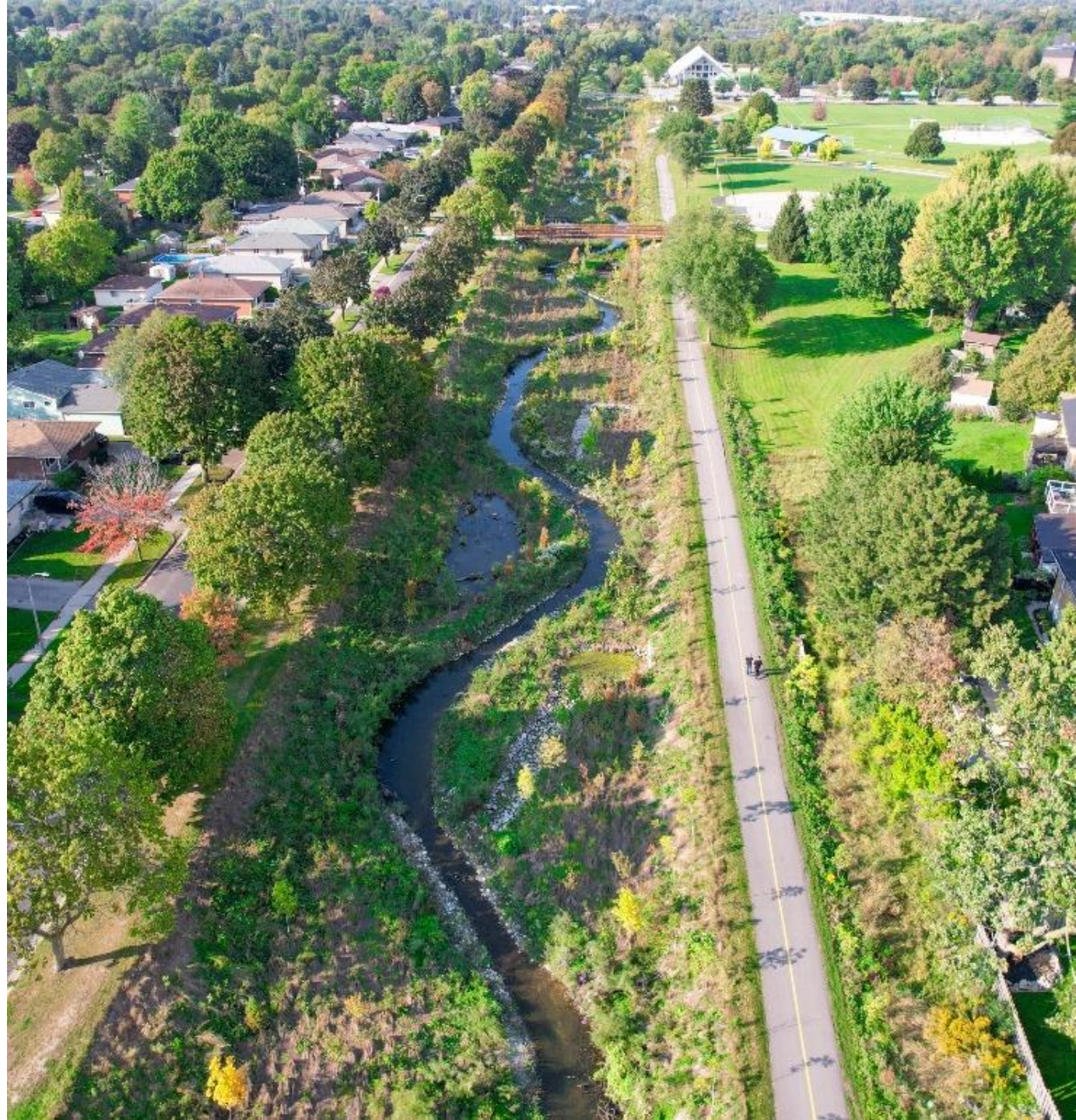
Kitchener (SSU) – 2024 IWA Climate Smart Utility Award Winner (“Most Inspiring”)

Creek Rehabilitation and Naturalization

Objective: restore and rehabilitate creeks within Kitchener's 29 sub-watersheds.

Goal:

- Enhance the natural environment
- Build ecosystem resilience
- Re-naturalize and mitigate flooding/pollution.



Before

9 Facing East at the Community Centre
This area highlights the restored outlet and new pool to slow down the flow of water.



Montgomery Creek Restoration

The Montgomery Creek restoration is one of many stormwater projects across Kitchener. When we restore creeks and add stormwater measures in parks, we reduce the risk of flooding from climate change and improve water quality. This project was funded in part by the Government of Canada. For more information, visit kitchener.ca/stormwater.





Montgomery Creek

WILSON

MARKETTE



Shoemaker Creek

Filsinger Creek 2015

Creek Naturalization

Before construction



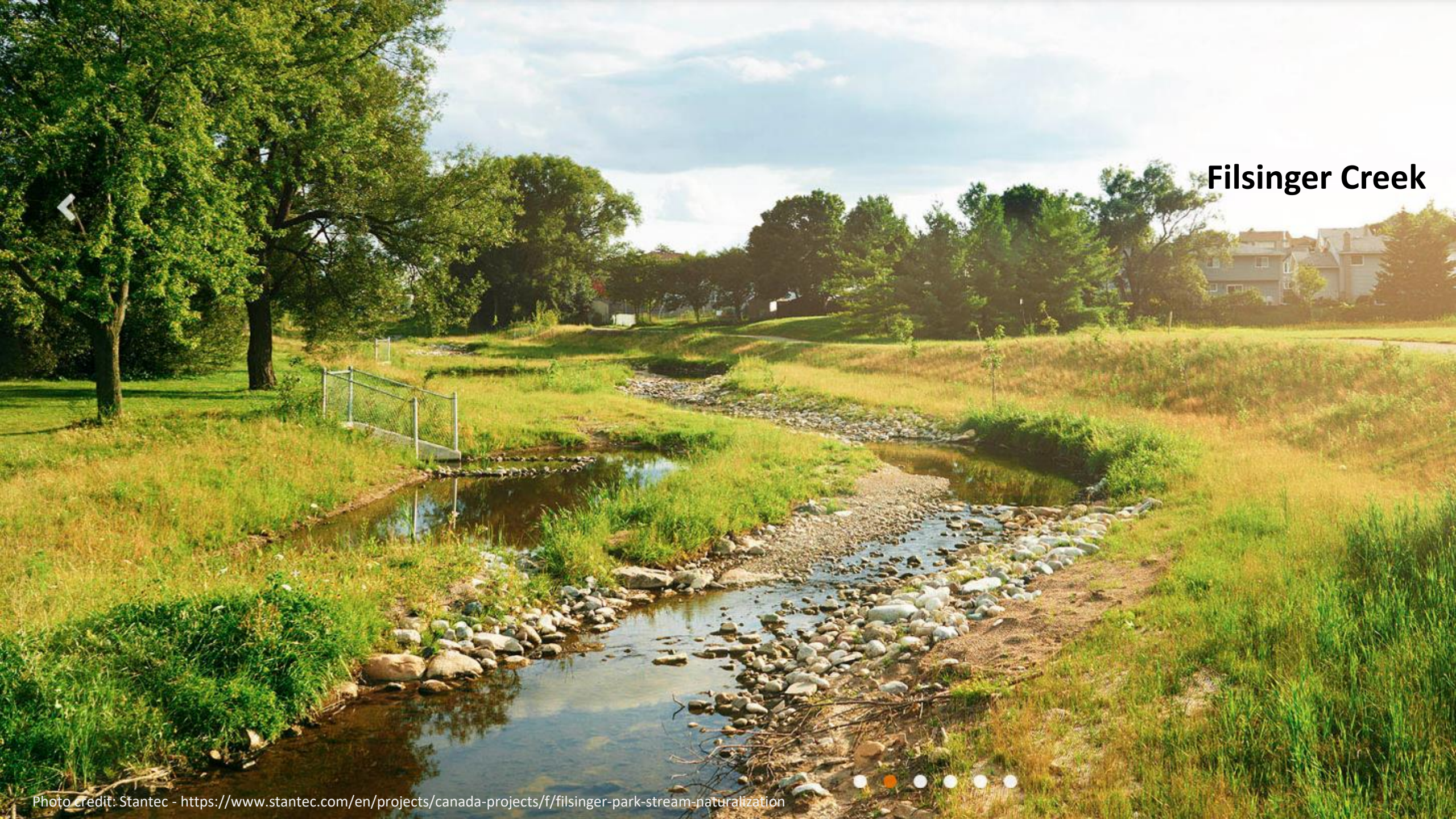
During Construction



Filsinger Creek



Filsinger Creek



Filsinger Creek

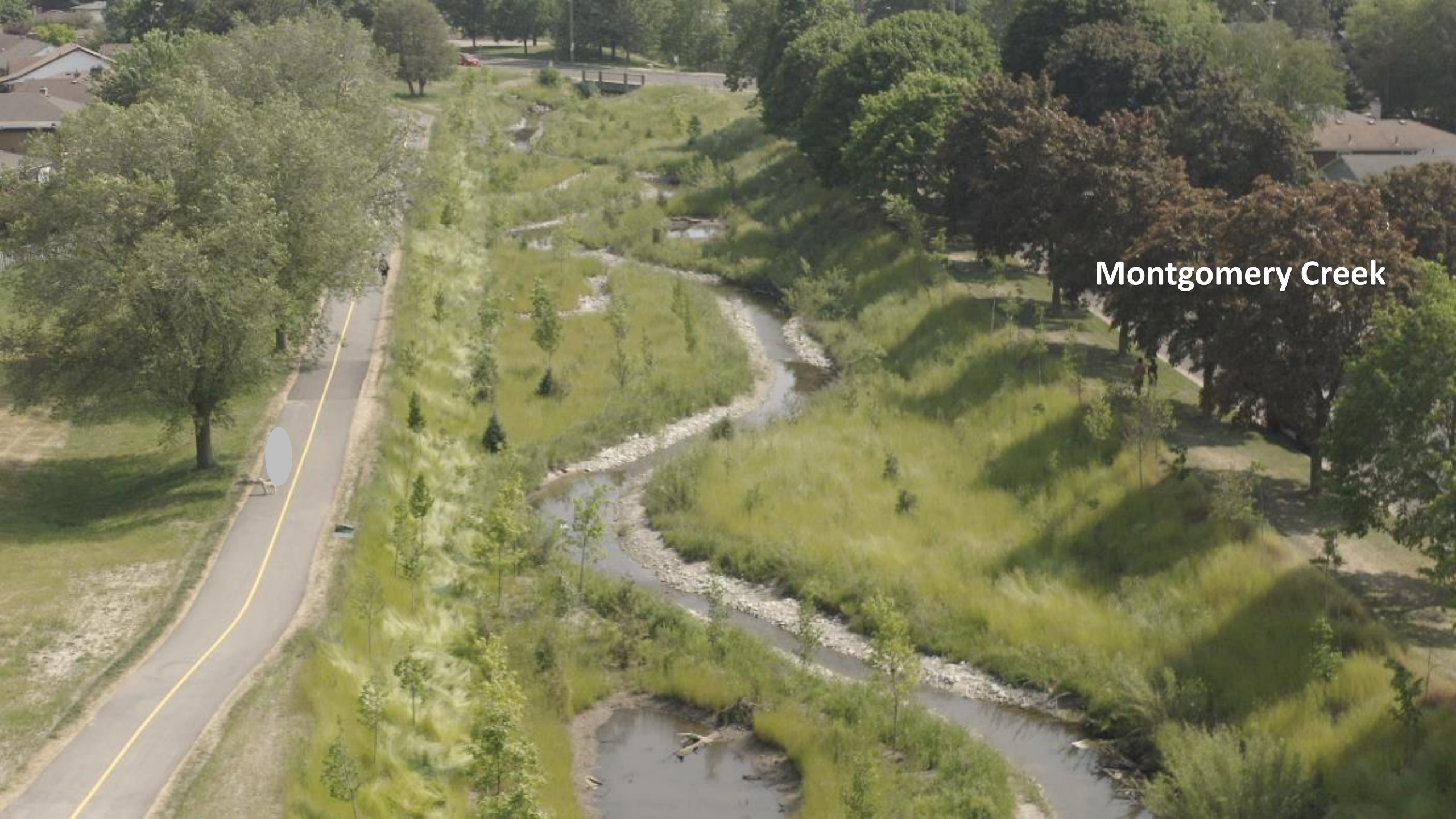




Filsinger Creek



Montgomery Creek



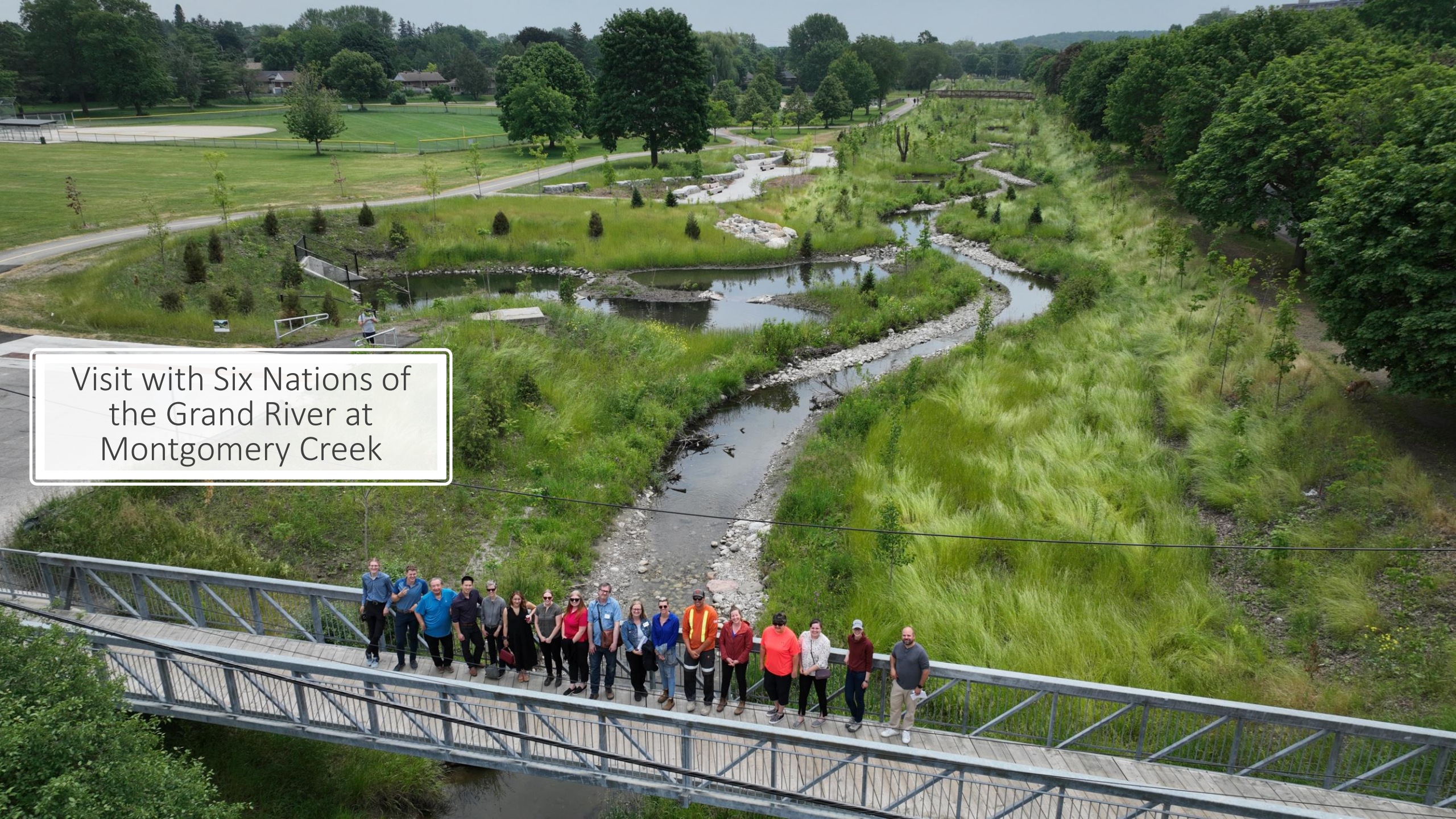
Montgomery Creek



Montgomery Creek

Montgomery Creek



An aerial photograph of a park featuring a winding creek with a rocky bed. A group of approximately 20 people is standing on a metal truss bridge with a wooden deck that spans across the creek. The surrounding landscape is lush with green grass, tall reeds, and various trees. In the background, a paved path and a baseball field are visible. A white text box with a thin black border is overlaid on the left side of the image.

Visit with Six Nations of
the Grand River at
Montgomery Creek

engage
KITCHENER
engagekitchener.ca



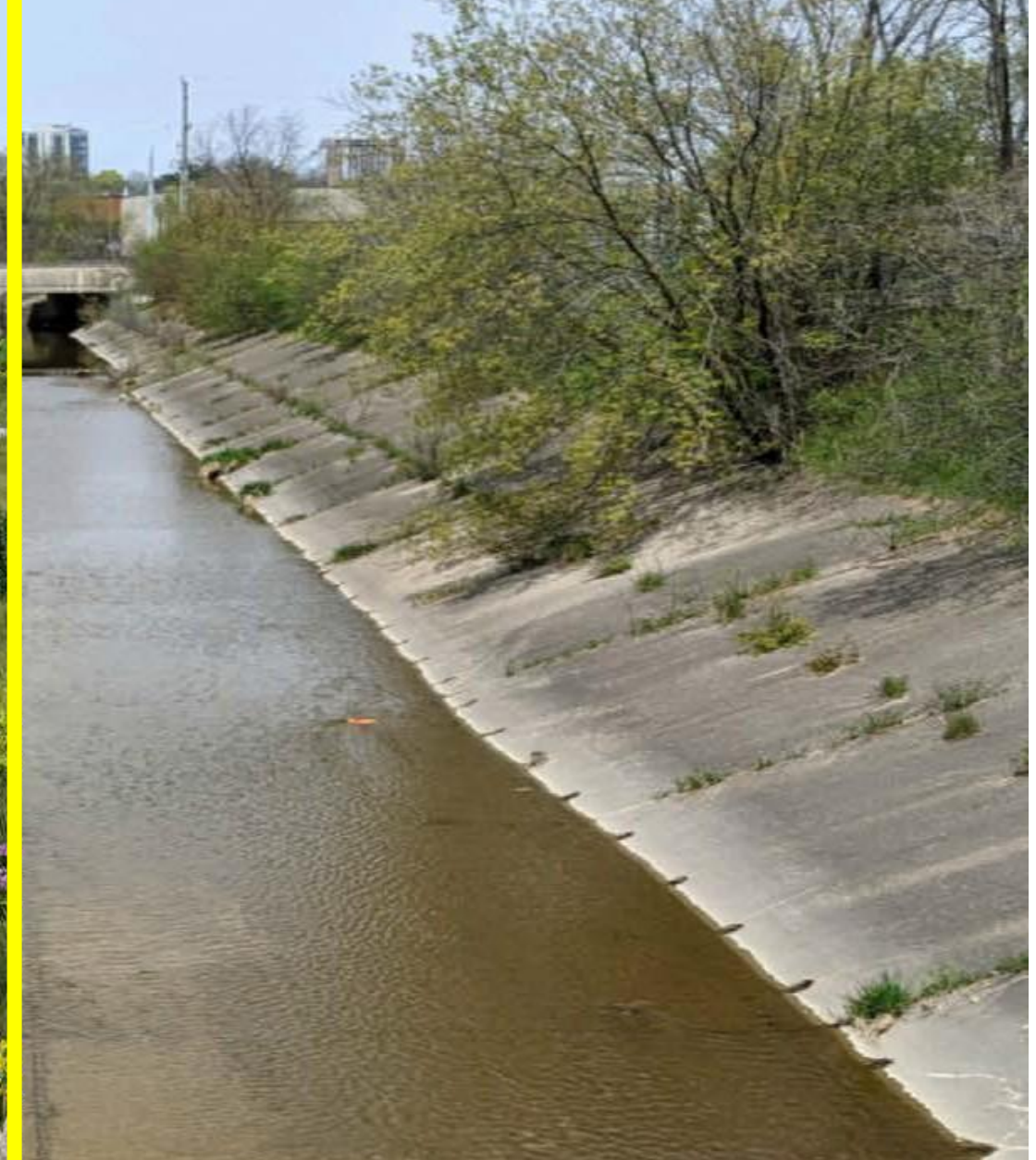
engage
KITCHENER
engagekitchener.ca

NOTICE OF PHOTOGRAPHY/VIDEOGRAPHY
This event will be recorded. Images and audio may be broadcast, reproduced and/or made available in print or online.
By attending this event, you are consenting to the use of your appearance, image and voice in promoting City of Kitchener programs and services.
Please contact if you have any questions. TEL: 519-893-6677
55 Wellington St. East

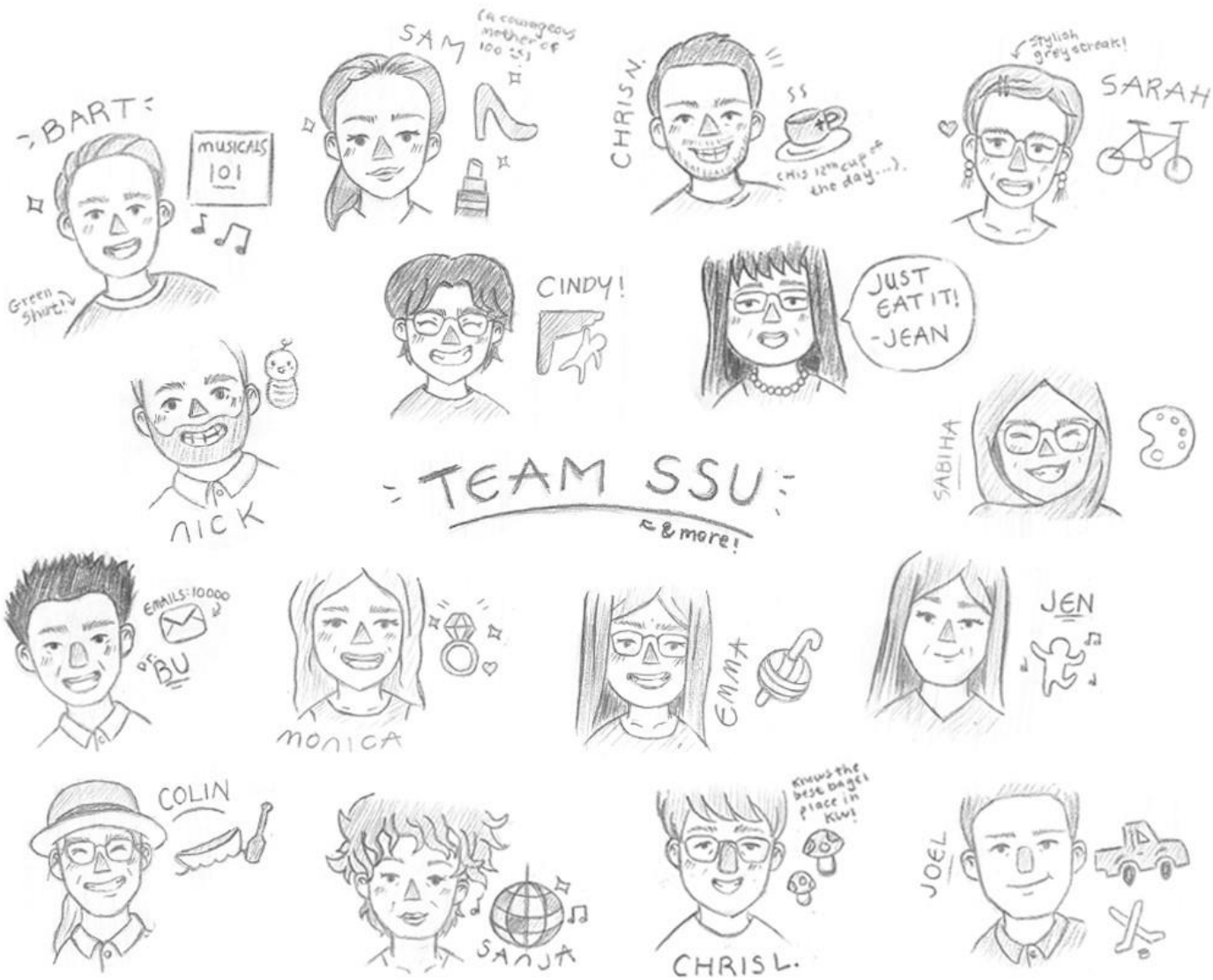








Shoemaker and Schneider Creek Project (2022 – 2028)



A scenic landscape featuring a calm pond in the foreground, reflecting the sky and surrounding trees. The pond is bordered by lush green grass and tall reeds on the left, and a rocky shoreline on the right. In the background, a dirt path winds through a grassy field, with several people walking. A large, leafy tree stands prominently in the middle ground, and a tall utility tower is visible in the distance under a clear blue sky.

Thank you!