

## SITE STATISTICS

Zoning- RES-5  
C of A Application-  
Lot Area- 6,127.0 m<sup>2</sup>  
Building Coverage- 1,171.5 m<sup>2</sup> (19.1 %)  
Landscaped Area- 1,754 m<sup>2</sup> (28.6 %)  
Asphalt / Hard Surface Area- 2,700 m<sup>2</sup> (44.1 %)

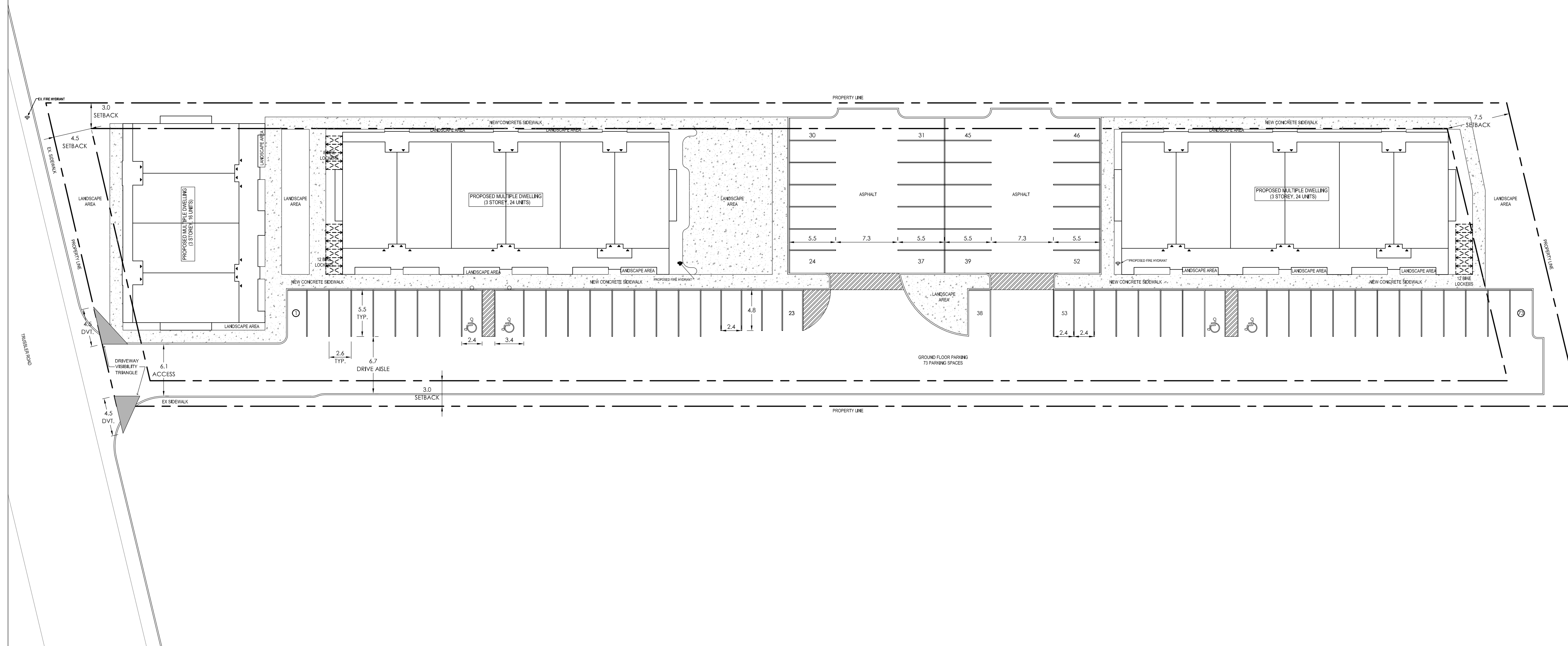
Parking Required- 64  
Residential  
- 1.0 per dwelling unit = 64  
Barrier Free  
- 2+ 2% of Total  
Required Parking = 4

Parking Provided- 73  
Residential  
- 1.14 per dwelling unit = 73  
Barrier Free Parking = 4

## MULTI-RESIDENTIAL

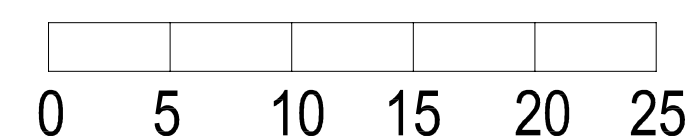
Number of Units-64  
Number of Visitor Spaces-  
Floor Space Ratio-0.57

NOTE: ALL ASPHALT AREAS TO BE  
DEFINED WITH 0.15M HIGH POURED  
CONCRETE CURBING



# SITE PLAN

60 TRUSSLER ROAD, KITCHENER, ON  
123



SCALE 1: 300

DATE: 2024-06-04

REVISED:

SITE PLAN APPLICATION No.

LEGAL DESCRIPTION

LT 208-209 PL 303 KITCHENER; PT LOT 207, 210 PL 303 KITCHENER AS IN 649292,  
SAVE & EXCEPT PT 3 ON WR768755; KITCHENER; SUBJECT TO AN EASEMENT AS IN 649292  
AND PT LT 210-211 PL 303 KITCHENER PT 1, 58R9569 and  
PLAN 303 PT LOTS 210 & 211 RP 58R9569 PART 1

**City of Kitchener**  
DEVELOPMENT SERVICES DEPARTMENT

CAD FILE:  
SP.DWG