



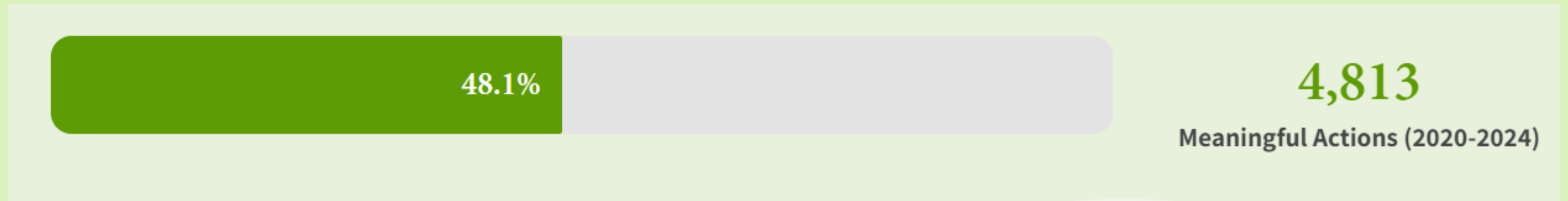
IMPACT REPORT 2023-2024



By 2030, Reep Green Solutions will have completed 10,000 actions that make our community stronger and more eco-friendly.

4,813

MEANINGFUL ACTIONS



Karin Dobbbs' Sustainability Journey

"Brendan, my advisor, understood what made sense to do in a 70-year-old house. He took care to understand what I wanted to do and provided guidance regarding how to approach the improvements needed."

32% reduction in energy costs

Last year, we visited 662 homes like Karin's.



English Conversation Circles



Helping newcomers understand energy use better by providing them with information on how to save energy





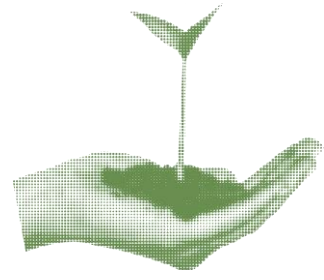
Water Conservation and Protection

Road salt is the Region of Waterloo's top water quality issue. Throughout the winter we met people at markets and events to provide them with practical tips on how to reduce your salt usage and alternatives to reach for first.



Region of Waterloo



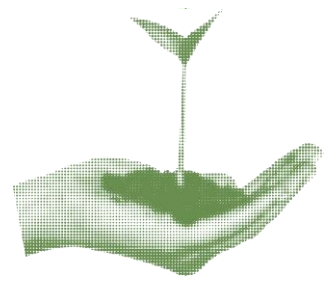


Healthy Yards & Neighbourhoods

724 Healthy Landscape features installed

"The increasing number of rain gardens in the city is helping people feel like they are making a positive impact on the climate crisis. These gardens also create green spaces that make our streets look nicer and feel cooler." - Guelph Resident



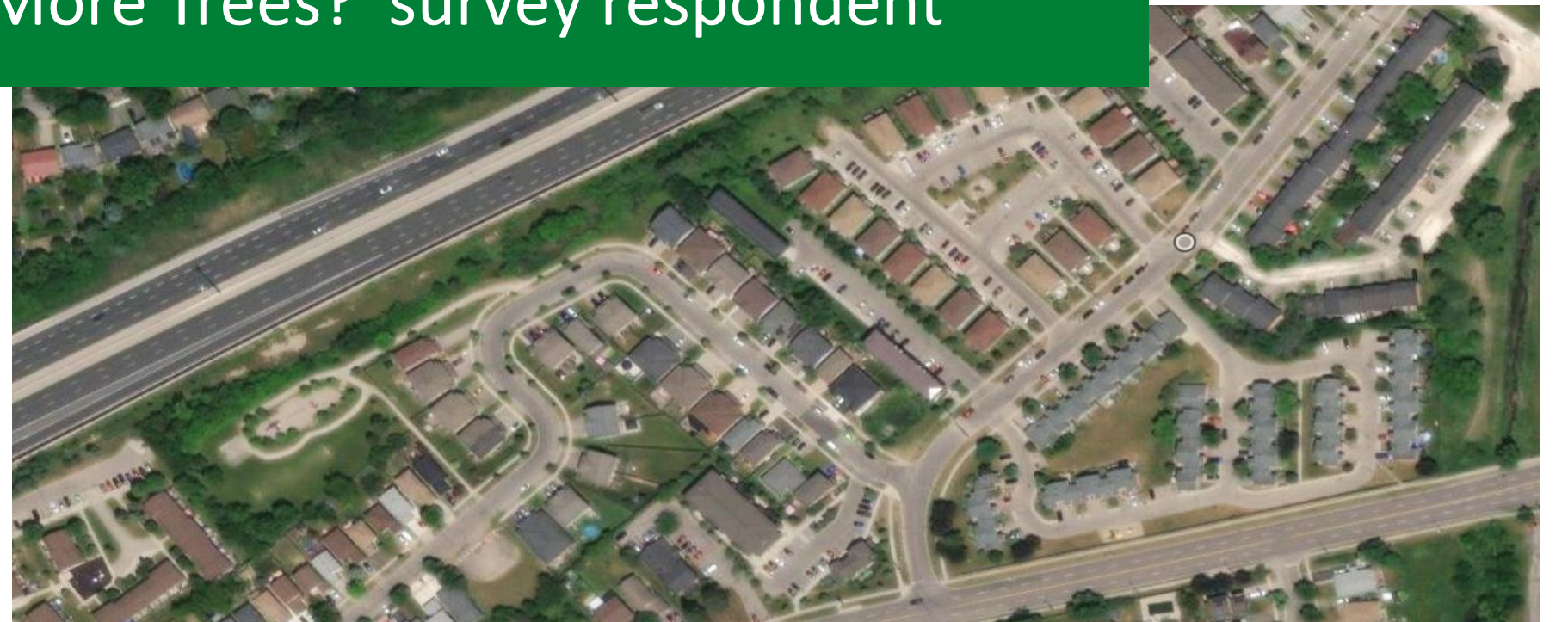


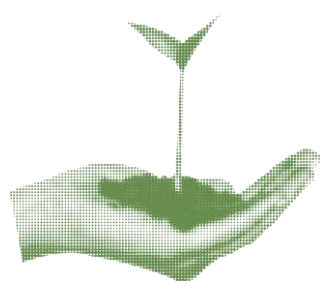
Community Canopy



"Plant trees near enough park structures to provide shade for kids and parents while they're there."

- 'Where Would You Like More Trees?' survey respondent





Tree Nursery: Future proofing

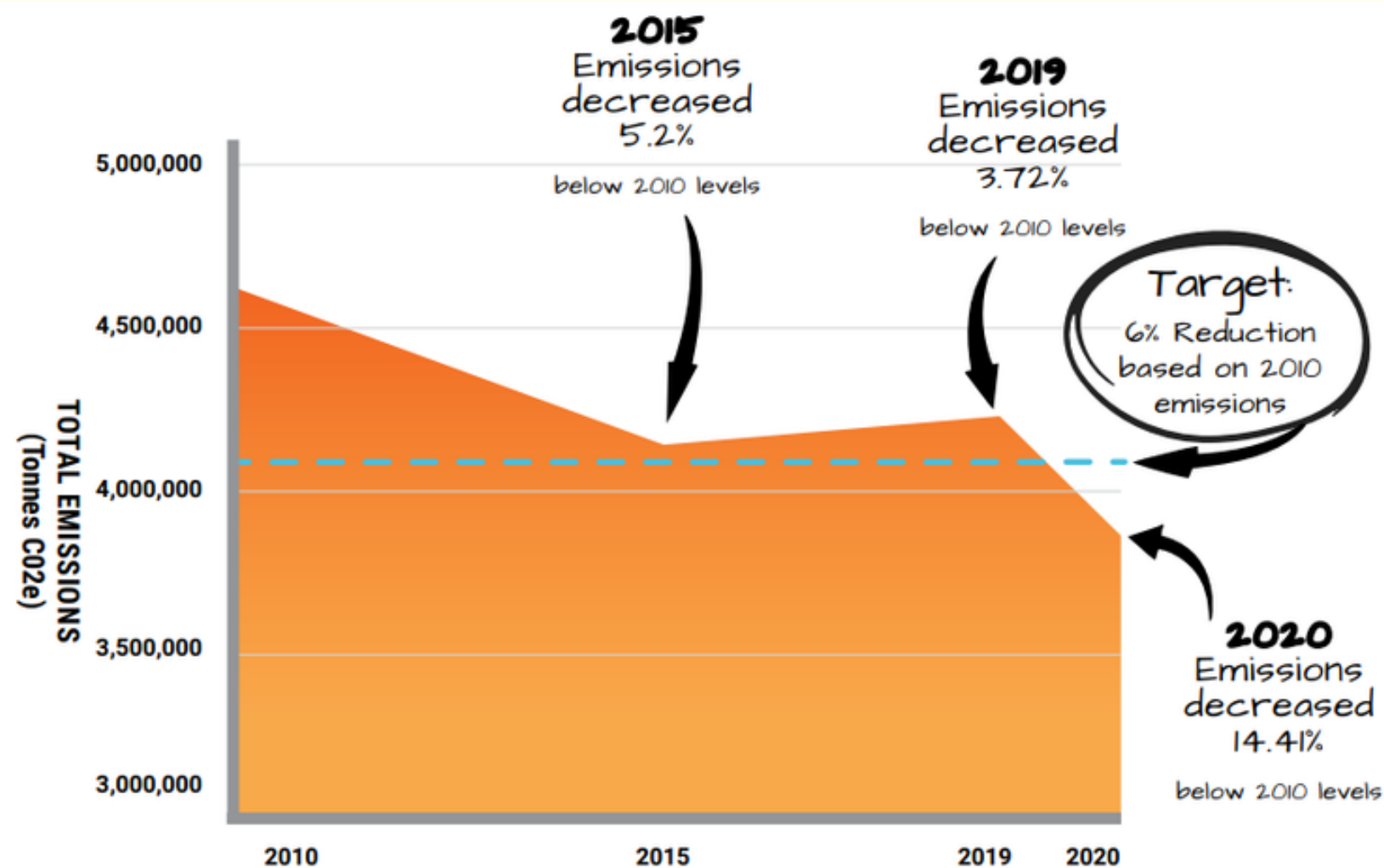


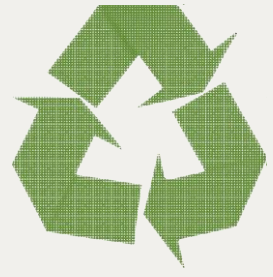
"Trees have always been incredibly awe-inspiring to me. Volunteering at the tree nursery has given me an opportunity to be part of that hope."

- Marie M

CLIMATE ACTION WR

ClimateActionWR is a team effort involving local organizations, community members, and cities in the Waterloo Region.





Zero Waste Challenge

"I want to become more conscious of my waste and minimize it. I want to figure out where I am producing the most waste."

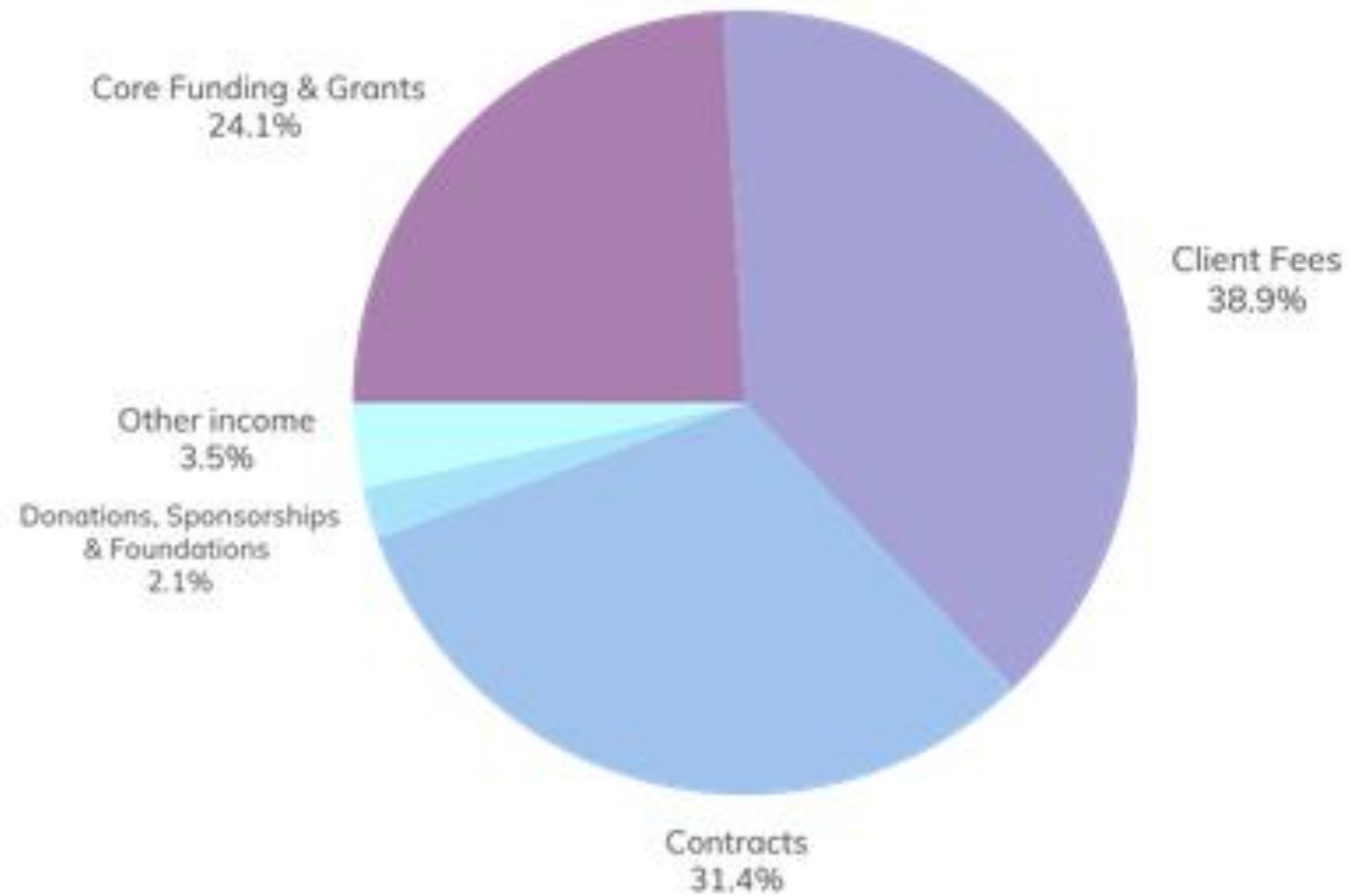
- A determined 30-day challenge participant

Register Now:
reepgreen.ca/zwc

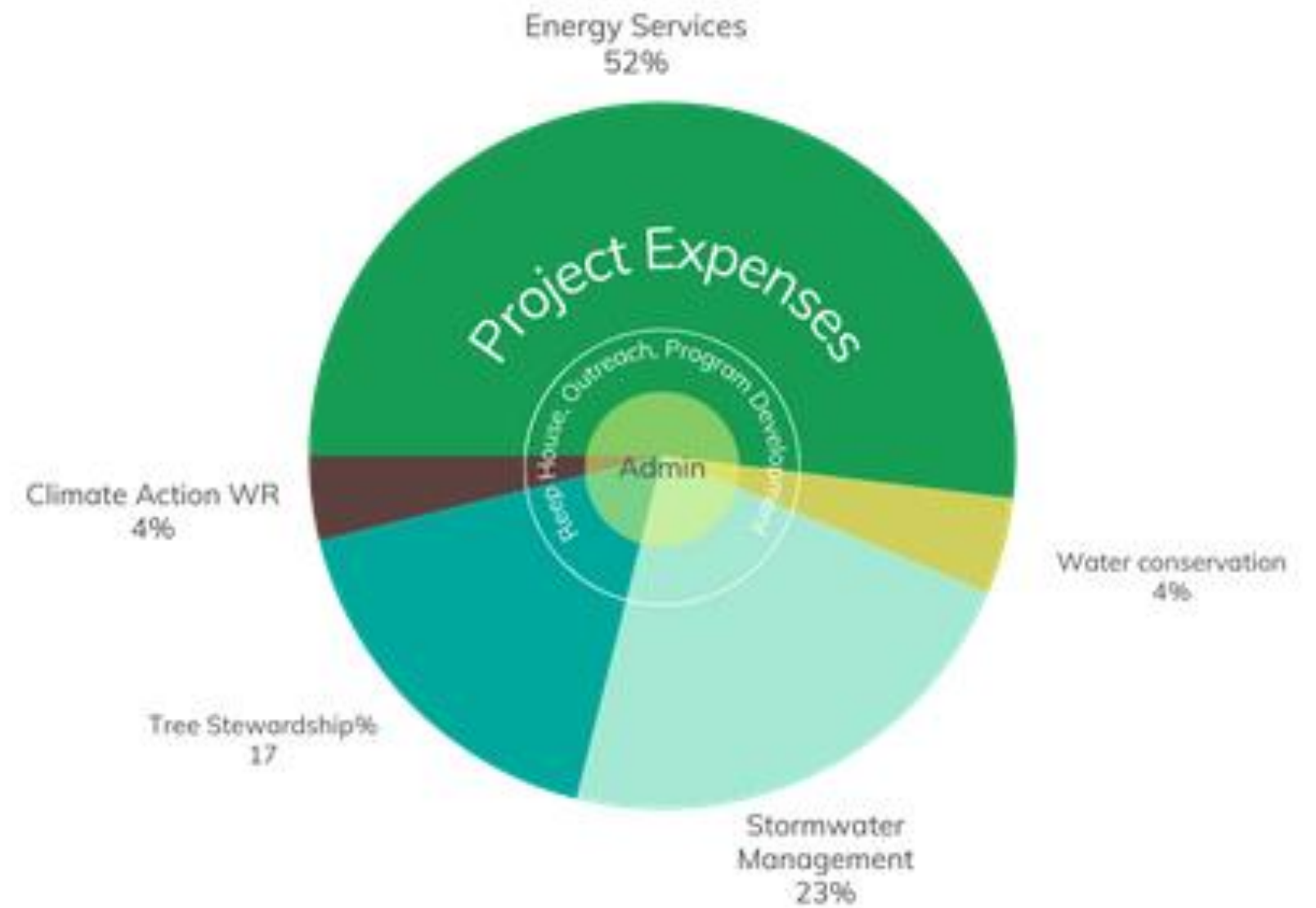


Financial Summary

Revenue



Expenses



**The size of Reep House, Outreach, Program Development and Admin circles are not represented proportionally relative to other expenses.*

Thank You to our Partners!
Core Funders
We couldn't do it without you!

