

# 2023 Update to the Community

Come sit with us!

**sustainable**  
WATERLOO ▸ REGION

**120+**  
SWR memberships

**40,000+**  
Full time employees supported

**19** Events held in  
**2023**

**700+**  
Attendees across events

For spending  
**18,000+**  
supporting us  
through the year,  
we thank our  
**amazing**  
**230+**  
volunteers!

**1800+**  
students impacted across  
**5** public schools

 **1042**  
Trees and  
shrubs  
planted in

**20** Municipalities **12** forests

**74,927.9**  
Tonnes Committed (CO<sub>2</sub>e)

**94,097.1**  
Tonnes Reduced to date (CO<sub>2</sub>e)

**THE  
COMMUNITY  
ENGAGED**

# TravelWise

# 12

Years of partnership



Region of Waterloo

# 40+

Organizations across  
Waterloo Region



# Microforest

**3**

Years

**20**

Forests

**1,816**

Trees planted

**5**

Municipalities in  
Waterloo Region



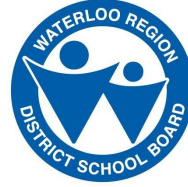
# Voisin Park Memorial microforest



## Eminidowang Kitigaan (Spirit Garden for Everyone)



# 5 School Plantings



# Microforest Financial Sponsors



Farm Mutual Re  
Collaborate. Empower. Succeed.



UNIVERSITY OF  
**WATERLOO**



# Microforest In-Kind Support



# Microforest Volunteer Organizations



# Climate Action

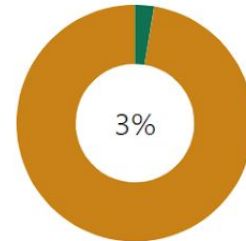


# TransformWR Progress Dashboard

The screenshot shows the TransformWR website interface. At the top, there is a navigation bar with 'Home', 'Transformative change', 'Actions', 'Indicators', and 'About'. A search icon is also present. The main content area features a large image of a city street with a text overlay that reads: 'TRANSFORMWR PROGRESS DASHBOARD. A ClimateActionWR Progress Reporting Tool For Waterloo Region. We are building a better future for our community through climate action and every business, organization, municipality and individual has a role to play! TransformWR is our community's climate action strategy and will help guide the community as we collectively do the work to transition Waterloo Region to a more equitable, prosperous, resilient low carbon community. Read more'. Below this, a section titled 'TRANSFORMATIVE CHANGES' lists three items: 1. ACTIVE TRANSPORTATION (with a bus image), 2. ZERO EMISSION VEHICLES (with a car image), and 3. FUEL SWITCHING OUR BUILDINGS (with a thermostat image).

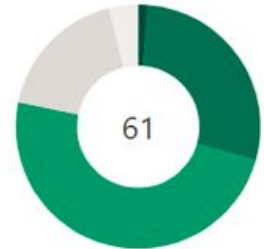
## ACTIVE ACTIONS LAST UPDATED

Actions that have been updated within the last 2 months



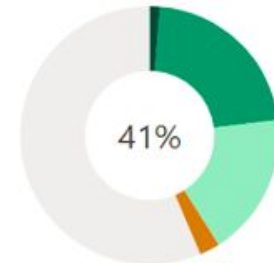
## ACTIONS BY PHASES

Continuous and completed actions

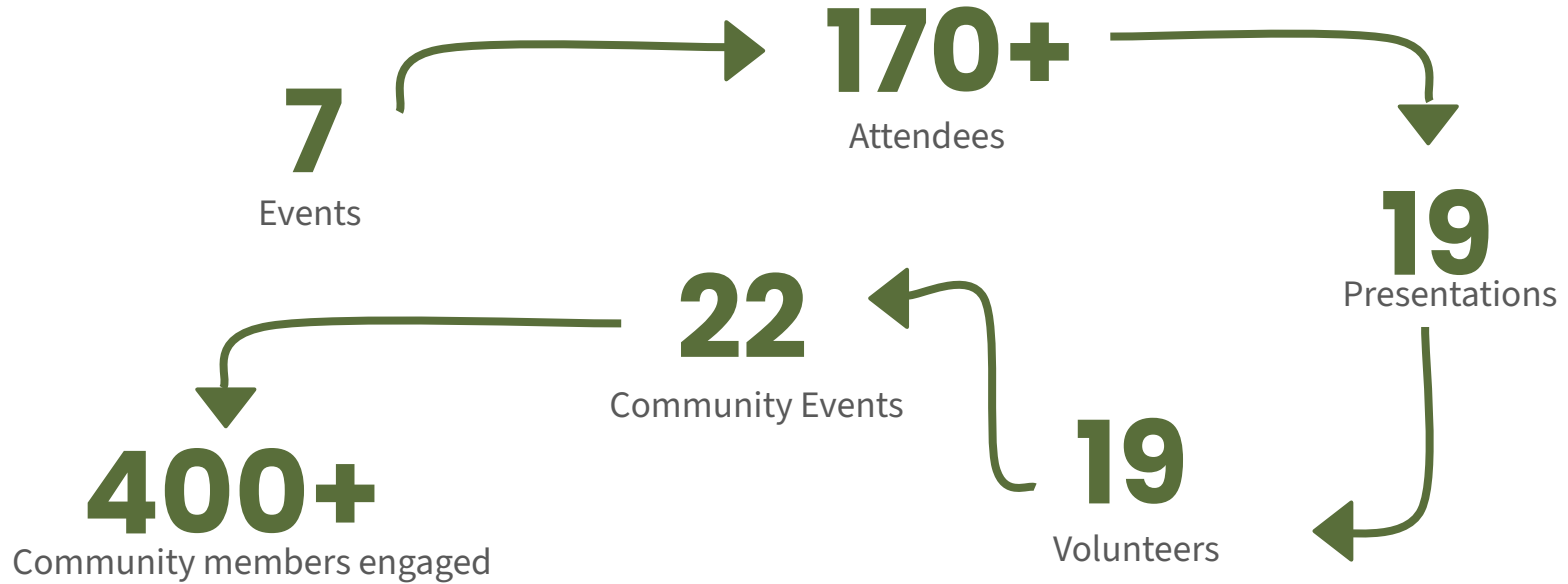


## ACTIONS BY STATUS

Actions proceeding as planned



# Acting collectively to build resilience.



# Impact Network

# impact netwo

## 74,927.9

Tonnes Committed (CO<sub>2</sub>e)

## 94,097.1

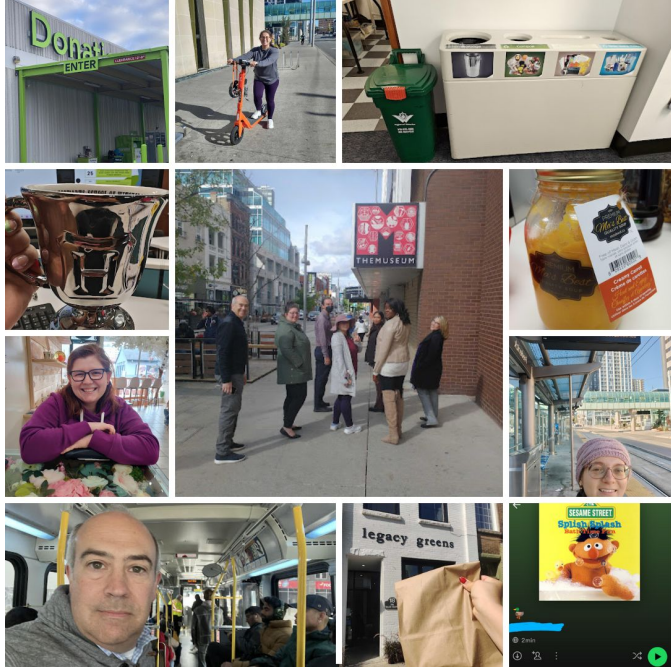
Tonnes Reduced to date  
(CO<sub>2</sub>e)

## 7,548.1

More tonnes reduced  
than 2022







42

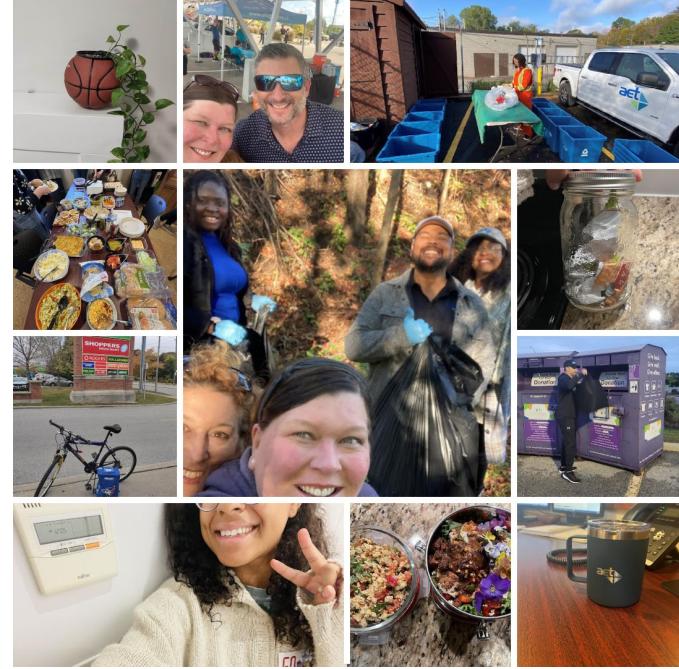
Uncooked meals

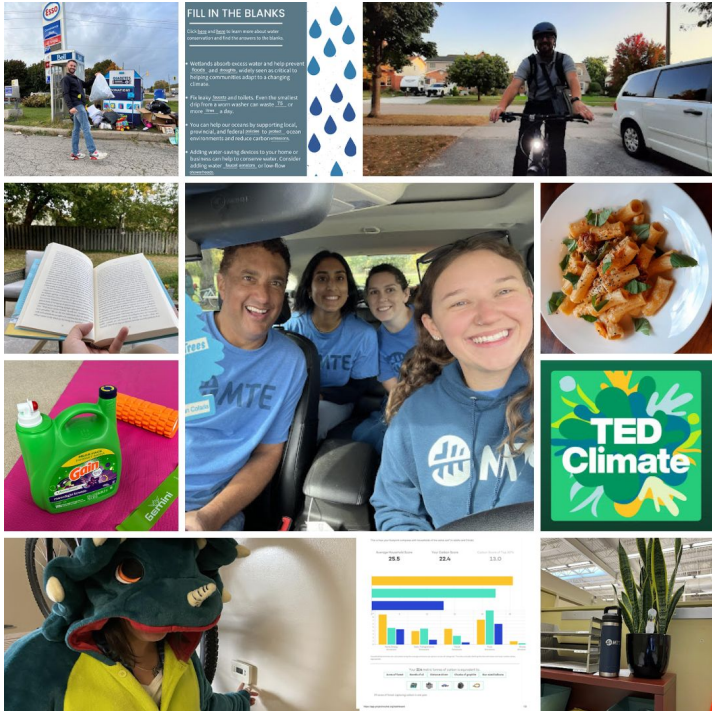
43

Shortest shower times

150,000

Steps counted





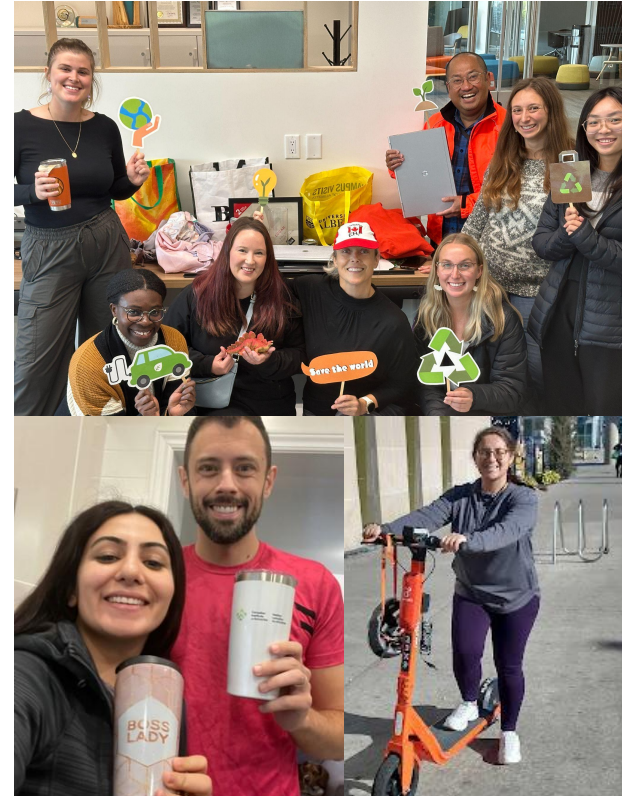
**20+**  
Lowered thermostats

**58**

Meatless meals

**10+**

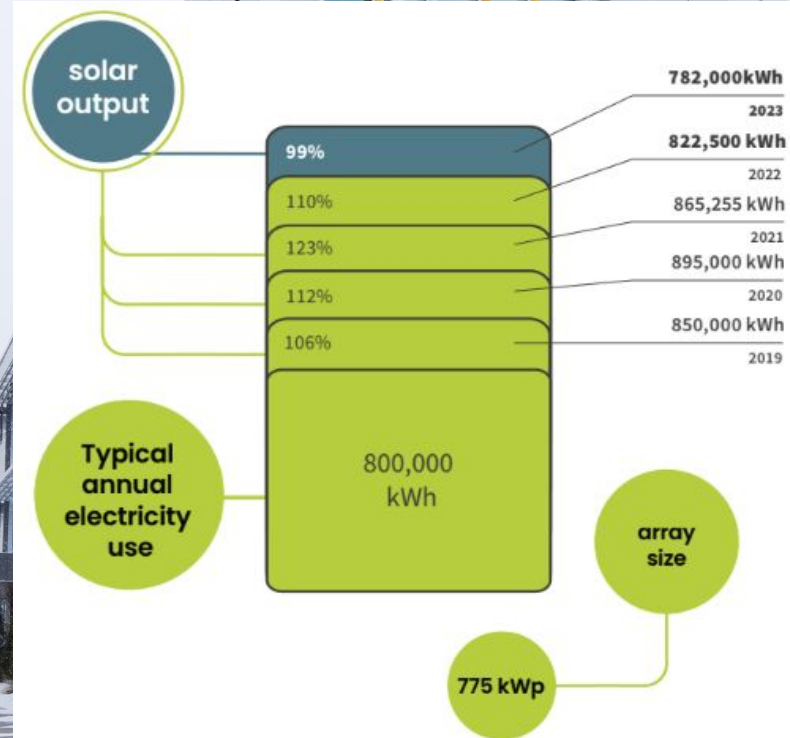
Sustainability Documentaries watched



# Evolv1

**10+**  
Building tours

**200+**  
Students Impacted



UNIVERSITY OF  
**WATERLOO**



**THE CORA GROUP**  
Developers & Managers of Commercial Real Estate

**evolv1**



# Sustainability in the news: featuring SWR

# WATERLOO REGION RECORD

By Catherine Thompson **Reporter**



# Seeds we are planting in 2024

**impact  
netwo**





# GROW WITH Cleantech

16-Week Training Program

POWERED BY:



FUNDED THROUGH:





Thank you for building our forest  
with us.