

# Biehn Drive EA

December 16, 2025 Council Presentation

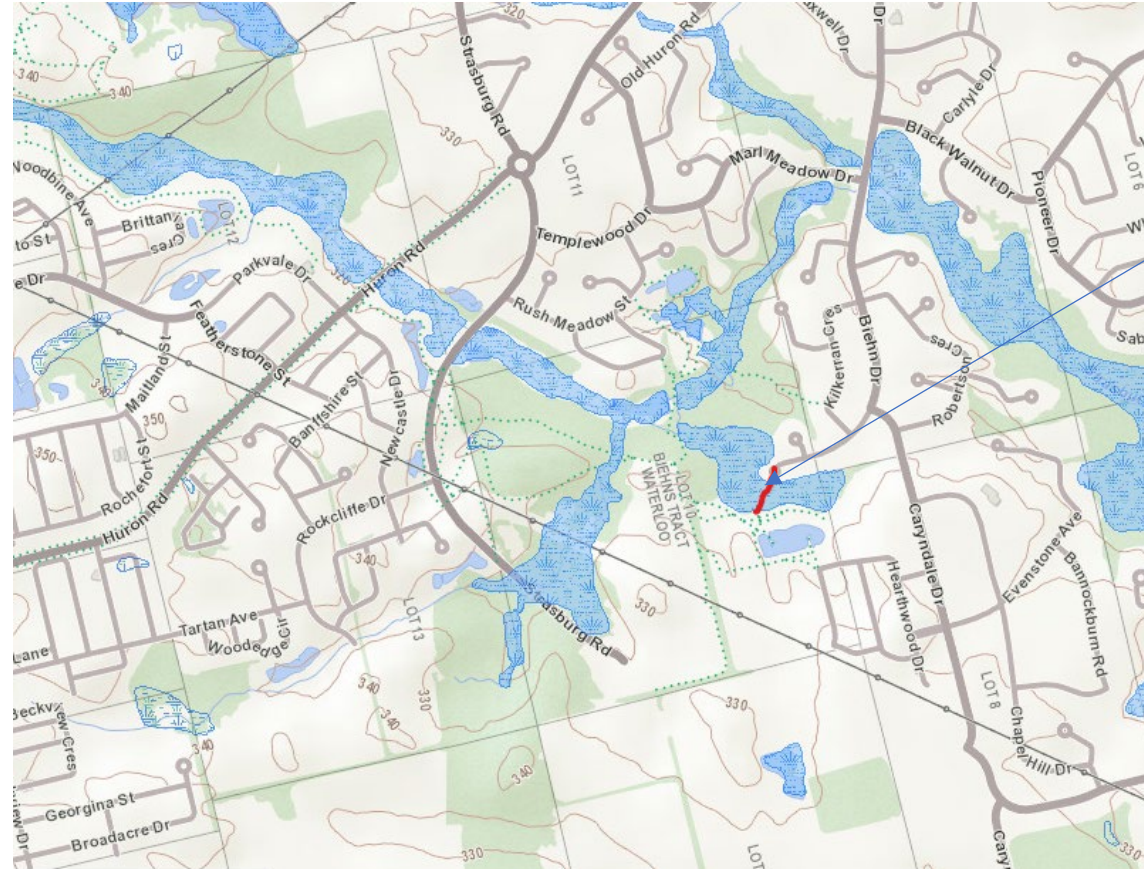
# Biehn Drive December 12, 2024

- Biehn Drive is in Ward 4, found to the south of Huron Road in the Bridgedoon neighborhood
- Biehn Drive, to its current terminus was constructed in 1986, much of this neighborhood was constructed in the same time frame
- Biehn was planned, designed, and built as a Major Collector Road (identified as such in our Official Plan)
- North/South traffic generated from outside of the immediate area currently uses Caryndale Drive
- Caryndale is classified as a Minor Collector Road
- Collector roads function connect local streets to arterial roads



# Overview of Strasburg Wetland Complex

- Overall complex is 1,300,000m<sup>2</sup>
- Made up of 8 components
- Components include open water, marsh, and swamp.
- Our specific component of the complex is 42,000m<sup>2</sup>
- Area of disturbance is 2,690m<sup>2</sup> for Biehn
- Area of immediate restoration is 3,828
- Net increase of 1,138m<sup>2</sup>
- The road is about 500m long and 120m of this is through the wetland



# Wetland Restoration

- Road alignment and cross-section reduce disturbance
- Road displaces 2690m<sup>2</sup> of wetland
- Area 1 = 1285m<sup>2</sup>
- Area 2 = 2543m<sup>2</sup>
- Both restoration areas are adjacent and connected to disturbed component

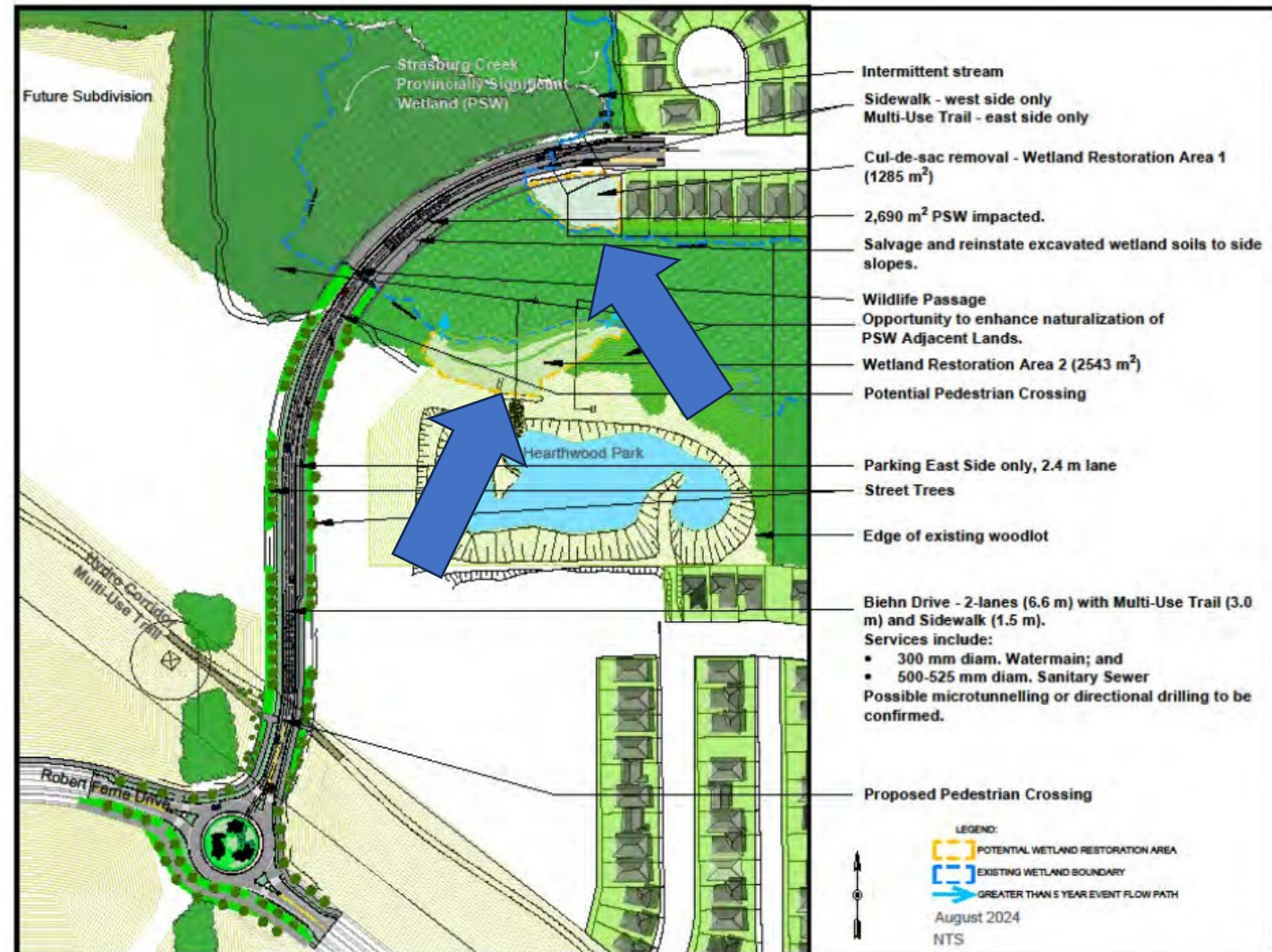
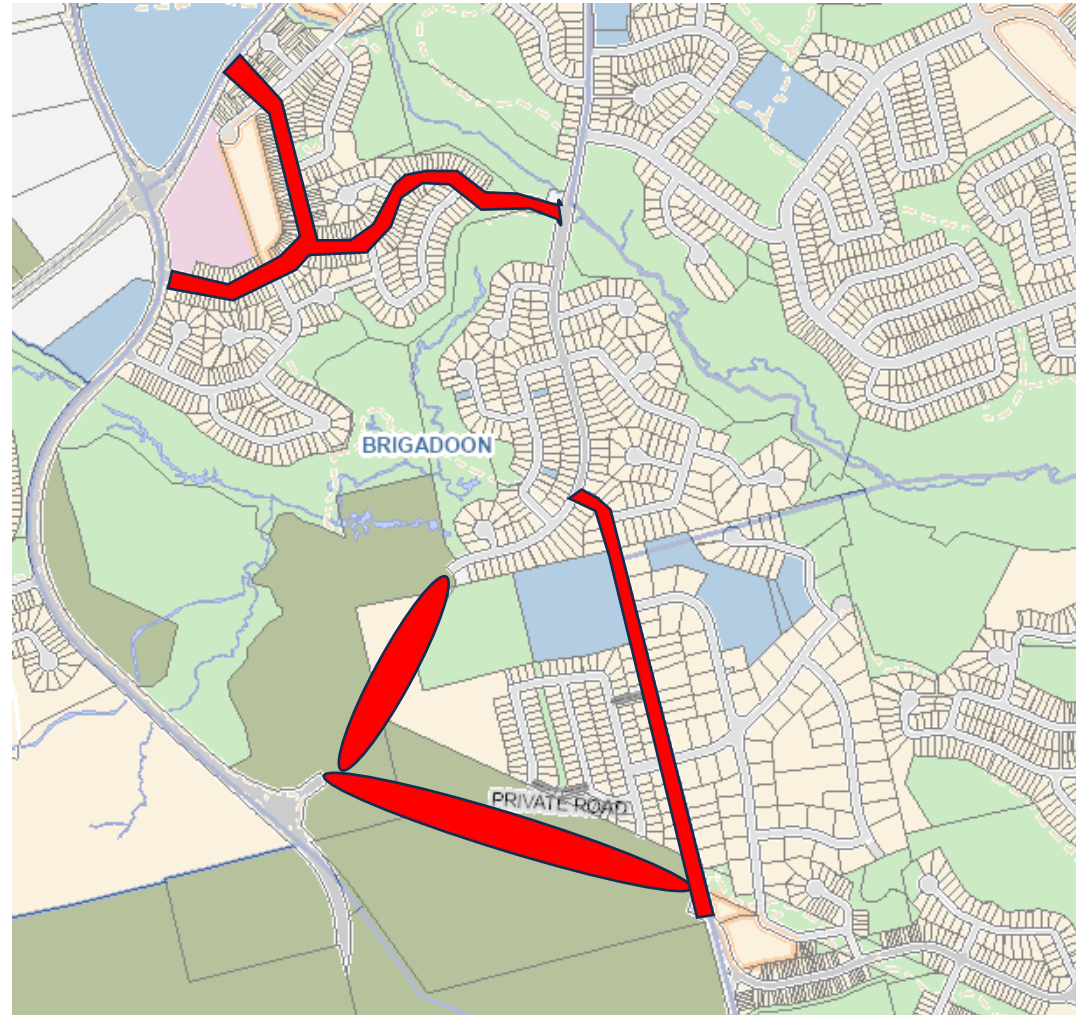


Figure 20: Recommended Plan

# Robert Ferrie Extension EA confirmation for the need for Biehn Drive

“The analysis confirms the extension of Biehn Drive is a necessary element of the Doon South and Brigadoon Communities. The analysis also confirms that failure to extend Biehn Drive represents a fundamental change to the planned collector road network and would result in the collector road network having insufficient capacity to service projected demands with potential and significant impacts to existing Biehn Drive, Caryndale Drive, as well as Templewood Drive/Marlmeadow Drive”



# Overall area included in the Transportation Study

- Transportation study looks at the larger area
- The latest update focused specifically on Biehn and the need for it

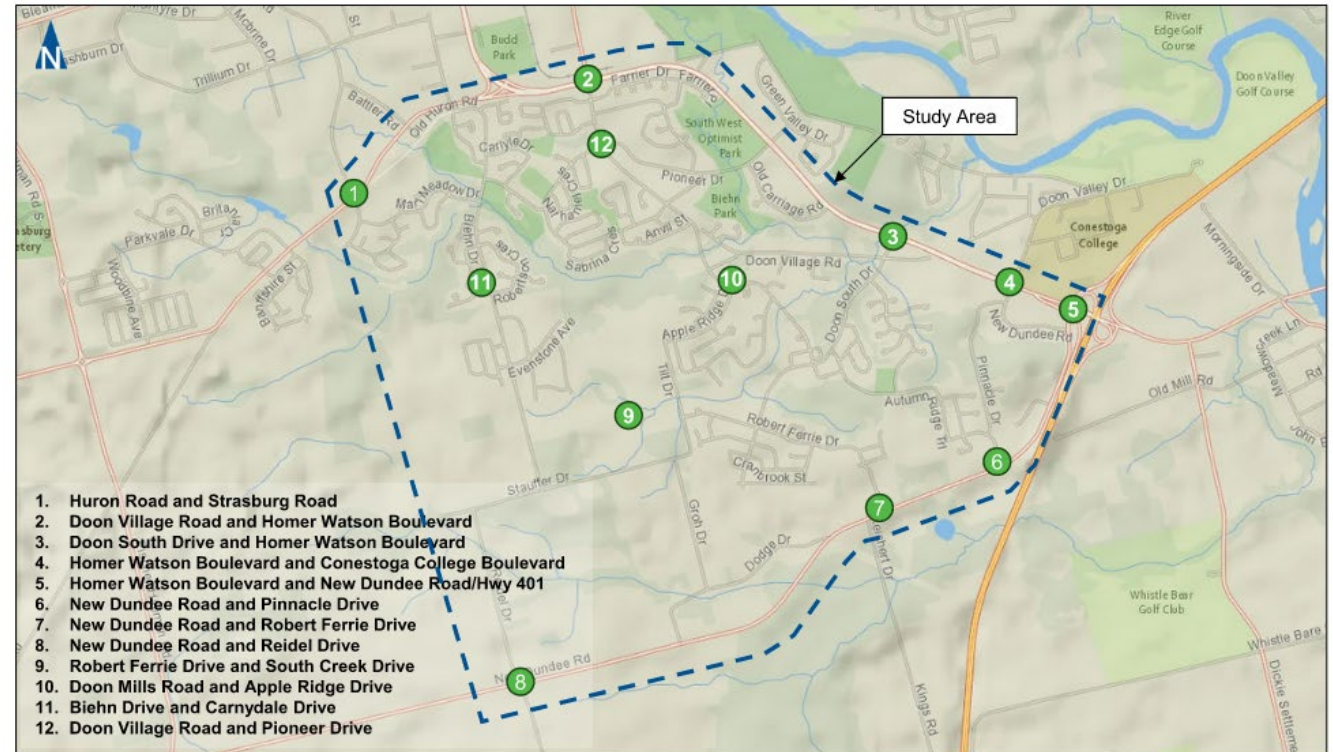


Image Source: National Geographic, Esri, Garmin, HERE, UNEP-WCMC, USGS, NASA, ESA, METI, NRCAN, GEBCO, NOAA, increment P Corp.



## Study Area and Study Intersections