

SITE STATISTICS-COMplete

Zoning- MU-3, 544R, 788R
 C of A Application- SP23/075/K/CD
 Lot Area- 6,492.2 m²
 Building Coverage- 3,668.7 m² (56.5%)
 Landscaped Area- 1,200.8 (18.5%)
 Asphalt / Hard Surface Area- 1,622.7 (25.0%)
 Parking Provided- 337
 Residential - 0.55 per dwelling unit = 285
 Visitor - 0.1 per dwelling unit = 52 Parking
 Barrier Free Parking = 10
 EV Parking = 66
 Space Minimum Dimensions- 2.6m x 5.5m

MULTI-RESIDENTIAL

Number of Units- 514
 Number of Visitor Spaces- 52
 Floor Space Ratio- 8.1
 Ground Floor Commercial Area: 336.0 m²
 BUILDING HEIGHT - 95.2 m (29 Storeys)
 Class A Bicycle parking- 0.5 per Unit = 257
 Class B Bicycle parking- 6

SITE STATISTICS-PHASE A

Zoning- MU-3, 544R, 788R
 C of A Application- SP23/075/K/CD
 Lot Area- 6,492.2 m²
 Building Coverage- 1943.8 m² (29.9%)
 Landscaped Area- 3612.7 (55.7%)
 Asphalt / Hard Surface Area- 935.5 (14.4%)
 Parking Provided- 154
 Residential - 0.58 per dwelling unit = 110
 Visitor = 43 Parking
 Barrier Free Parking = 3
 EV Parking = 35
 Space Minimum Dimensions- 2.6m x 5.5m

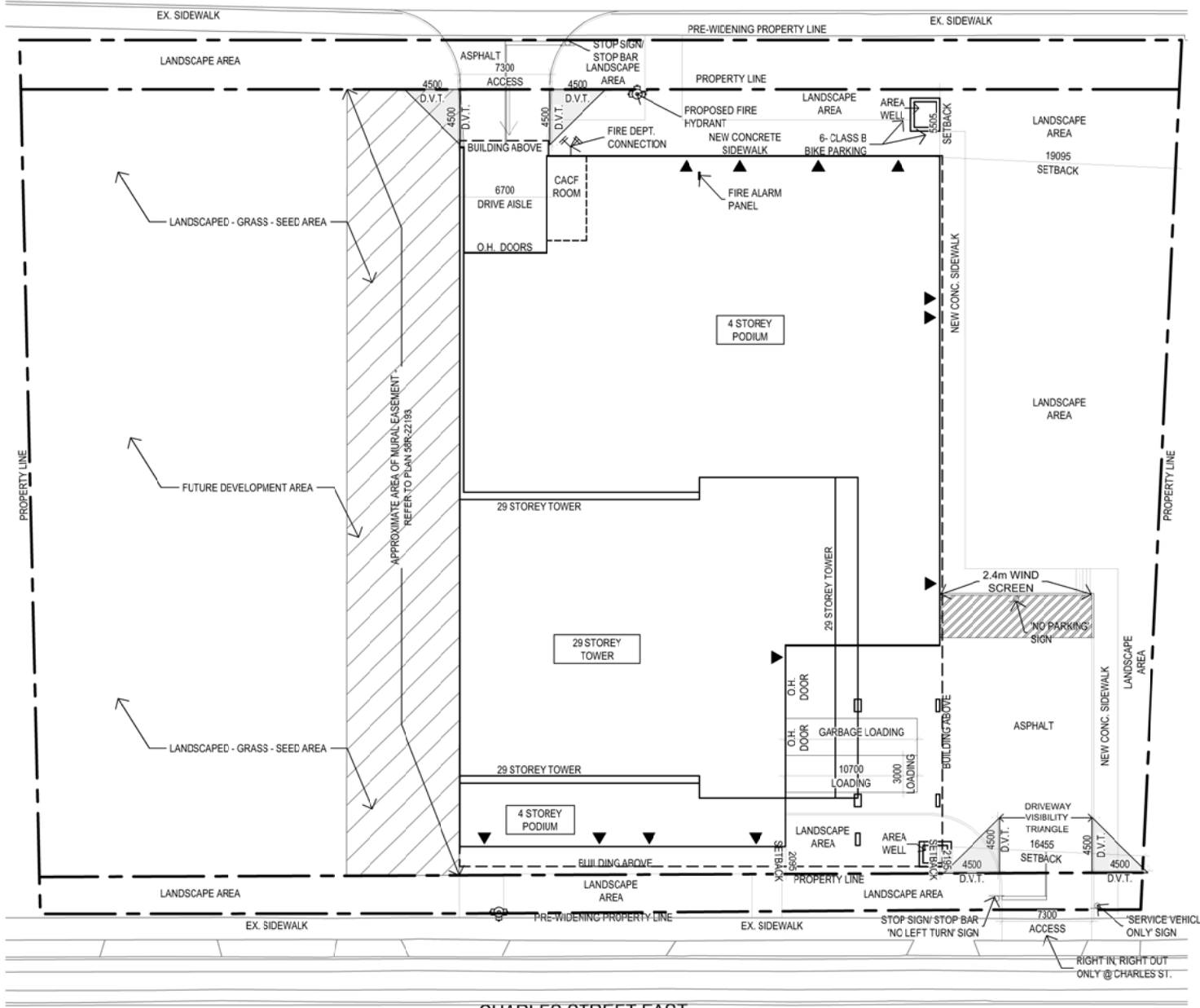
MULTI-RESIDENTIAL

Number of Units- 267
 Number of Visitor Spaces- 27
 Floor Space Ratio- 8.1
 Ground Floor Commercial Area: 227.9 m²
 BUILDING HEIGHT - 95.2 m (29 Storeys)
 Class A Bicycle parking- 0.5 per Unit = 134
 Class B Bicycle parking- 6

NOTE: ALL ASPHALT AREAS TO BE DEFINED WITH 0.15M HIGH POURED CONCRETE CURBING

UNDERGROUND PARKING - PHASE A 1001 KING STREET EAST "KING- CHARLES PROPERTIES (KITCHENER) LIMITED"		SITE PLAN APPLICATION No. SP23/075/K/CD <small>LOTS 24, 25, 26, 27, 28, 29 & 30 and PART OF LOTS 13, 14, 15, 16, 17, 18 & 19 REGISTERED PLAN 262 and PART OF PARK LOT 25 REGISTERED PLAN 404 and LOT 121 AND PART OF LOT 54 STREETS AND LANES</small>	City of Kitchener DEVELOPMENT SERVICES DEPARTMENT	CAD FILE: SP23075KCD.dwg
	SCALE 1: 500 DATE: October 24, 2023			

KING STREET EAST



SITE STATISTICS-COMplete

Zoning- MU-3, 544R, 788R
 C of A Application- SP23/075/K/CD
 Lot Area- 6,492.2 m²
 Building Coverage- 3,668.7 m² (56.5%)
 Landscaped Area- 1,200.8 (18.5%)
 Asphalt / Hard Surface Area- 1,622.7 (25.0%)
 Parking Provided- 337
 Residential - 0.55 per dwelling unit = 285
 Visitor - 0.1 per dwelling unit = 52 Parking
 Barrier Free Parking = 10
 EV Parking = 66
 Space Minimum Dimensions- 2.6m x 5.5m

MULTI-RESIDENTIAL

Number of Units- 514
 Number of Visitor Spaces- 52
 Floor Space Ratio- 8.1
 Ground Floor Commercial Area: 336.0 m²
 BUILDING HEIGHT - 95.2 m (29 Storeys)
 Class A Bicycle parking- 0.5 per Unit = 257
 Class B Bicycle parking- 6

SITE STATISTICS-PHASE A

Zoning- MU-3, 544R, 788R
 C of A Application- SP23/075/K/CD
 Lot Area- 6,492.2 m²
 Building Coverage- 1943.8 m² (29.9%)
 Landscaped Area- 3612.7 (55.7%)
 Asphalt / Hard Surface Area- 935.5 (14.4%)
 Parking Provided- 154
 Residential - 0.58 per dwelling unit = 110
 Visitor = 43 Parking
 Barrier Free Parking = 3
 EV Parking = 35
 Space Minimum Dimensions- 2.6m x 5.5m

MULTI-RESIDENTIAL

Number of Units- 267
 Number of Visitor Spaces- 27
 Floor Space Ratio- 8.1
 Ground Floor Commercial Area: 227.9 m²
 BUILDING HEIGHT - 95.2 m (29 Storeys)
 Class A Bicycle parking- 0.5 per Unit = 134
 Class B Bicycle parking- 6

NOTE: ALL ASPHALT AREAS TO BE DEFINED WITH 0.15M HIGH POURED CONCRETE CURBING

CHARLES STREET EAST

SITE PLAN - PHASE A

1001 KING STREET EAST

"KING- CHARLES PROPERTIES (KITCHENER) LIMITED"



SCALE 1: 500

DATE: October 24, 2023

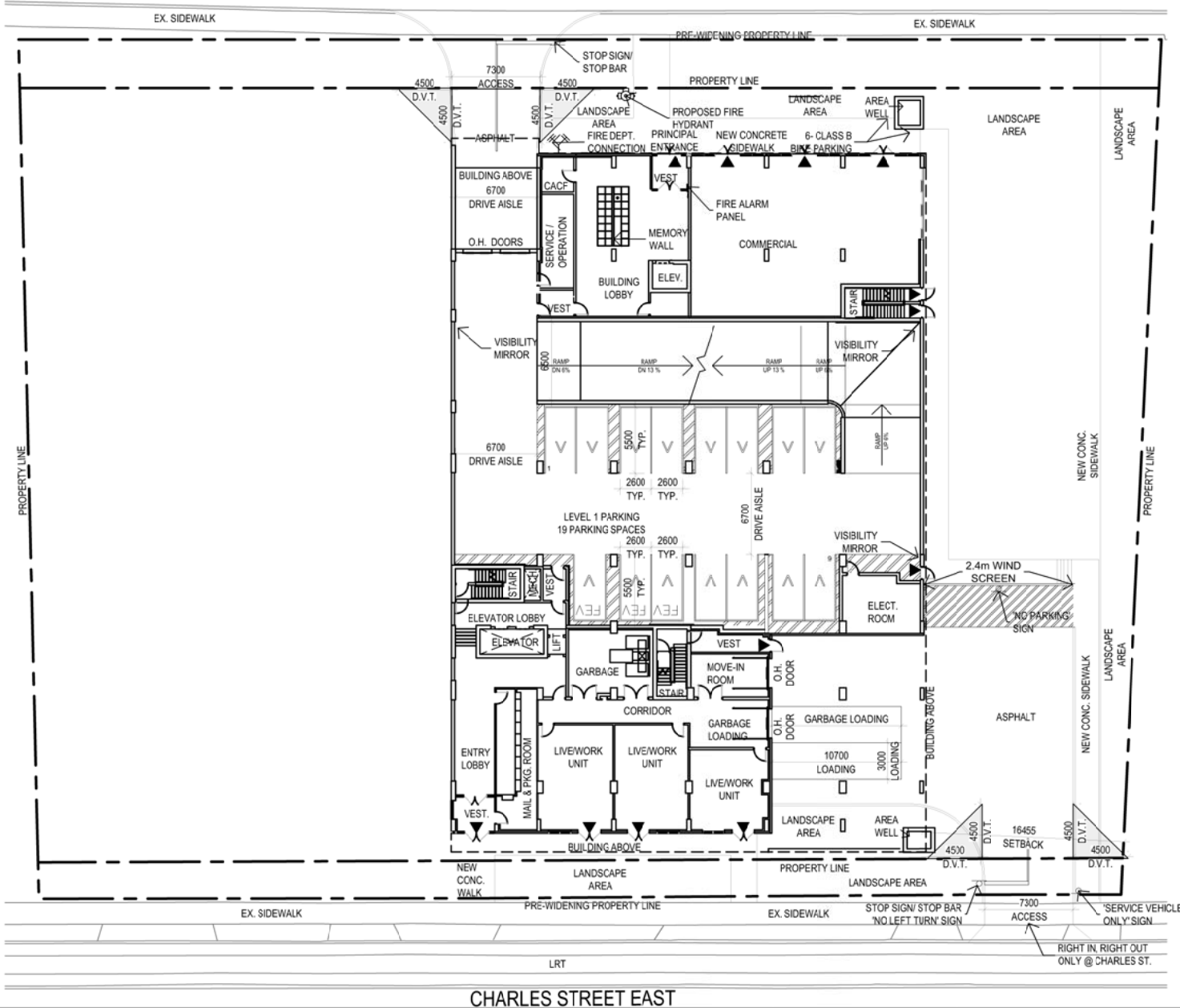
SITE PLAN APPLICATION No. SP23/075/K/CD

LOTS 24, 25, 26, 27, 28, 29 & 30 and PART OF LOTS 13, 14, 15, 16, 17, 18 & 19
 REGISTERED PLAN 262 and PART OF PARK LOT 25
 REGISTERED PLAN 404 and LOT 121 AND PART OF LOT 54 STREETS AND LANES

City of Kitchener
 DEVELOPMENT SERVICES DEPARTMENT

CAD FILE:
 SP23075KCD.dwg

KING STREET EAST



SITE STATISTICS-COMLETE

Zoning- MU-3, 544R, 788R
 C of A Application- SP23/075/K/CD
 Lot Area- 6,492.2 m²
 Building Coverage- 3,668.7 m² (56.5%)
 Landscaped Area- 1,200.8 (18.5 %)
 Asphalt / Hard Surface Area- 1,622.7 (25.0 %)
 Parking Provided- 337
 Residential - 0.55 per dwelling unit = 285
 Visitor - 0.1 per dwelling unit = 52 Parking
 Barrier Free Parking = 10
 EV Parking = 66
 Space Minimum Dimensions- 2.6m x 5.5m

MULTI-RESIDENTIAL

Number of Units- 514
 Number of Visitor Spaces- 52
 Floor Space Ratio- 8.1
 Ground Floor Commercial Area: 336.0 m²
 BUILDING HEIGHT - 95.2 m (29 Storeys)
 Class A Bicycle parking- 0.5 per Unit = 257
 Class B Bicycle parking- 6

SITE STATISTICS-PHASE A

Zoning- MU-3, 544R, 788R
 C of A Application- SP23/075/K/CD
 Lot Area- 6,492.2 m²
 Building Coverage- 1943.8 m² (29.9%)
 Landscaped Area- 3612.7 (55.7 %)
 Asphalt / Hard Surface Area- 935.5 (14.4 %)
 Parking Provided- 154
 Residential - 0.58 per dwelling unit = 110
 Visitor = 43 Parking
 Barrier Free Parking = 3
 EV Parking = 35
 Space Minimum Dimensions- 2.6m x 5.5m

MULTI-RESIDENTIAL

Number of Units- 267
 Number of Visitor Spaces- 27
 Floor Space Ratio- 8.1
 Ground Floor Commercial Area: 227.9 m²
 BUILDING HEIGHT - 95.2 m (29 Storeys)
 Class A Bicycle parking- 0.5 per Unit = 134
 Class B Bicycle parking- 6

NOTE: ALL ASPHALT AREAS TO BE DEFINED WITH 0.15M HIGH POURED CONCRETE CURBING

CHARLES STREET EAST

GROUND FLOOR - PHASE A

1001 KING STREET EAST

"KING- CHARLES PROPERTIES (KITCHENER) LIMITED"

0 5 10 15 20

SCALE 1: 500

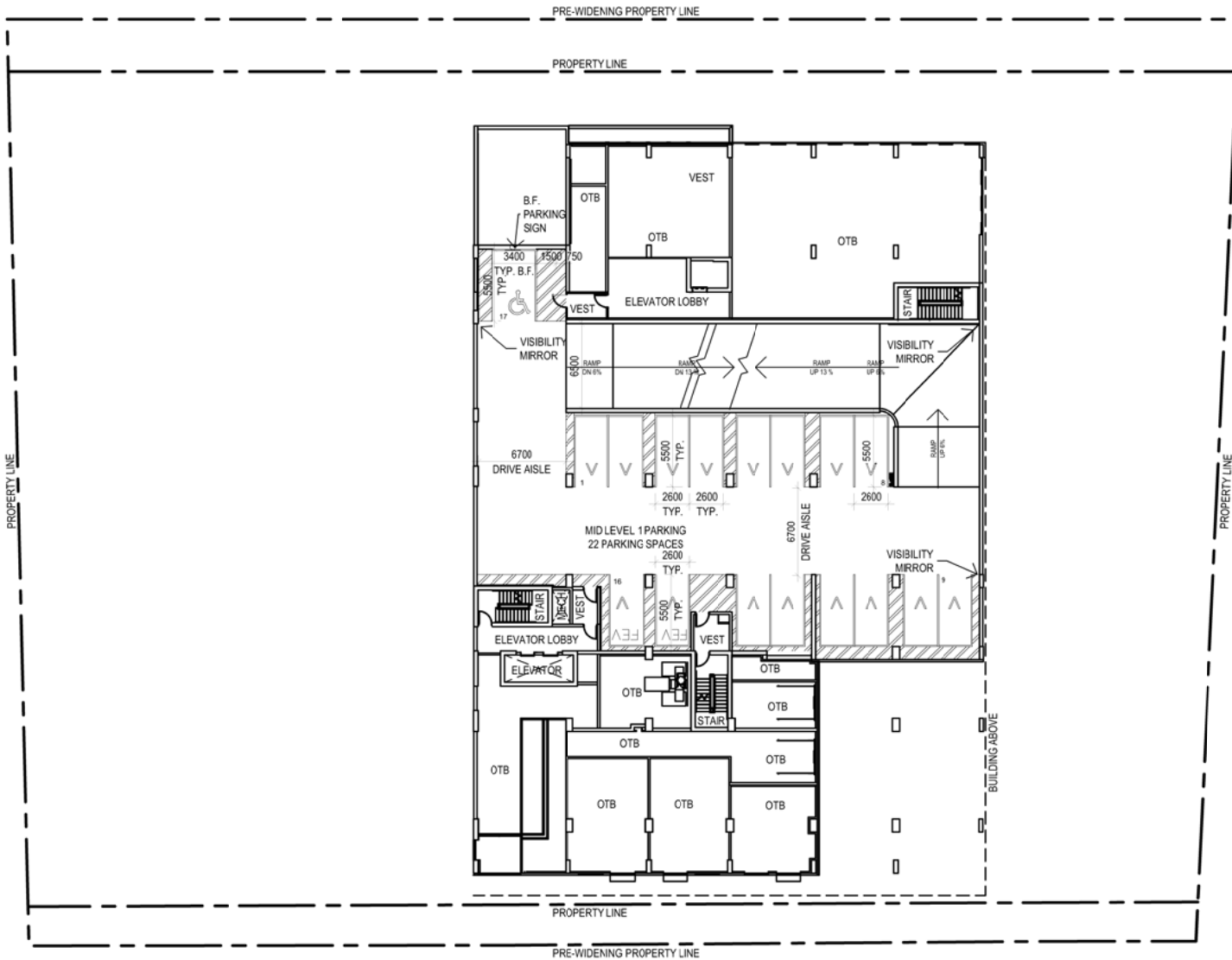
DATE: October 24, 2023

SITE PLAN APPLICATION No. SP23/075/K/CD

LOTS 24, 25, 26, 27, 28, 29 & 30 and PART OF LOTS 13, 14, 15, 16, 17, 18 & 19
 REGISTERED PLAN 262 and PART OF PARK LOT 25
 REGISTERED PLAN 404 and LOT 121 AND PART OF LOT 54 STREETS AND LANES

City of Kitchener
 DEVELOPMENT SERVICES DEPARTMENT

CAD FILE:
 SP23075KCD.dwg



SITE STATISTICS-COMplete
 Zoning- MU-3, 544R, 788R
 C of A Application- SP23/075/K/CD
 Lot Area- 6,492.2 m²
 Building Coverage- 3,668.7 m² (56.5%)
 Landscaped Area- 1,200.8 (18.5 %)
 Asphalt / Hard Surface Area- 1,622.7 (25.0 %)
 Parking Provided- 337
 Residential - 0.55 per dwelling unit = 285
 Visitor - 0.1 per dwelling unit = 52 Parking
 Barrier Free Parking = 10
 EV Parking = 66
 Space Minimum Dimensions- 2.6m x 5.5m

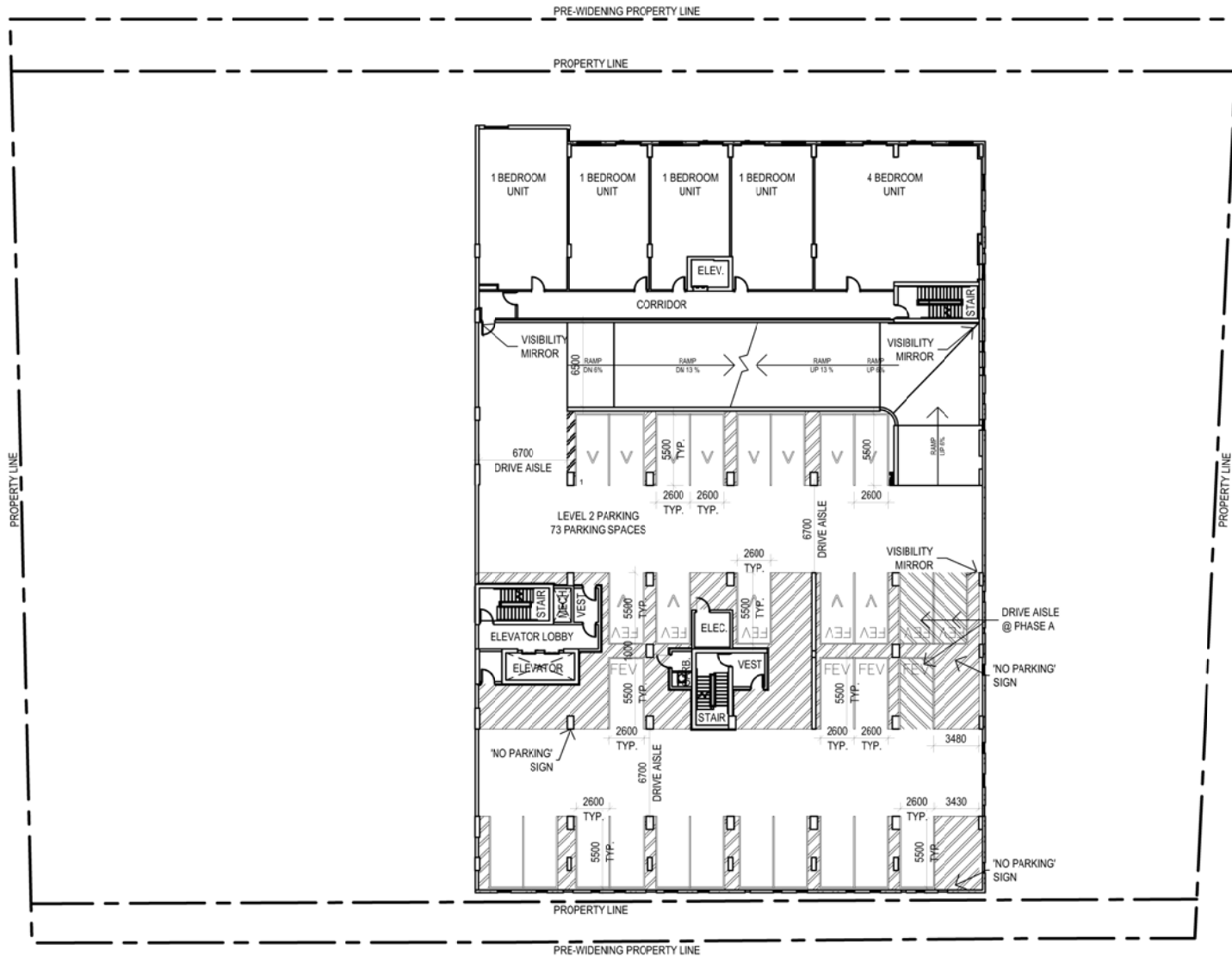
MULTI-RESIDENTIAL
 Number of Units- 514
 Number of Visitor Spaces- 52
 Floor Space Ratio- 8.1
 Ground Floor Commercial Area: 336.0 m²
 BUILDING HEIGHT - 95.2 m (29 Storeys)
 Class A Bicycle parking- 0.5 per Unit = 257
 Class B Bicycle parking- 6

SITE STATISTICS-PHASE A
 Zoning- MU-3, 544R, 788R
 C of A Application- SP23/075/K/CD
 Lot Area- 6,492.2 m²
 Building Coverage- 1943.8 m² (29.9%)
 Landscaped Area- 3612.7 (55.7 %)
 Asphalt / Hard Surface Area- 935.5 (14.4 %)
 Parking Provided- 154
 Residential - 0.58 per dwelling unit = 110
 Visitor = 43 Parking
 Barrier Free Parking = 3
 EV Parking = 35
 Space Minimum Dimensions- 2.6m x 5.5m

MULTI-RESIDENTIAL
 Number of Units- 267
 Number of Visitor Spaces- 27
 Floor Space Ratio- 8.1
 Ground Floor Commercial Area: 227.9 m²
 BUILDING HEIGHT - 95.2 m (29 Storeys)
 Class A Bicycle parking- 0.5 per Unit = 134
 Class B Bicycle parking- 6

NOTE: ALL ASPHALT AREAS TO BE DEFINED WITH 0.15M HIGH POURED CONCRETE CURBING

GROUND FLOOR + 3m - PHASE A	0 5 10 15 20	SITE PLAN APPLICATION No. SP23/075/K/CD <small>LOTS 24, 25, 26, 27, 28, 29 & 30 and PART OF LOTS 13, 14, 15, 16, 17, 18 & 19 REGISTERED PLAN 262 and PART OF PARK LOT 25 REGISTERED PLAN 404 and LOT 121 AND PART OF LOT 54 STREETS AND LANES</small>	City of Kitchener DEVELOPMENT SERVICES DEPARTMENT	CAD FILE: SP23075KCD.dwg
	SCALE 1: 500			
1001 KING STREET EAST	DATE: October 24, 2023			
"KING- CHARLES PROPERTIES (KITCHENER) LIMITED"				



SITE STATISTICS-COMplete

Zoning- MU-3, 544R, 788R
 C of A Application- SP23/075/K/CD
 Lot Area- 6,492.2 m²
 Building Coverage- 3,668.7 m² (56.5%)
 Landscaped Area- 1,200.8 (18.5 %)
 Asphalt / Hard Surface Area- 1,622.7 (25.0 %)
 Parking Provided- 337
 Residential - 0.55 per dwelling unit = 285
 Visitor - 0.1 per dwelling unit = 52 Parking
 Barrier Free Parking = 10
 EV Parking = 66
 Space Minimum Dimensions- 2.6m x 5.5m

MULTI-RESIDENTIAL

Number of Units- 514
 Number of Visitor Spaces- 52
 Floor Space Ratio- 8.1
 Ground Floor Commercial Area: 336.0 m²
 BUILDING HEIGHT - 95.2 m (29 Storeys)
 Class A Bicycle parking- 0.5 per Unit = 257
 Class B Bicycle parking- 6

SITE STATISTICS-PHASE A

Zoning- MU-3, 544R, 788R
 C of A Application- SP23/075/K/CD
 Lot Area- 6,492.2 m²
 Building Coverage- 1943.8 m² (29.9%)
 Landscaped Area- 3612.7 (55.7 %)
 Asphalt / Hard Surface Area- 935.5 (14.4 %)
 Parking Provided- 154
 Residential - 0.58 per dwelling unit = 110
 Visitor = 43 Parking
 Barrier Free Parking = 3
 EV Parking = 35
 Space Minimum Dimensions- 2.6m x 5.5m

MULTI-RESIDENTIAL

Number of Units- 267
 Number of Visitor Spaces- 27
 Floor Space Ratio- 8.1
 Ground Floor Commercial Area: 227.9 m²
 BUILDING HEIGHT - 95.2 m (29 Storeys)
 Class A Bicycle parking- 0.5 per Unit = 134
 Class B Bicycle parking- 6

NOTE: ALL ASPHALT AREAS TO BE DEFINED WITH 0.15M HIGH POURED CONCRETE CURBING

PODIUM LEVEL 2 - PHASE A

1001 KING STREET EAST

"KING- CHARLES PROPERTIES (KITCHENER) LIMITED"



SCALE 1: 500

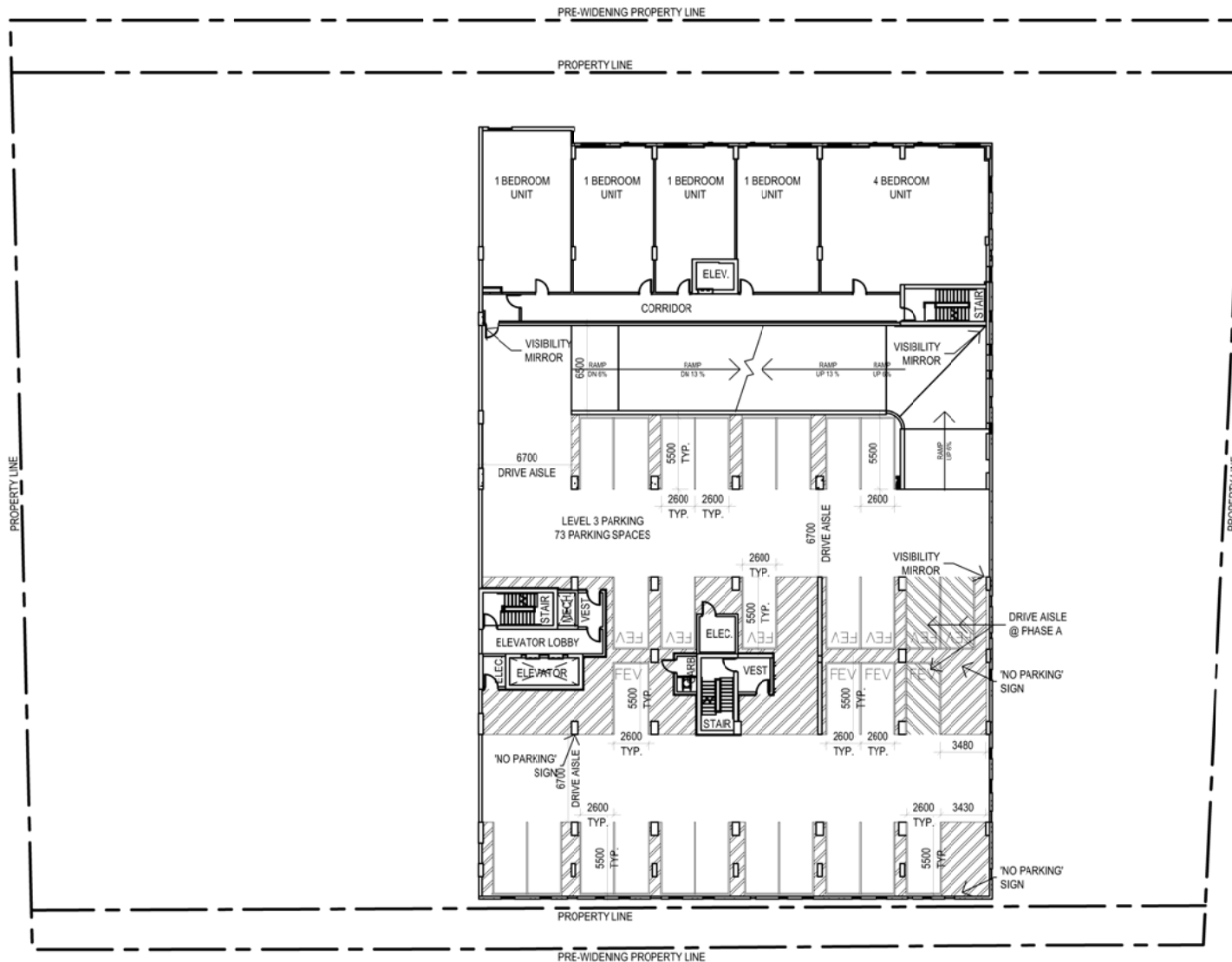
DATE: October 24, 2023

SITE PLAN APPLICATION No. SP23/075/K/CD

LOTS 24, 25, 26, 27, 28, 29 & 30 and PART OF LOTS 13, 14, 15, 16, 17, 18 & 19
 REGISTERED PLAN 262 and PART OF PARK LOT 25
 REGISTERED PLAN 404 and LOT 121 AND PART OF LOT 54 STREETS AND LANES

City of Kitchener
 DEVELOPMENT SERVICES DEPARTMENT

CAD FILE:
 SP23075KCD.dwg



SITE STATISTICS-COMLETE

Zoning- MU-3, 544R, 788R
 C of A Application- SP23/075/K/CD
 Lot Area- 6,492.2 m²
 Building Coverage- 3,668.7 m² (56.5%)
 Landscaped Area- 1,200.8 (18.5%)
 Asphalt / Hard Surface Area- 1,622.7 (25.0%)
 Parking Provided- 337
 Residential - 0.55 per dwelling unit = 285
 Visitor - 0.1 per dwelling unit = 52 Parking
 Barrier Free Parking = 10
 EV Parking = 66
 Space Minimum Dimensions- 2.6m x 5.5m

MULTI-RESIDENTIAL

Number of Units- 514
 Number of Visitor Spaces- 52
 Floor Space Ratio- 8.1
 Ground Floor Commercial Area: 336.0 m²
 BUILDING HEIGHT - 95.2 m (29 Storeys)
 Class A Bicycle parking- 0.5 per Unit = 257
 Class B Bicycle parking- 6

SITE STATISTICS-PHASE A

Zoning- MU-3, 544R, 788R
 C of A Application- SP23/075/K/CD
 Lot Area- 6,492.2 m²
 Building Coverage- 1943.8 m² (29.9%)
 Landscaped Area- 3612.7 (55.7%)
 Asphalt / Hard Surface Area- 935.5 (14.4%)
 Parking Provided- 154
 Residential - 0.58 per dwelling unit = 110
 Visitor = 43 Parking
 Barrier Free Parking = 3
 EV Parking = 35
 Space Minimum Dimensions- 2.6m x 5.5m

MULTI-RESIDENTIAL

Number of Units- 267
 Number of Visitor Spaces- 27
 Floor Space Ratio- 8.1
 Ground Floor Commercial Area: 227.9 m²
 BUILDING HEIGHT - 95.2 m (29 Storeys)
 Class A Bicycle parking- 0.5 per Unit = 134
 Class B Bicycle parking- 6

NOTE: ALL ASPHALT AREAS TO BE DEFINED WITH 0.15M HIGH POURED CONCRETE CURBING

PODIUM LEVEL 3 - PHASE A

1001 KING STREET EAST

"KING- CHARLES PROPERTIES (KITCHENER) LIMITED"



SCALE 1: 500

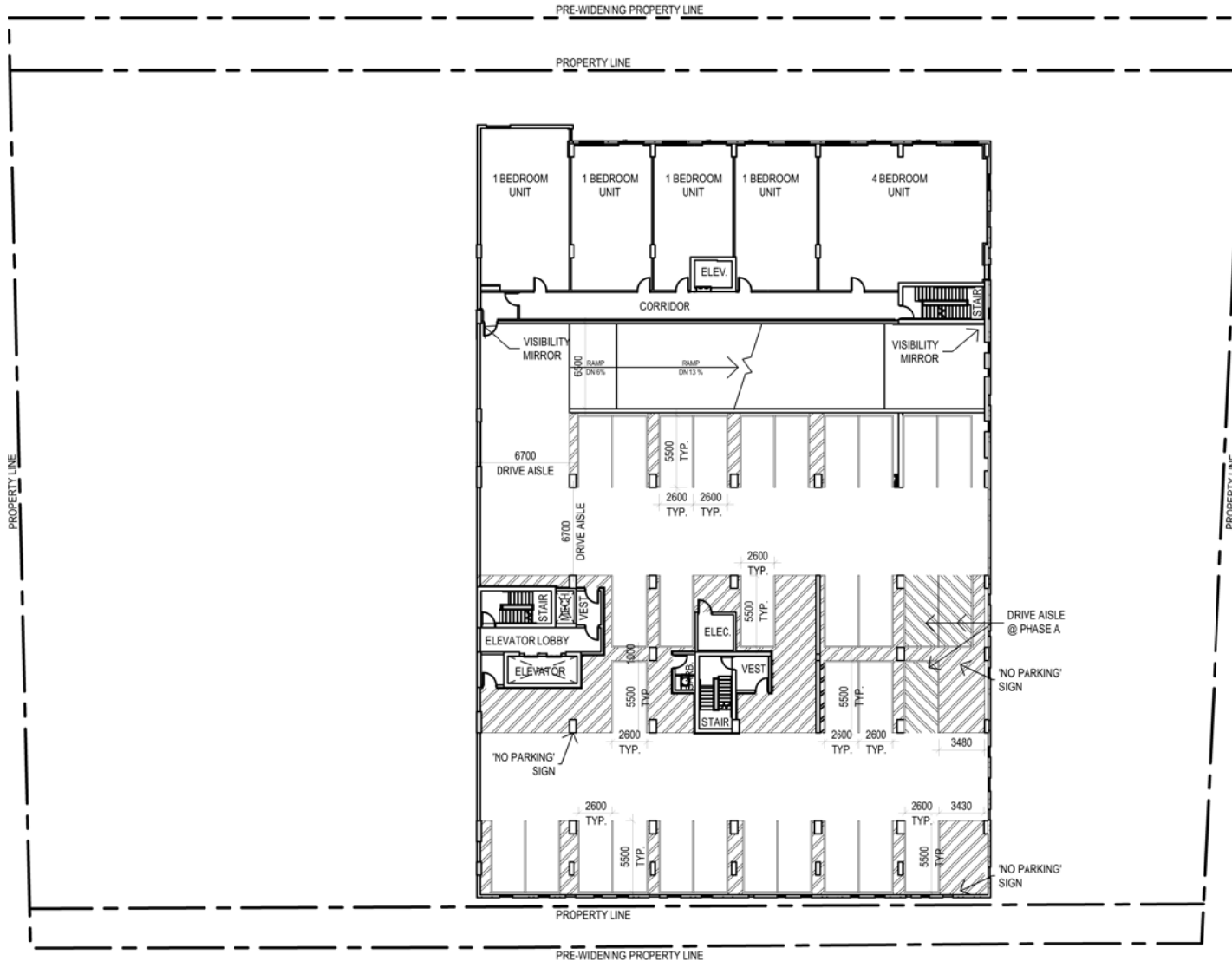
DATE: October 24, 2023

SITE PLAN APPLICATION No. SP23/075/K/CD

LOTS 24, 25, 26, 27, 28, 29 & 30 and PART OF LOTS 13, 14, 15, 16, 17, 18 & 19
 REGISTERED PLAN 262 and PART OF PARK LOT 25
 REGISTERED PLAN 404 and LOT 121 AND PART OF LOT 54 STREETS AND LANES

City of Kitchener
 DEVELOPMENT SERVICES DEPARTMENT

CAD FILE:
 SP23075KCD.dwg



SITE STATISTICS-COMLETE

Zoning- MU-3, 544R, 788R
 C of A Application- SP23/075/K/CD
 Lot Area- 6,492.2 m²
 Building Coverage- 3,668.7 m² (56.5%)
 Landscaped Area- 1,200.8 (18.5%)
 Asphalt / Hard Surface Area- 1,622.7 (25.0%)
 Parking Provided- 337
 Residential - 0.55 per dwelling unit = 285
 Visitor - 0.1 per dwelling unit = 52 Parking
 Barrier Free Parking = 10
 EV Parking = 66
 Space Minimum Dimensions- 2.6m x 5.5m

MULTI-RESIDENTIAL

Number of Units- 514
 Number of Visitor Spaces- 52
 Floor Space Ratio- 8.1
 Ground Floor Commercial Area: 336.0 m²
 BUILDING HEIGHT - 95.2 m (29 Storeys)
 Class A Bicycle parking- 0.5 per Unit = 257
 Class B Bicycle parking- 6

SITE STATISTICS-PHASE A

Zoning- MU-3, 544R, 788R
 C of A Application- SP23/075/K/CD
 Lot Area- 6,492.2 m²
 Building Coverage- 1943.8 m² (29.9%)
 Landscaped Area- 3612.7 (55.7%)
 Asphalt / Hard Surface Area- 935.5 (14.4%)
 Parking Provided- 154
 Residential - 0.58 per dwelling unit = 110
 Visitor = 43 Parking
 Barrier Free Parking = 3
 EV Parking = 35
 Space Minimum Dimensions- 2.6m x 5.5m

MULTI-RESIDENTIAL

Number of Units- 267
 Number of Visitor Spaces- 27
 Floor Space Ratio- 8.1
 Ground Floor Commercial Area: 227.9 m²
 BUILDING HEIGHT - 95.2 m (29 Storeys)
 Class A Bicycle parking- 0.5 per Unit = 134
 Class B Bicycle parking- 6

NOTE: ALL ASPHALT AREAS TO BE DEFINED WITH 0.15M HIGH POURED CONCRETE CURBING

PODIUM LEVEL 4 - PHASE A

1001 KING STREET EAST

"KING- CHARLES PROPERTIES (KITCHENER) LIMITED"



SCALE 1: 500

DATE: October 24, 2023

SITE PLAN APPLICATION No. SP23/075/K/CD

LOTS 24, 25, 26, 27, 28, 29 & 30 and PART OF LOTS 13, 14, 15, 16, 17, 18 & 19
 REGISTERED PLAN 262 and PART OF PARK LOT 25
 REGISTERED PLAN 404 and LOT 121 AND PART OF LOT 54 STREETS AND LANES

City of Kitchener
 DEVELOPMENT SERVICES DEPARTMENT

CAD FILE:
 SP23075KCD.dwg



SITE STATISTICS-COMplete

Zoning- MU-3, 544R, 788R
 C of A Application- SP23/075/K/CD
 Lot Area- 6,492.2 m²
 Building Coverage- 3,668.7 m² (56.5%)
 Landscaped Area- 1,200.8 (18.5 %)
 Asphalt / Hard Surface Area- 1,622.7 (25.0 %)
 Parking Provided- 337
 Residential - 0.55 per dwelling unit = 285
 Visitor - 0.1 per dwelling unit = 52 Parking
 Barrier Free Parking = 10
 EV Parking = 66
 Space Minimum Dimensions- 2.6m x 5.5m

MULTI-RESIDENTIAL

Number of Units- 514
 Number of Visitor Spaces- 52
 Floor Space Ratio- 8.1
 Ground Floor Commercial Area 336.0 m²
 BUILDING HEIGHT - 95.2 m (29 Storeys)
 Class A Bicycle parking- 0.5 per Unit = 257
 Class B Bicycle parking- 6

SITE STATISTICS-PHASE A

Zoning- MU-3, 544R, 788R
 C of A Application- SP23/075/K/CD
 Lot Area- 6,492.2 m²
 Building Coverage- 1943.8 m² (29.9%)
 Landscaped Area- 3612.7 (55.7 %)
 Asphalt / Hard Surface Area- 935.5 (14.4 %)
 Parking Provided- 154
 Residential - 0.58 per dwelling unit = 110
 Visitor = 43 Parking
 Barrier Free Parking = 3
 EV Parking = 35
 Space Minimum Dimensions- 2.6m x 5.5m

MULTI-RESIDENTIAL

Number of Units- 267
 Number of Visitor Spaces- 27
 Floor Space Ratio- 8.1
 Ground Floor Commercial Area: 227.9 m²
 BUILDING HEIGHT - 95.2 m (29 Storeys)
 Class A Bicycle parking- 0.5 per Unit = 134
 Class B Bicycle parking- 6

NOTE: ALL ASPHALT AREAS TO BE DEFINED WITH 0.15M HIGH POURED CONCRETE CURBING

RESIDENTIAL LEVEL 5 - PHASE A

1001 KING STREET EAST

"KING- CHARLES PROPERTIES (KITCHENER) LIMITED"



SCALE 1: 500

DATE: October 24, 2023

SITE PLAN APPLICATION No. SP23/075/K/CD

LOTS 24, 25, 26, 27, 28, 29 & 30 and PART OF LOTS 13, 14, 15, 16, 17, 18 & 19
 REGISTERED PLAN 262 and PART OF PARK LOT 25
 REGISTERED PLAN 404 and LOT 121 AND PART OF LOT 54 STREETS AND LANES

City of Kitchener
 DEVELOPMENT SERVICES DEPARTMENT

CAD FILE:
 SP23075KCD.dwg