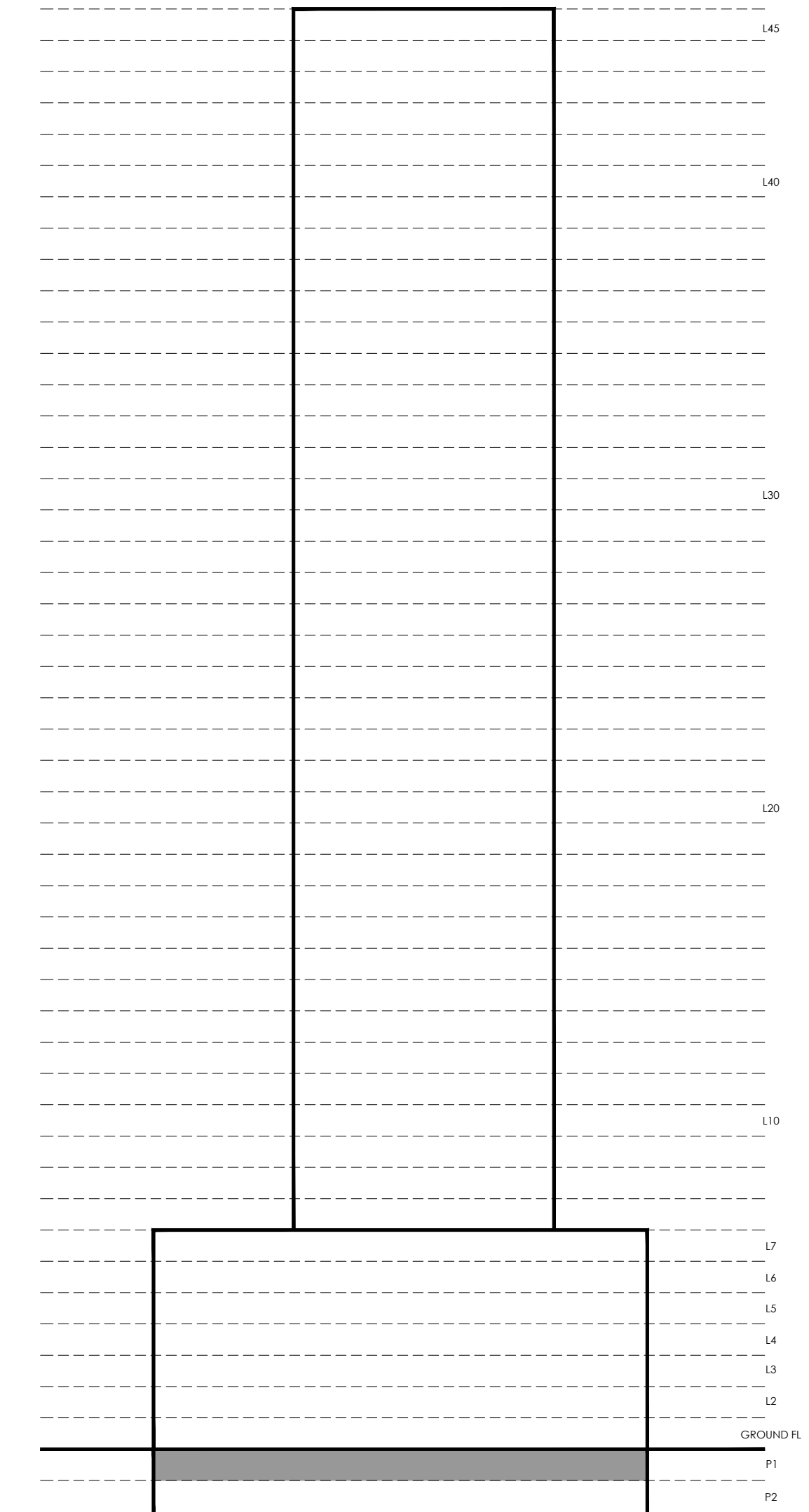
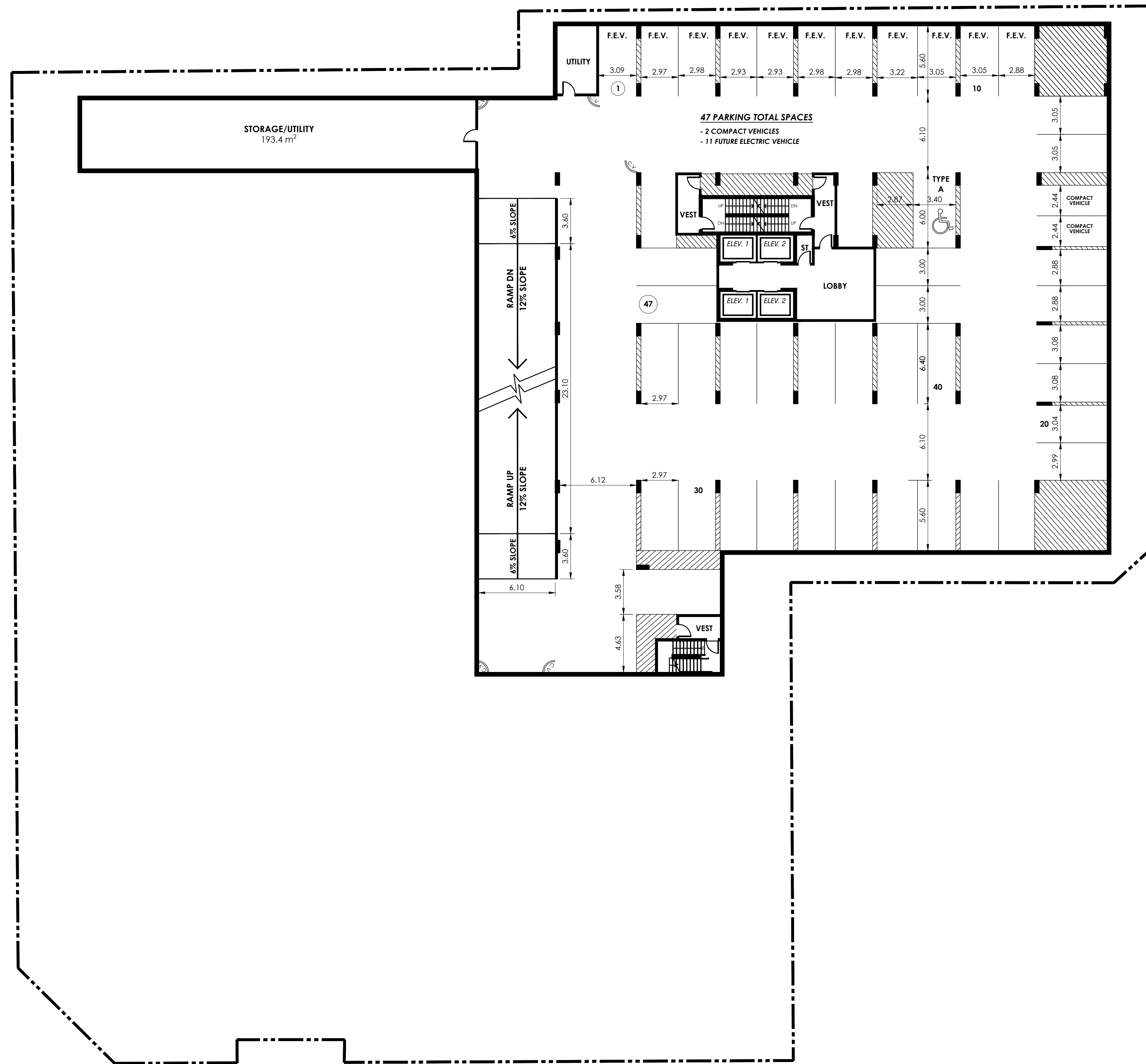
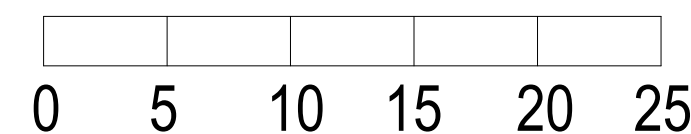


PINE ST



**UNDERGROUND PARKING  
LEVEL 1**

KING PINE KITCHENER INC  
864-876 KING ST. W. KITCHENER, ON.



SCALE 1:200  
DATE: 2024-12-16

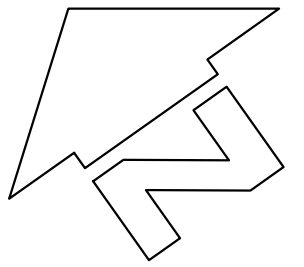
REVISED:

SITE PLAN APPLICATION No. SP24/069/K/ES

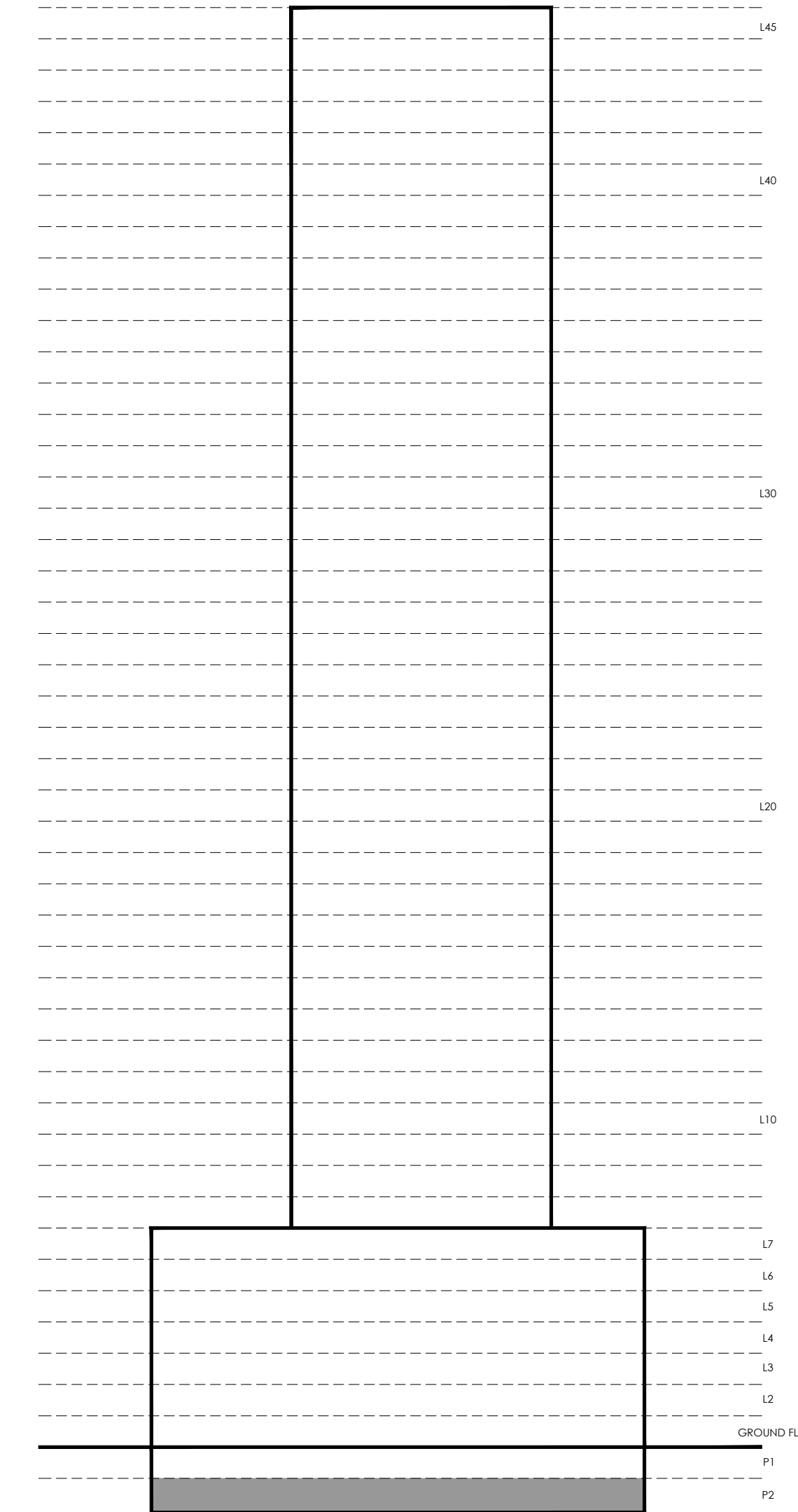
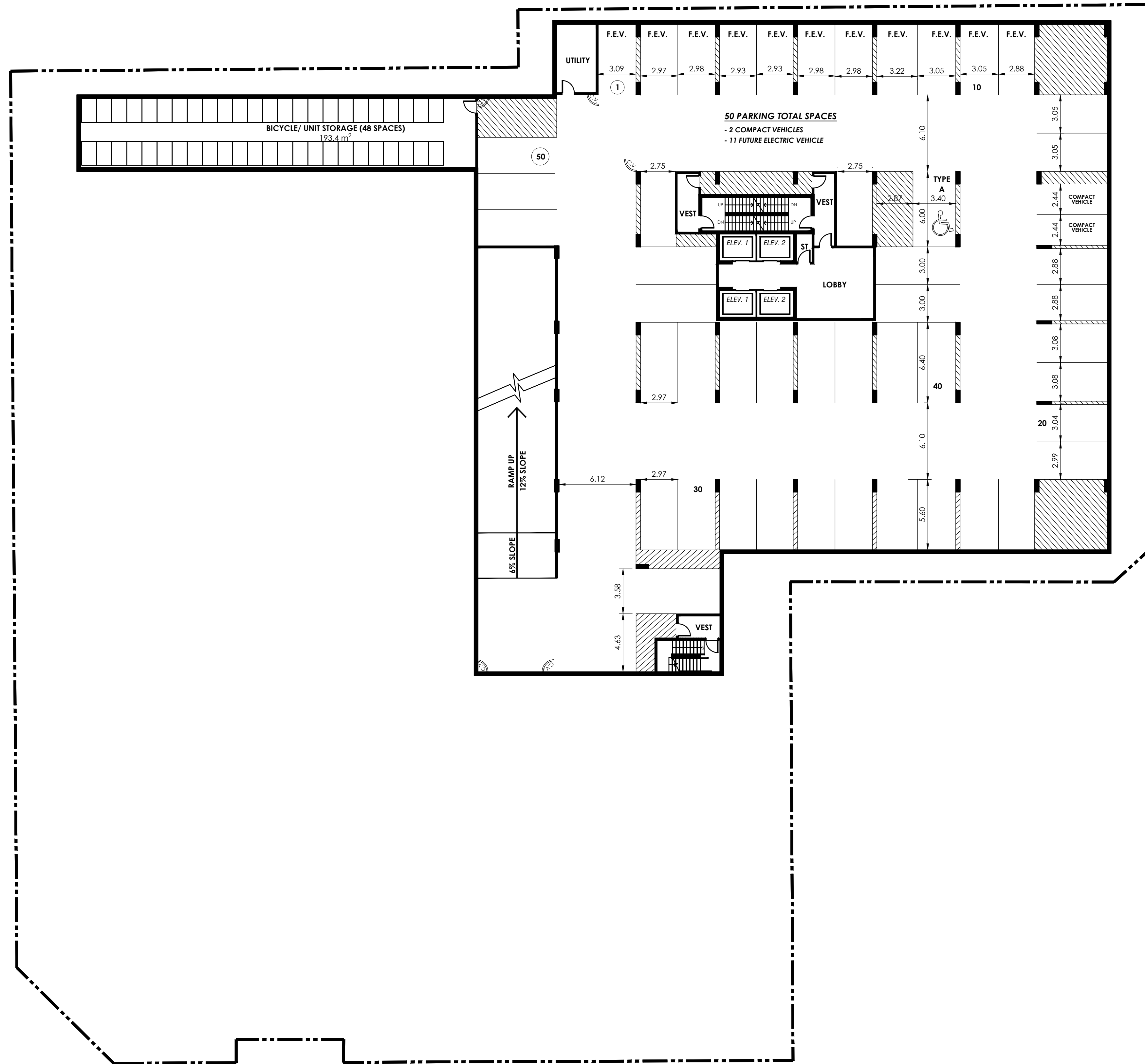
LEGAL DESCRIPTION  
LT 306, 319-320 PL 385 KITCHENER; PT LT 304-305, 312 PL 385 KITCHENER AS  
IN1309823, SAVE & EXCEPT PTS 1 & 2 ON EX PL WR838553 & PTS 1, 6 & 7,  
58R18537;T/W & S/T 725378; T/W 694748; CITY OF KITCHENER

**City of Kitchener**  
DEVELOPMENT SERVICES DEPARTMENT

CAD FILE:  
SP.DWG

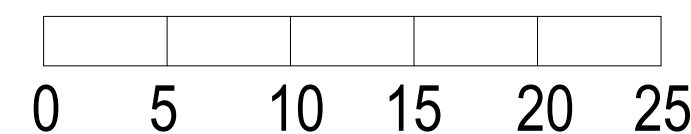


PINE ST



**UNDERGROUND PARKING  
LEVEL 2**

KING PINE KITCHENER INC  
864-876 KING ST. W. KITCHENER, ON.



SCALE 1:200  
DATE: 2024-12-16

REVISED:

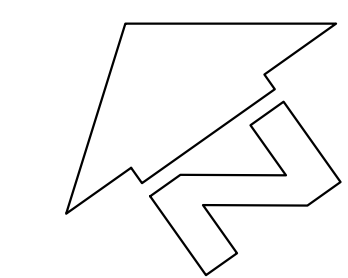
SITE PLAN APPLICATION No. SP24/069/K/ES

LEGAL DESCRIPTION

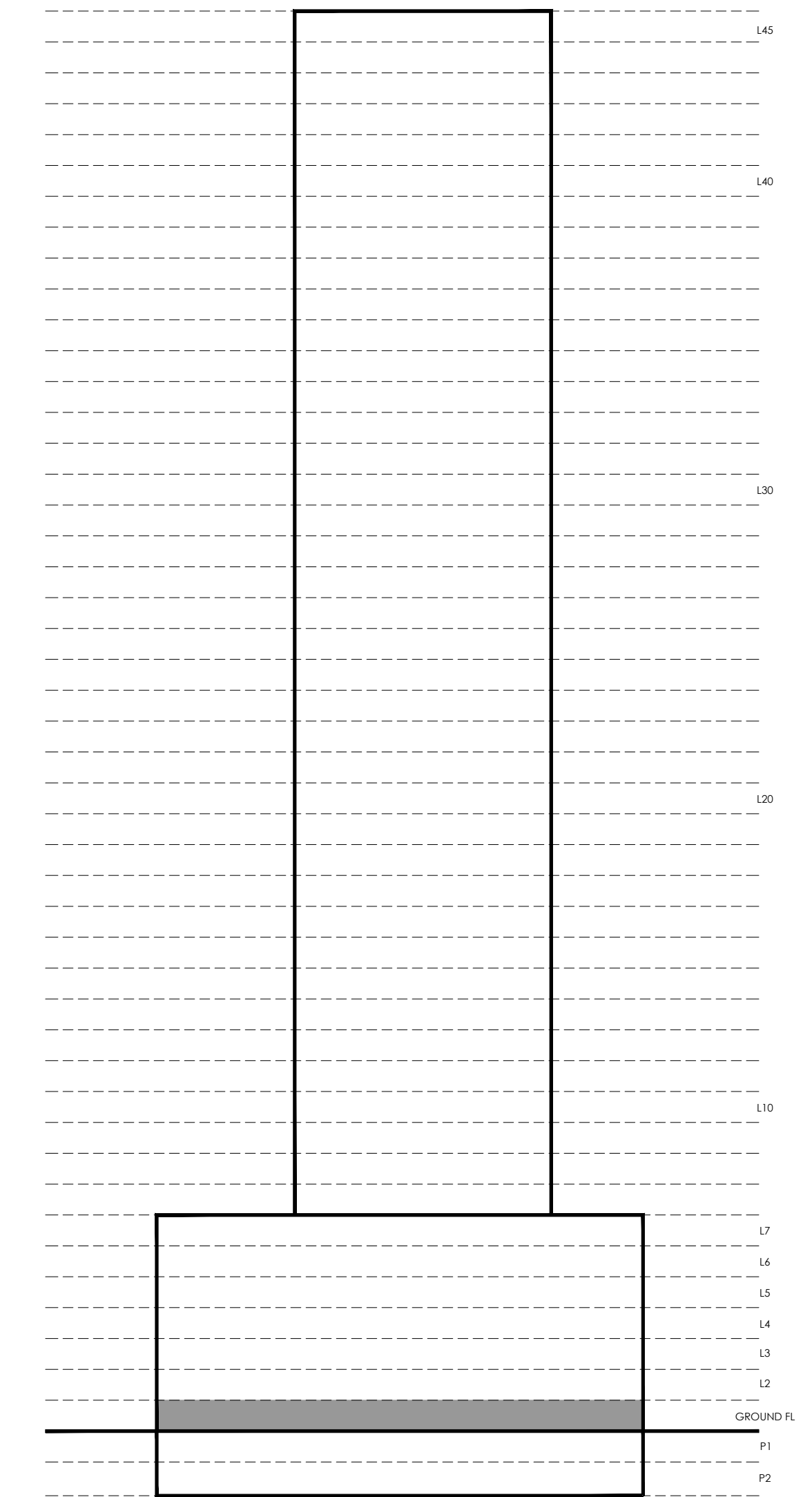
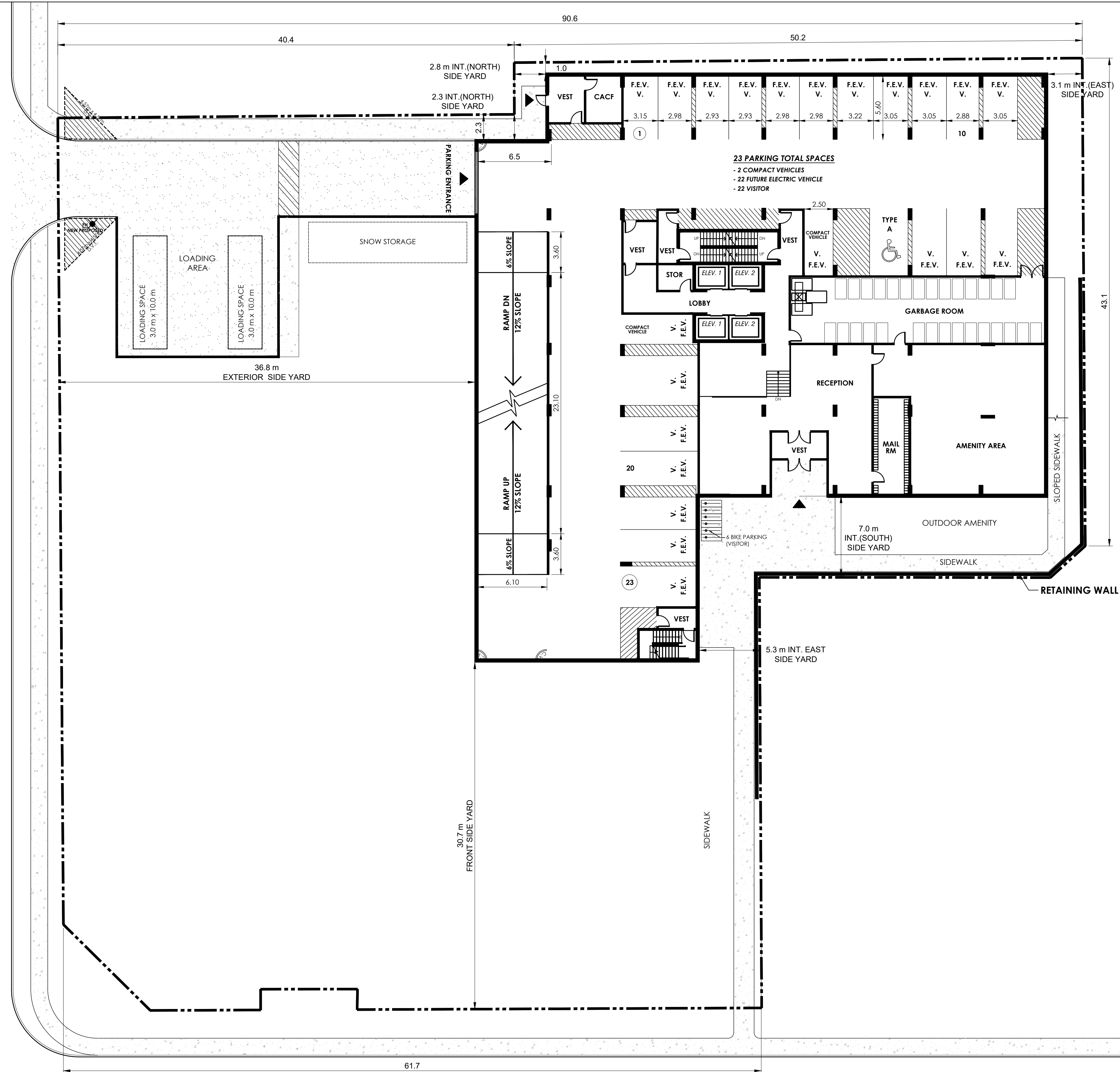
LT 306, 319-320 PL 385 KITCHENER; PT LT 304-305, 312 PL 385 KITCHENER AS  
IN1309823, SAVE & EXCEPT PTS 1 & 2 ON EX PL WR838553 & PTS 1, 6 & 7,  
58R18537;T/W & S/T 725378; T/W 694748; CITY OF KITCHENER

**City of Kitchener**  
DEVELOPMENT SERVICES DEPARTMENT

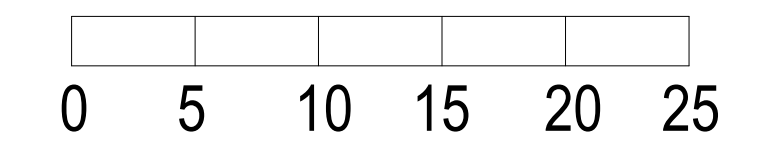
CAD FILE:  
SP.DWG



PINE ST



# GROUND FLOOR PLAN



REVISED:

SITE PLAN APPLICATION No. SP24/069/K/ES

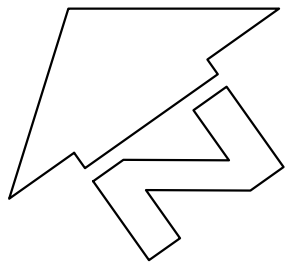
LEGAL DESCRIPTION  
*LT 306, 319-320 PL 385 KITCHENER; PT LT 304-305, 312 PL 385 KITCHENER AS IN1309823, SAVE & EXCEPT PTS 1 & 2 ON EX PL WR838553 & PTS 1, 6 & 7, 58R18537; T/W & S/T 725378; T/W 694748; CITY OF KITCHENER*

KING PINE KITCHENER INC  
 864-876 KING ST. W. KITCHENER, ON.

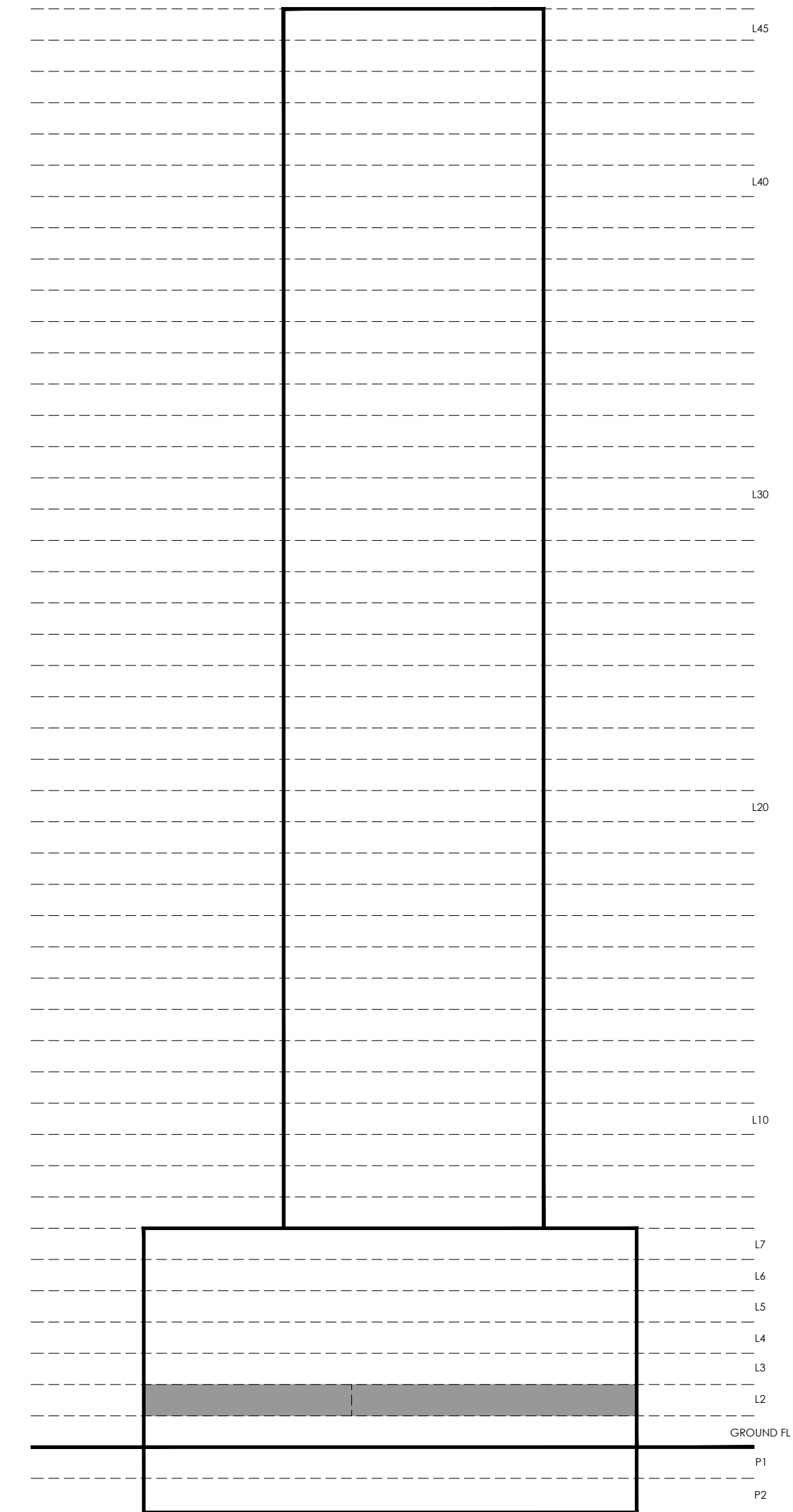
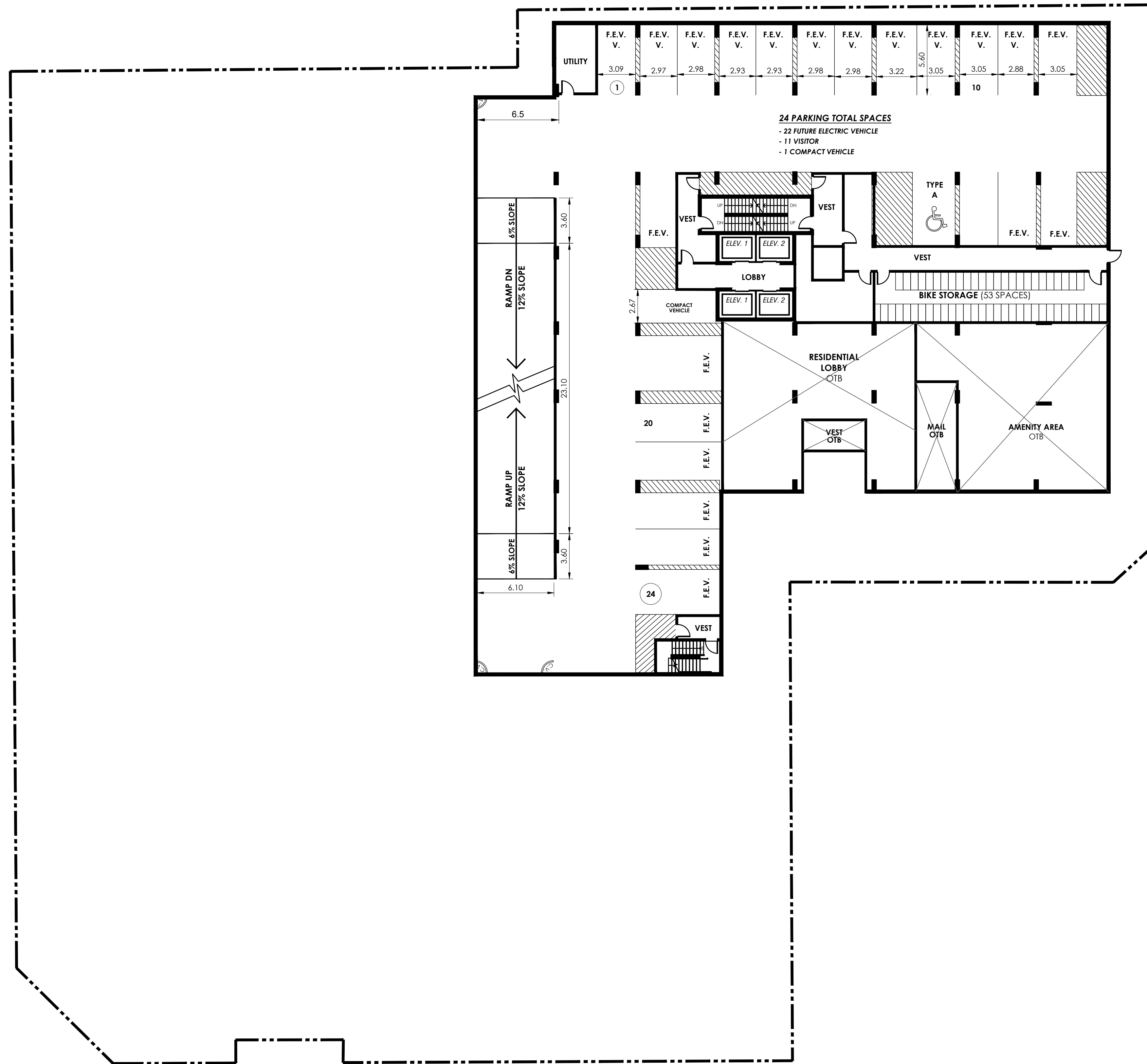
SCALE 1:200  
 DATE: 2024-12-16

**City of Kitchener**  
 DEVELOPMENT SERVICES DEPARTMENT

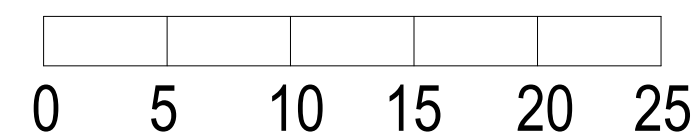
CAD FILE:  
 SP.DWG



PINE ST



# LEVEL 2



REVISED:

SITE PLAN APPLICATION No. SP24/069/K/ES

LEGAL DESCRIPTION

LT 306, 319-320 PL 385 KITCHENER; PT LT 304-305, 312 PL 385 KITCHENER AS IN1309823, SAVE & EXCEPT PTS 1 & 2 ON EX PL WR838553 & PTS 1, 6 & 7, 58R18537;T/W & S/T 725378; T/W 694748; CITY OF KITCHENER

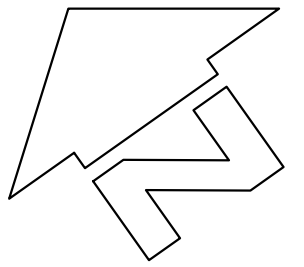
KING PINE KITCHENER INC  
864-876 KING ST. W. KITCHENER, ON.

SCALE 1:200

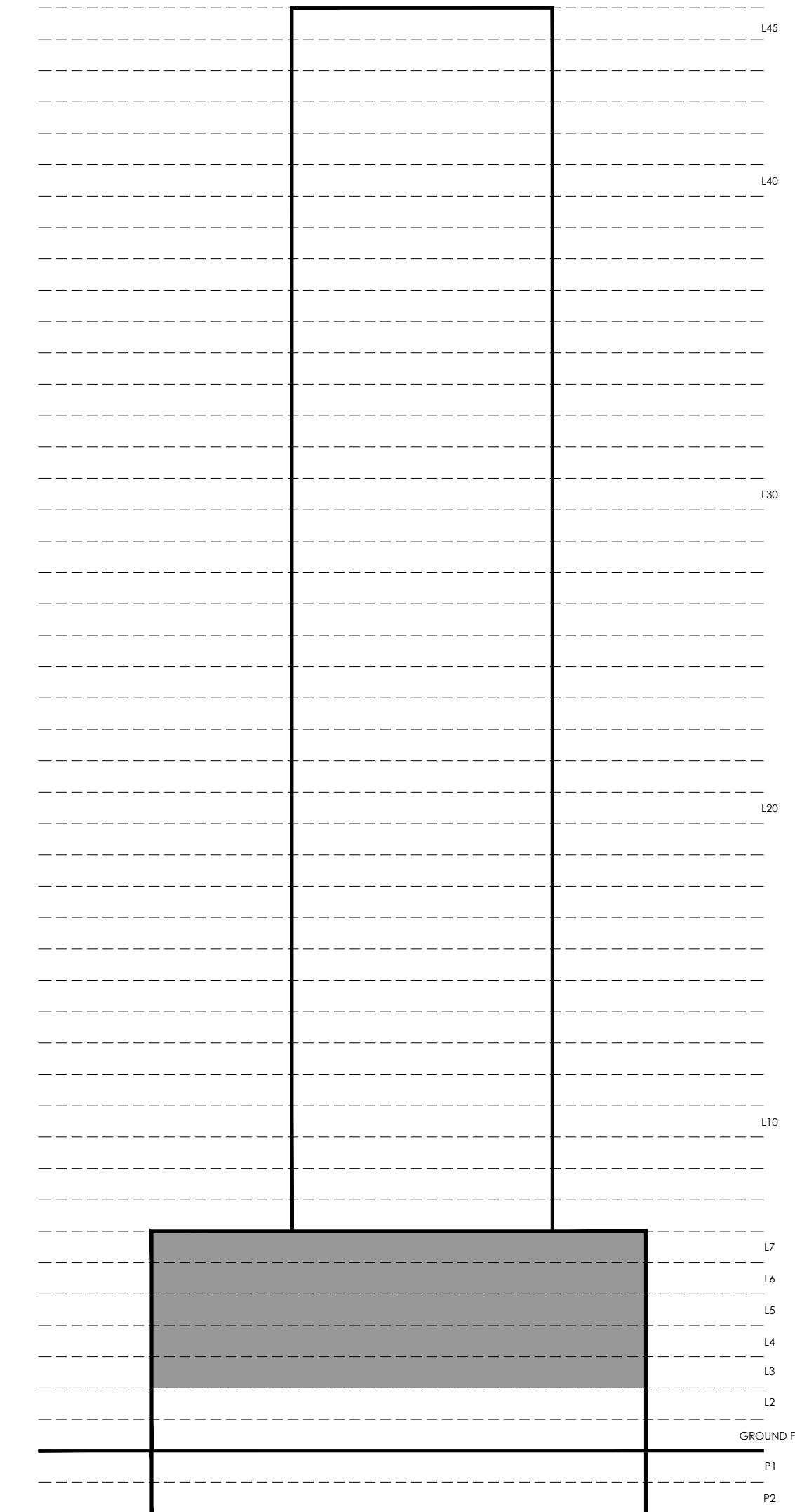
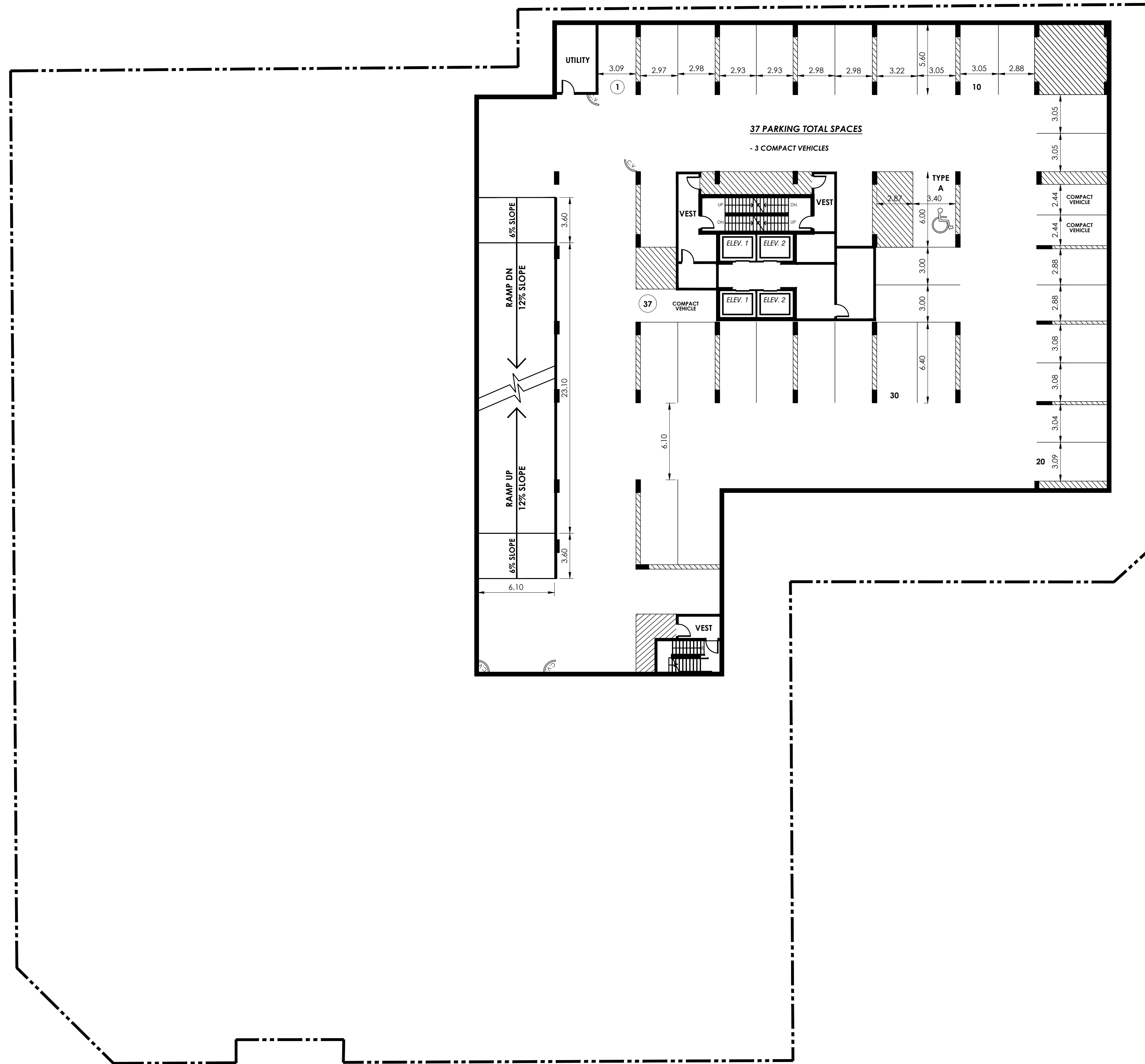
DATE: 2024-12-16

**City of Kitchener**  
DEVELOPMENT SERVICES DEPARTMENT

CAD FILE:  
SP.DWG

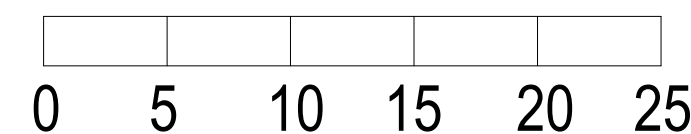


PINE ST



# LEVEL 3 - 7

KING PINE KITCHENER INC  
864-876 KING ST. W. KITCHENER, ON.



SCALE 1:200  
DATE: 2024-12-16

REVISED:

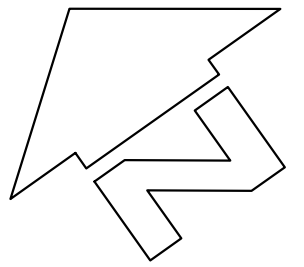
SITE PLAN APPLICATION No. SP24/069/K/ES

LEGAL DESCRIPTION

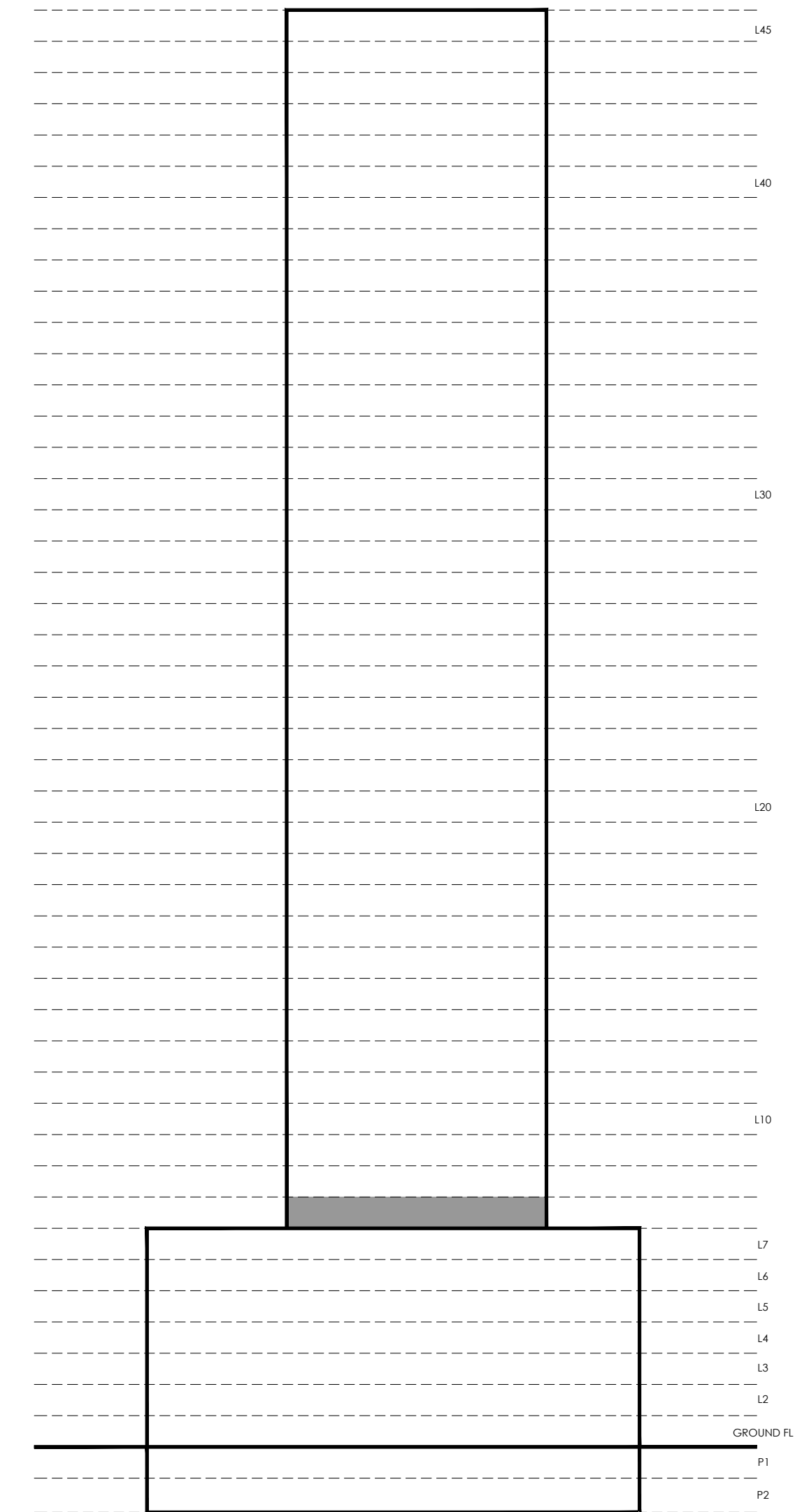
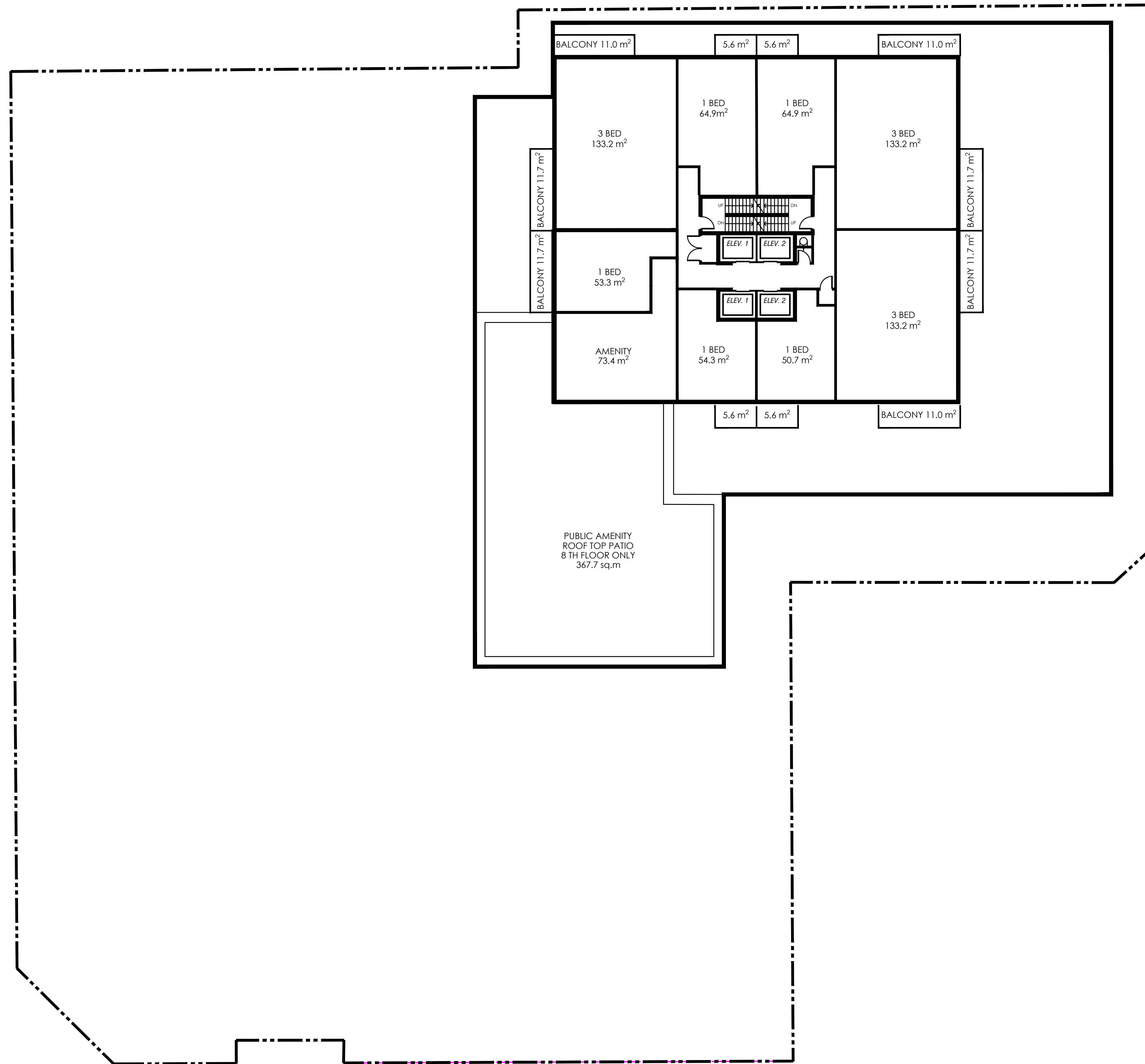
LT 306, 319-320 PL 385 KITCHENER; PT LT 304-305, 312 PL 385 KITCHENER AS IN 1309823, SAVE & EXCEPT PTS 1 & 2 ON EX PL WR838553 & PTS 1, 6 & 7, 58R18537; T/W & S/T 725378; T/W 694748; CITY OF KITCHENER

**City of Kitchener**  
DEVELOPMENT SERVICES DEPARTMENT

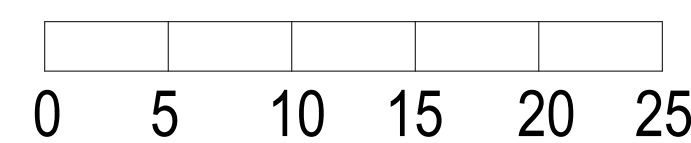
CAD FILE:  
SP.DWG



PINE ST



# LEVEL 8



SCALE 1:200

DATE: 2024-12-16

REVISED:

## SITE PLAN APPLICATION No. SP24/069/K/ES

### LEGAL DESCRIPTION

*LT 306, 319-320 PL 385 KITCHENER; PT LT 304-305, 312 PL 385 KITCHENER AS  
IN1309823, SAVE & EXCEPT PTS 1 & 2 ON EX PL WR838553 & PTS 1, 6 & 7,  
58R18537;T/W & S/T 725378; T/W 694748; CITY OF KITCHENER*

# City of Kitchener

DEVELOPMENT SERVICES DEPARTMENT

CAD FILE:  
SP.DWG

KING PINE KITCHENER INC  
864-876 KING ST. W. KITCHENER, ON.