

Township of North Dumfries

Brown's Community Park Improvements

PRESENTED TO:

Grand River Accessibility
Advisory Committee



The TOWNSHIP of
NORTH DUMFRIES





Where we started!

- Leisure Services Master Plan was adopted by Council in June 2022 as a blueprint to inform future decision making related to parks & trails, sports fields, leisure & recreational programming, and recreational facilities
- A key determinant arising from the Master Plan was that the four rural parks located in Roseville, Brown's subdivision, Clyde and Branchton were underutilized and could offer so much more to support their adjacent neighbourhoods
- A Community meeting was held with the Browns subdivision community in June 2023 to layout the current park amenities and discuss / share ideas and options for an updated park design



Base Level Rural Park Amenities

“Base level park amenities” for the rural settlement parks should include:

- Play structure geared to ages 2- 12 yrs;
- Unorganized open play area;
- Asphalt Multi-purpose Pad (approximately 22.55 m x 12.80 m);
- Shade Structure to accommodate two benches and/or picnic table;
- Sitting area – benches adjacent the play structure; and, along the access path from the street to the principal activity area to achieve AODA requirements;
- Tree Plantings;
- Limestone pathway(s) with a width of 2 metres to provide access to areas of focus within the park
- Park and trail head signage and designation when necessary.



CURRENT Browns Subdivision Community Park



Browns Subdivision Community Park – 25 Oakwood Drive, North Dumfries.

- 1.74 ha (4.31 acres) land area (includes storm water management facility) and 0.77 ha (1.92 acres) forested within park landholding
- Township now has ownership and control of the lands associated with the former pump house

CURRENT AMMENITIES:

- Play Structure
- Unorganized play area
- Soccer posts
- Tree planting for shade
- Wood Lot

Current Play Structure



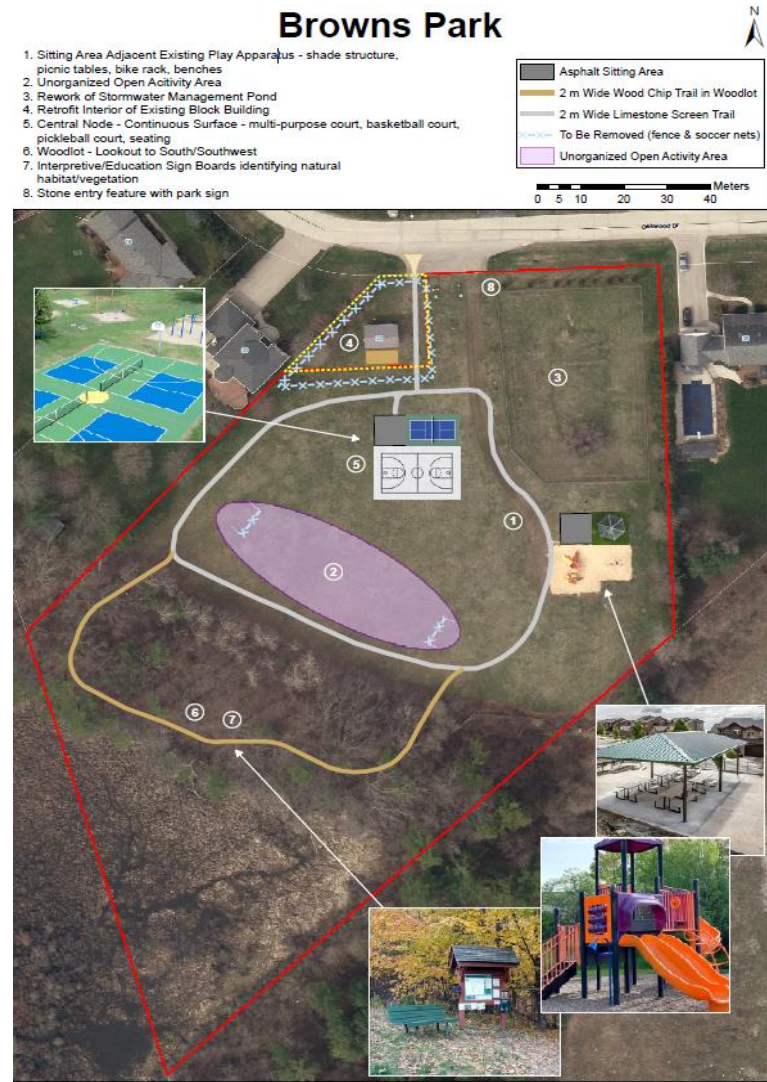
The current play structure was replaced in 2022 after a presentation to GRAAC was delivered.



Next Steps – The Design

Township Projects:

- 2 m Limestone path
- Remove fencing around water building
- Sitting area adjacent play structure
- Tree Planting
- Remove soccer posts for unorganized play area
- Build an asphalt multi-purpose court
- Woodlot lookout
- Trail head signage
- Park entry signage
- Rework Storm Water Management Pond



Committee Fundraising Opportunities

- Shade structures
- Memorial Benches
- Enhanced features within park including upgrades to pathway or multi-purpose court materials or in-kind donations.

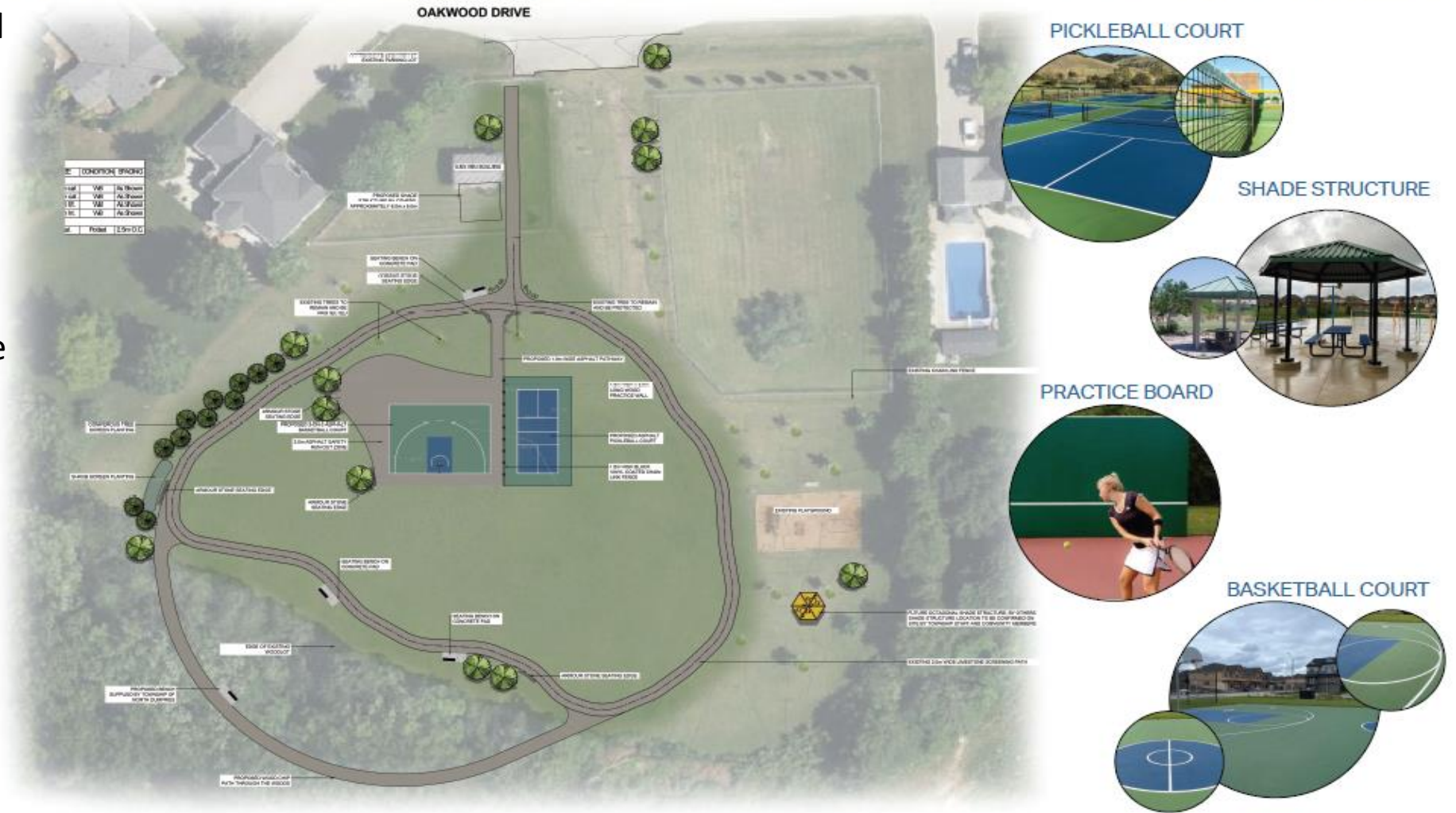


The Proposed NEW Design

BROWN'S SUBDIVISION PARK, NORTH DUMFRIES

The New Park Features will include:

- Pickleball Court
- Half Court Basketball
- 4 benches around the walking path
- Numerous armoustone seating sections around the path
- Shade structure near the play ground
- Tree Plantings
- Trail into the woodlot with proper signage

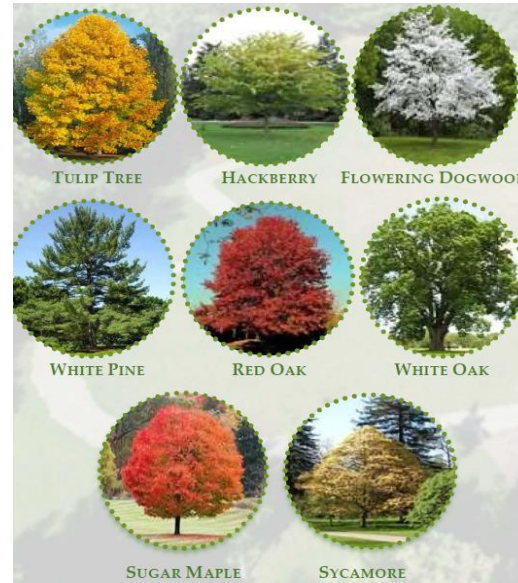




Proposed NEW Amenities



New Benches



Tree Plantings



Armourstone Seating



Trail Signage

Shade Structure



CURRENT Browns Subdivision Community Park

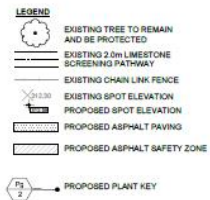


Completed:

- Removal of fence around the former Pumphouse
- Installation of 2 m wide limestone screening path around park
- Installation on a planting berm

[illegible]

		PLANT LIST				
KEY	QTY	BOTANICAL NAME	COMMON NAME	SIZE	CONDITION	SPACING
TRBS						
Ac	4	<i>Acer saccharum</i>	Sugar Maple	10-15 gal	Plotted	As Shown
Cc	2	<i>Cercis canadensis</i>	Red Bud	2 gal	Plotted	As Shown
Cf	1	<i>Cornus florida</i>	Flowering Dogwood	Clump 175cm	WB	As Shown
Cr	2	<i>Carya cordata</i>	Common Hickory	15 gal	Plotted	As Shown
Lf	2	<i>Lindocordus tulipifera</i>	Tulip Tree	50cm cal	WB	As Shown
Ps	6	<i>Pinus strobus</i>	White Pine	1 gal	Plotted	As Shown
Qc	2	<i>Quercus alba</i>	White Oak	60-150cm	Bar Root	As Shown
Qr	1	<i>Quercus rubra</i>	Red Oak	50-150cm	Bar Root	As Shown
Tc	1	<i>Taxus canadensis</i>	Eastern Hemlock	2.0m	WB	As Shown
Tp	2	<i>Thuja occidentalis</i>	Northern Cedar	2 gal	Plotted	As Shown
Vf	1	<i>Vernonia spicata</i>	Wormleaf Plantain	2 gal	Plotted	As Shown



TIMELINES

May 2025 (Phase 2)

- Multipurpose court installation will begin
- 2028 & beyond**
- Rework Storm water management pond



Questions?

Karen Winter - Director of Leisure and Community Services
kwinter@northdumfries.ca