



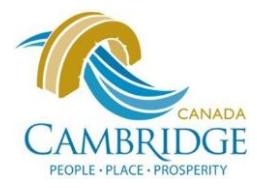
# City of Kitchener Climate Change and Environment Committee

June 19, 2025

Coordinate

Measure

Engage





## TRANSFORM<sub>WR</sub>

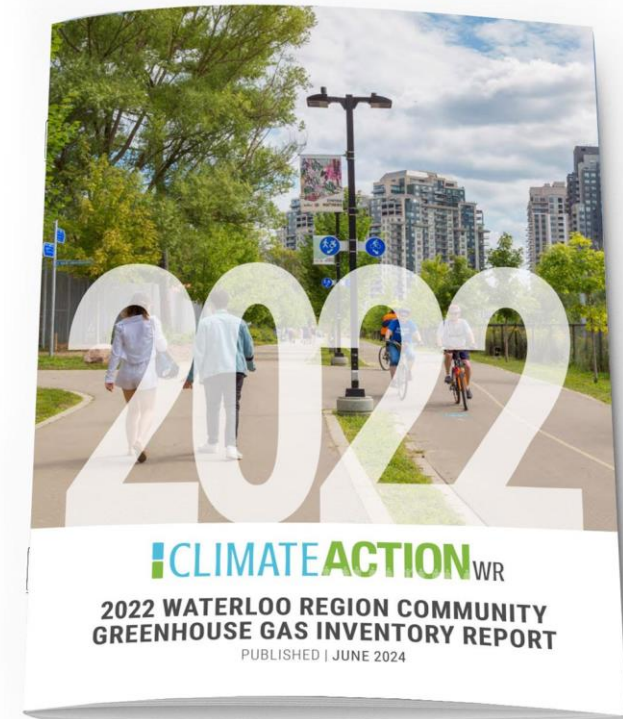
Waterloo Region's Transition to an  
Equitable, Prosperous, Resilient Low Carbon Community

## Reports

- GHG Inventory Report (biennial)
  - 2023, 2024, 2026, 2028, 2030
  - Council delegations to all 8 local municipalities
- TransformWR Progress Report (biennial)
  - Inaugural report and in 2025
- SWR & Reep Impact Reports (annual)

## TransformWR Dashboard

- Progress on all actions in TransformWR
- GHG Emissions data
- Other metrics related to TransformWR (to come)





## TRANSFORMWR PROGRESS DASHBOARD

A ClimateActionWR Progress Reporting Tool For Waterloo Region

We are building a better future for our community through climate action and every business, organization, municipality and individual has a role to play! [↗](#)  
TransformWR is our community's climate action strategy and will help guide the community as we collectively do the work to transition Waterloo Region to a more equitable, prosperous, resilient low carbon community.

[Read more](#)

## TRANSFORMATIVE CHANGES



1. ACTIVE TRANSPORTATION



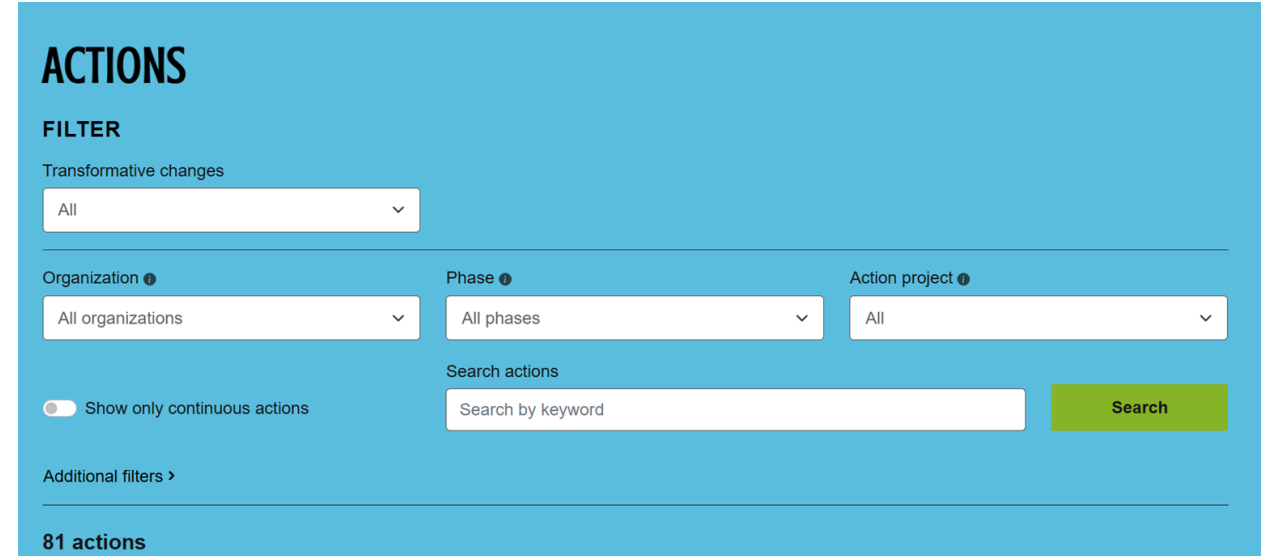
2. ZERO EMISSION VEHICLES



3. FUEL SWITCHING OUR BUILDINGS

## Dashboard Action Details

- Description of action
- Collective progress status
- Timeline
- Priority
- Responsible Organizations



**ACTIONS**

**FILTER**

Transformative changes

All

Organization ⓘ All organizations

Phase ⓘ All phases

Action project ⓘ All

Search actions

☐ Show only continuous actions

Search by keyword

Search

Additional filters >

81 actions

## Requirements for Action Updates

- Annual updates are requested in the fall
- Purpose is to provide a high-level summary of progress toward an action provided by a leading or participating partner
- Progress status of the Action changed by ClimateActionWR Plan Manager based on collective updates of all partners



## Action Roles

- **Lead** - Responsible party for the action progress (in their jurisdiction)
- **Support** - A key stakeholder on an action but not in their jurisdiction to lead
- **Participant** - Lead by example or participate in a program under this action as an organization