

Existing Park Inventory

Current Park Status

The City is home to more than 1,700 hectares of park and open space. More than half of this are 'natural' areas – woodland and forests, creeks and wetlands that provide passive recreational opportunities such as walking and hiking, and home to countless types of wildlife.

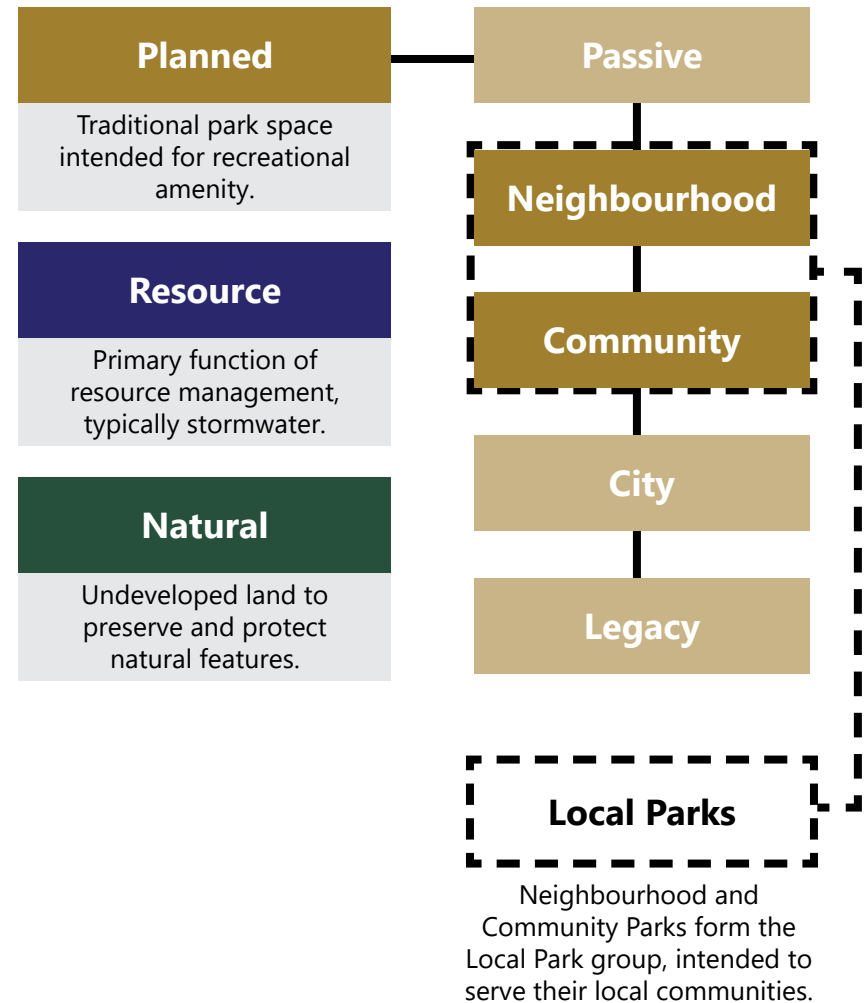
The balance, about 40%, makes up the Planned Park System and reflects what community may often associate with a City Park – more actively maintained and used spaces for things like sports, community gathering and festivals and facilitated play.

Other Open Spaces

Many other types of open space exist – urban plazas, hydro corridors and school yards all add and support outdoor recreation opportunities in each community.

These Spaces are incredibly important to community and Spaces reflects on that. These spaces are often managed and owned by other organizations, and it is critical to understand their use is *in addition to* a publicly owned and operated parks system.

Updated Park Categories

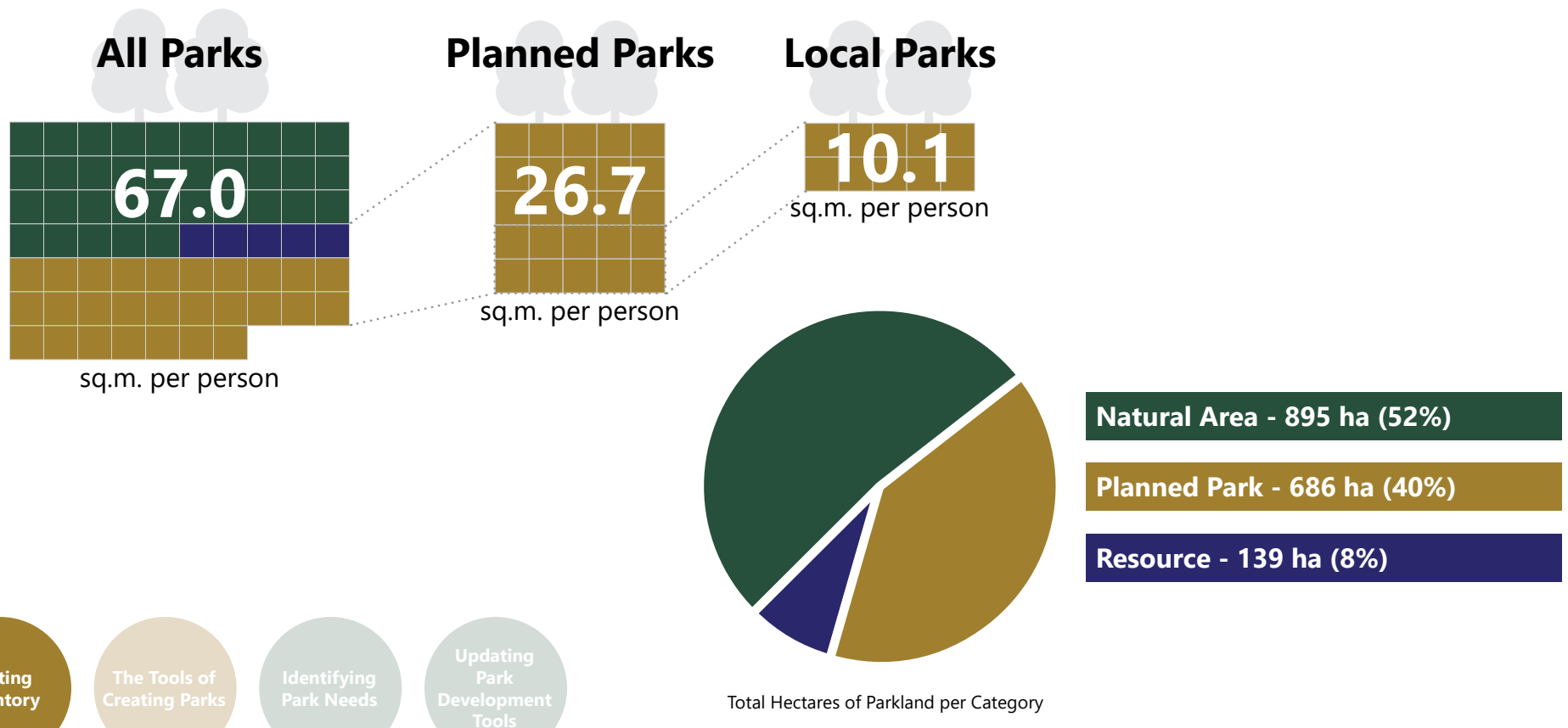


Existing Park Inventory

How Much Parkland is There?

Kitchener has approximately 10 square meters of local parks per person that lives here. If ever resident in Kitchener visited their local park, each person would have an area about the size of the average bedroom to be in!

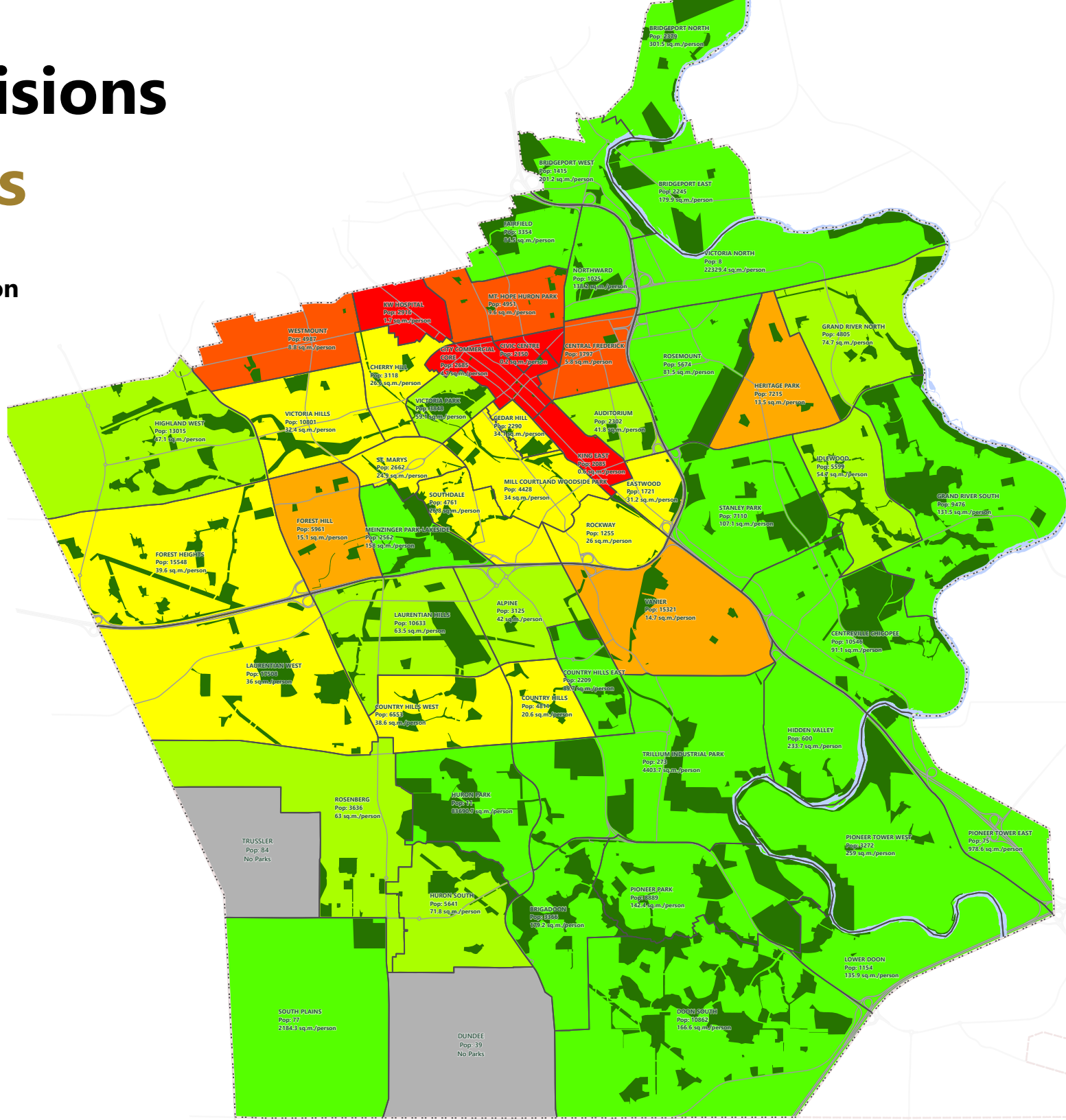
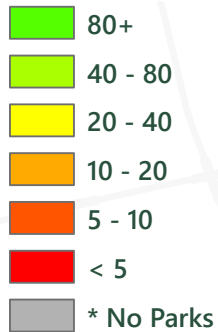
Local parks are the backbone of the park system and provide the daily experience for walking the dog or passing through on your way to work or school. In total more than 200 park spaces can be found across the City, ranging from vast sites like Huron Natural Area to small neighbourhood parks like Hibner Green.



Park Provisions

All Parks

City Average:
67.0 sq.m. per person



City & Legacy Parks

- 1 Huron Natural Area
- 2 Kiwanis Park
- 3 McLennan Park
- 4 Rockway Gardens
- 5 Victoria Park

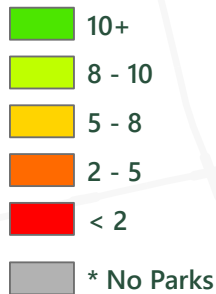
- 1 Breithaupt Park
- 2 Bridgeport Sportsfields
- 3 Budd Park
- 4 Joe Thompson Park
- 5 KMAC Auditorium Complex
- 6 Lions Park
- 7 Peter Hallman Ballyard
- 8 RBJ Schlegel Park
- 9 Rosenberg Park
- 10 Woodside Park



Park Provisions

Local Parks

City Average:
10.1 sq.m. per person



Community Parks (11):

- 1 Chandler Park
- 2 Cherry Park
- 3 Fischer Park
- 4 Forest Heights CC Park
- 5 Gzowski Park
- 6 Idlewood Park
- 7 Tyson Park
- 8 Knollwood Park
- 9 Upper Canada Park
- 10 Wilson Park
- 11 Weber Park

