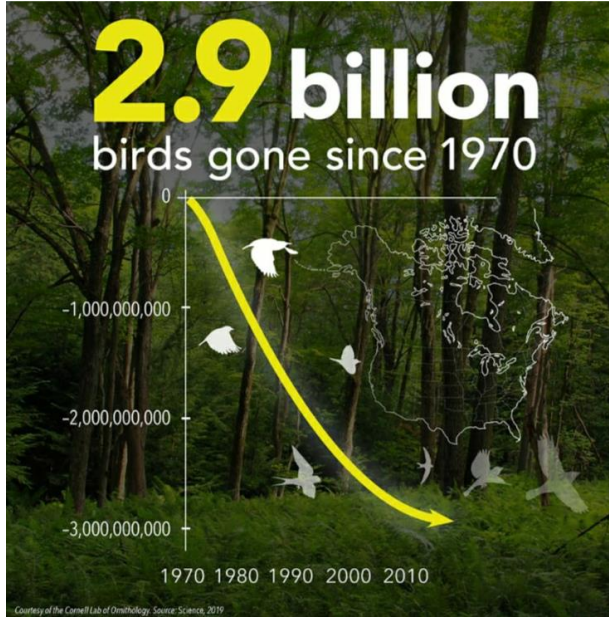


Cornell University research on North American Birds



2.5
BILLION
MIGRATORY BIRDS
LOST SINCE 1970

The text is displayed in large, bold, orange and white letters against a background of autumn foliage.

-28%
POPULATION LOSS
IN MIGRATORY
BIRD SPECIES
SINCE 1970

The text is displayed in large, bold, orange and white letters against a background of autumn foliage.

A monarch butterfly with orange and black wings is perched on a yellow flower. The background is a soft, out-of-focus yellow.

The Toronto Entomologists' Association:

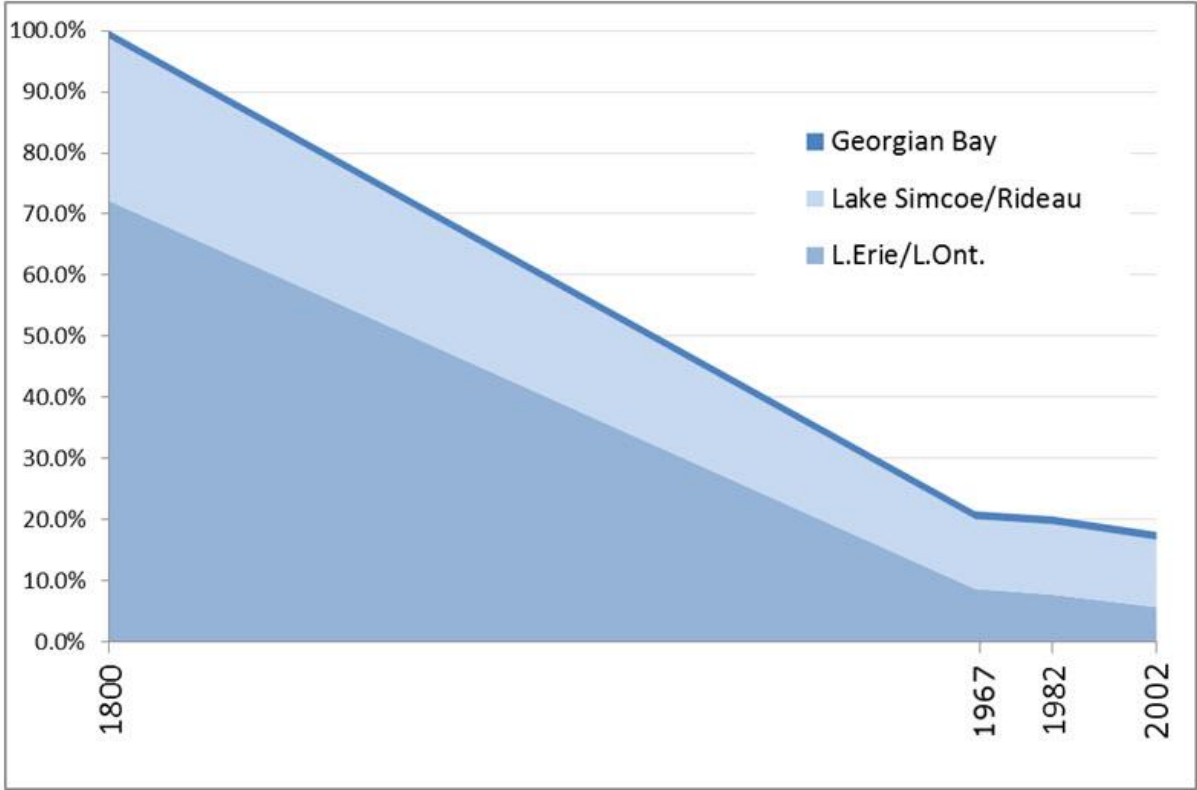
"Canada has, perhaps, more wilderness than any other country on this planet.

But most of these large, wild areas are in the north where species diversity is relatively low.

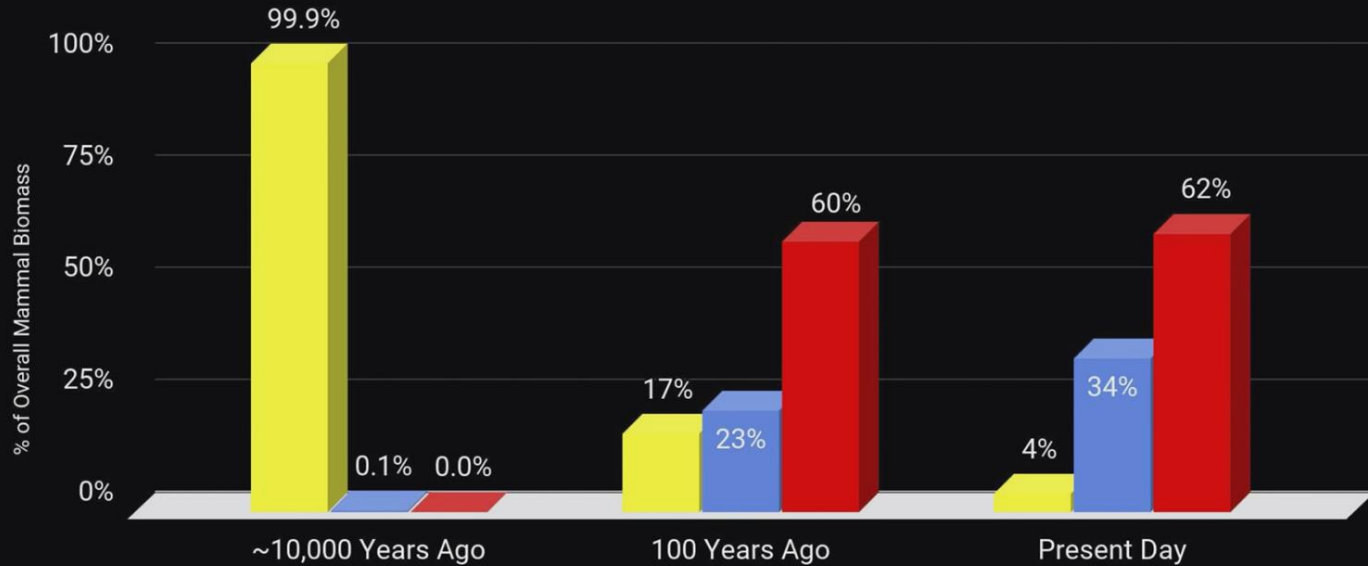
It is in the localized, threatened habitats of southern Canada where most endangered butterfly species are found, and it is these habitats in particular that need protection.

Every local, provincial, or national park established will help ensure the preservation of some or many butterfly species."

Blanding's Turtles, like the HNA's Samuel, are declining rapidly



Biomass of Mammals (%) by Time Period



■ Wild Mammals ■ Humans ■ Farmed Mammals

Source: Hannah Ritchie
(2022) - Our World in Data

*Animal agriculture is
the leading driver of
biodiversity loss.*



According to the iNaturalist Checklist, the following are some of our wild friends who have been spotted at the Huron Natural Area this year...



Pine Warbler



Yellow-rumped Warbler



Blue Jay



Northern Cardinal



Cape May Warbler



Red-breasted Nuthatch



European Starling



Northern House Wren



American Goldfinch



Purple Finch



Pine Warbler



White-breasted Nuthatch

Eastern Grey Squirrel



Muskrat



Virginia Opossum



Canadian Beaver



White-tailed Deer



American Red Squirrel



Eastern Chipmunk



Eastern Meadow Vole

Wild Indigo Duskywing



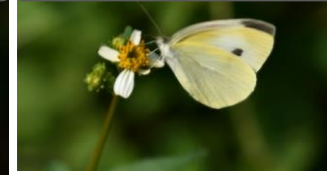
Tawny Emperor



Northern Pearly-Eye



Cabbage White



Mourning Cloak



Black Swallowtail



Great Spangled Fritillary



Clouded Sulphur



Common Wood-Nymph

Aspen Serpentine Leafminer Moth



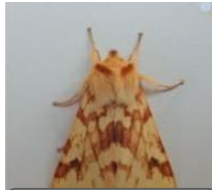
Poison Ivy Leaf-miner Moth



Goldenrod Elliptical-Gall Moth



Spotted Tussock Moth



Hickory Tussock Moth



Milkweed Tussock Moth



Viceroy



Black Swallowtail





Eastern Newt



Grey Treefrog



Spring Peeper



Wood Frog



Green Frog



Northern Leopard Frog