

LET'S PLAY! (v.2.1) EXTERIOR PUBLIC ARTWORKS
FOR THE CITY OF KITCHENER AND THE COWAN RECREATION CENTRE
PUBLIC ARTWORKS FOR THE WEST & NORTH ENTRANCES
KITCHENER, ONTARIO, CANADA
APRIL 17, 2026

C/O Karoline Varin
Program Administrator
Arts & Creative Industries
Economic Development, 200 King Street West
Kitchener, ON, N2G 4G7, Canada

pierre poussin
2308 - 5791 Yonge Street
North York, ON, M2M 0A8
t: 1.416.880.6427
e: pierrepoussin@gmail.com
w: www.pierrepoussin.com

Table of Content

Table of Content	p.2
<i>Let's Play!</i> – A Narrative Description	p.3-4
Fabrication Team	p.5
Fabrication Notes	p.6
Preliminary Dimensions for Artworks	p.6
Safety, Security and Technical Maintenance Considerations	p.6-7
Preliminary Project Timeline	p.7
Preliminary Project Budget	p.7
Preliminary Fabricator's Budget (Updated for 5x Exterior Sculptures)	p.8
Preliminary Elevations and Site Plan	p.9
Preliminary Renders of Updated Exterior Sculptures	p.10-26

C/O Karoline Varin, Program Administrator
Arts & Creative Industries, Economic Development
200 King Street West, Kitchener, ON, N2G 4G7, Canada

RE: THE COWAN RECREATION CENTRE PUBLIC ART CALL

April 16, 2026

Let's Play! – A Narrative Description

One of the major joys of imagining a piece of public art is in the discovery and research of the proposed site. Having almost two decades of experience creating artworks specifically for public environments, my work often revolves around themes of nature, celebration, and whimsy. I have always paid close attention to the demographics of neighbouring communities, and I strive to delight people through public art by weaving recognizable themes into my work.

My specific goal for the Cowan Recreation Centre public art program is simple: create playful moments of interaction and celebration between families and the art. This approach naturally leads to playful, welcoming, and enthusiastic experiences, featuring artworks that encourage physical interaction, tactile connection, and a celebration of Kitchener's local animals. *Let's Play!* has developed into exterior sculptures of animal characters playing sport, with a joyful emphasis on movement, teamwork, and friendly competition.

To respond to the City's desire to include as many sports themes and as many animals as possible, *Let's Play!* is envisioned as a cohesive series that incorporate several of the principal sports played at the facility, including soccer, lacrosse and cricket. These sports moments can be expressed through a diverse cast of local animal characters, such as foxes, squirrels and beavers.

Each sculpture would be captured in jovial and inviting gestures, such as a cheering lacrosse fan, a dancing cricket player, a practicing soccer player, or a breakout goal. With the Cowan Recreation Centre being such a diverse and family friendly destination, I also wanted to design a public artwork that families can genuinely delight in. Imagine a child posing beside a character mid-action, or a family resting together within the installation before heading inside for a program.

Materially, the sculptures are envisioned as long lasting, minimum maintenance works fabricated in bronze, with a patina selected to harmonize with the building's natural hues and featured roof tones. The intent is to create a durable, welcoming, and visually striking series that will age beautifully through all seasons, while remaining safe and engaging for high traffic public interaction.

Public Art Goals and Vision

In reading the project background and program objectives, I was particularly compelled by the emphasis on imaginative, engaging, visually striking, interactive public art, and by the broader mandate to prioritize quality, sustainability, inclusivity, accessibility, place keeping, and community interactivity. These values align directly with the driving force of *Let's Play!* which is to create moments of delight that feel integrated into daily life at the facility.

The Cowan Recreation Centre is designed as a major hub for sport, recreation, and community connection, with an extraordinary range of amenities and a projected high volume of visitors. This level of use calls for public artworks that is immediately readable, joyful, and durable, while also being carefully engineered for safety, accessibility, and low maintenance. *Let's Play!* was created to complement the facility's architectural style, including its flowing canopies and curved lines, through sculptural forms that are lively, friendly, and human scaled, while offering bold visual impact.

Because the two public art locations are both exterior, ground mounted, and situated on concrete hardscape in high traffic areas, the sculptures are envisioned to be robust, non-corrosive, and designed for easy cleaning and minimal maintenance. All forms would be developed and refined to avoid sharp edges, protruding hazards, trip points, pinch points, and detachable elements. Surfaces would be shaped to reduce snow and leaf build up, and to withstand Kitchener's seasonal operations, including adjacent snow removal equipment moving near the works.

***Let's Play!* – Impact in relation to adjacent and regional communities and facility users**

With the Cowan Recreation Centre expecting a wide range of users, from local families and youth to athletes attending regional and national tournaments, the artwork must work at multiple speeds. Visitors will notice the sculptures from a distance on approach, and then enjoy them up close through texture, gesture, photo moments, and physical proximity. The goal is for the artwork to become part of the rhythm of arriving, meeting, waiting, and celebrating, creating a sense of place and shared memory.

Let's Play! is intended to function as a friendly landmarking system for the site, offering clear meeting points and a sense of identity, in a way that feels natural and playful. Over time, the sculptures can become part of how people describe the place, such as "meet you by the squirrel". This kind of casual, everyday relationship is one of the strongest measures of public art success, especially at a civic facility built for belonging, movement, and intergenerational connection.

Importantly, *Let's Play!* also aims to support the City's equity affirming intent by presenting sport and play as inclusive, welcoming, and shared. The characters are designed to feel joyful and approachable to people of many backgrounds, ages, and abilities, while ensuring that the work does not obstruct movement or compromise accessibility standards.

1 – Artwork Title

Let's Play! – featuring (5x) local animals playing local sports (with standard-sized equipment).

2 – Artist Information

Pierre Poussin – Artist

2308-5791 Yonge Street, North York, ON, M2M 0A8

pierrepoussin@gmail.com

www.pierrepoussin.com

t: (416) - 880 - 6427

3 – Fabrication Team

Mike Bilyk – Fabricator and Installer

Lafontaine Iron Werks Inc.

101 Lafontaine Road West, Tiny, ON, L9M 0L5

mike@lafontaineironwerks.com

t: (705) - 734 - 4567

Jonathan Killing – Detailing and Engineering

Toque Innovations

2-806 Victoria St, Midland, ON, L4R 1B6

jonathan@toqueinnovations.com

t: (705) - 526 - 0709

4 – Fabrication Notes

Let's Play! will be constructed using a combination of 5/16" (7.9mm) and 1/2" (12.7mm) thick cast-bronze shells, which will be cast in sections, welded, ground and meticulously finished with patina and wax coatings. Key details include:

Materials: 5/16" (8mm) thick and 1/2" (12.7mm) thick bronze shells.

Structure: Each sculpture will be supported by an internal steel structure and securely anchored to the foundation using cast-in anchors.

Finishing Process: Patina and Wax Coatings

This robust fabrication method and material choice ensures structural integrity and long-lasting durability.

5 – Preliminary Maximum Dimensions of Artworks

Maximum Height of Sculptures	1.53 m H	5 - 0" H
Maximum Depth	0.85 m L	2' - 9 1/2" L
Maximum Width	1.35 m W	4' - 8" W
Primary Material	7.9mm thick, Cast-Bronze	
Total Sculptures	5 x Units*	



7 – Safety, Security and Maintenance

Let's Play! is designed for durability and requires minimal upkeep due to its fabrication methods and material choices. Key maintenance and safety considerations include:

Low Maintenance: Annual inspection and cleaning with warm water and mild soap are sufficient to maintain the sculptures' surfaces and finishes and will help prolong the artworks and their finishes. Re-waxing each piece every 6 months will be needed to ensure maximum longevity of artworks. A detailed maintenance manual will be provided, giving details to the frequency and specific wax type.

On-Site Repairs: Light surface damage to paint or finish can be repaired on-site.

Winter Protection: Snow will be cleared by hand within a 2-meter radius of the sculptures to prevent damage from mechanical snow clearing.

Vibration Resistance: Artworks are engineered to withstand vibrations from nearby trains.

Interaction Safety: Sculptures are a maximum of 1535mm tall, posing a low risk of climbing.

Anti-Graffiti: Sculptures will be finished with an additional wax-coating, acting as a sacrificial layer for any possible graffiti.

Maintenance Manual: Detailed manuals will be provided to guide maintenance teams.

8 – Preliminary Project Timeline

Official Commencement with Contract	April 2026
Detailed Designs of Sculpture for Client Approval	May 2026
Stamped Engineering Drawings	June 2026
Fabrication	July 2026
Delivery of Sculptures	September 2026*

9 – Updated Project Budget (x5) Individual Exterior Sculptures

Fabricator's Fixed Costs (Stamped-Engineered Drawings of Artworks)	\$ 9,950.00
Materials, Fabrication, Patina & Wax (Sand-Cast Bronze Shells, with Cast-In Anchors)	\$ 176,550.00
Crating, Transportation and Installation	\$ 11,500.00
Insurance	\$ 2,000.00
Artist Fee	\$ 25,000.00
Project Contingency (10%)	\$ 25,000.00
TOTAL	\$ 250,000.00*

* Above Prices excludes HST

* Please note that the above budget reflects the client request of five (x5) individual exterior sculptures for the KCRC's West and North Entrances.

* In order to satisfy the sensitive project timeline and artwork installation, the fabricator and engineer request a 50% deposit for the project rush.

* Above Artwork Delivery will be coordinated with Project Team to minimize storage.

* Please note that all dates can change based on the overall Project Schedule when it becomes available, and fabrication deposit received.

* All designs, details and overall dimensions are subject to change based on the fabricator and engineers' input and final costs.

* Material Purchasing, Fabrication, Delivery and Installation will be done by Latontaine Iron Werks, based in Tiny, ON.

* Foundation Designs by Artist and Artist Engineering Team. Foundation by others.

* Please note that Tariffs are not included in any of the pricing. Prices may have to be re-adjusted if any Tariffs, or raw material price fluctuations, take effect before the project's raw materials can be purchased.

LAFONTAINE

IRONWERKS INC



Pierre Poussin

April 15, 2026

Re: Kitchener characters estimate

Dear Pierre;

Thank you for the opportunity to quote your requirements for this project. At this time, we are only able to provide a high-level estimate due to timing.

- 5x cast bronze characters, 2 @ 5 feet, 2 @ 4 feet, 1 @ 2.5 feet
- Final patina TBD
- Shop drawings
- Peng reviewed and sealed drawings (Province of Ontario)
- Anchor rods protruding from bottom
- Foundations by others
- Transport to site
- Installation on provided foundation epoxied into place.

Shop drawings, 3D files for fabrication, & engineers review	\$9,950.00
Molds, casting and patina	\$176,550.00
Transportation and installation	\$11,500.00
Total	\$198,000.00 +HST

Notes;

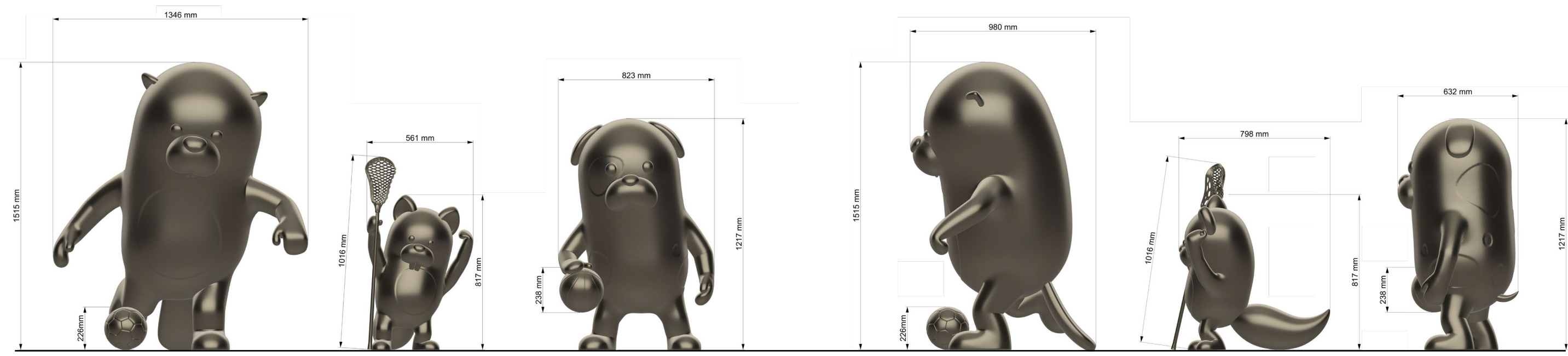
- All taxes extra.
- Deposits and progressive draws require (please discuss this with me before you sign contract).
- This is only a high-level estimate at this time as we need time to do appropriate due diligence.
- Assume 4 to 6 months production time from date of approved drawings and appropriate deposits

Sincerely,

Michael Bilyk

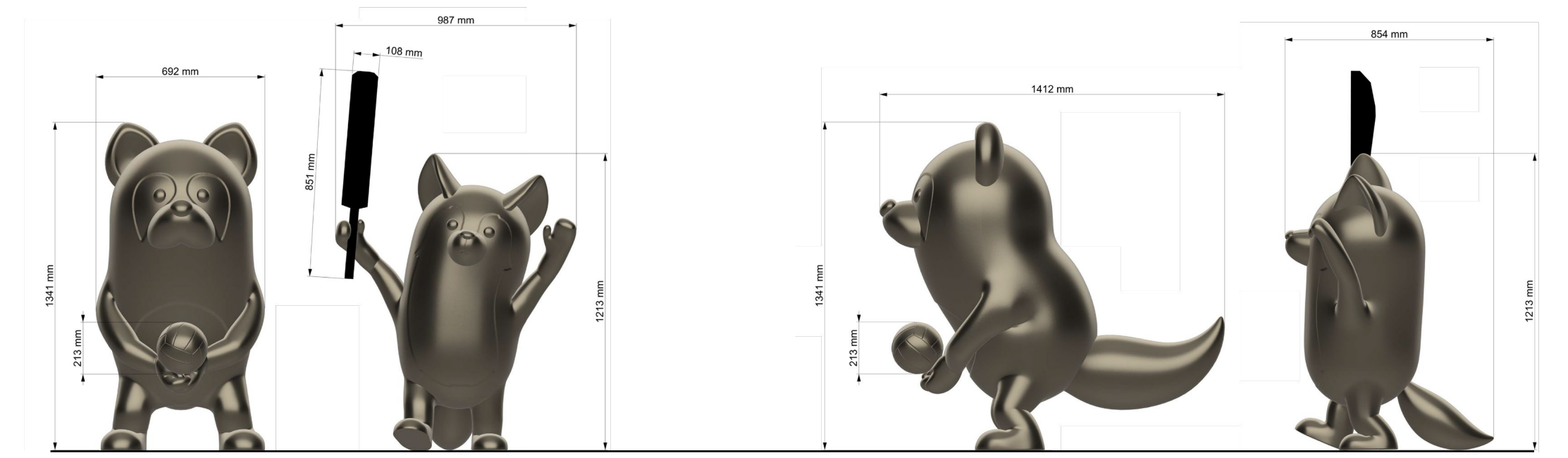
Michael P. Bilyk





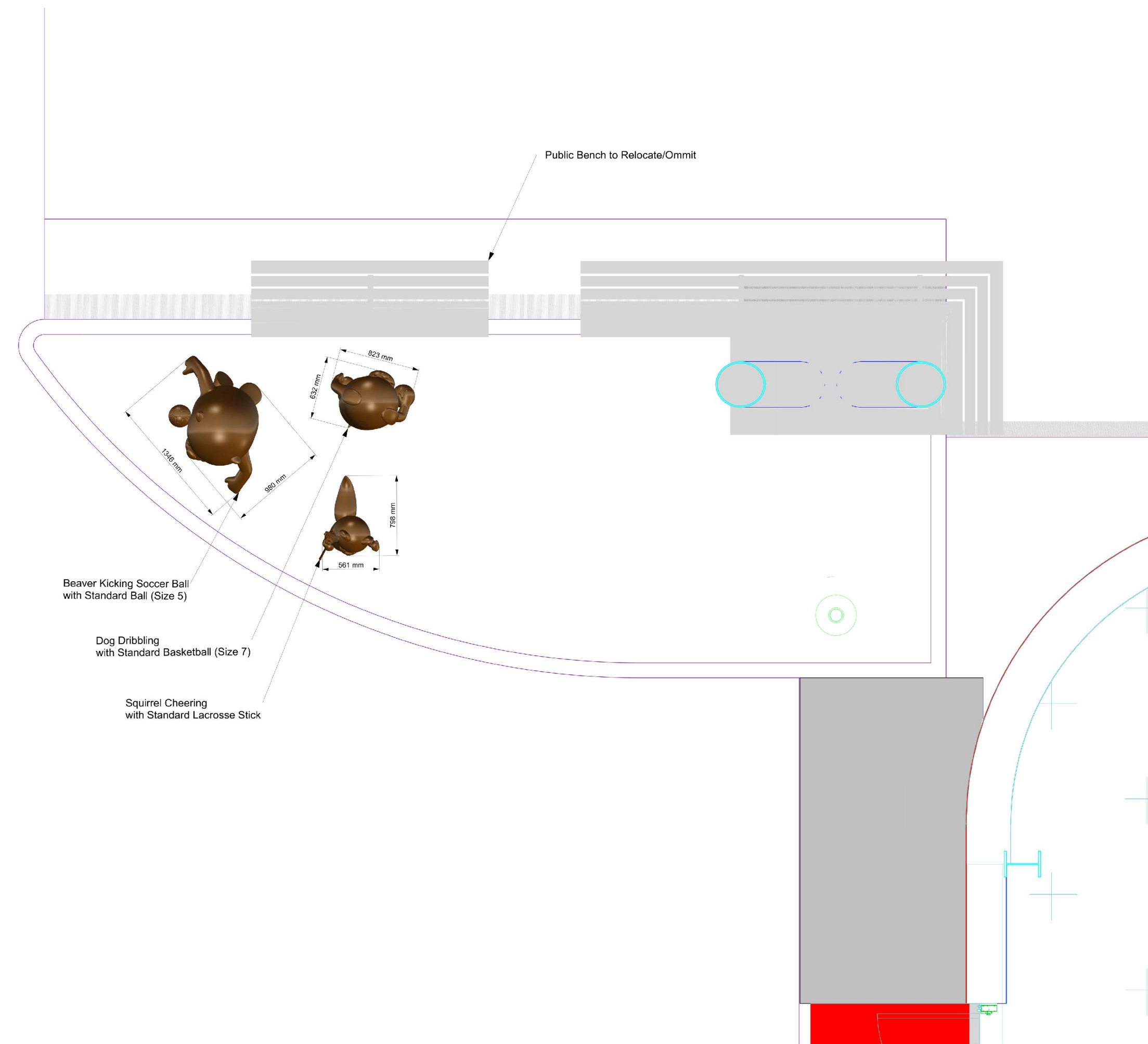
LET'S PLAY! (v.2.1) PRELIMINARY ARTWORKS - FRONT ELEVATIONS - WEST ENTRANCE
N.T.S.

LET'S PLAY! (v.2.1) PRELIMINARY ARTWORKS - SIDE ELEVATIONS - WEST ENTRANCE
N.T.S.

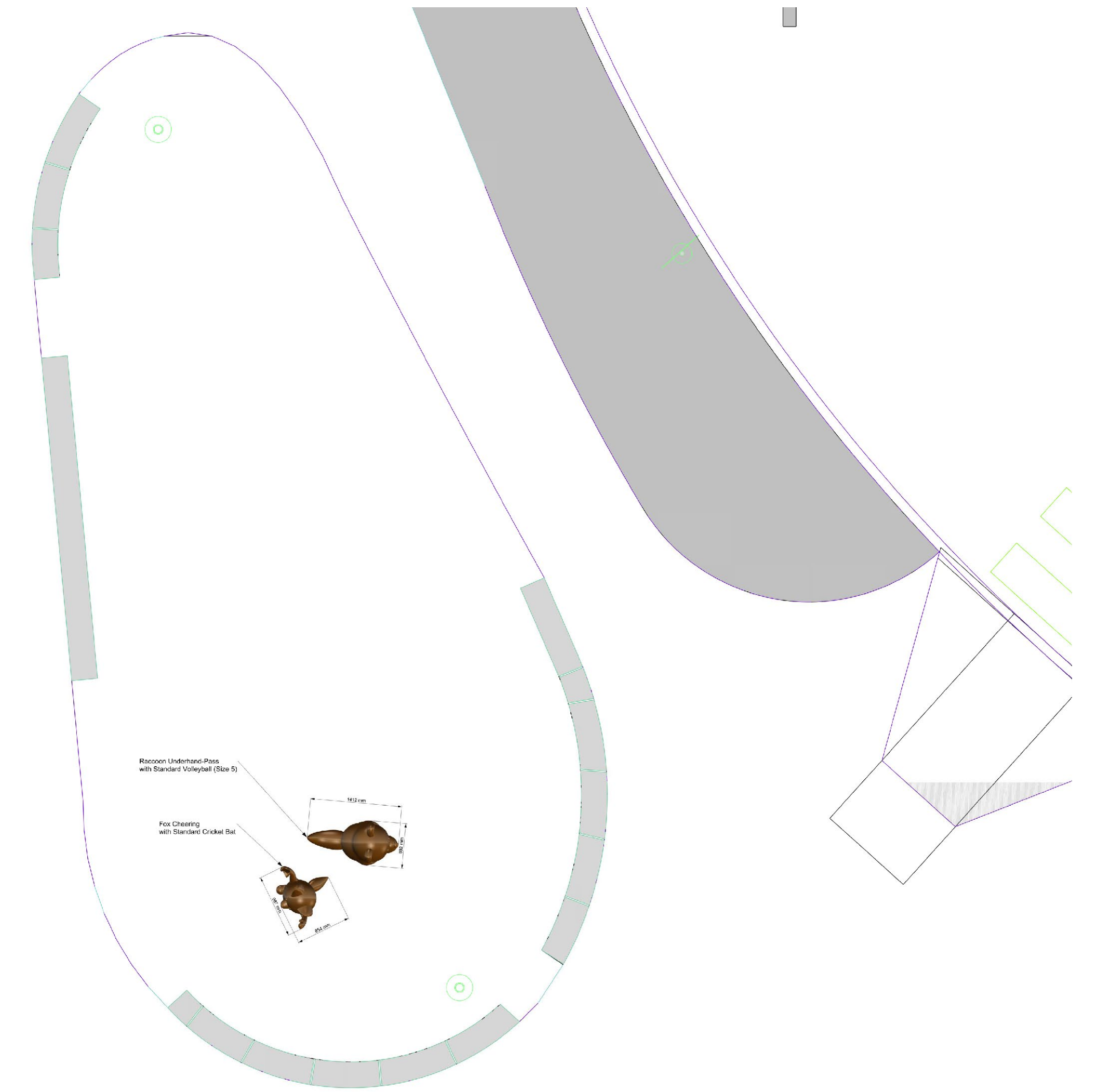


LET'S PLAY! (v.2.1) PRELIMINARY ARTWORKS
FRONT ELEVATIONS - NORTH ENTRANCE - N.T.S.

LET'S PLAY! (v.2.1) PRELIMINARY ARTWORKS
SIDE ELEVATIONS - NORTH ENTRANCE - N.T.S.



LET'S PLAY! (v.2.1) - PRELIMINARY ARTWORK LOCATIONS - PLAN VIEW - WEST ENTRANCE
N.T.S.



LET'S PLAY! (v.2.1) - PRELIMINARY ARTWORK LOCATIONS - PLAN VIEW - NORTH ENTRANCE
N.T.S.



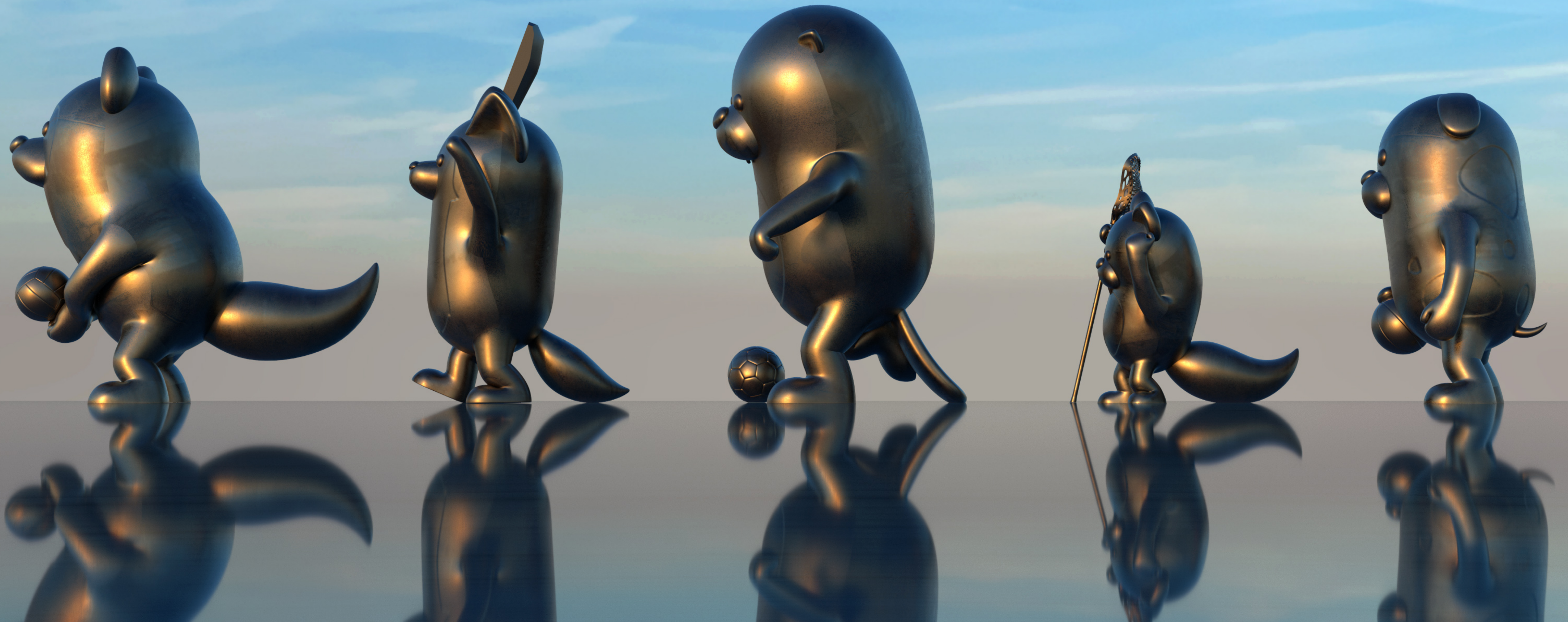


LET'S PLAY! (v.2.1) EXTERIOR PUBLIC ARTWORKS
FOR THE CITY OF KITCHENER AND THE COWAN RECREATION CENTRE
PUBLIC ARTWORKS FOR THE WEST & NORTH ENTRANCES
KITCHENER, ONTARIO, CANADA
APRIL 17, 2026









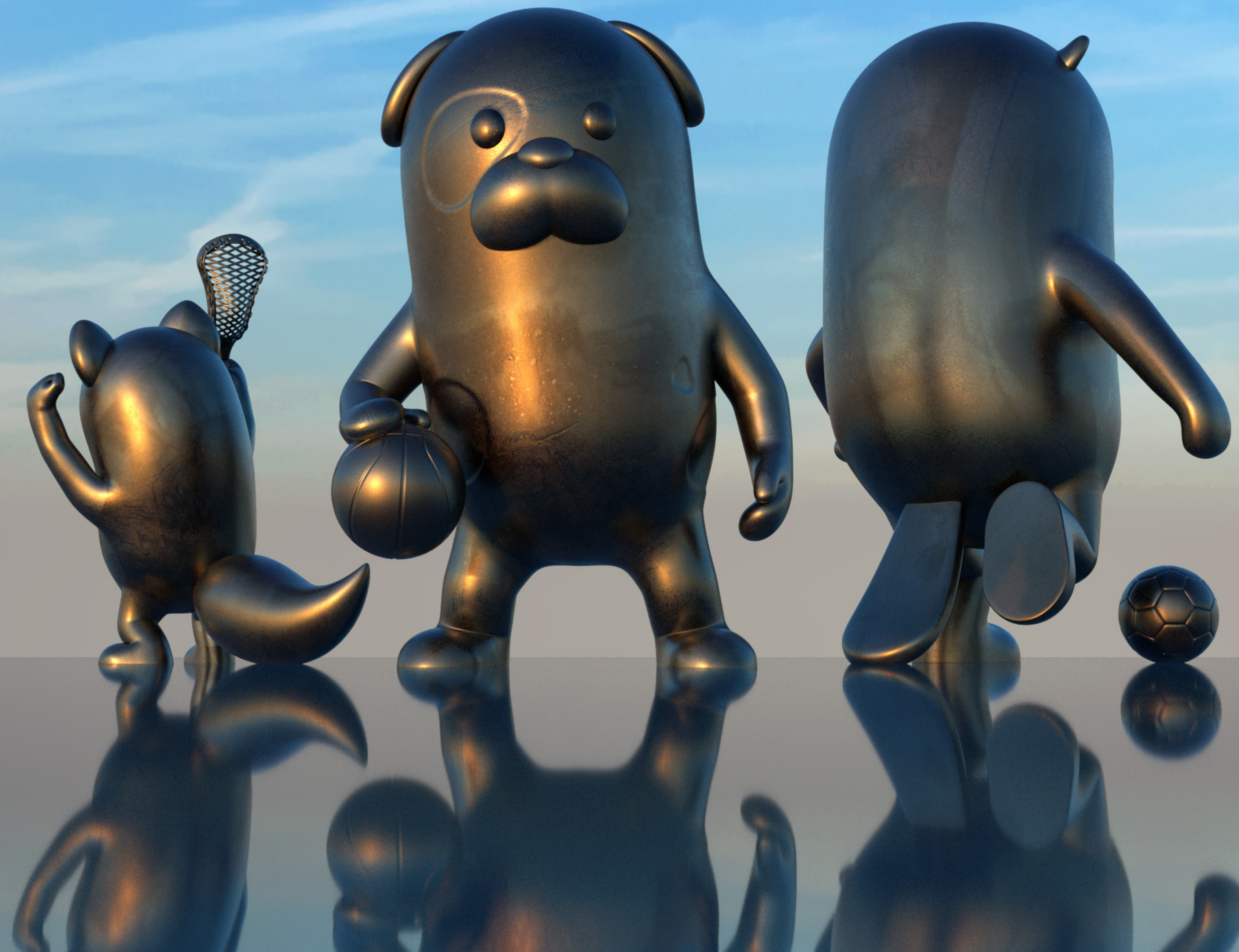


LET'S PLAY! (v.2.1) EXTERIOR PUBLIC ARTWORKS
FOR THE CITY OF KITCHENER AND THE COWAN RECREATION CENTRE
PUBLIC ARTWORKS FOR THE WEST ENTRANCE
KITCHENER, ONTARIO, CANADA
APRIL 17, 2026

Let's Play! version 2.1 Preliminary Concept by Pierre Poussin
For the City of Kitchener and The Cowan Recreation Centre
Cast-Bronze, Patina, Wax, 3 x 1.5m - 1m H x 1.2m W
Perspective View of West Entrance Artworks
Kitchener, ON, April 17, 2026.











LET'S PLAY! (v.2.1) EXTERIOR PUBLIC ARTWORKS
FOR THE CITY OF KITCHENER AND THE COWAN RECREATION CENTRE
PUBLIC ARTWORKS FOR THE NORTH ENTRANCE
KITCHENER, ONTARIO, CANADA
APRIL 17, 2026

Let's Play! version 2.1 Preliminary Concept by Pierre Poussin
For the City of Kitchener and The Cowan Recreation Centre
Cast-Bronze, Patina, Wax, 2 x 1.5m - 1.3m H x 1.2m W
Perspective View of North Entrance Artworks
Kitchener, ON, April 17, 2026.



Let's Play! version 2.1 Preliminary Concept by Pierre Poussin
For the City of Kitchener and The Cowan Recreation Centre
Cast-Bronze, Patina, Wax, 2 x 1.5m - 1.3m H x 1.2m W
Perspective View of North Entrance Artworks
Kitchener, ON, April 17, 2026.

