

SITE STATISTICS

Zoning- R-3" AND R-3", 10T, 432R
Lot Area- 9187.9m²

Unit Area - 6710.7m²
Building Area - 3109.4m² (33.8%)
Landscaped Area - 3601.3m² (39.2%)
Road Area - 1439.3m² (15.7%)
Sidewalk Area - 239.8m² (2.6%)
Common Element Area - 798.1m² (8.7%)
Parking Required - 14 spaces
(1 space per unit)
Parking Provided - 14 spaces

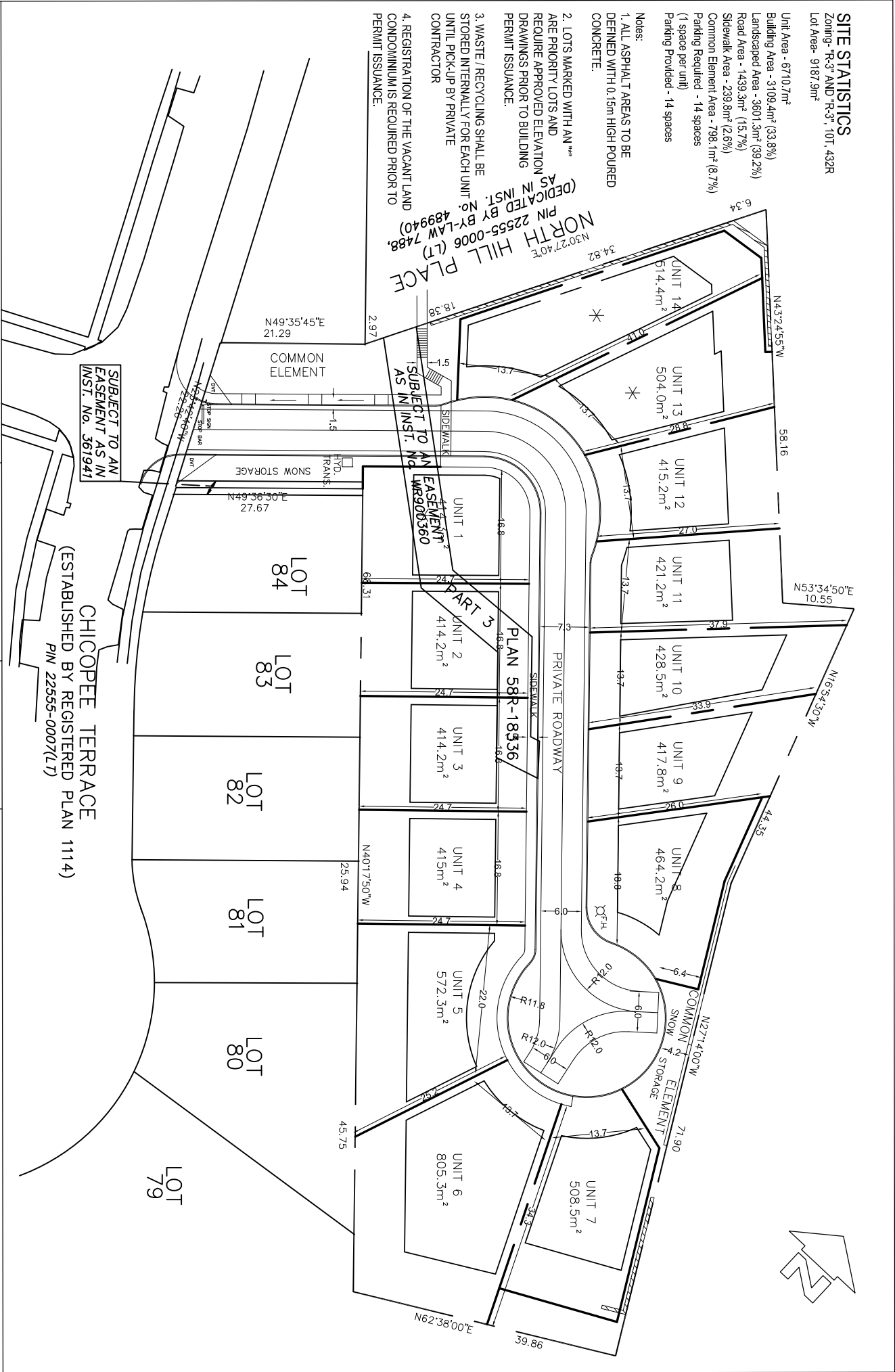
Notes:
1. ALL ASPHALT AREAS TO BE
DEFINED WITH 0.15m HIGH POURED
CONCRETE.

2. LOTS MARKED WITH AN ***
ARE PRIORITY LOTS AND
REQUIRE APPROVED ELEVATION
DRAWINGS PRIOR TO BUILDING
PERMIT ISSUANCE.

3. WASTE / RECYCLING SHALL BE
STORED INTERNALLY FOR EACH UNIT
UNTIL PICK-UP BY PRIVATE
CONTRACTOR

4. REGISTRATION OF THE VACANT LAND
CONDOMINIUM IS REQUIRED PRIOR TO
PERMIT ISSUANCE.

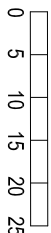
(DEDICATED BY BY-LAW 7488,
PIN 22555-0006 (LT)
NORTH HILL PLACE
AS IN INST. No. 489940)



SITE PLAN

ELEV8 PROPERTIES INC.

99, 107 AND 109 NORTH HILL PLACE & 29 CHICOPEE TERRACE



SCALE 1: 750

REVISED:

SITE PLAN APPLICATION : SP20/051/N/ES

PART OF LOT 54, GERMAN COMPANY TRACT AND LOT 86 REGISTERED PLAN 1114

City of Kitchener

DEVELOPMENT SERVICES DEPARTMENT

CAD FILE:
SP20051NES.dwg