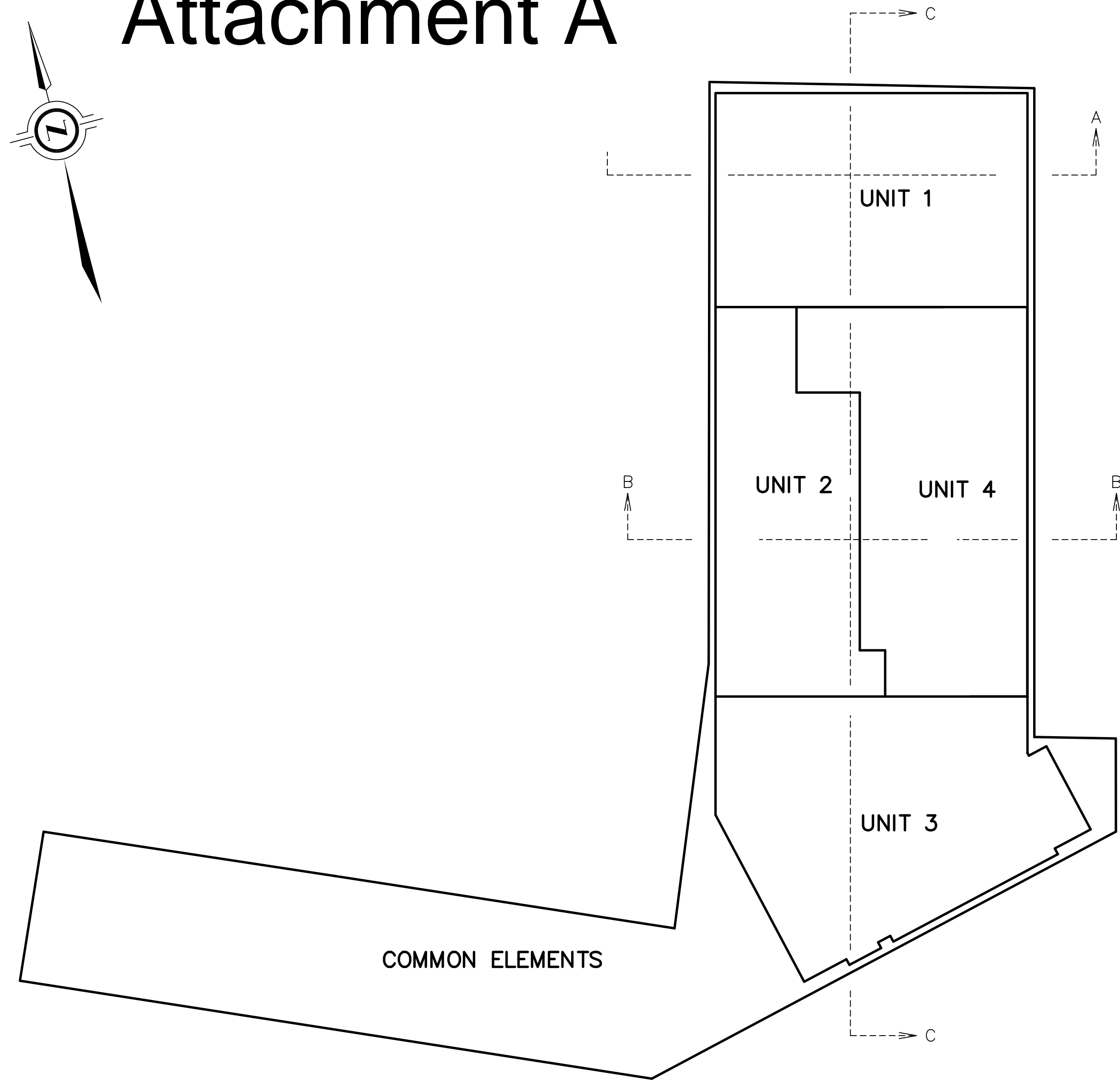
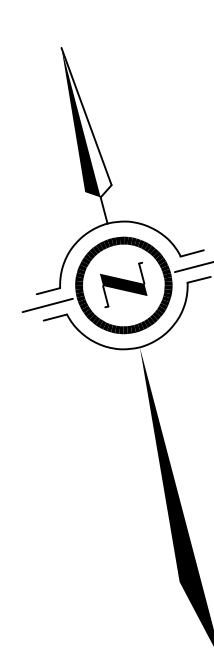
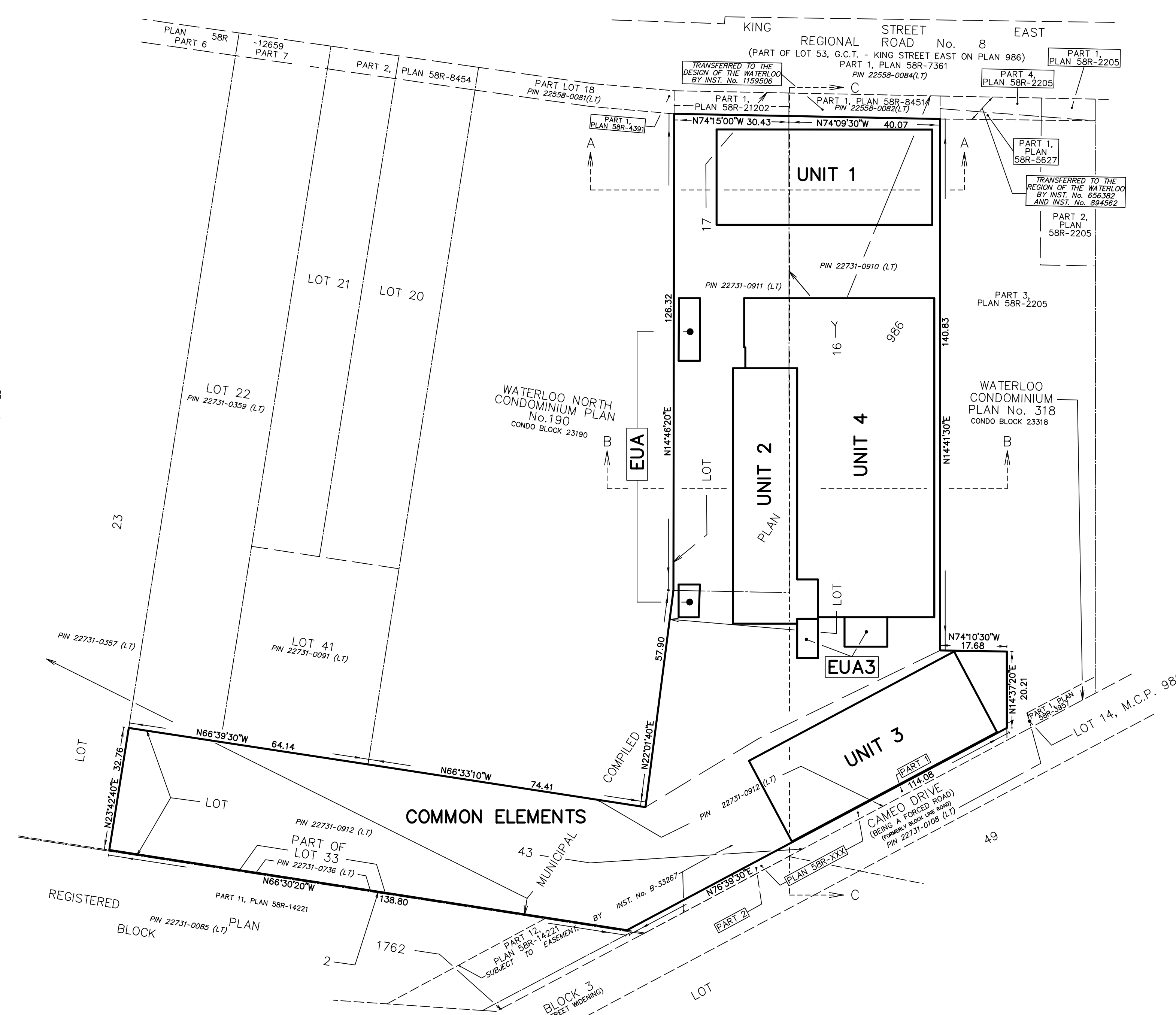


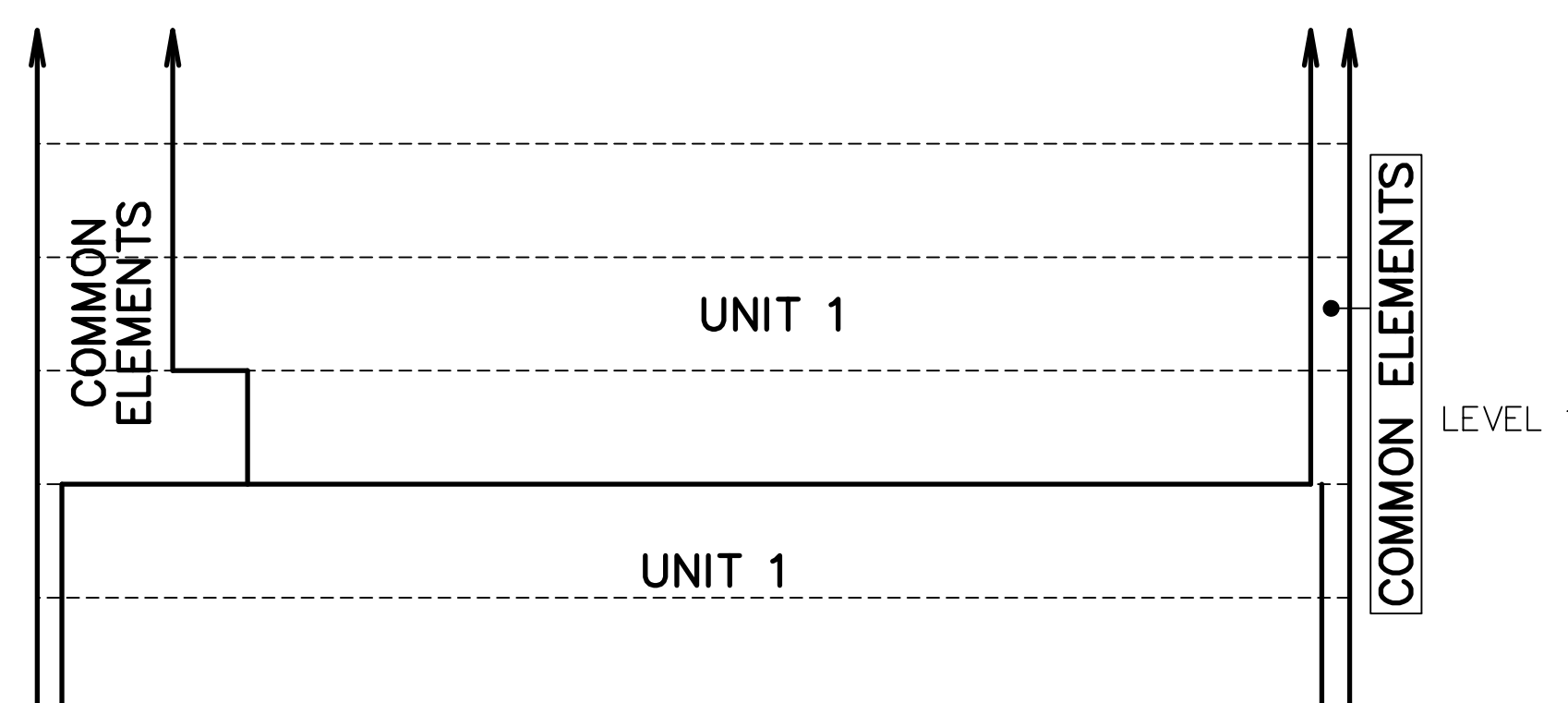
Attachment A



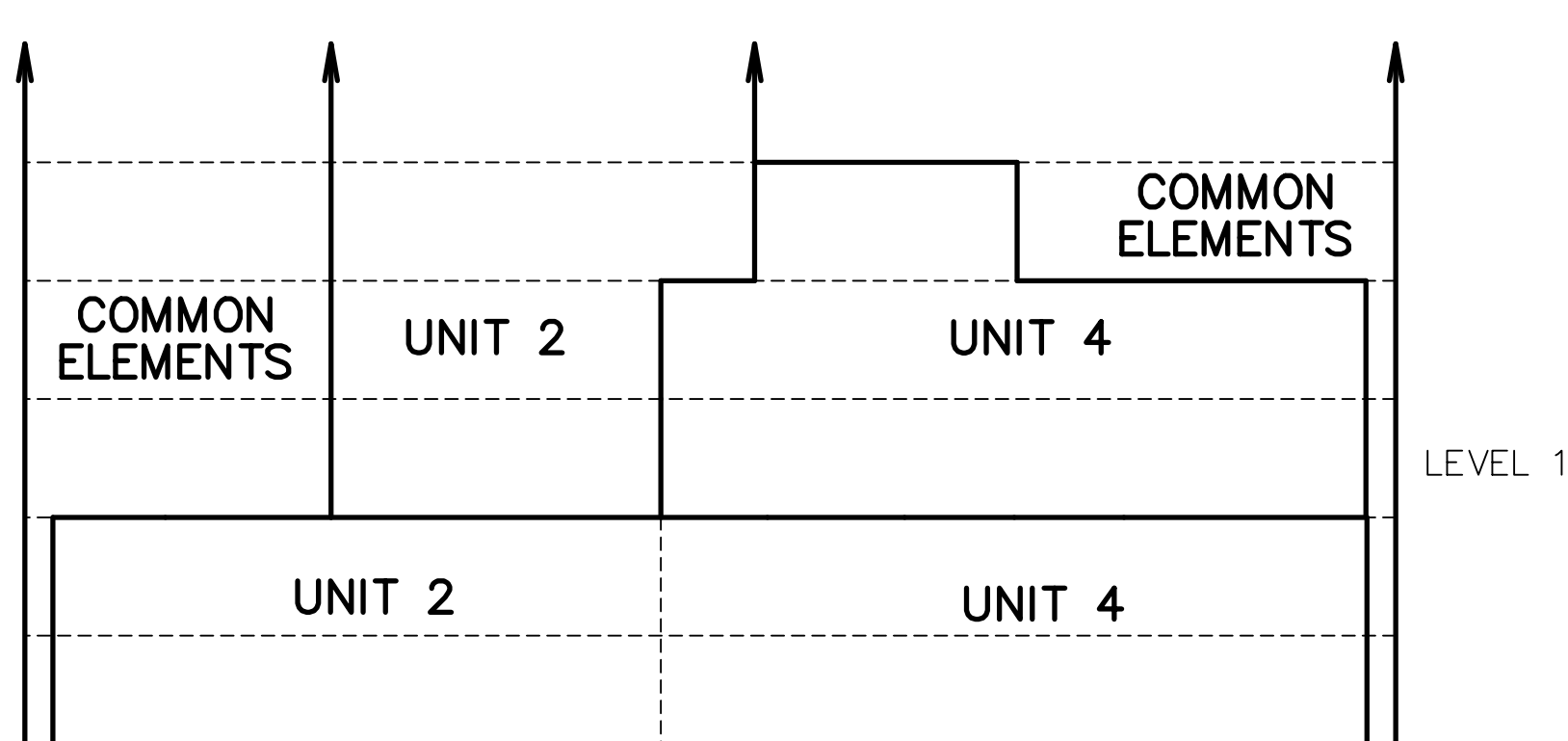
PLAN VIEW ILLUSTRATING UNITS 1 TO 4, INCLUSIVE, ON PARKING LEVELS 1 AND 2



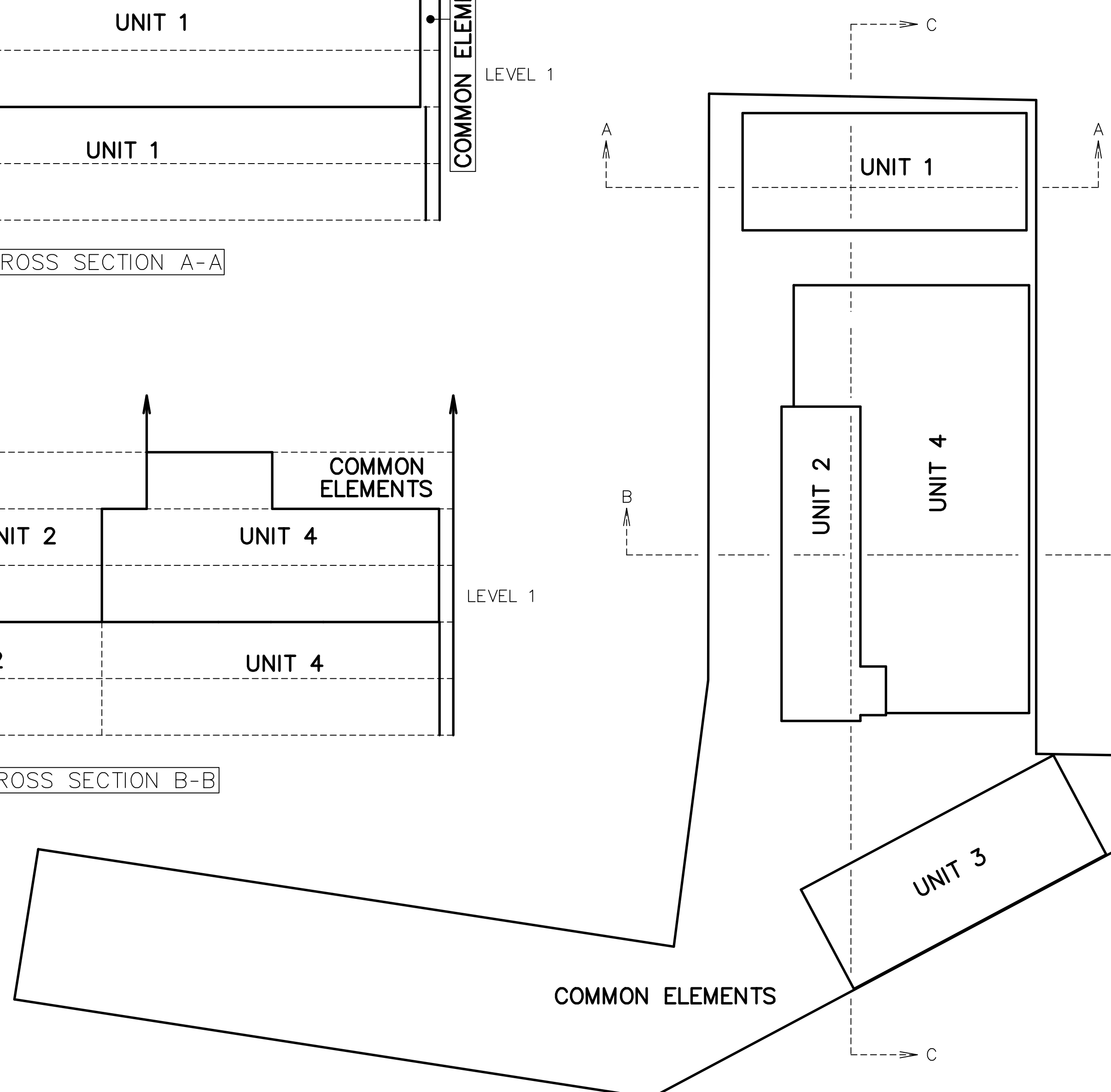
PLAN VIEW ILLUSTRATING UNITS 1 TO 4, INCLUSIVE, AND THE EXCLUSIVE USE AREAS ON THE GROUND FLOOR, LEVEL ONE



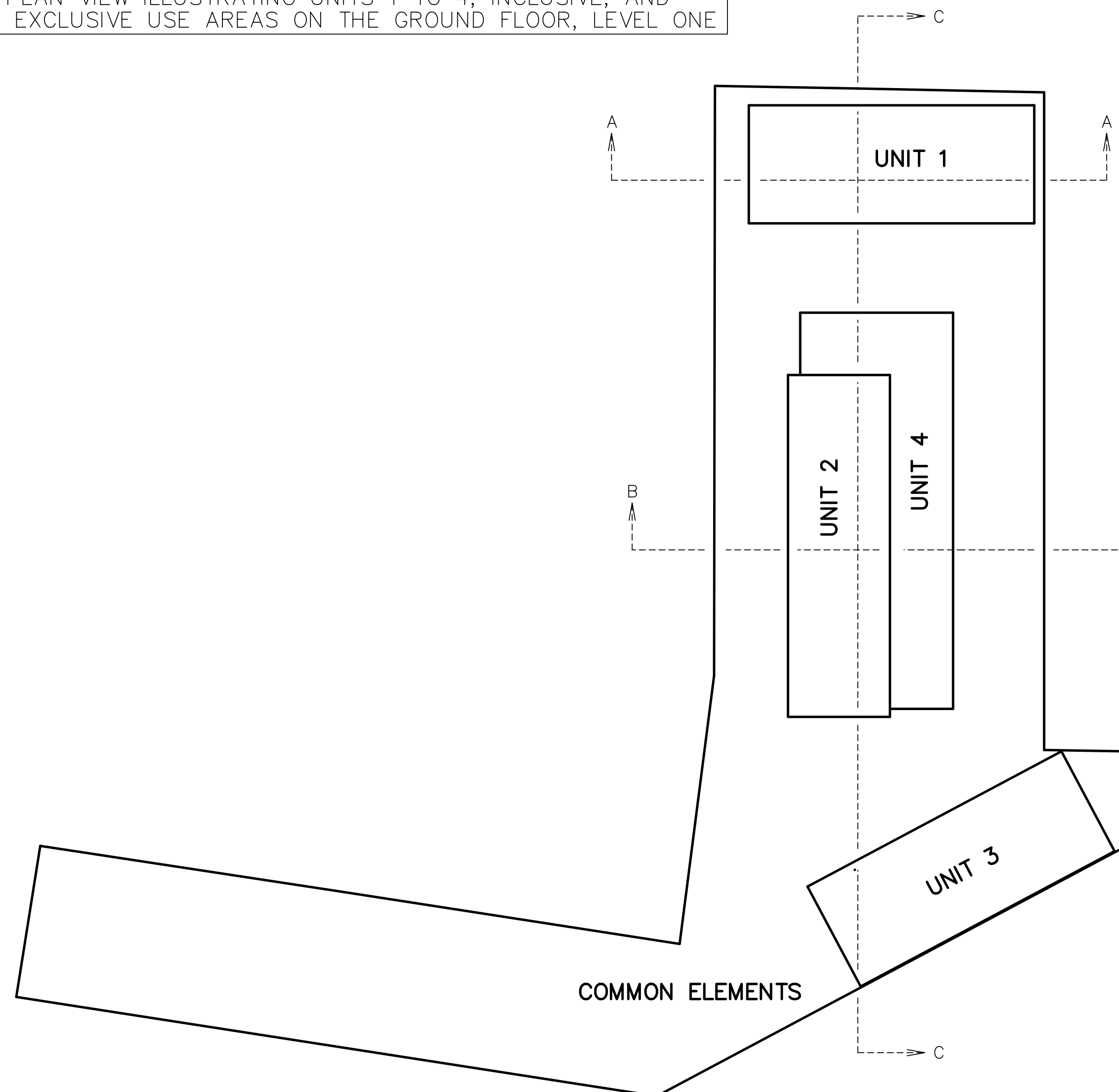
CROSS SECTION A-A



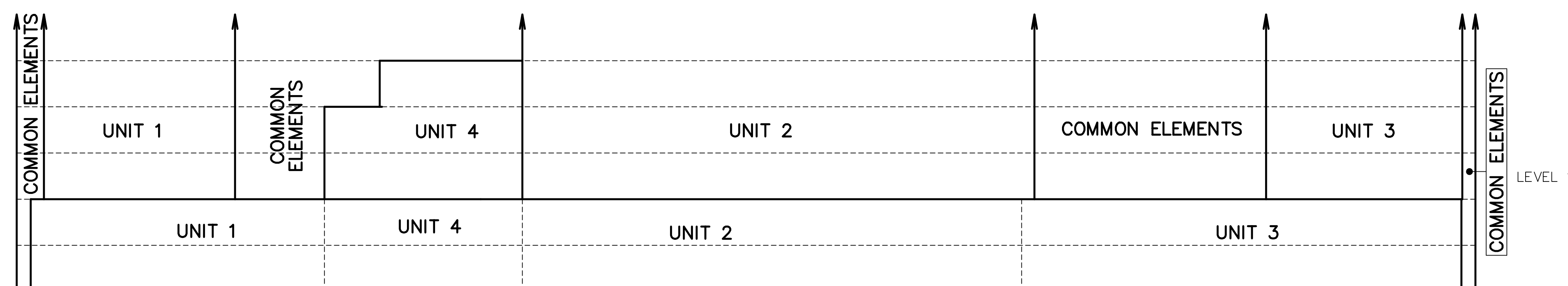
CROSS SECTION B-B



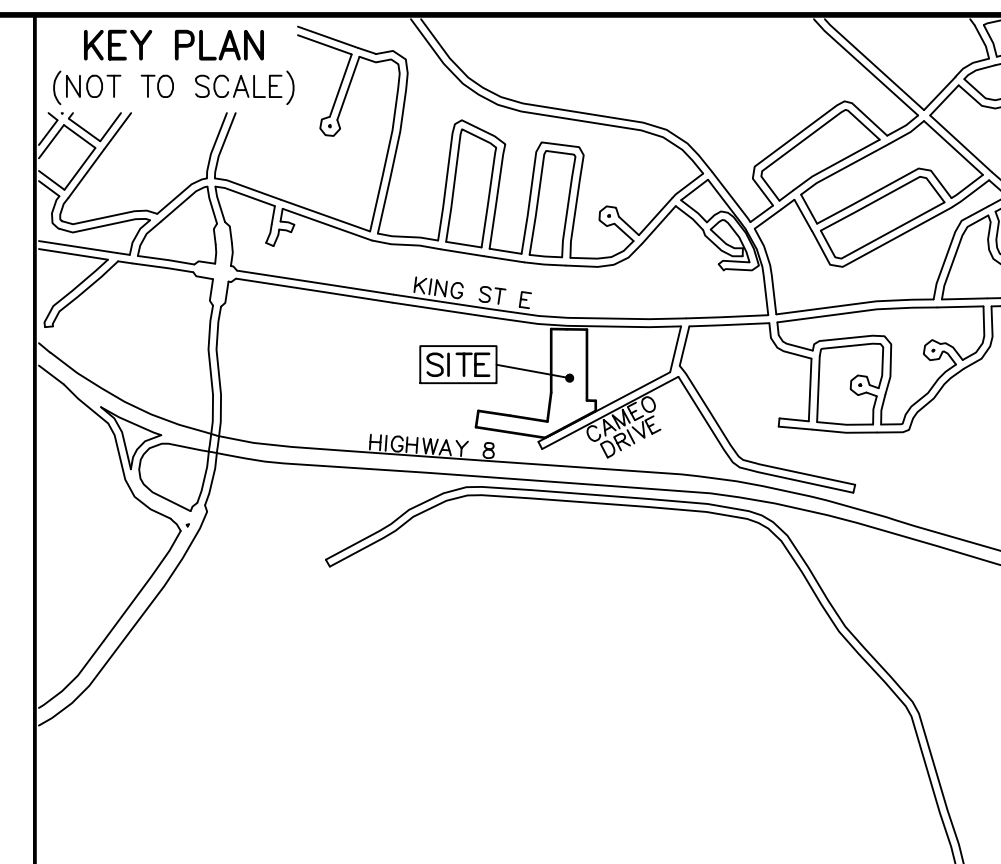
PLAN VIEW ILLUSTRATING UNITS 1 TO 4, INCLUSIVE, ON THE SECOND FLOOR, LEVEL ONE



PLAN VIEW ILLUSTRATING UNITS 1 TO 4, INCLUSIVE, ON THE THIRD FLOOR, LEVEL ONE



CROSS SECTION C-C



DRAFT PLAN OF VACANT LAND CONDOMINIUM OF
PART OF LOTS 16, 17 AND 43
MUNICIPAL COMPILED PLAN 986
CITY OF KITCHENER
REGIONAL MUNICIPALITY OF WATERLOO
SCALE 1 : 750

J.D. BARNES LIMITED
DISTANCES AND/OR COORDINATES SHOWN ON THIS PLAN ARE IN
METRIC METRES AND CAN BE CONVERTED TO FEET BY DIVIDING BY 0.3048.

NOTES
BEARINGS ARE UTM GRID, DERIVED FROM OBSERVED REFERENCE POINTS A AND B,
BY REAL TIME NETWORK (RTN) OBSERVATIONS, UTM ZONE 17, NAD83 (CSRS)
(2010.0).
DISTANCES ARE GROUND AND CAN BE CONVERTED TO GRID BY MULTIPLYING BY
THE COMBINED SCALE FACTOR OF 0.999970.

LEGEND
EUA DENOTES EXCLUSIVE USE AREA

ADDITIONAL INFORMATION REQUIRED UNDER SECTION 51(17) OF THE PLANNING ACT

- FOR A, B, C, E, F, G AND J SEE DRAFT PLAN AND KEY PLAN
(D) THIS IS A PROPOSED RESIDENTIAL DEVELOPMENT OF 3247 KING STREET EAST
(H) MUNICIPAL WATER IS AVAILABLE ON ADJACENT STREETS
(I) CLAY/CLAY LOAM/SILT/TOP SOIL
(K) MUNICIPAL STORM AND SANITARY SEWERS ARE AVAILABLE ON ADJACENT STREETS
(L) ALL EASEMENTS AFFECTING THE SUBJECT SITE ARE SHOWN ON THE FACE OF THIS PLAN.

OWNER'S CERTIFICATE

I HEREBY CONSENT TO THE SUBMISSION OF THIS PLAN FOR APPROVAL
3247 KING STREET EAST (KITCHENER) LIMITED
AND DAY NOMINEE CORPORATION

10/14/2022
DATE
STEPHEN LUTT
AUTHORIZED SIGNING OFFICER
I HAVE THE AUTHORITY TO BIND THE CORPORATION

SURVEYOR'S CERTIFICATE

I HEREBY CERTIFY THAT THE BOUNDARIES OF THE LAND TO BE DEVELOPED
AS SHOWN ON THIS PLAN, AND THEIR RELATIONSHIP TO THE ADJACENT
LANDS, ARE ACCURATELY AND CORRECTLY SHOWN.

OCTOBER 12, 2022
DATE
ROD LORD
ONTARIO LAND SURVEYOR

J.D. BARNES LIMITED
SURVEYING
MAPPING
GIS
LAND INFORMATION SPECIALISTS
471 KING ST. E. #100, KITCHENER, ON, N2P 2E9
T: (519) 575-2200 F: (519) 575-6025 www.jdbarnes.com

DRAWN BY: TAB CHECKED BY: RL REFERENCE NO: 21-40-460-02
PLOTTED: 10/14/2022 DATES: OCTOBER 14, 2022